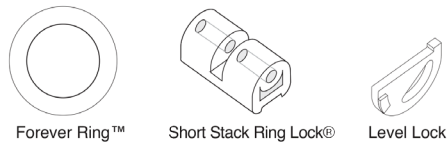
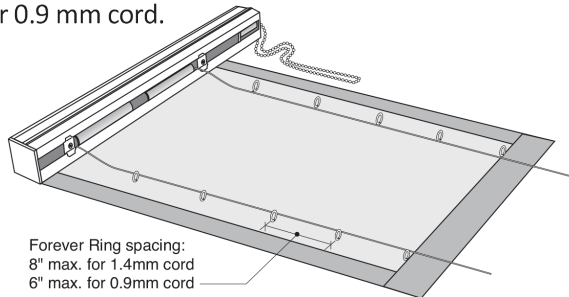


SAFETY RING LOCK INSTALLATION INSTRUCTIONS



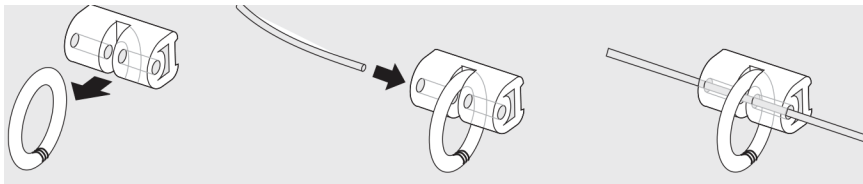
STEP 1: Attach Forever Rings

Attach Forever Rings™ to the inside of the shade fabric as shown. Space the rings evenly in vertical columns with the number of columns determined by the weight of the shade. Ring spacing should not exceed 8 inches for 1.4 mm cord and 6 inches for 0.9 mm cord.



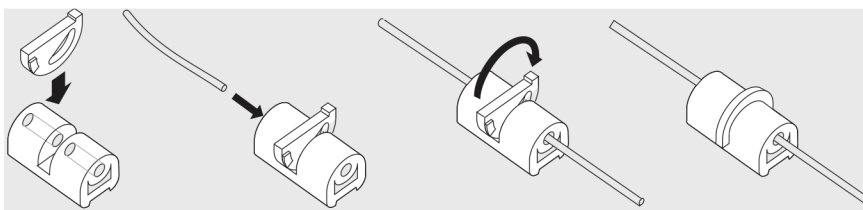
STEP 2: Attach Ring Locks® to Forever Rings™

Starting at the top of the shade, place a Short Stack Ring Lock® over a top Forever Ring™. Thread the cord through the holes in the Ring Lock and the Forever Ring. Repeat with each of the remaining rings in the column and the remaining columns.



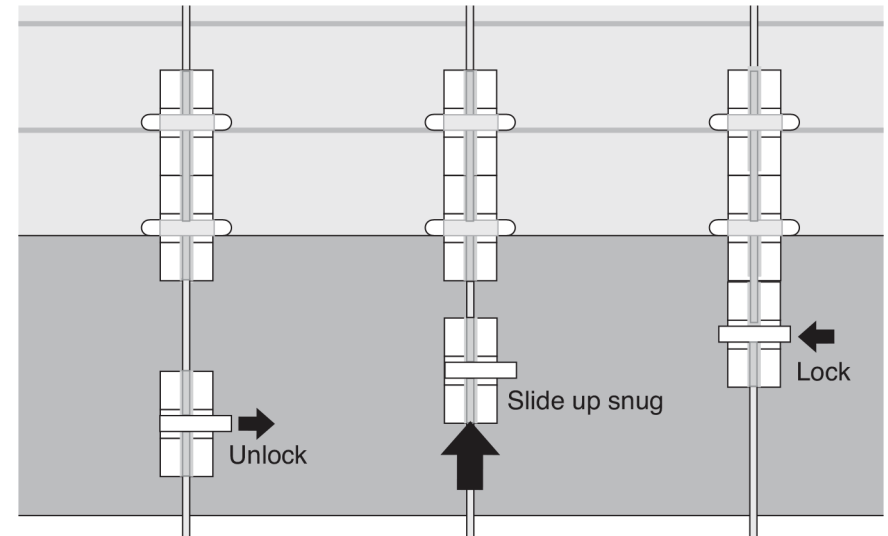
STEP 3: Attach a Level Lock® at Bottom of Columns

Insert the Level Lock, straight edge up, into the slot in the Ring Lock. Thread the free end of the cord through both Ring Lock and Level Lock. Rotate the Level Lock insert so the flat side is down, and slide to one side until you hear a CLICK. The Level Lock Set is now locked.



STEP 4: Level the Shade

With the shade mounted on the window, pull it up to its closed position, and hold the shade bottom level. Adjust each Level Lock by sliding its insert back, adjusting its height, and relocking.



STEP 5: Tie Knots at the Cord Ends

With the Level Locks holding the shade up in a level closed position, tie a stopper knot (Figure-8 knot shown) below each of the Level Lock Sets. Trim the excess cord.

