

SKYLINE BOTTOM UP

The Rollease Acmeda Bottom up is an innovative system, perfect for ground floor home or office applications where privacy and light harvesting are required. Bottom Up shades let the light in from the top of the window while shading the bottom section for privacy. Utilising Skyline hardware combined with an innovative cord adjusting system to ensure a self-levelling hem bar, it is an effortless upgrade to a traditional Skyline roller shade.

AESTHETICAL FEATURES

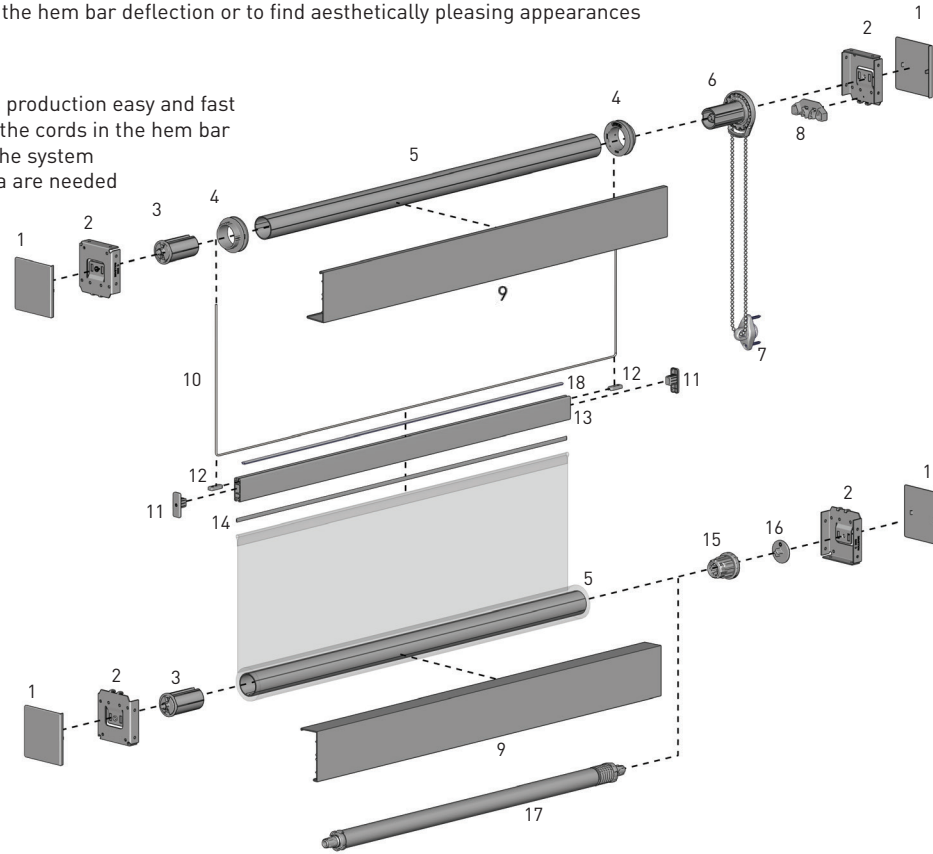
- Same slim square look as 3" Fascia
- The location of the cords can be adjusted to minimize the hem bar deflection or to find aesthetically pleasing appearances

PRODUCTION & ASSEMBLY FEATURES

- The design of the cord guides and the hem bar makes production easy and fast
- The cord guides make it easy to adjust the location of the cords in the hem bar
- The self-leveling hem bar ensures easy mounting of the system
- Only a few new parts for the standard 3" Skyline fascia are needed

FUNCTIONAL BENEFITS

- The geared clutch makes operating the shade effortless
- Easy to update from a clutch control to the motorized control
- Innovative cord adjusting system that ensures a self-levelling hem bar



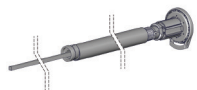
SYSTEM INDEX

1	3" SKYLINE SQUARE END CAP SLSECxx
2	3" SKYLINE FASCIA BRACKET SLFBKT3xx
3	SKYLINE HEAVY DUTY PIN END - 1.5" SLPEHD53xx
4	TUBE SPOOL - 1.5" CS4US
5	ALUMINUM TUBE TAPED - 1.5" RTEA4Txx
6	G200 GALAXY SKYLINE GEARED CLUTCH - 1.5" RGALHxx
7	CHAIN TENSIONING DEVICE Refer catalogue for options.
8	SKYLINE CHAIN DIVERTER SLCDxx
9	SKYLINE SQUARE FASCIA - 3" SLSFxx16
10	BRAIDED CORD 1.4MM V2LC14100
11	BOTTOM UP RAIL END CAP RB91-2139-xxx000
12	BOTTOM UP CORD GUIDE KIT RB91-2239-050001
13	BOTTOM UP RAIL RB91-1239-xxx490
14	FLAT SPLINE - 9.0MM RB92-0903-001075
15	CHAINFREE CONTROL - 1.5" RB12-3200-069038
16	ESU SKYLINE ADAPTER KIT RB91-2439-xxx001
17	BOOSTER UNIVERSAL - 1.5" - NO STOP RB12-3821-069138 - LIGHT
18	BOTTOM UP RAIL SEAL SB91-0007-001100

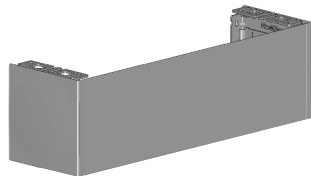
xxx = COLOUR, LLL = LENGTH

SYSTEM OPTIONS

G200 SKYLINE SPRING ASSIST



4 INCH FASCIA



CONTROL OPTIONS

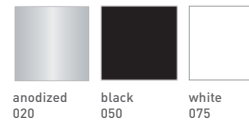
CHAIN CONTROL



MOTORIZED

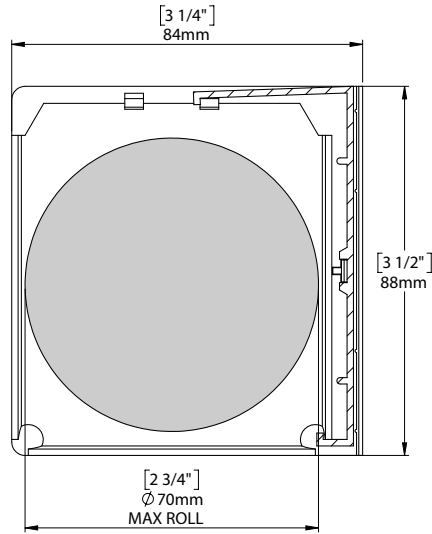


COLOUR RANGE

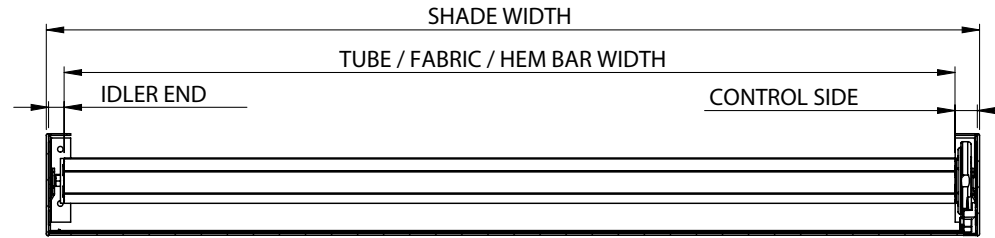


SPECIFICATIONS

MAX ROLL



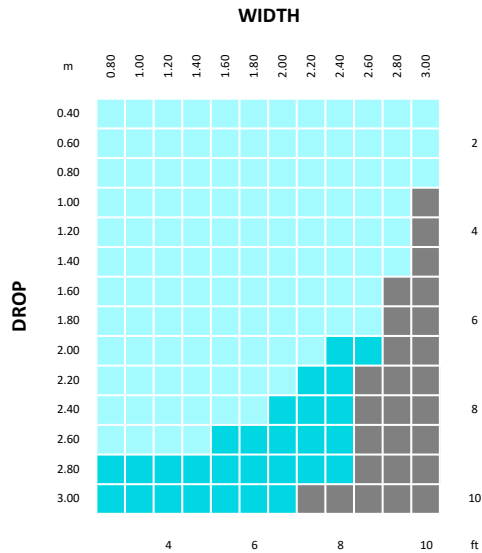
DEDUCTION



BRACKETS	PIN END	CONTROL SIDE	TOTAL DEDUCTION
With Bracket Covers	16mm [5/8"]	21mm [13/16"]	37mm [1 7/16"]
Without Bracket Covers	14mm [9/16"]	19mm [3/4"]	33mm [1 5/16"]

Note: Deductions apply to 3" and 4" Brackets

SYSTEM CAPACITY



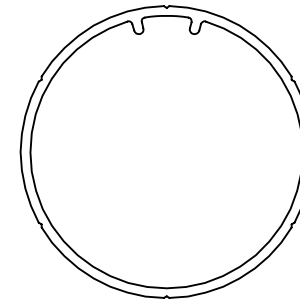
Minimum Blind Width: 670mm / 26.4inches
 G200 36" Spring Assist: 1500mm / 43.3inches
 AUTOMATE | Li-ion Q2.0Nm: 770mm / 30.3inches

LEGEND	DESCRIPTION
Light Blue	G200 CHAIN CONTROL*
Dark Blue	AUTOMATE LI-ION Q2.0Nm
Grey	CANNOT BE ACHIEVED OUTSIDE PRODUCT SPECIFICATIONS

*Some blind sizes require a Spring Assist

Parameters:
 Fabric Density: 420gsm / 12.4oz/yd²
 Fabric Thickness: 0.5mm / 0.02inches
 Weight Bar: Bottom Up Rail

TUBE SPECS



1-1/2" Tube
 With tape

CODE: RTEA4UTXX
 OD: 38mm [1 1/2"]
 Length: 4.8m [16ft]