

Skyline 2.0Nm | 28mm

The motorized 28mm 2.0Nm Skyline roller shade system offers multiple tubes to suit a variety of applications. Featuring ARC (Automate Radio Communication), the 28mm 2.0Nm Skyline system provides an intelligent Li-ion battery powered solution.

AESTHETICAL FEATURES

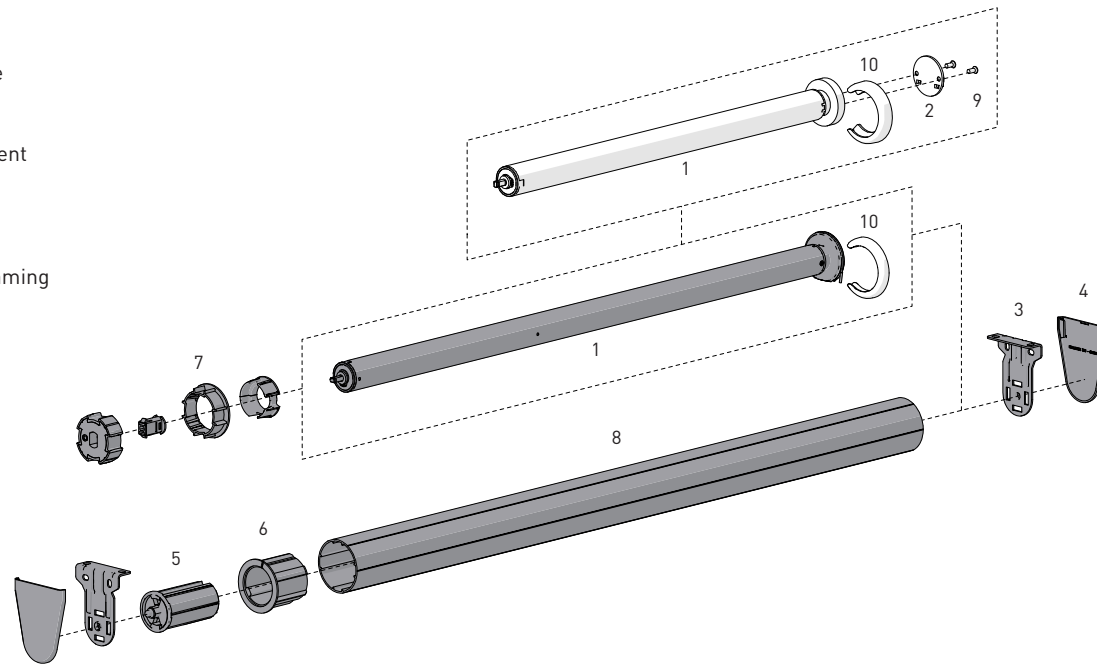
- Thinner Motor Head
- Motor cap to color match with brackets

PRODUCTION & ASSEMBLY FEATURES

- Smaller Motor end deduction
- Greater flexibility during installation with spring loaded pin end
- Crown, drive and adaptors available to suit variety of tube sizes

FUNCTIONAL BENEFITS

- 5V Micro USB Charging
- Antennae Wire Retention Feature
- Levelling control
- Simple limit setting and adjustment
- Favorite position
- 3 operational speed settings
- ARC protocol for simple programming
- 2-WAY RF communication

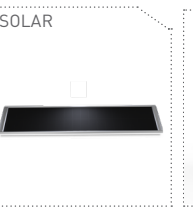
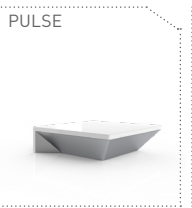
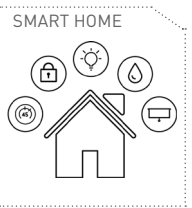


SYSTEM INDEX

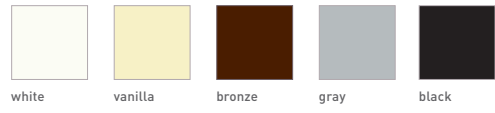
1	Automate Motor 28mm MT01-1328-069001 - Li-ion Q2.0 ZERO MT01-1328-069004 - Li-ion Q2.0 ZERO CT15 MTDCBRFQ28-2 - Li-ion Q2.0 MTDCBRFQ28-2 - Li-ion Q2.0 CTN15 MTDCRFQ28-2 - DCRF Q2.0
2	Adaptor for DCRF Motors MTAD-252835-SL MTAD-25-28-SLV2W - for use with Cap
3	Brackets SLB###x - Skyline Bracket SLNB###x - Skyline Narrow Bracket SL01-0306-xxx040 - Skyline LX Bracket - 40mm pitch SL01-0306-xxx055 - Skyline LX Bracket - 55mm pitch
4	Bracket Covers SLBC###x - Skyline Bracket Cover SLNBC###x - Skyline Narrow Bracket Cover RB08-4151-xxx040 - Skyline LX Bracket Cover - 40mm RB08-4151-xxx055 - Skyline LX Bracket Cover - 55mm
5	Pin End SLPEHD53xx
6	Adaptor RA2xx - for 2" Tube
7	Crown & Drive Kit MT03-0110-069002 - Kit for 1 1/2" Tube MTCRDR-28-2 - Kit for 2" Tube
8	Aluminum Tube RTEA4T## - 1 1/2" Tube RTEA5T## - 2" Tube
9	Screws for Adaptor SLAMSCREW - for MTAD-252835-SL Only
10	Motor Cap MT03-0502-027001 - Chrome - Li-ion ZERO MT03-0502-034001 - Satin Nickel - Li-ion ZERO MT03-0502-043001 - Brass - Li-ion ZERO MT03-0502-059001 - Black - Li-ion ZERO MT03-0502-077001 - White - Li-ion ZERO MT03-0502-079001 - Antique Bronze - Li-ion ZERO MT03-0502-091001 - Gun Metal - Li-ion ZERO MTCAP-25-BK -Black - for DCRF MTCAP-25-W - White - for DCRF MTCAP-25-AB - Antique Bronze - for DCRF MTCAP-25-SN - Satin Nickle - for DCRF

= Size | xxx= Color

CONTROL OPTIONS CHARGERS OPTIONS UPGRADES COLOR RANGE

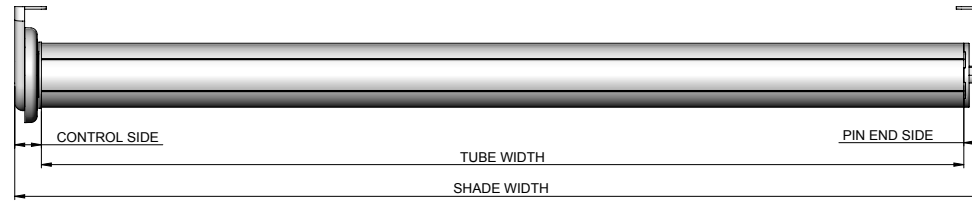


- CASSETTE 80/100/120
- FASCIA 3"/4"/5"
- LINK SYSTEM
- POCKETS 3"/4"/5"/6"



SPECIFICATIONS

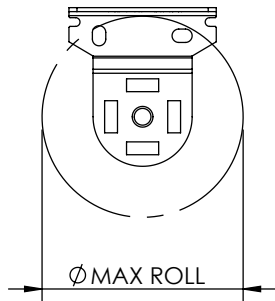
DEDUCTION CHART



MINIMUM SHADE WIDTH			MOTOR	TUBE	BRACKETS*	DEDUCTIONS			
TUBE	MOTOR	LENGTH				CONTROL END	PIN END	TOTAL	
1½"	MT01-1328-069001	2.53' [0.770m]	MT01-1328-069001	1½" OR 2"	With Covers	0.71" [18mm]	0.59" [15mm]	0.91" [23mm]	
	MTDCBRFQ28-2	2.53' [0.770m]				No Covers	0.63" [16mm]	0.55" [14mm]	1.18" [30mm]
	MTDCRFQ28-2	1.84' [0.560m]			With Covers		0.83" [21mm]	0.59" [15mm]	1.42" [36mm]
2"	MT01-1328-069001	2.51' [0.765m]	MTDCBRFQ28-2 MTDCRFQ28-2	2"		No Covers	0.75" [19mm]	0.55" [14mm]	1.30" [33mm]
	MTDCBRFQ28-2	2.51' [0.765m]					With Covers	0.83" [21mm]	0.59" [15mm]
	MTDCRFQ28-2	1.82' [0.555m]			No Covers	0.75" [19mm]		0.55" [14mm]	1.30" [33mm]

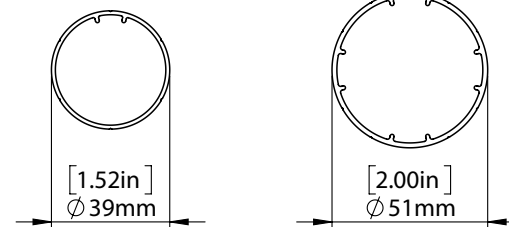
NOTES:
* DEDUCT 2MM FROM BRACKET COVERS TOTAL FOR LX SKYLINE BRACKET + COVERS VALUES.

MAX ROLL



BRACKET/SYSTEM	MAX ROLL SIZE
SLNBxx650xx	2-3/8" [59mm]
SLxx660xx	3" [76mm]
SLxx680xx	4" [102mm]
SL01-0306-xxx040	2-15/16" [74mm]
SL01-0306-xxx055	4-1/16" [103mm]

TUBE SPECS.



1½" Tube

Code: RTEA4T12 (with tape)
RTEA4U12
RTEA4T16 (with tape)
RTEA4U16

Length 12',16'
[3.66m, 4.88m]

2" Tube

Code: RTEA5T12 (with tape)
RTEA5U12
RTEA5T16 (with tape)
RTEA5U16

Length 12',16'
[3.66m, 4.88m]

MAX LIFTING CAPACITY			MAX DROP*
MOTORS	1-½" TUBE	2" TUBE	
2.0Nm	23.3lbs [10.6kg]	17.6lbs [8.0kg]	13.1' [4m]

* Recommended Max Drop. Exceeding this value may cause fabric tracking issues

SYSTEM CAPACITY

