



R-SERIES FASCIA - 3&4 inch Chain Control

PRODUCT SPECIFICATIONS

CONTENTS

SECTION A OVERVIEW		01
GENERAL SCHEMATICS		01
SYSTEM OPTIONS		02
COLOR OPTIONS ..		02
SECTION B SPECIFICATION IMAGES		03
ARCHITECTURAL VIEWS		03
MAXIMUM ROLL DIAMETERS		04
FASCIA DEDUCTIONS + NOTCH		04
TUBE DEDUCTIONS + LIGHT GAP		05
SECTION C ASSEMBLY & INSTALLATION		06
3" FASCIA - R-SERIES		06
4" FASCIA - R-SERIES		07

DISCLAIMER

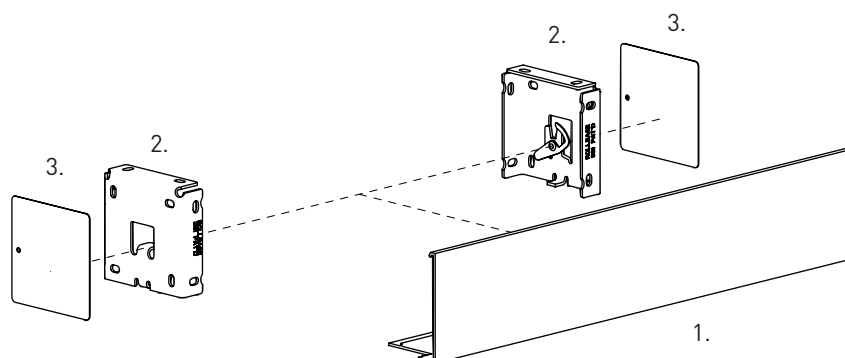
INTRODUCTION
This Product Specifications manual for R-Series 3&4" Fascia has been produced by Rollease Acmeda to supply the necessary information for the safe and correct installation of R-Series 3&4" Fascia.

DISCLAIMER
Rollease Acmeda has used reasonable care in preparing the information included in this document, but makes no representations or warranties as to the completeness or accuracy of the information. Information is supplied upon the condition that the persons receiving the information will make their own determination as to its suitability for their purposes prior to use. Rollease Acmeda assumes no liability whatsoever for any damages incurred by you resulting from errors in or omissions from the information included herein. Rollease Acmeda reserves the right to make changes without further notice to any products to improve reliability, function or design.

COPYRIGHT
COPYRIGHT © ROLLEASE ACMEDA
All rights are reserved. No part of this document may be reproduced or utilised in any means, by any means, electronic or mechanical including photocopying, recordings, or by any information storage or retrieval system, without the express permission from Rollease Acmeda.

GENERAL SCHEMATICS

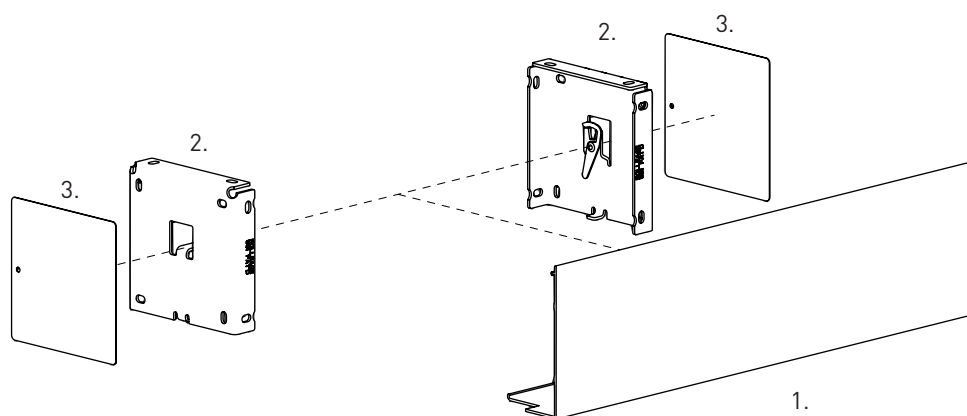
3" FASCIA



SYSTEM INDEX:

1. 3" R-Series Square Fascia
2. 3" R-Series Fascia Bracket Set
3. 3" R-Series Fascia Face Plate Pair

4" FASCIA



SYSTEM INDEX:

1. 4" R-Series Square Fascia
2. 4" R-Series Fascia Bracket Set
3. 4" R-Series Fascia Face Plate Pair

SYSTEM OPTIONS

CONTROL OPTIONS



COLOR OPTIONS



WHITE



VANILLA



ANODISED



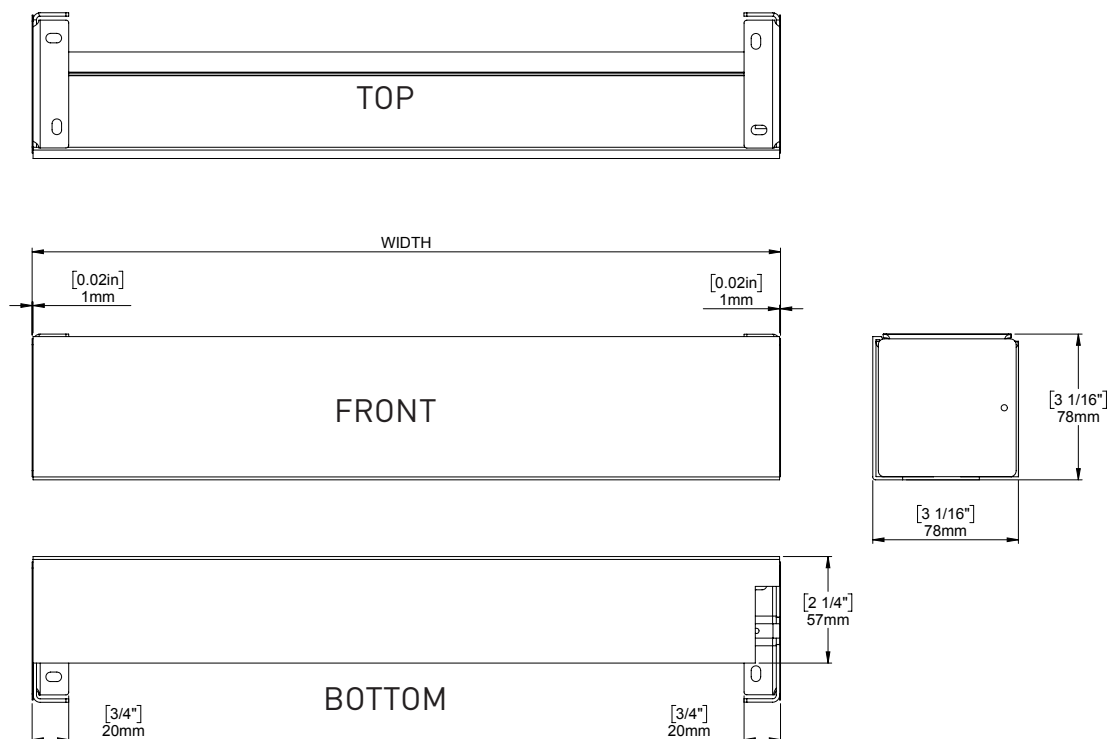
BLACK



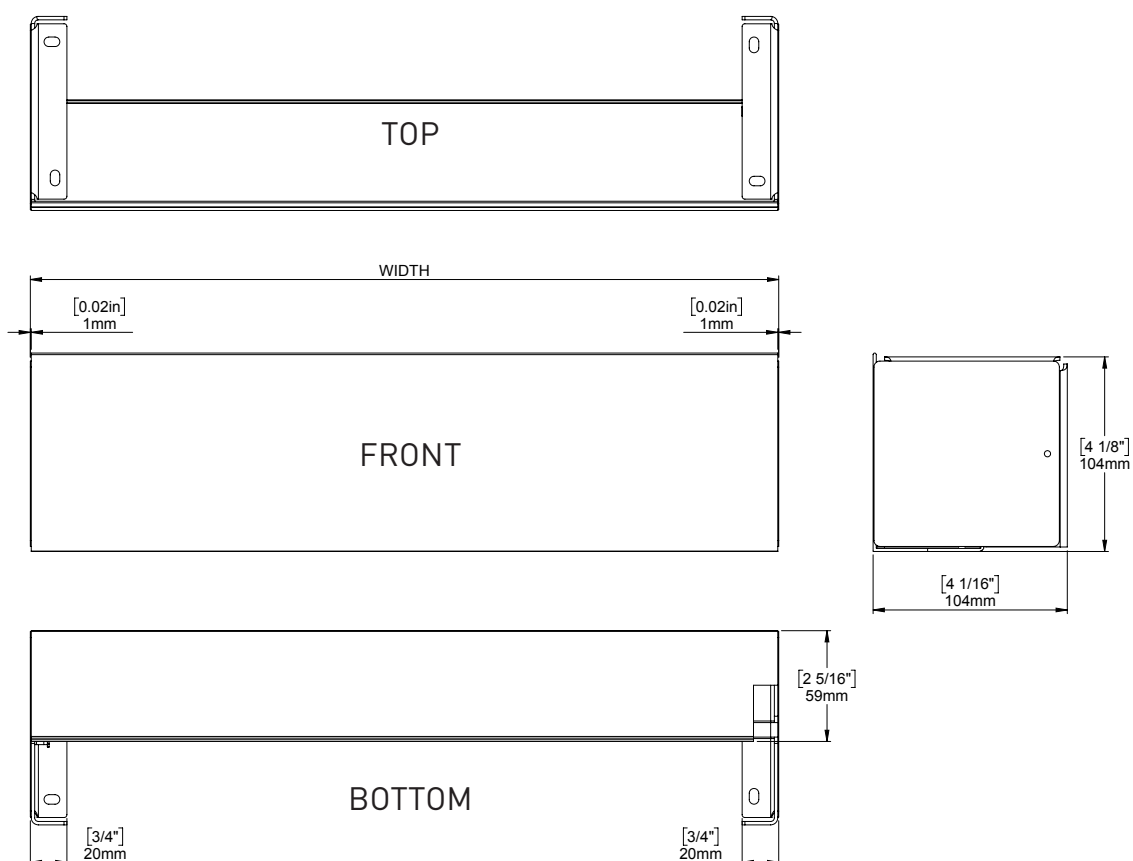
BRONZE

ARCHITECTURAL VIEWS

3" FASCIA

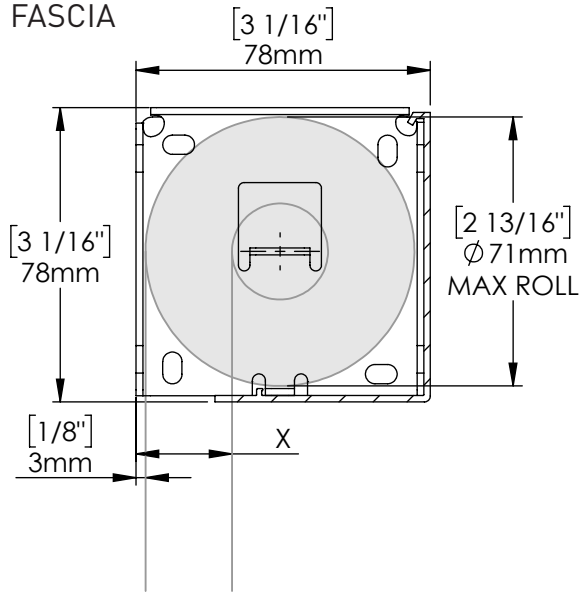


4" FASCIA

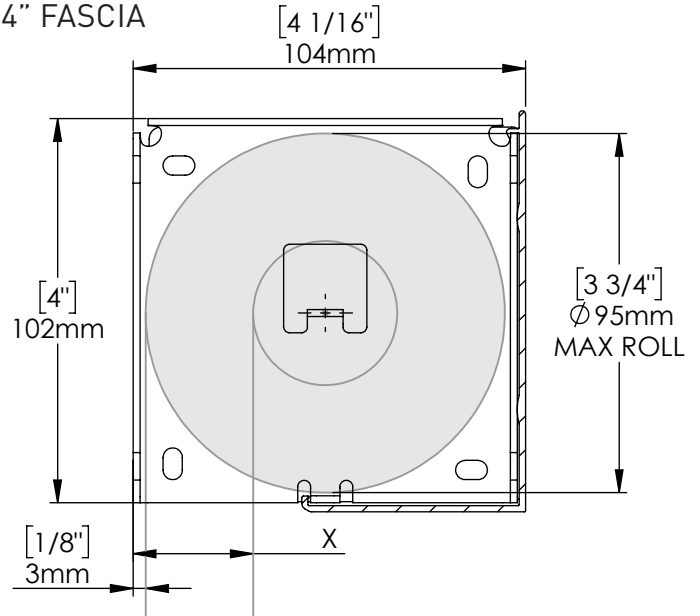


MAXIMUM ROLL DIAMETERS

3" FASCIA



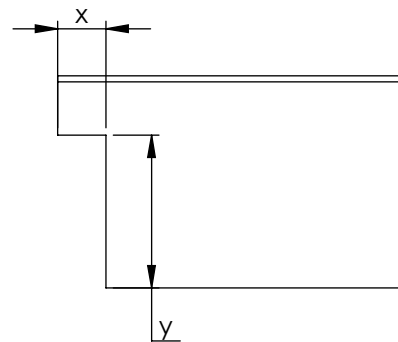
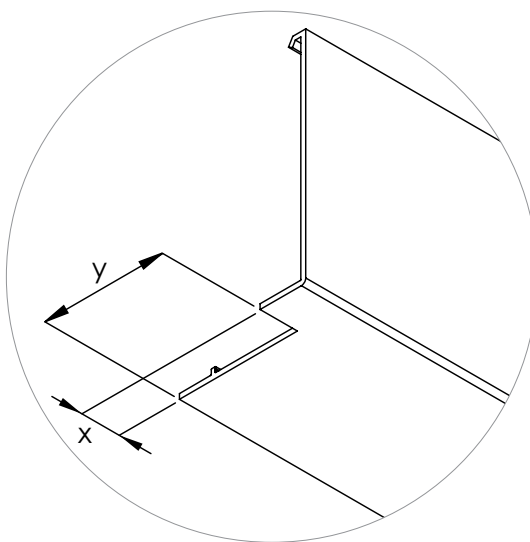
4" FASCIA



System	Tube	Max Distance from back of bracket X
3"	1"	25mm [1"]
	1-1/8"	24mm [15/16"]
	1-1/4"	22mm [7/8"]
	1-1/2"	19mm [3/4"]

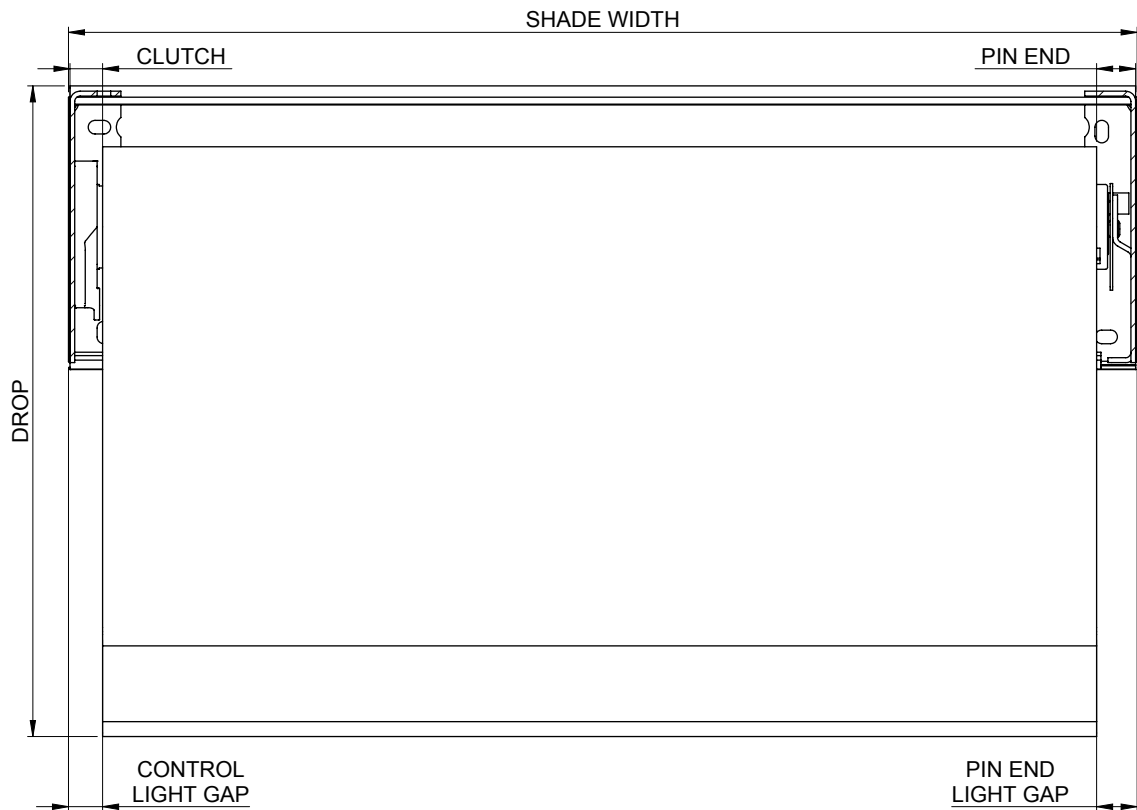
System	Tube	Max Distance from back of bracket X
4"	1-1/2"	32mm [1-1/4"]
	2"	26mm [1"]
	2-1/2"	19mm [3/4"]
	3-1/4"	9mm [3/8"]

FASCIA DEDUCTIONS + NOTCH



CONFIGURATION	NOTCH DIMENSIONS		FASCIA DEDUCTIONS		
	x	y	With Bracket Covers	Without Bracket Covers	
3" FASCIA PANEL FOR R8 CLUTCH	13mm [1/2"]	41mm [1 - 5/8"]	Shade Width - 2mm [0.08"]	Shade Width	
3" FASCIA PANEL FOR R16 CLUTCH					
4" FASCIA PANEL FOR R16 CLUTCH	14mm [9/16"]	51mm [2"]			
4" FASCIA PANEL FOR R24 CLUTCH					
4" FASCIA PANEL FOR G200 CLUTCH	13mm [1/2"]	41mm [1 - 5/8"]			
4" FASCIA PANEL FOR G400 CLUTCH	14mm [9/16"]	51mm [2"]			

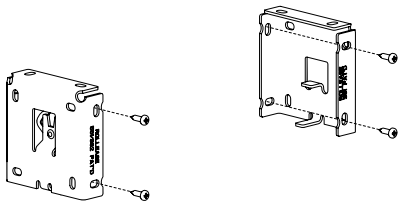
TUBE DEDUCTIONS + LIGHT GAP



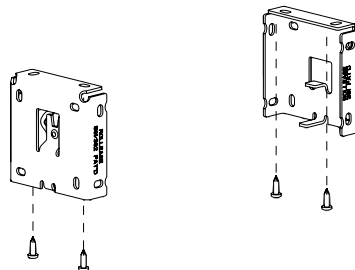
System	Tube	Clutch	Brackets	Pin End	Adapter	Tube Deduction		Light Gap with Bracket Covers*	
						With Bracket Covers	Without Bracket Covers	Control Side	Pin End Side
3"	1"	R8	RB362RTNxx	REP02xx	-	29mm [1.15"]	27mm [1.07"]	14mm [0.56]	15mm [0.59"]
	1-1/8"	R8		REP01xx					
	1-1/4"	R8		REP03xx					
	1-1/2"	R8		REP53xx					
	1-1/2"	R16	RB561RTNxx	REP53xx		32mm [1.24"]	30mm [1.16"]	17mm [0.65"]	15mm [0.59"]
4"	1-1/2"	R16	RB581RTNxx	REP53xx	-	32mm [1.24"]	30mm [1.16"]	17mm [0.65"]	15mm [0.59"]
	1-1/2"	R24		REP53xx	-	32mm [1.24"]	30mm [1.16"]	17mm [0.65"]	15mm [0.59"]
	2"	R24		REP53xx	RA2xx	32mm [1.24"]	30mm [1.16"]	17mm [0.65"]	15mm [0.59"]
	2"	G200		REP53xxSS	RA2xx	33mm [1.28"]	31mm [1.20"]	18mm [0.69"]	15mm [0.59"]
	2-1/2"	G200		REP53xxSS	RA25xx	34mm [1.34"]	32mm [1.26"]	18mm [0.71"]	16mm [0.63"]
	1-1/2"	G400		REP53xxSS	-	32mm [1.24"]	30mm [1.16"]	17mm [0.65"]	15mm [0.59"]
	2"	G400		REP53xxSS	RA2xx	32mm [1.24"]	30mm [1.16"]	17mm [0.65"]	15mm [0.59"]
	2-1/2"	G400		REP53xxSS	RA25xx	33mm [1.28"]	31mm [1.20"]	18mm [0.69"]	15mm [0.59"]
	3-1/4"	G400		REP53xxSS	RA25xx				
	NOTES	*Deduct 1mm [0.04"] from each side to for Light Gap "without bracket covers" value							

3" FASCIA - R-SERIES

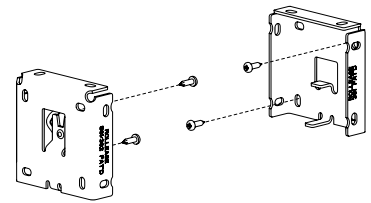
Wall Mount



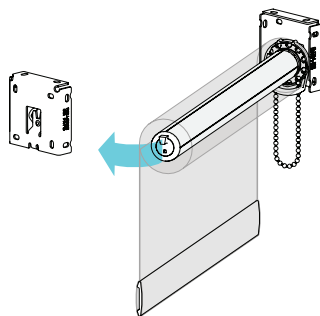
Ceiling Mount



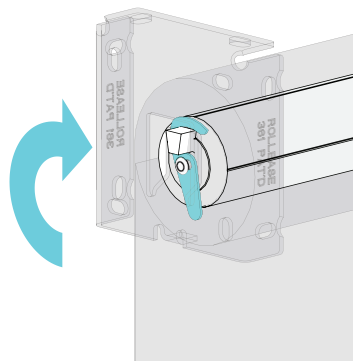
Inside Mount



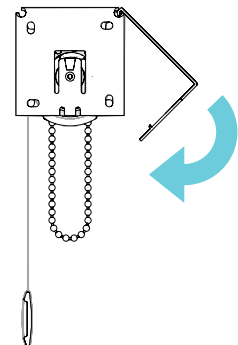
Attach Clutch, swing assembly to bracket



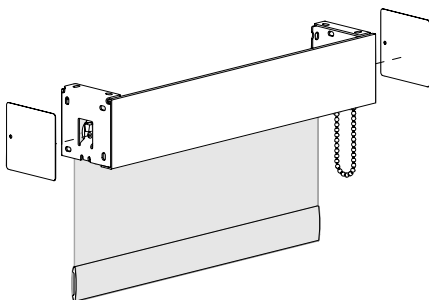
Rotate Hook over pin end



Attach Fascia Cover. Swing from top

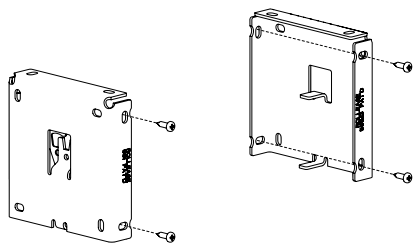


Attach Face Plates

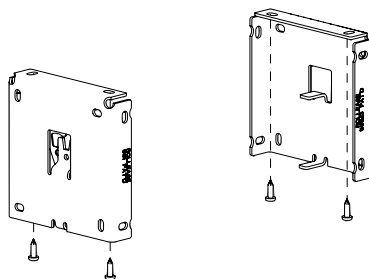


4" FASCIA - R-SERIES

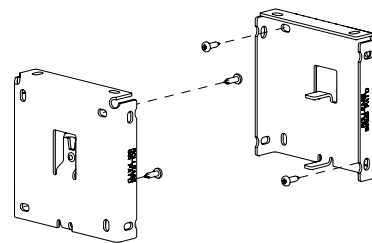
Wall Mount



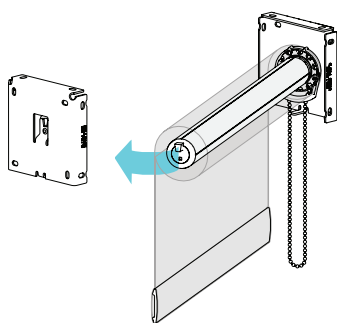
Ceiling Mount



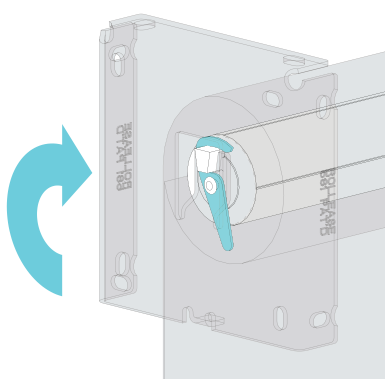
Inside Mount



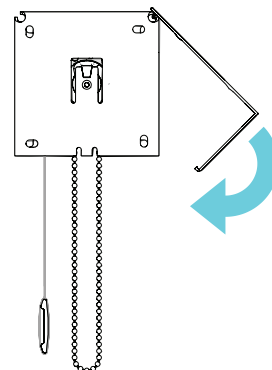
Attach Clutch, swing assembly to bracket



Rotate Hook over pin end



Attach Fascia Cover. Swing from top



Attach Face Plates

