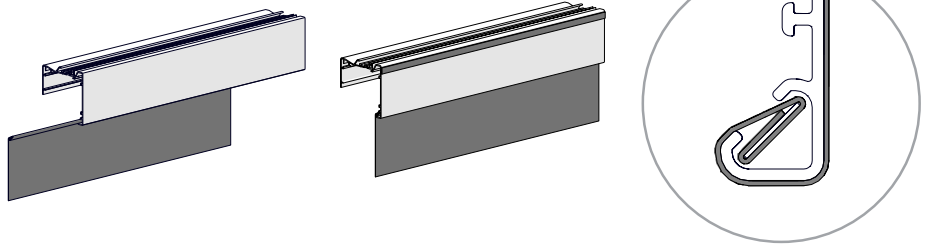


ASSEMBLY

FABRIC WRAP (OPTIONAL)

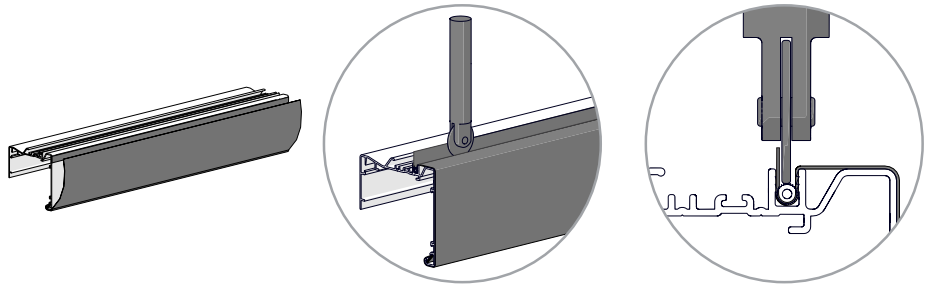
STEP 1: Wrap the fabric around a taped 9mm spline and slide into the key way as shown in the illustration.

Attach additional double sided tape to the top of the extrusion as shown in the illustration.

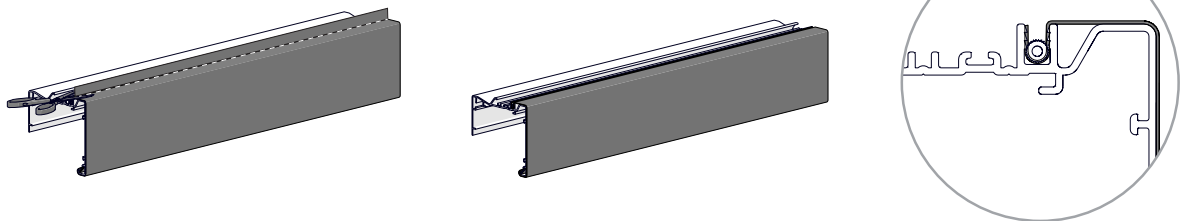


STEP 2: Securely attach fabric to double sided tape.

Use spline roller tool to embed round spline and fabric in the square cassette.



STEP 3: Trim any excess fabric with a scissor.

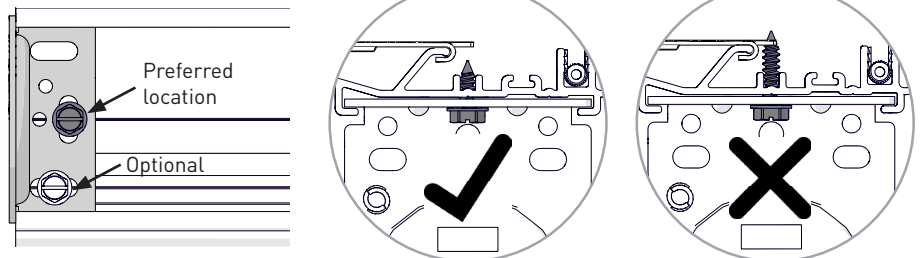


HARDWARE

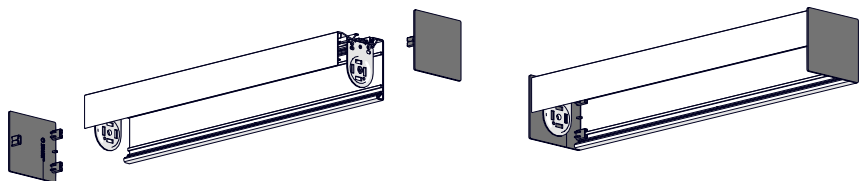
STEP 1: Slide brackets into square cassette.

Fasten in place with #6, 3/8" Screw

Note: Don't exceed 3/8" (10mm) screw length.

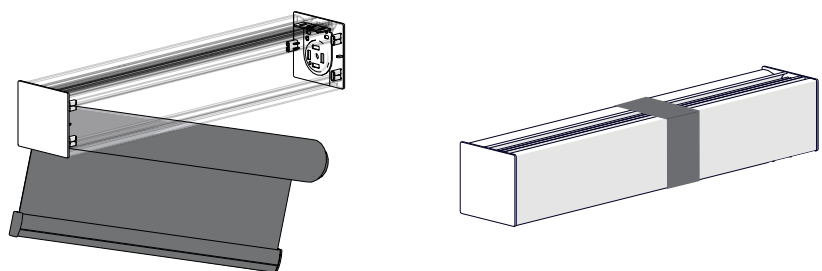


STEP 2: Attach end caps by aligning it with the cassette and push into place.



STEP 3: Install roller shade.

Secure center of roller to square cassette using paper wrap or other means to ensure product is not damaged during shipping.

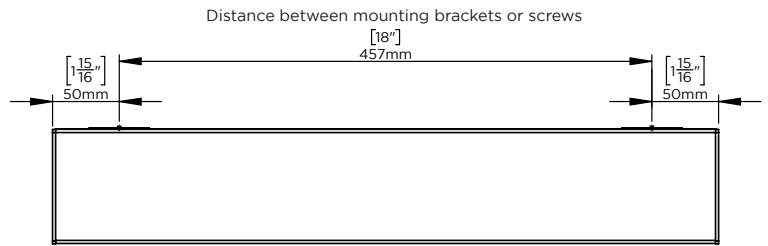


INSTALLATION

STEP 1: Installation with or without mounting bracket

Note: 1 mounting bracket or 1 screw every 18". Number of mounting brackets or screws will vary according to the length of the shade.

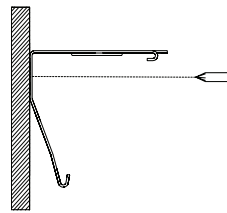
Keep a minimum distance of 50mm from the edge of the assembly and center of mounting bracket and screw.



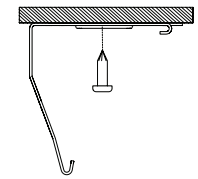
STEP 2: Installation options with mounting brackets

Note: Use an appropriate screw type and length based on the type of material being installed.

FACE WALL MOUNT

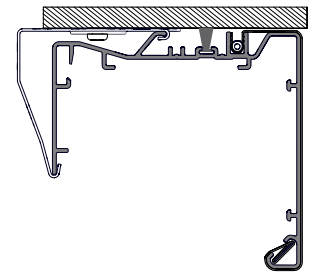
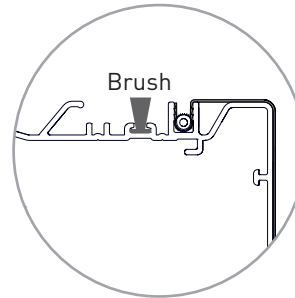


TOP CEILING MOUNT

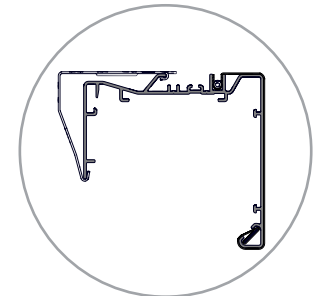
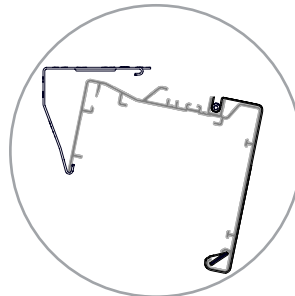


STEP 2.1 (OPTIONAL): Installation options with screws

Note: The light block fabric brush is an optional feature



STEP 3 :Attach square cassette assembly to mounting brackets as illustrated.



STEP 4: Complete installation

