

**S45 AUTOMATE 1.1Nm | 25mm**

The motorized 25mm 1.1Nm S45 roller shade system offers two motors for multiple tube diameters to suit a variety of applications. Featuring ARC (Automate Radio Communication), the motorized 25mm 1.1Nm S45 system provides an intelligent, Li-ion battery powered solution.

**AESTHETICAL FEATURES**

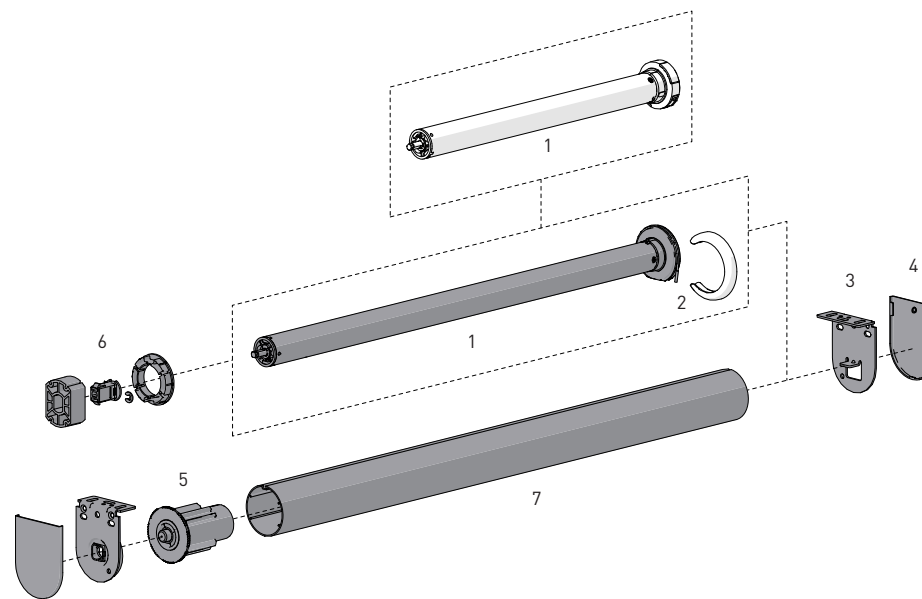
- Thinner 5V Motor Head
- Motor cap to color match with brackets

**PRODUCTION & ASSEMBLY FEATURES**

- Greater flexibility with installation with extendable pin end
- Crown, drive and adaptors available to suit multiple tube sizes
- Smaller Motor end deduction

**FUNCTIONAL BENEFITS**

- 5V Micro USB Charging
- Antennae Wire Retention Feature
- Levelling control
- Simple limit setting and adjustment
- Favorite position
- 3 operational speed settings
- 2-WAY RF communication
- ARC protocol for simple programming



**SYSTEM INDEX**

- Automate Motor | 25mm  
 MT01-1325-069003 - Li-ion 1.1 ZERO 5V  
 MT01-1325-069005 - Li-ion 1.1 ZERO 5V (SHORT)  
 1 MTDCBRF25-1.1 - Li-ion 12V  
 MTDCBRF25-1.1CT - Li-ion 12V BULK 20

- Motor Cap  
 MT03-0502-027001 - Chrome - 5V ZERO ONLY  
 MT03-0502-034001 - Satin Nickel - 5V ZERO ONLY  
 2 MT03-0502-043001 - Brass - 5V ZERO ONLY  
 MT03-0502-059001 - Black - 5V ZERO ONLY  
 MT03-0502-077001 - White - 5V ZERO ONLY  
 MT03-0502-079001 - Antique Bronze 5V ZERO ONLY  
 MT03-0502-091001 - Gun Metal - 5V ZERO ONLY

- Brackets  
 3 RB09-0352-xxx0XX - Li-ion ZERO Brackets  
 RB40-9355-xxx0XX - DCRF Brackets

- Bracket Covers  
 4 RB08-4151-xxx0XX  
 RB08-4152-xxx0XX

- Pin End  
 5 RB09-0245-xxx001

- Crown & Drive Set | 25mm DC  
 6 MTCRDR-25-S45

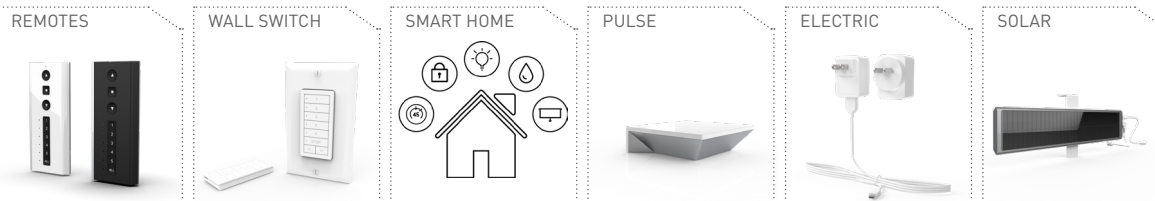
- S45 T-Spline Aluminum Tubes  
 7 RB93-X443-000490 - Light  
 RB93-X444-000490 - Standard  
 RB93-X449-000490 - Heavy Duty

# = Size  
 xxx = Color  
 X = catalogue options

**COLOUR RANGE**



**CONTROL OPTIONS**



**CHARGERS**

**OPTIONS**

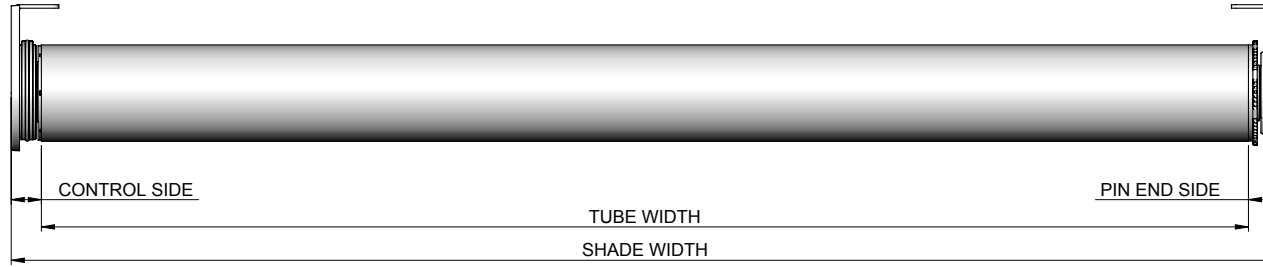


**SYSTEM UPGRADES**

- PELMET 95
- EASY-LINK
- CF90
- MOUNTING RAIL

SPECIFICATIONS

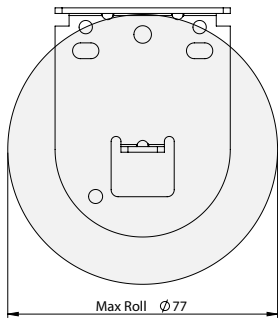
DEDUCTION CHART



MOTOR	MINIMUM SHADE WIDTH
MT01-1325-069003	2.13' [0.650m]
MT01-1325-069005	1.89' [0.575m]
MTDCRF25-1.1	1.30' [0.395m]
MTDCBRF25-1.1	1.97' [0.600m]

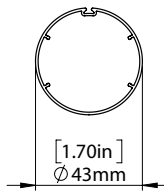
MOTOR	BRACKETS	LIGHT GAP		TUBE DEDUCTION
		CONTROL END	PIN END	
MT01-1325-069003 MT01-1325-069005	With Covers	0.51" [13mm]	0.55" [14mm]	1.06" [27mm]
	No Covers	0.47" [12mm]	0.51" [13mm]	0.98" [25mm]
MTDCRF25-1.1 MTDCBRF25-1.1	With Covers	0.59" [15mm]	0.55" [14mm]	1.14" [29mm]
	No Covers	0.55" [14mm]	0.51" [13mm]	1.06" [27mm]

MAX ROLL



BRACKET	MAX ROLL SIZE
RB09-0352-xxx040	3.03" [77mm]
RB09-0352-xxx050	4.13" [105mm]

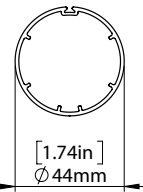
TUBE SPECS.



S45 Light Tube

Code RB93-0443-000490  
w. tape RB93-6443-000490

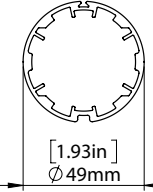
Length 16' [4.88m]



S45 STD Tube

Code RB93-0444-000490  
w. tape RB93-6444-000490

Length 16' [4.88m]



S45 HD Tube

Code RB93-0449-000490  
w. tape RB93-6449-000490

Length 16' [4.88m]

MAX LIFTING CAPACITY				MAX DROP**
MOTORS	S45 LT	S45 STD	S45 HD	S45
1.1Nm	11.4lbs [5.2kg]	11.2lbs [5.1kg]	10.1lbs [4.6kg]	13.1' [4m]

Exceeding these value may cause fabric tracking issues

SYSTEM CAPACITY

