

R-Series 3.0Nm | 35mm

The motorized R-Series roller shade system offers a range of four Automate motors with one tube diameter to suit a variety of applications. Featuring ARC (Automate Radio Communication), the 35mm R-Series Automate system provides an intelligent, Li-ion battery, AC, or a DC powered solution.

AESTHETIC FEATURES

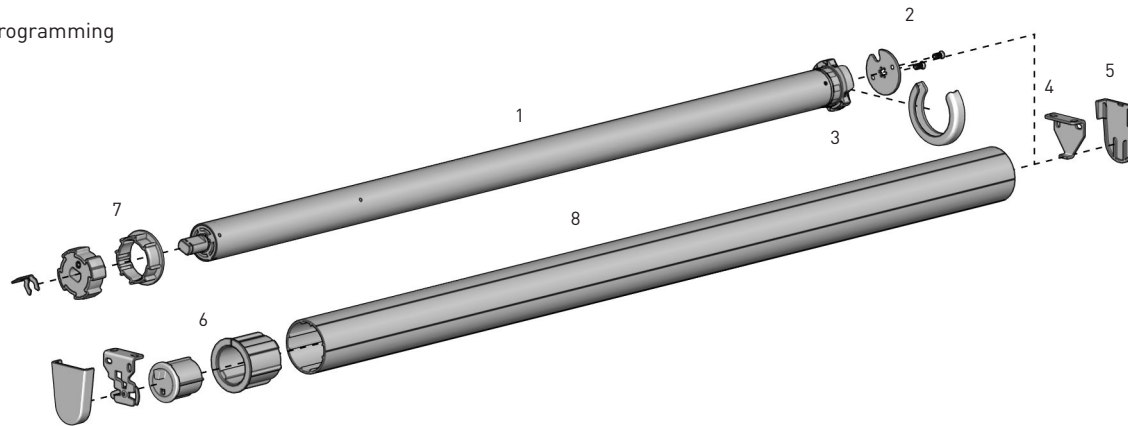
- Slim motor head for minimal light gap

ASSEMBLY / PRODUCTION FEATURES

- Crown, drive and adapters available to suit variety applications

FUNCTIONAL BENEFITS

- Leveling control
- Simple limit setting and adjustment
- Favorite position
- 3 operational speed settings
- 2-way RF communication
- ARC protocol for simple programming

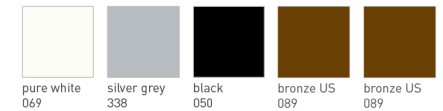


SYSTEM INDEX

Automate Motor 35mm	
1	MTDCBRF35-3 - Wire-free Li-ion 3 Motor MTDCRF35-3 - DCRF 3.0
Motor Adaptor + Screws	
2	MTAD-252835-RS + SLAMSCREW
Motor Cap	
3	MTCAP35xx
R-Series Brackets	
4	RB360xx RB380xx RB390xx
R-Series Bracket Covers	
5	RBPC360xx RBPC380xx
Pin End & Adaptor	
6	REP53xx + RA2
Crown and Drive Kit	
7	MTCRDR-35-2
Aluminum Tube	
8	RTEAST## - 2" tube

- Size
xxx= Color

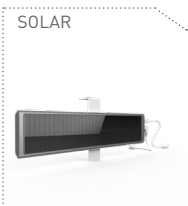
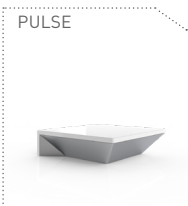
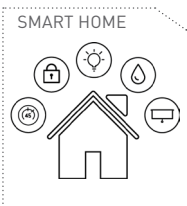
COLOUR RANGE



SYSTEM UPGRADES

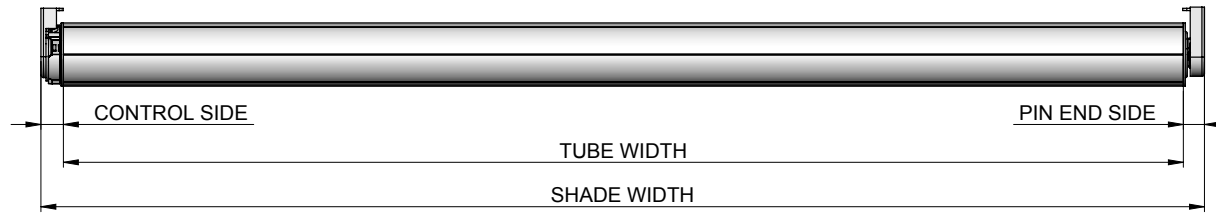
- CASSETTE 80/100/120
- FASCIA 3"/4"/5"
- LINK SYSTEM
- POCKETS 3"/4"/5"/6"

CONTROL OPTIONS CHARGERS PRODUCT OPTIONS



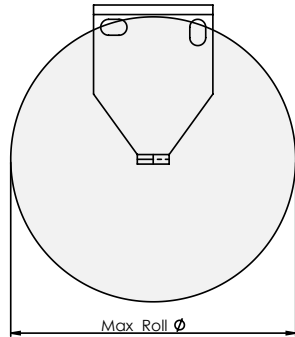
SPECIFICATIONS

DEDUCTION CHART



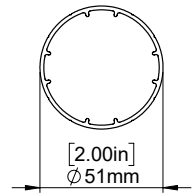
MOTOR	BRACKETS	PIN END	CONTROL SIDE	OVERALL DEDUCTION
MTDCBRF35-3 MTDCRF35-3 MTACRF35-6 MTACQRF35-6	With Bracket Covers	0.67" (17mm)	0.71" (18mm)	1.38" (35mm)
	No Bracket Covers	0.59" (15mm)	0.63" (16mm)	1.22" (31mm)

MAX ROLL



BRACKET	MAX ROLL SIZE
RB360	2-11/16" [69mm]
RB380	3-10/16" [92mm]
RB390	4" [101mm]

TUBE SPECS.



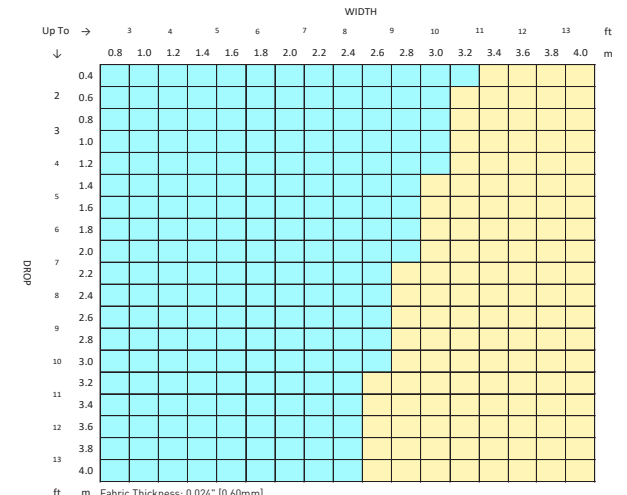
2.0" Tube

Code: RTEA5T12 (with tape)
RTEA5U12
RETA5T16(with tape)
RTEA5U16
OD: 2.0" (51mm)
Length: 12', 16'
(3.66m, 4.88m)

MAX DROP
2" Tube
11.5' [3.40m]**
13.12' [4.00m]*

* Recommended Max Drop. Exceeding this value may cause fabric tracking issues
** RB360 ONLY

3.0Nm SYSTEM CAPACITY



Fabric Thickness: 0.024" [0.40mm]
Fabric Density: 12.39oz/yd² [420gsm]
Weight Bar: D30 Silent Medium Aluminium Bottom Rail

CONTROL	TUBE	LINK SYSTEM
35mm Tube	RTEA5T# - 2.0"	