

R-Series 2.0Nm | 28mm

The motorized 28mm 2.0Nm R-Series roller shade system offers multiple tubes to suit a variety of applications. Featuring ARC (Automate Radio Communication), the 28mm 2.0Nm R-Series system provides an intelligent Li-ion battery powered solution.

**AESTHETICAL FEATURES**

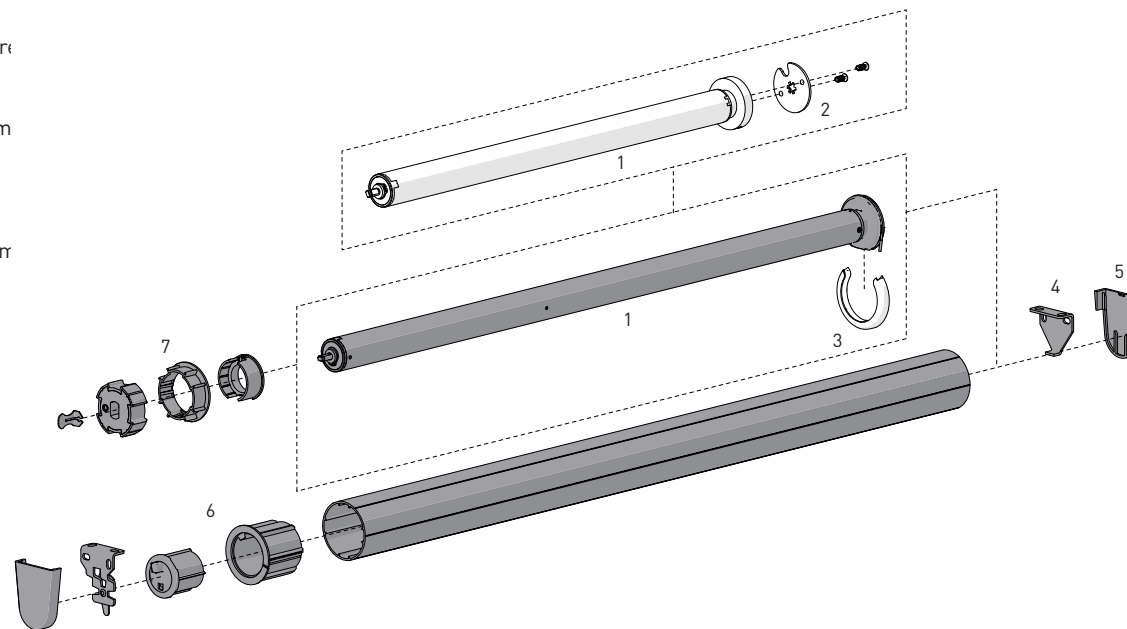
- Thinner Motor Head
- Motor cap to color match with brackets

**PRODUCTION & ASSEMBLY FEATURES**

- Smaller Motor end deduction
- Crown, drive and adapters available to suit variety of tube sizes

**FUNCTIONAL BENEFITS**

- 5V Micro USB Charging
- Antennae Wire Retention Feature
- Levelling control
- Simple limit setting and adjustm
- Favorite position
- 3 operational speed settings
- ARC protocol for simple program
- 2-WAY RF communication



**SYSTEM INDEX**

1 Automate Motor | 28mm  
 MT01-1328-069001 - Li-ion ZERO Q2.0  
 MT01-1328-069004 - Li-ion ZERO Q2.0 CT15  
 MTDCRFQ28-2 - DCRF Q2.0  
 MTDCBRFQ28-2 - Li-ion Q2.0  
 MTDCBRFQ28-2CT - Li-ion Q2.0 CTN15

2 Motor Adaptor + Screws MTDCRF ONLY  
 MTAD-252835-RS + SLAMSCREW

3 Motor Cap - ZERO ONLY  
 MT03-0502-027001 - Chrome  
 MT03-0502-034001 - Satin Nickel  
 MT03-0502-043001 - Brass  
 MT03-0502-059001 - Black  
 MT03-0502-077001 - White  
 MT03-0502-079001 - Antique Bronze  
 MT03-0502-091001 - Gun Metal

4 Brackets  
 RB360xx - R8 1 1/2" Set  
 RB380xx - R8 2" Set  
 RB390xx - R8 2-7/8" Set

5 Bracket Covers  
 RBPC360xx  
 RBPC380xx

6 Pin End + Adapter  
 REP53xx - 1 1/2" tube  
 REP53xx + RA2xx - 2" tube with Adapter

7 Crown and Drive Kit  
 MTCRDR-28-1.5 - 1 1/2" tube  
 MTCRDR-28-2 - 2" tube

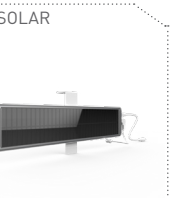
8 Aluminum Tube  
 RTEA4T## - 1 1/2" tube  
 RTEA5T## - 2" tube

# - Size  
 xxx= Color

**COLOR RANGE**



**CONTROL OPTIONS**



**OPTIONS**



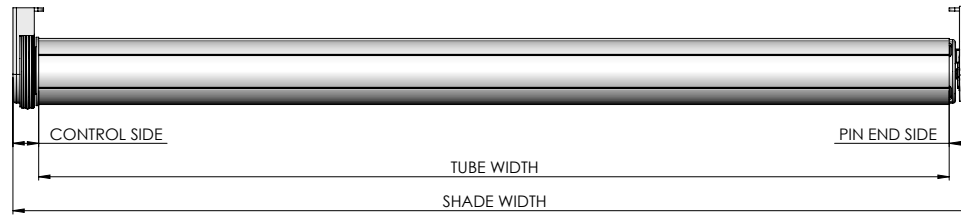
**CHARGERS**

**SYSTEM UPGRADES**

- CASSETTE 80/100/120
- FASCIA 3"/4"/5"
- LINK SYSTEM
- POCKETS 3"/4"/5"/6"

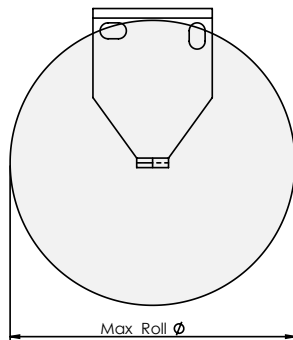
**SPECIFICATIONS**

**DEDUCTION CHART**



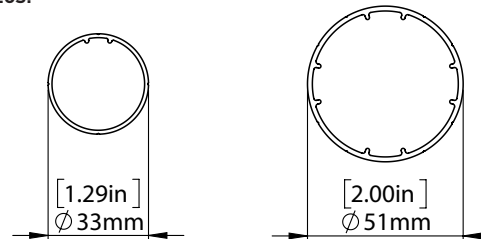
| MINIMUM SHADE WIDTH              |                | TUBE   | MOTOR            | BRACKETS                    | LIGHT GAP    |              |              |              |
|----------------------------------|----------------|--------|------------------|-----------------------------|--------------|--------------|--------------|--------------|
|                                  |                |        |                  |                             | CONTROL END  | PIN END      | OVERALL      |              |
| MT01-1328-069001<br>MTDCBRFQ28-2 | 2.41' [0.735m] | 1 1/2" | MT01-1328-069001 | With Covers                 | 0.63" [16mm] | 0.67" [17mm] | 1.30" [33mm] |              |
|                                  |                |        |                  | No Covers                   | 0.55" [14mm] | 0.59" [15mm] | 1.14" [29mm] |              |
|                                  |                |        |                  | MTDCBRFQ28-2<br>MTDCRFQ28-2 | With Covers  | 0.71" [18mm] | 0.67" [17mm] | 1.38" [35mm] |
|                                  |                |        |                  |                             | No Covers    | 0.63" [16mm] | 0.59" [15mm] | 1.22" [31mm] |
| MTDCRFQ28-2                      | 1.71' [0.520m] | 2"     | MT01-1328-069001 | With Covers                 | 0.63" [16mm] | 0.67" [17mm] | 1.30" [33mm] |              |
|                                  |                |        |                  | No Covers                   | 0.55" [14mm] | 0.59" [15mm] | 1.14" [29mm] |              |
|                                  |                |        |                  | MTDCBRFQ28-2<br>MTDCRFQ28-2 | With Covers  | 0.71" [18mm] | 0.67" [17mm] | 1.38" [35mm] |
|                                  |                |        |                  |                             | No Covers    | 0.63" [16mm] | 0.59" [15mm] | 1.22" [31mm] |

**MAX ROLL**



| BRACKET | MAX ROLL SIZE |
|---------|---------------|
| RB360xx | 2.57" [69mm]  |
| RB380xx | 3.65" [92mm]  |
| RB390xx | 4.00" [101mm] |

**TUBE SPECS.**



**1 1/2" Tube**

Code: RTEA4T12 (with tape)  
RTEA4U12  
RTEA4T16 (with tape)  
RTEA4U16

Length 12', 16'  
(3.66m, 4.88m)

**2" Tube**

Code: RTEA5T12 (with tape)  
RTEA5U12  
RTEA5T16 (with tape)  
RTEA5U16

Length 12', 16'  
(3.66m, 4.88m)

| MOTOR | MAX LIFTING CAPACITY |                    | MAX DROP*     |
|-------|----------------------|--------------------|---------------|
|       | 1-1/2" TUBE          | 2" TUBE            |               |
| 2.0Nm | 23.3lbs<br>[10.6kg]  | 17.6lbs<br>[8.0kg] | 13.1'<br>[4m] |

\* Recommended Max Drop. Exceeding this value may cause fabric tracking issues

**SYSTEM CAPACITY**

