

AUTOMATE™

DCRF Q10

Simplified wiring. Efficient installation. Maintenance free.
This low voltage motor is perfect for medium to extra-large Roller shade applications.



BIDIRECTIONAL COMMUNICATION

Automate Radio Communication utilizes two-way communication to provide up-to-date feedback on battery levels and shade positioning via the Automate Pulse 2 app.



ADJUSTABLE SPEED CONTROL

Three shade speed settings to suit your needs – faster for larger shades, slower for smaller. Features quiet operation when set to the lowest speed setting.



SIMPLIFIED SETUP

Whether using a remote control or app for shade setup, Automate programming instructions are streamlined to have your shades moving as quickly as possible.



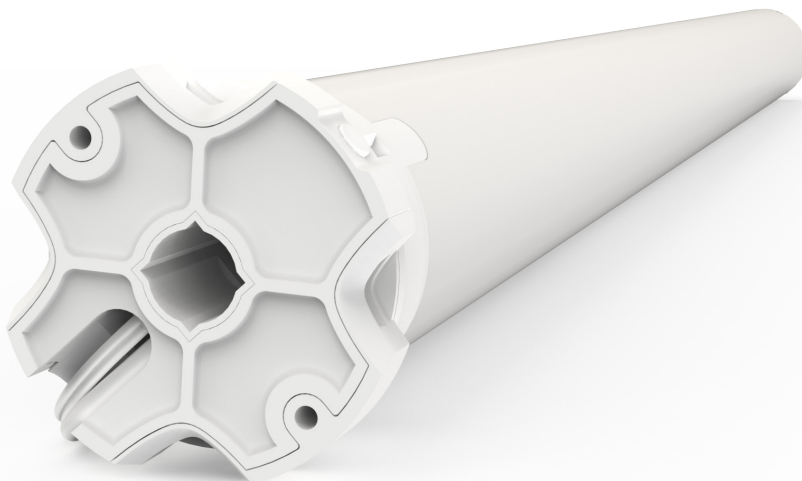
FAVORITE POSITIONING

Add a programmable shade position in addition to the upper and lower limits that can be defined as your "favorite".



PRECISE LIMIT ADJUSTMENT

Incremental steps during limit setting allows for precise positioning of the shade.



7
YEAR
WARRANTY



ARC™ (Automate Radio Communication) is Rollease Acmeda's proprietary technology utilizing 433MHz radio communication with bi-directional feedback that brings Automate motorized shading systems together.

A DIVISION OF
**ROLLEASE
ACMEDA**

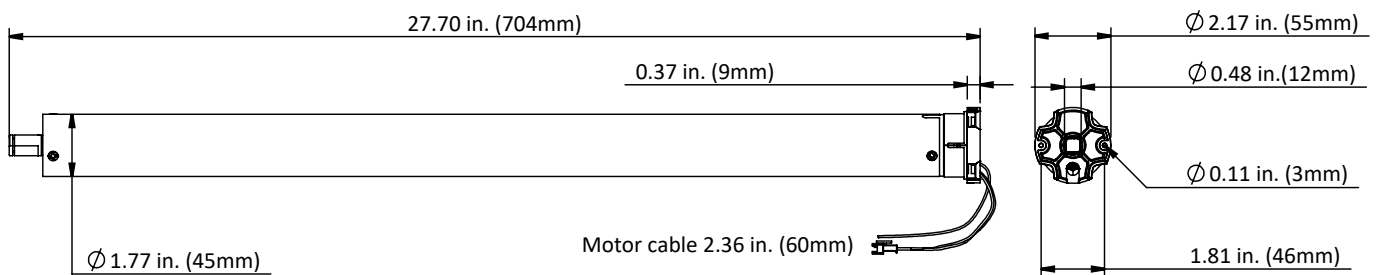
© Rollease Acmeda Pty Ltd

PRODUCT SPECIFICATIONS

Part #: MTDCRF45-10 Automate DCRF Q10

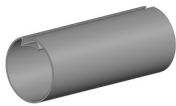
Voltage	12V DC	Limit Switch Type	Electronic
Torque	10.0Nm	Current	2.2A
Max Run Time	10 Min	Battery Size/Type	External Battery Pack
Speed	9 RPM (Adjustable to 8 or 6)	Temp Working Range	32°F to 140°F (0°C to 60°C)
Radio Frequency	433.92 MHz	Insulation Class	III
RF Modulation	FSK	Sound Level	~42 dB
IP Rating	IP44	Power	26W

DIMENSIONS



COMPATIBLE PARTS

Tubes



Crown & Drives



Adaptors



2" Smooth Tube	MTCRDR-45-2SW
2.5" Tube	MTCRDR-45-2.5
3.25" Tube	MTCRDR-45-3.25
S60 Tube	RB56-0336-050502
S80 Tube	RB56-0338-050502

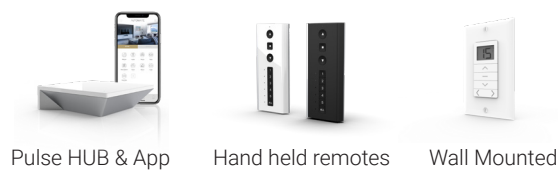
- MTAD-45-SL
- RB56-0721-069518

COMPATIBLE SYSTEMS

- S60/S80 Roller Shades
- Skyline Roller Shades

COMPATIBLE PRODUCTS (refer to catalog for full item listings)

Controllers



Charging Options

