

# NEW PRODUCTS | FABRIC WRAP HEM BAR

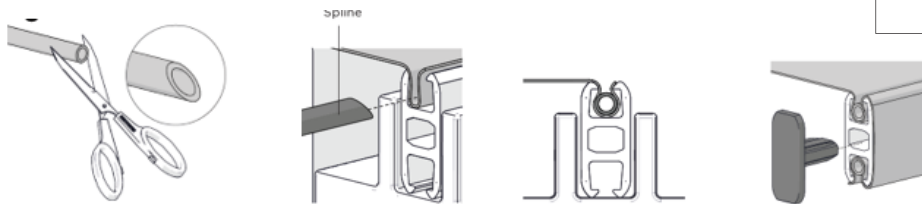
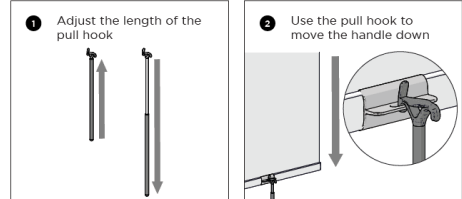
DESCRIPTION	CODE	COLOR (xxx)	SO Multiple	LIST PRICE	PICTURE
Fabric Wrap Hem Bar 16'	RB91-1236-xxx490	White (069) Black (050) Anodized (020)	10 EA	Refer to catalog	
FW Hem Bar End Caps	RB91-2136-xxx001	White (069) Black (050) Gray (338)	100 EA	Refer to catalog	
Hem Bar Handle	RB91-2336-001000	Clear (001)	50 EA	Refer to catalog	
Hem Bar Handle Pull Hook 2ft/4ft Extn	RB91-2536-069000	White (069)	50 EA	Refer to catalog	
Smooth Round Spline   5.0mm x 820ft Roll	SS91-5350-069000	White (069)	1 EA	Refer to catalog	
Hem Bar Fabric Crease Tool	RB92-2001-000000	White (069) Black (050)	10 EA	Refer to catalog	
Oval Ballast 0.2" x 0.3" x 10 ft Length	VB05-0301-025300	Zinc (025)	40 EA	Refer to catalog	

**Available: July 11, 2023**

## FEATURES & BENEFITS

### PRODUCTION / INSTALLATION FEATURES

- Can be half-wrapped, full-wrapped or used as is.
- Slide 5mm round smooth spline from side to fabric wrap for ease of use.
- Snap handle onto hem bar. Can be used on bar with and without fabric.
- Use pull hook to move handle up or down.



### FUNCTIONAL BENEFITS

- Compatible with fabrics up to 0.72mm thickness.
- Compatible with VB05 ballast for additional weight.
- Curved edges for spline retention.
- Compatible with handle and pull hook to avoid tugging on fabric.
- Feature on handle to ensure retention.
- Pull hook available for hard-to-reach shades.

### AESTHETIC FEATURES

- Flush fit symmetrical end caps.
- Aesthetic curved shape.
- Clear handle to maintain shade aesthetics.