

OVERVIEW: SKYLINE SL20 & G200 GALAXY CHAIN CONTROL S45 SYSTEM

The Skyline shading system is the flagship of the Rollease Acmeda product line. Ideal for both residential and commercial applications, the robust SL20 & G200 Galaxy Skyline chain controls offer sleek rounded chain guard profiles to match strength with splendor. Featuring Velvetrol Technology and our limited lifetime warranty, the powerful Skyline G200 Galaxy Clutch expands on the Rollease Acmeda line by featuring an advanced patented gearing technology. The planetary mechanism enhances the lifting capacity by up to 3x's and still only requires minimal user effort.

AESTHETICAL FEATURES

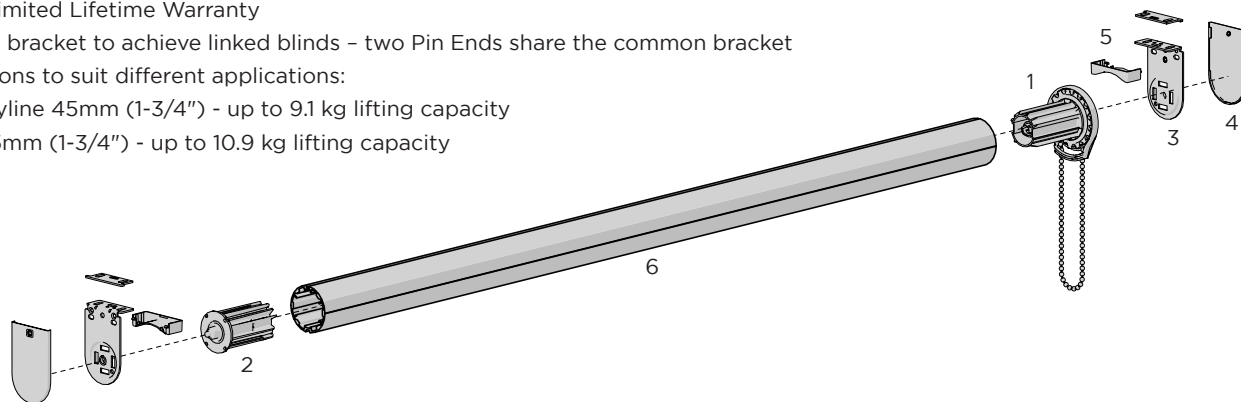
- Sleek, rounded chain guard design
- Reduced light gaps
- Colour coded bracket covers

ASSEMBLY / PRODUCTION BENEFITS

- Greater flexibility in installation with spring-loaded pin end
- Universal brackets
- Hooked clutches for a secure application
- Easy chain attachment

FUNCTIONAL BENEFITS

- Smooth operation
- Patented Velvetrol™ internal spring arrangement
- Guarded chain cover for minimal noise
- Long lasting durability achieved from fibreglass filled nylon construction
- Backed by Limited Lifetime Warranty
- Intermediate bracket to achieve linked blinds – two Pin Ends share the common bracket
- 2 clutch options to suit different applications:
 - SL20 Skyline 45mm (1-3/4") - up to 9.1 kg lifting capacity
 - G200 45mm (1-3/4") - up to 10.9 kg lifting capacity

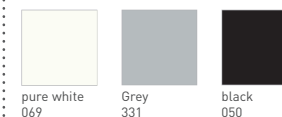


SYSTEM INDEX

1	Skyline Clutch SL20-0103-069045 SL20-G200-075045
2	Skyline Heavy Duty Pin End SL01-0103-069045
3	Skyline LX Bracket SL01-0306-xxx040 SL01-0306-xxx055
4	Skyline LX Bracket Cover RB08-4151-xxx040 RB08-4151-xxx055
5	Skyline Bracket Base Cover RB08-4251-xxx000
6	Aluminum Tube - S45 RB93-0443-000LLL RB93-0444-000LLL RB93-0449-000LLL

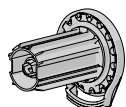
xxx= colour
LLL=size

COLOUR RANGE

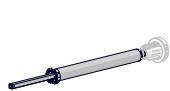
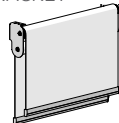


PRODUCT OPTIONS

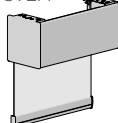
SKYLINE CLUTCH



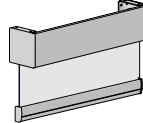
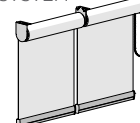
SPRING ASSIST

DOUBLE
BRACKET

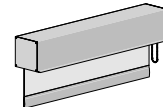
SYSTEM OPTIONS

FRS100 VALANCE
SYSTEM

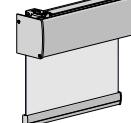
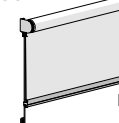
FASCIA 3"/4"/5"

EASY LINK
SYSTEM

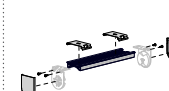
POCKETS



PELMET 95

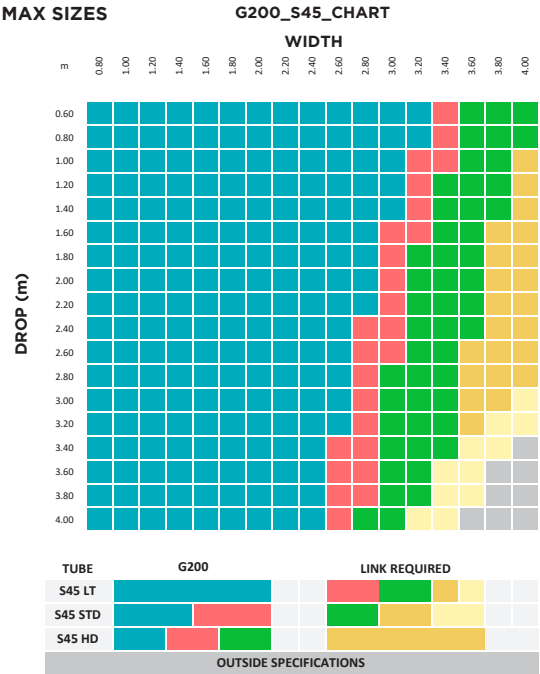
INTERNAL WIRE
GUIDE

MOUNTING RAIL



SPECIFICATIONS

MAX SIZES

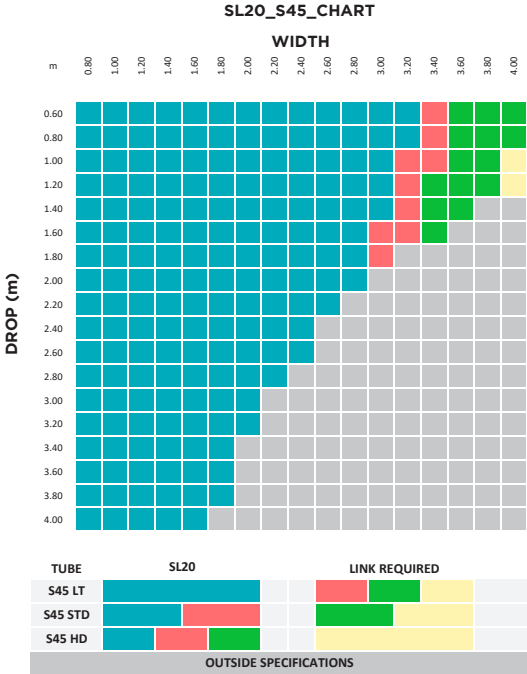


PARAMETERS:

BALMORAL BLOCK-OUT FABRIC, 390gsm, 0.6mm, D30 Bottom Rail

CHART BASED ON ACCEPTABLE USER EFFORT

HOLDING CAPACITY EXCEEDS DATA SHOWN



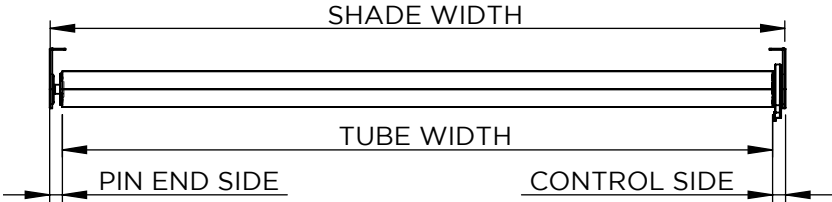
PARAMETERS:

BALMORAL BLOCK-OUT FABRIC, 390gsm, 0.6mm, D30 Bottom Rail

CHART BASED ON ACCEPTABLE USER EFFORT

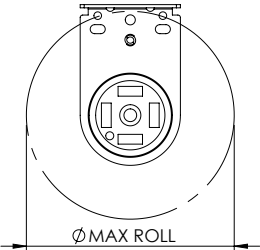
HOLDING CAPACITY EXCEEDS DATA SHOWN

DEDUCTIONS

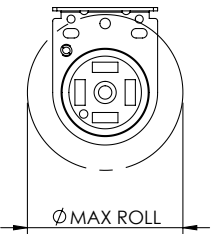


CONTROLS	BRACKETS	BRACKETS	CONTROL END	PIN END	OVERALL DEDUCTION
SL20-0103-069045	SL01-0306-xxx040 SL01-0306-xxx055	With Covers	18mm	18mm	36mm
		No Covers	17mm	17mm	34mm
SL20-G200-075045		With Covers	20mm	18mm	38mm
		No Covers	19mm	17mm	36mm

MAX ROLL



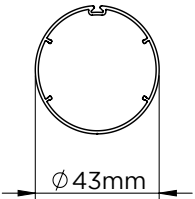
Skyline LX Bracket
55mm Pitch



Skyline LX Bracket
40mm Pitch

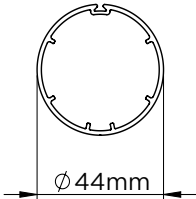
PART NUMBER	DESCRIPTION	MAX ROLL
SL01-0306-xxx055	Skyline LX Bracket 55mm Pitch withOUT Base Cover	103mm
	Skyline LX Bracket 55mm Pitch with Base Cover	95mm
SSL01-0306-xxx040	Skyline LX Bracket 40mm Pitch withOUT Base Cover	74mm
	Skyline LX Bracket 40mm Pitch with Base Cover	68mm

COMPATIBLE TUBE SPECS.



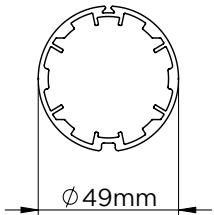
S45 Light Tube

Code RB93-0443-000LLL
w. tape RB93-6443-000LLL



S45 STD Tube

Code RB93-0444-000LLL
w. tape RB93-6444-000LLL



S45 HD Tube

Code RB93-0449-000LLL
w. tape RB93-6449-000LLL

NOTE: Also compatible with Louvolite 45mm tube.