

## OVERVIEW: SL20 SKYLINE &amp; G200 GALAXY CHAIN CONTROL SYSTEM

## SYSTEM INDEX

The Skyline system is the flagship of the Rollease product line. The heavier duty Skyline Medium Chain Controls, SL20 Lite & G200 Galaxy offers sleek rounded chain guard profiles which are ideal for both residential & commercial applications whilst featuring Velvetrol Technology and our limited lifetime warranty. The premium Skyline G200 Galaxy Clutch builds on the Rollease flagship line by featuring an advanced geared patented technology. The planetary gearing mechanism enhances the lifting capacity by up to three times all whilst retaining minimal user effort.

## AESTHETICAL FEATURES

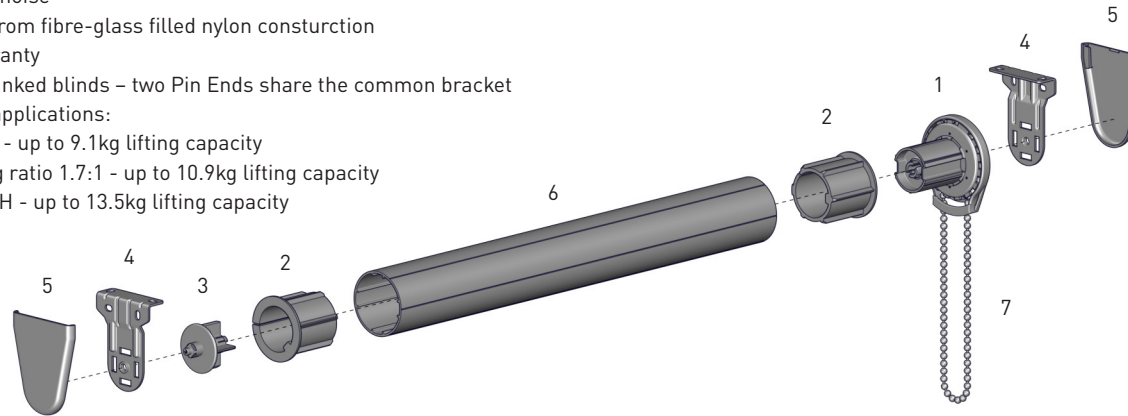
- Sleek, rounded chain guard design
- Reduced light gaps
- Colour coded bracket covers

## ASSEMBLY / PRODUCTION FEATURES

- Greater flexibility in installation with spring loaded pin end
- Universal brackets
- Hooked clutches for a secure application
- Easy chain attachment

## FUNCTIONAL BENEFITS

- Smooth operation
- Patented Velvetrol internal spring arrangement
- Guarded chain cover for minimal noise
- Long lasting durability achieved from fibre-glass filled nylon construction
- Backed by Limited Lifetime Warranty
- Intermediate bracket to achieve linked blinds – two Pin Ends share the common bracket
- 3 clutch options to suit different applications:
  - SL20 Skyline 38mm (1-1/2") - up to 9.1kg lifting capacity
  - G200 38mm (1-1/2") Gearing ratio 1.7:1 - up to 10.9kg lifting capacity
  - Spring Assist Clutch LH & RH - up to 13.5kg lifting capacity

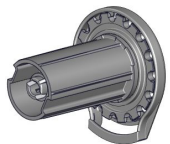


1	Rollease Clutch - 38mm SL20H53xx SL20 RGALHxx G200 Galaxy RGALSAH45#xx G200 Galaxy Spring Assist
2	Skyline Adaptor - 50mm RA2xx
3	Skyline Pin End SLPEV653xx - 38mm Standard SLPEHD53xx - 38mm Heavy Duty
4	Skyline Bracket SLB6#0xx - Standard 38p/50p
5	Skyline Bracket Cover SLBC##xx - Standard 38p/50p
6	Aluminium Tube - 38/50mm RTEA#T16
7	Rollease Chain - 50-51BPF RB545Mxx - Metal RBC6MMxx - Plastic

# = size  
xx = colour / finish

## PRODUCT OPTIONS

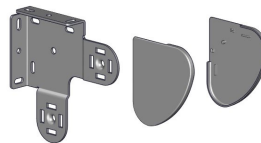
## SL20 CLUTCH | 38MM (1 1/2")



## SPRING ASSIST CLUTCH G200 GALAXY | 38MM (1 1/2")



## DOUBLE BRACKET &amp; COVER | 38/48MM



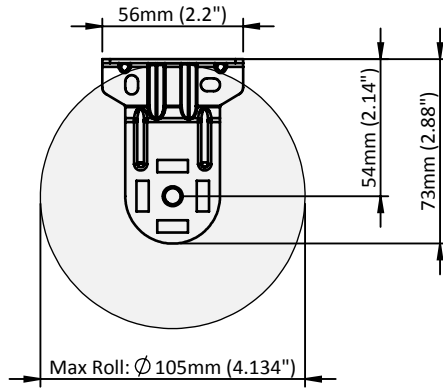
## COLOUR RANGE



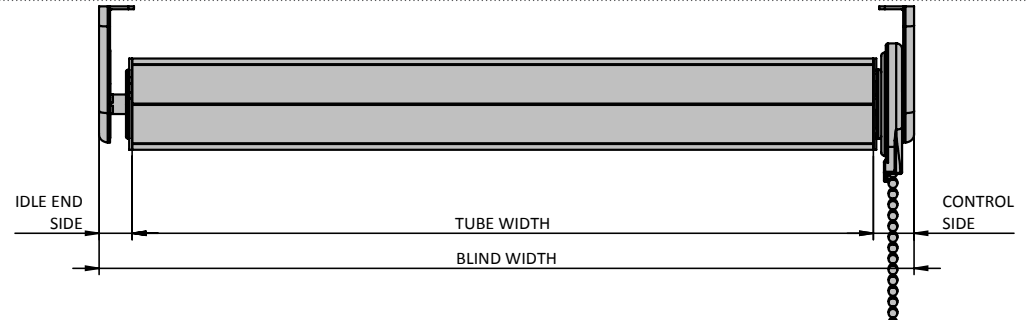
White (W) Grey (G) Black (BK)

**SPECIFICATIONS: SL20 SKYLINE & G200 GALAXY CHAIN CONTROL SYSTEM**

**MAX ROLL**



**DEDUCTION**

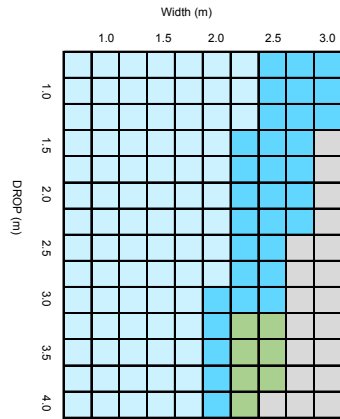


	IDLE END SIDE	CONTROL SIDE		OVERALL DEDUCTION	
		SL20	G200	SL20	G200
Standard Bracket - with covers	12mm [0.472"]	17mm [0.669"]	20mm [0.787"]	29mm [1.142"]	32mm [1.160"]
Standard Bracket - with out covers	10mm [0.394"]	16mm [0.630"]	19mm [0.748"]	26mm [1.024"]	29mm [1.142"]
Narrow Bracket - with covers	12mm [0.472"]	18mm [0.709"]	21mm [0.827"]	30mm [1.181"]	33mm [1.300"]
Narrow Bracket - with out covers	11mm [0.433"]	16mm [0.630"]	19mm [0.748"]	27mm [1.063"]	30mm [1.181"]

ADAPTER NOTE: Add additional 1.5mm [0.063"] to the overall deduction per adapter (eg. 29mm + 1.5mm + 1.5mm = 32mm)

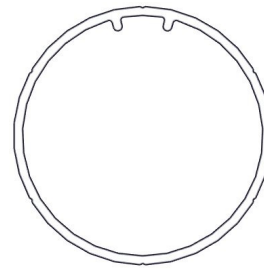
**SYSTEM CAPACITY**

Based on Recommended User Effort



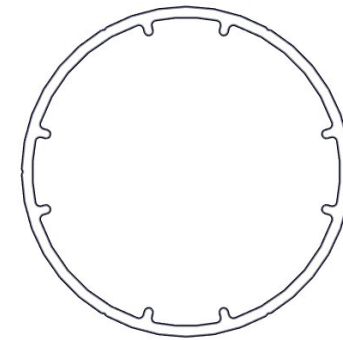
CONTROL	TUBE
SL20 Clutch / G200	RTEA4, RTEA5
	RTEA5
G200	RTEA5
OUTSIDE SPECIFICATIONS	

Chart based on 38mm Rollease Tube, 420gsm fabric weight, 0.6mm fabric thickness & D30 Bottom Rail



38mm (1-1/2") ROLLEASE Tube

CODE: RTEA4T16  
 O.D.: 38.6mm [1.520"]  
 Length: 4.87m [16']  
 Weight: 0.43kg/m [lbs]



50mm (2.0") ROLLEASE Tube

CODE: RTEA5T16  
 O.D.: 50.8mm [2.0"]  
 Length: 5.8m [19']  
 Weight: 0.74kg/m [1.63lbs]