



YUKI SYSTEM

ASSEMBLY MANUAL

v1.0 | February 2024



CONTENTS

SECTION 1 WARRANTY	3
SECTION 2 GUIDELINES	4
SECTION 3 SYSTEM DETAILS	5
SECTION 4 SPECIFICATIONS	6
SECTION 5 AWNING ASSEMBLY	8
SECTION 6 ADJUSTING THE AWNING	14
SECTION 7 REMOVING AND PACKING THE AWNING	15

DISCLAIMER

INTRODUCTION

This Assembly manual has been produced by Rollease Acmeda to supply the necessary information for safe and correct installation of the awning.

DISCLAIMER

Rollease Acmeda has used reasonable care in preparing the information included in this document, but makes no representations or warranties as to the completeness or accuracy of the information. Information is supplied upon the condition that the persons receiving the information will make their own determination as to its suitability for their purposes prior to use. Rollease Acmeda assumes no liability whatsoever for any damages incurred by you resulting from errors in or omissions from the information included herein. Rollease Acmeda reserves the right to make changes without further notice to any products to improve reliability, function or design.

COPYRIGHT

COPYRIGHT © ROLLEASE ACMEDA

All rights are reserved. No part of this document may be reproduced or utilised in any means, by any means, electronic or mechanical including photocopying, recordings, or by any information storage or retrieval system, without the express permission from Rollease Acmeda.

WARRANTY

Rollease Acmeda provide a 5 year hardware warranty against defects to the original purchaser [the fabricator/manufacturer].

The hardware warranty is not to be transferred to the end consumer.

The hardware warranty is limited to the repair or resupply of defective hardware components to the fabricator/manufacturer only.

The hardware warranty is applicable to normal use.

The hardware warranty when applied to external systems assumes the blinds are not used in strong winds/storms and not left down indefinitely.

The hardware warranty will not apply where the defect arises due to incorrect assembly and installation.

The hardware warranty is not applicable for coastal applications unless specified.

Retailers are obliged to supply consumers with their own warranty, if required, at the point of purchase.



SAFETY OPERATOR GUIDELINES

- Wear appropriate protective equipment required by safety regulations in the workplace and surrounding environment. (protective helmet, gloves, etc.)
- It is forbidden to use the awning to support yourself: risk of serious personal injury and of damage to the awning itself.
- Some awning components are constantly subject to strong pressure (arms) and, if the instructions in this manual are not carefully followed, these components may cause serious harm to persons, animals and things.
- NEVER reuse the provided safety arm band after removing it.

SAFETY PRODUCT GUIDELINES

- This manual is an integral part of the product. Before assembly, carefully read all the instructions given in this manual.
- Do not lay objects on the awning.

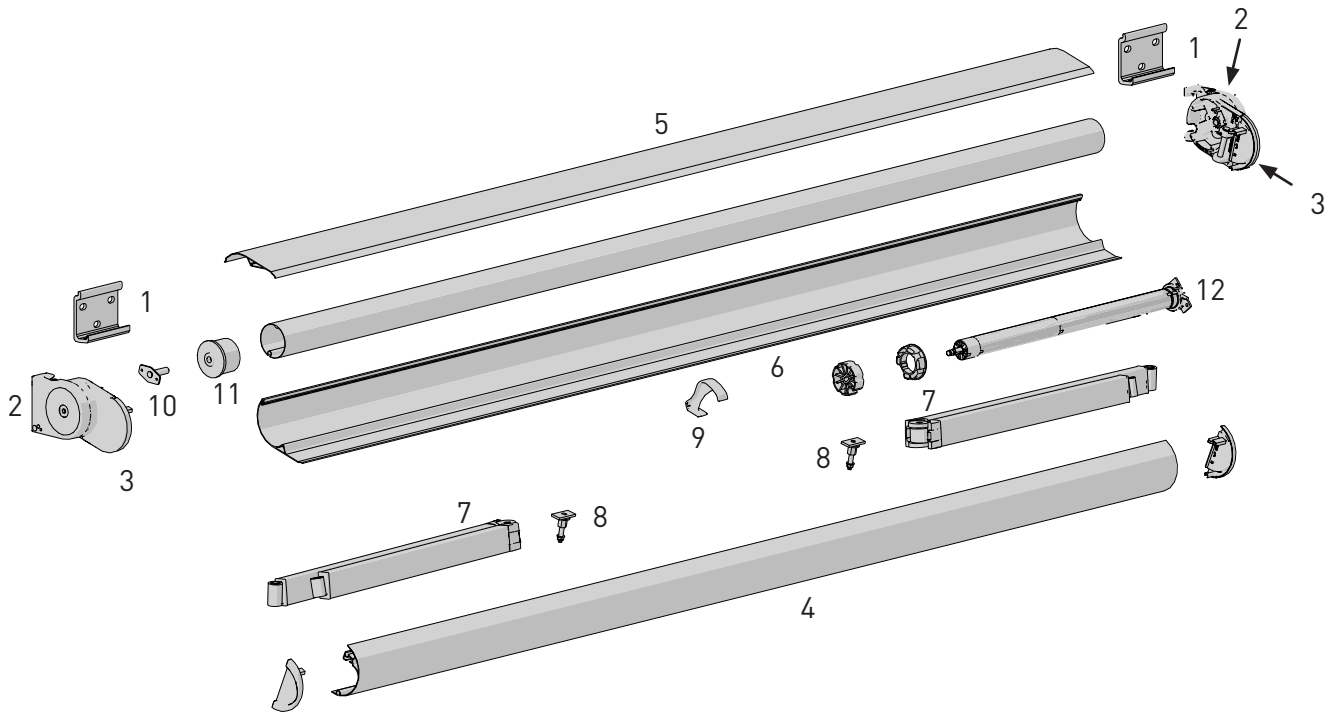
WORKING ENVIRONMENT

- Awnings should be assembled in good natural and/or artificial lighting.

NECESSARY EQUIPMENT

To ensure the correct assembly of the entire system and for optimum operation of the finished product, it is necessary to be in possession of the following:

- Awning assembly frame for testing & adjustment.
- Complete set of tools.



YUKI SYSTEM INDEX:

1. Wall Brackets (x2)
2. Side Support (x2)
3. Lever (x2)
4. Terminal Bar (Front)
5. Cover (Top)
6. Cassette (Bottom)
7. Arms (x2)
8. Terminal Bar Connectors (x2)
9. Conveyor
10. Plate with Pin
11. Cap with Hole
12. Motor with Crown and Drive

SECTION 4 | SPECIFICATIONS

YUKI BOM & DEDUCTIONS

	PART NUMBER	DESCRIPTION	U.O.M	QTY	CUT LENGTH	
					CRANK	MOTOR
HARDWARE	AW10-0101-xxx000	YUKI - End Plates	Kit	1		
	AW10-0201-xxx500	YUKI - Cassette Kit	mm	1	W - 134 mm	
	AW10-0501-001000	YUKI - Centre Conveyor	Each	1		
	AW92-0901-000LLL	78mm Awning Steel Tube (4.8m, 7m Lengths)	mm	1	W - 140 mm	W - 134 mm ^
	RE01-0379-000600	78mm Aluminium HD Tube 6m Length			W - 146mm	W - 140 mm ^
	AW91-1401-338000	Idler Housing - 78mm Tube	Each	1		
	AW92-0701-xxx000	Front Terminal Bar End Covers	Each	1		
	AW91-1201-025000	Plate with Pin	Each	1		
AW92-0901-010005	Screw kit for Plate with Pin (M6x30 w/ Nuts)	Kit	1			
MOUNTING	AW92-2101-033xxx	Fascia Mounting Bracket - Low (10°, 22°, 33°)	Each	2		
ARMS	AW07-0501-006000	Arm/Terminal Bar Connectors - Fusion	Pair	1		
	AW07-0301-xxx200	Folding Arm Fusion - 2.0m	Pair	1		
	AW07-0301-xxx250	Folding Arm Fusion - 2.5m				
	AW07-0301-xxx300	Folding Arm Fusion - 3.0m				
CRANK CONTROL	AW92-0901-xxx000	Crank Gear 11:1	Each	1		
	AW91-1101-338000	Crank Adaptor for 78mm Tube	Each	1		
	AW91-1001-xxx180	Crank Arm 1.8m	Each	1		
	AW92-0901-010007	Gear Screw Kit (SHCS M6 x 45 w/ Nuts)	Kit	1		
AUTOMATE CONTROLS	MT01-1145-069013	AUTOMATE AX30 ARC Motor [Ø45/240V/15rpm] & Crown & Drive Wheel for 78mm Tube	Kit	1		
	AW92-0901-010004	Motor Screw Kit (FHCS M6 x 20 w/ Nuts) <i>(Only for Square Shaft Adaptor Plate)</i>	Kit	1		
	RB56-0766-014050	Universal Zamak Adaptor with Lock Ring Threaded <i>(Optional)</i>	Kit	1		
	NOT SUPPLIED	C/Sunk M6 x 16 <i>Only for Zamak Adaptor</i>	Each	2		
	SEE PRICE LIST	AUTOMATE Remote Control	Each	1		
	MT02-0301-072001	AUTOMATE ARC Solar Sun & Wind Sensor	Each	1		
	MT02-0301-072003	AUTOMATE ARC 240V Sun & Wind Sensor	Each	1		
	MT02-0301-xxx002	AUTOMATE Motion Sensor	Each	1		
FABRIC	NOT SUPPLIED	Fabric Cut Width	mm	1	W - 170 mm	W -164 mm
		Fabric Drop			Projection + 120 mm	
	SB91-0016-050250	6mm Solid Round PVC Spline	mm	1	W - 170 mm	W -164 mm
	SB91-0017-050250	7mm Solid Round PVC Spline	mm	1		

NOTE: ^ When using the Zamak Adaptor, subtract 5mm from deduction.
e.g. Width - 134 mm becomes Width - 129 mm,

TABLE OF MINIMUM DIMENSIONS

Projection (cm)	Minimum Width (cm)
209	222
259	272
309	322

NOTE: Add 20cm to minimum width when attaching a Motion Sensor.

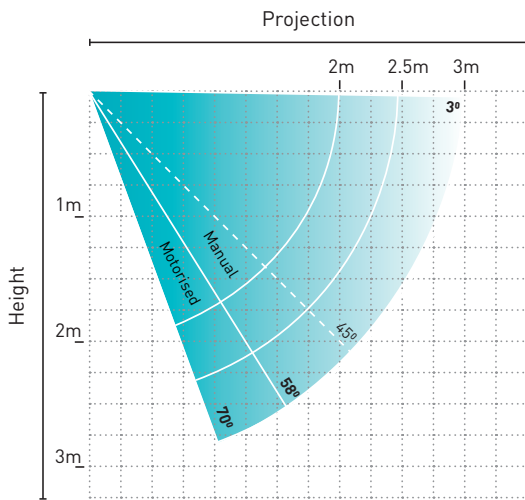
SYSTEM WEIGHT CHART (KG)

PROJECTION (cm)	WIDTH (cm)			
	200	300	400	500
209	31	39	47	55
259	32	40	49	56
309	33	41	51	58

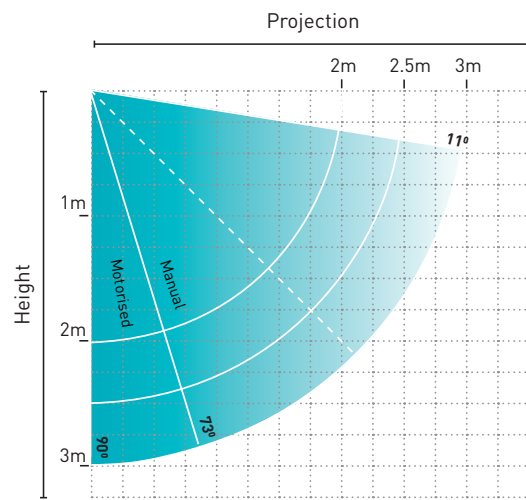
FABRIC EXCLUDED

ARM LENGTH & INCLINATION

WALL MOUNTING



ROOF MOUNTING

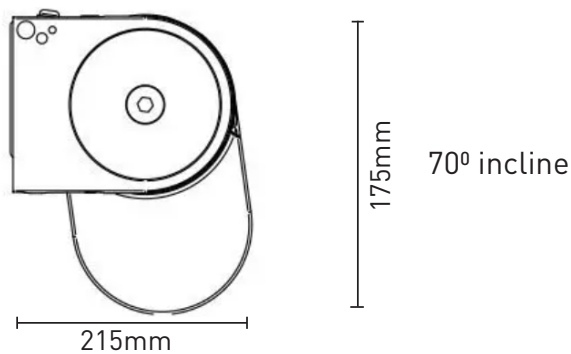
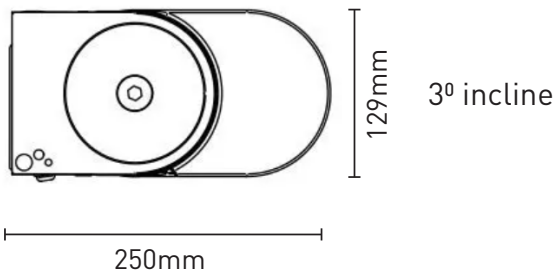


MAXIMUM AWNING DIMENSIONS

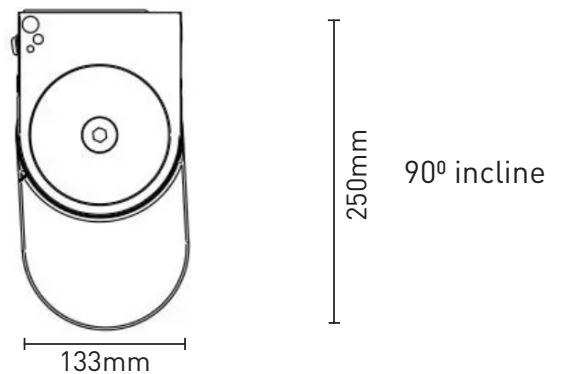
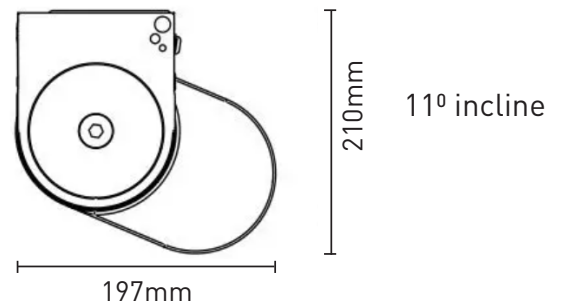
Width: 5m
Projection: 3.09m

AWNING DIMENSIONS WITH ARMS FOLDED

WALL MOUNTING



ROOF MOUNTING

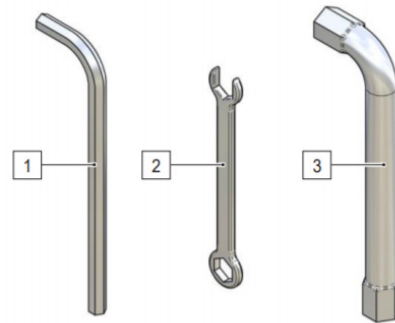


Before starting, extrusion lengths must be cut to size as per BOM deductions.

Please read manual instructions carefully before assembly.

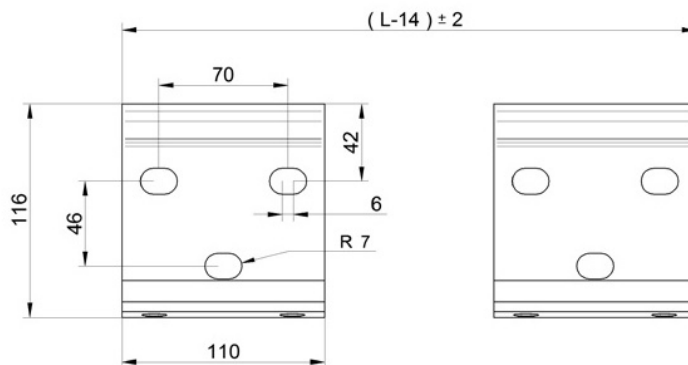
The following tools must be used to assemble the YUKI awning:

1. Allen keys: 3, 4, 5, 6, 10
2. Combination spanner: 10
3. Box spanner: 13



STEP 1 - BRACKET MOUNTING DIMENSION

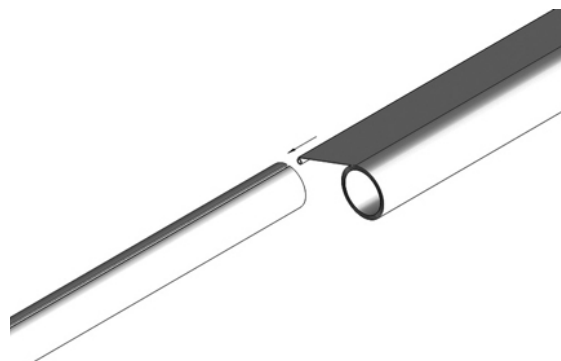
Define the distance of the wall/ceiling brackets and position them on the awning assembly frame. This step is only required if the awning is being tested once assembled.



STEP 2 - ASSEMBLE FABRIC ONTO TUBE

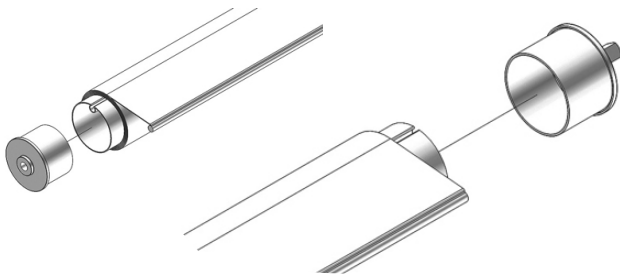
Assemble the fabric to the roller tube and roll it up completely as an over roll.

Secure the fabric to the tube with a screw between the spline and the tube to stop the fabric from sliding.



STEP 3 - ASSEMBLE CONTROL END

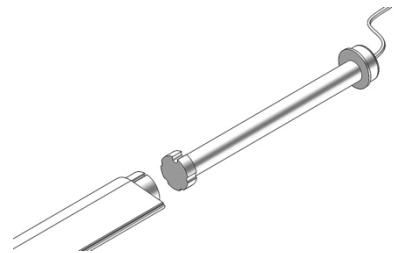
Insert the cap with hole on the opposite side of the control.



For gear / crank operation:
Insert Gear Drive End Cap to opposite end of idler.

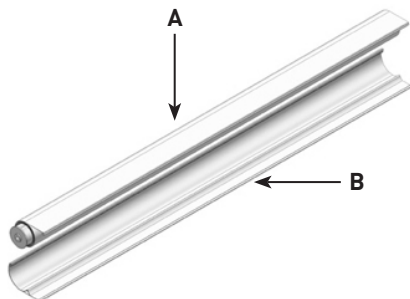
- Use a mallet to lightly tap drive in evenly.

For Motor operation:
Insert the motor to opposite end of idler.
IMPORTANT: Follow instructions provided in motor manual.



STEP 4 - ASSEMBLY ROLLER TO BOTTOM EXTRUSION

Insert the roller tube (A) into the bottom profile (B) as an over roll.

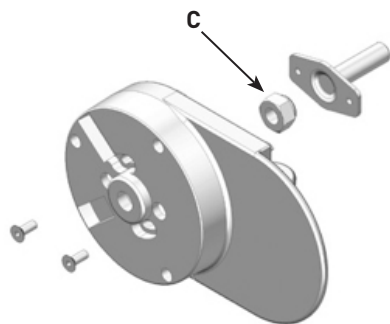


IMPORTANT

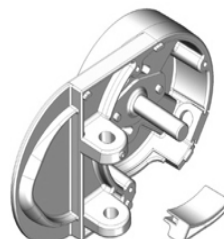
The roller tube must be inserted with the rolling direction facing upwards.

STEP 5 - PREPARE THE END BRACKETS

Insert the nut (C) in the centre of the bracket and assemble the pin adaptor. With 2x FHCS M6x20 w/ nuts.

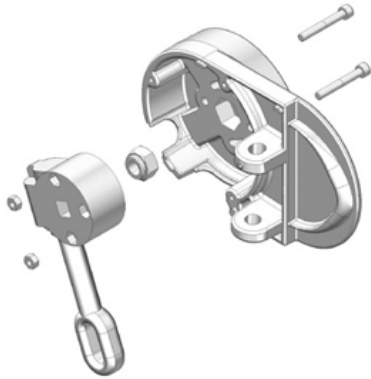


Insert the caps on the end plates



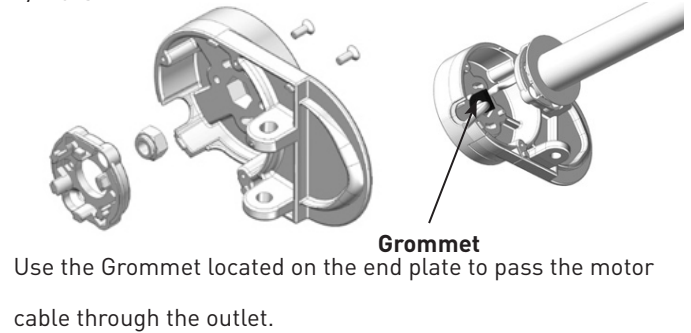
STEP 5A - GEAR / CRANK ATTACHMENT

For Gear / Crank operation:
 Insert the nut M14 into the centre of the bracket.
 Assemble the gear / crank with screws (SHCS M6X45) fitted in the slots.

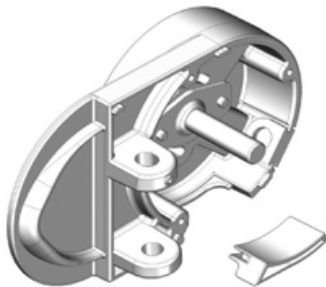


STEP 5B - ATTACHING MOTOR PLATE

For motor operation:
 Insert the nut M14 into the centre of the bracket.
 Assemble the motor plate.
 Zamak Adaptor requires 2x C/Sunk M6x16.
 Square shaft adaptor plate requires 2x C/Sunk M6x20 w/ nuts.

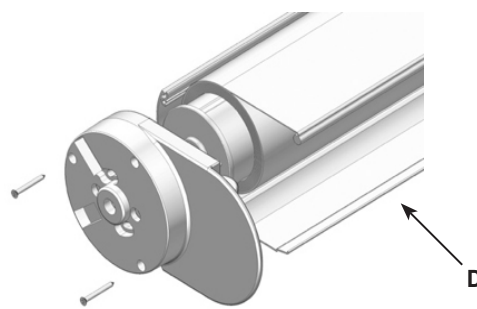


STEP 5C - INSERT THE CAPS ON THE END PLATE



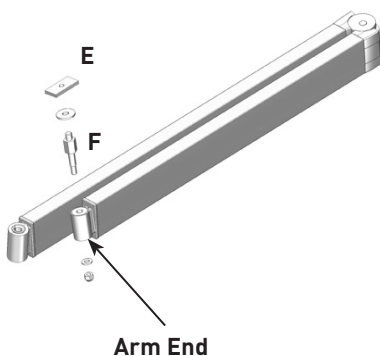
STEP 6 - ATTACH END BRACKETS

Fix the brackets to the bottom profile (D), ensuring that the corresponding holes are aligned.
 Do not overtighten the screws yet.



STEP 7 - PREPARE TERMINAL BAR CONNECTING KIT

Assemble the plate (E) onto the terminal bar connecting pin (F) and fit the latter onto the arm end.



IMPORTANT

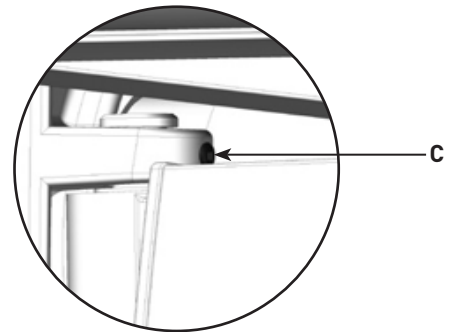
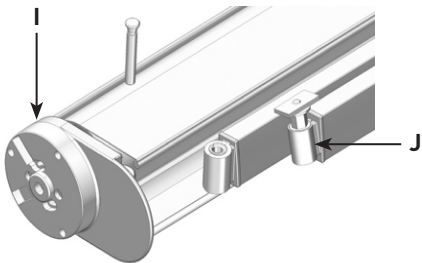
The arm is provided with a safety band that blocks the tightening mechanism. Do not remove this band until the awning has been completely assembled. Failure to respect the correct assembly procedure may cause serious harm to people or objects in the vicinity. Use straps to assist in keeping arms secure.

NOTE

Do NOT over tighten the terminal bar connector in the arm socket.

STEP 8 - ATTACH ARMS

Assemble the arms (J) on the respective brackets (I).



IMPORTANT

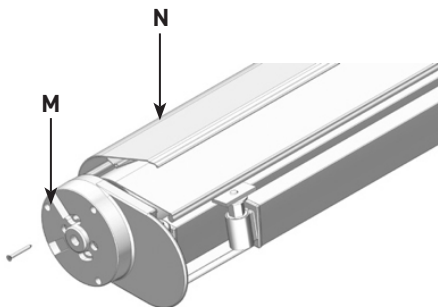
The arm must be fitted **CLOSED**. Do not remove the safety strap provided; the arm is always under tension, if it were opened without control it could cause serious harm to people or objects in the vicinity.

NOTE

Do **NOT** over tighten the small grub screw - this is used to adjust the arm position.

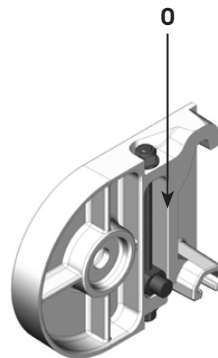
STEP 9 - ATTACH COVER

Fit the cover profile (N) onto the bottom profile (M), securing it with the screws. Now all screws can be tightened completely.



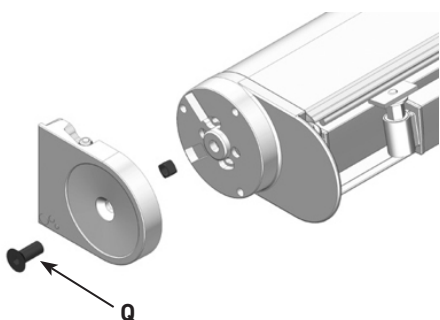
STEP 10 - PREPARE END CAP COVER

Set the regulating cylinder at minimum (O).



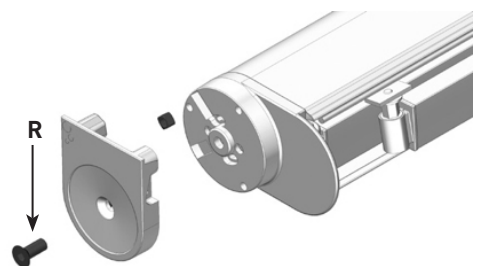
STEP 11A - ATTACH FOR WALL MOUNT

For Wall Mounted Awnings;
Fix the supports onto the levers by inserting the screw (Q) in the hole provided using Allen key 10mm.



STEP 11B - ATTACH FOR ROOF MOUNT

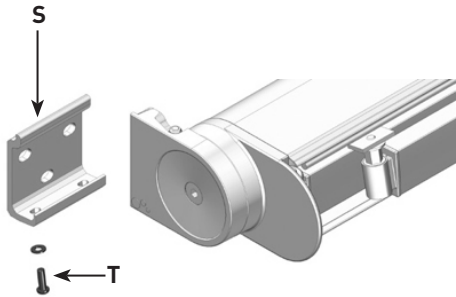
For Roof Mounted Awnings;
Mount the supports vertically.
The square nut is inserted in the slot from the top (R).



STEP 12 - INSTALL SYSTEM

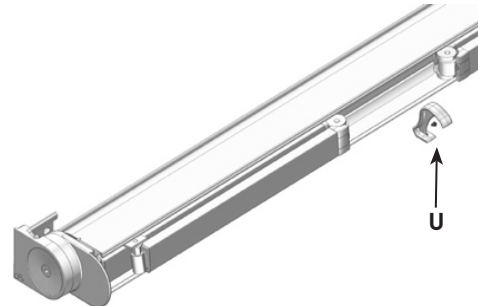
Install the awning onto the brackets (S) fixed to the frame for testing & adjustment.

Secure the awning with the screws provided (T) using Allen key 5mm.



STEP 13 - ATTACH CONVEYOR SUPPORT

For awning widths larger than 4m, fix the conveyor to the centre of the awning (U).

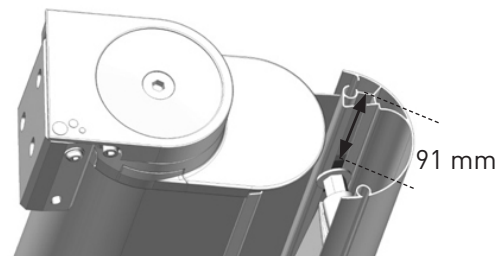


STEP 14 - ATTACH TERMINAL BAR

Assemble the terminal bar inserting the fabric into the relevant ogive. Sliding the terminal bar check that the 2 plates of the terminal bar connectors are properly positioned.

STEP 15 - SECURE TERMINAL BAR CONNECTORS

To ensure correct operation of the YUKI awning, the terminal bar connector must be located correctly. Check the distance of terminal bar connector from the edge of the terminal bar is 91 mm.

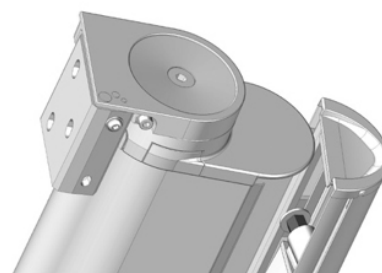
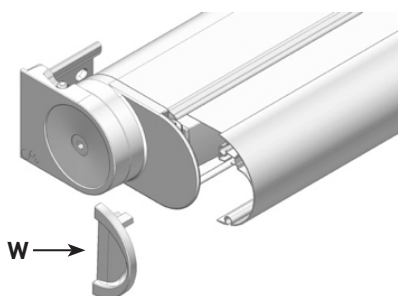


STEP 17 - ATTACH TERMINAL BAR END CAPS

Insert the terminal bar caps (W). Check that the terminal bar is centered with the cassette. Close the awning.

STEP 18 - CHECK CLOSING OF AWNING

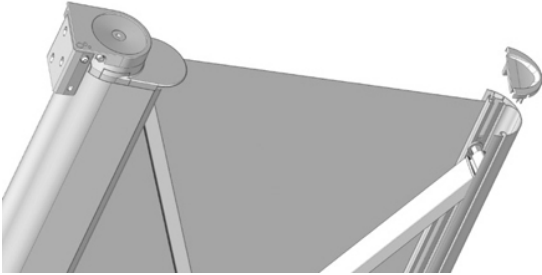
Check that the awning closes perfectly with the arms fitting inside the cassette properly.



STEP 16 - TEST AWNING

After having checked the tightness of the front terminal bar connecting screws, remove the safety bands from the arms and open the awning. It is recommended to pin the fabric to the terminal bar after adjustments have been made.

- Complete 2-3 test cycles of opening/closing the awning.
- Adjust any components that prevent the correct and unimpeded opening and closing movement of the awning.



SECTION 6 | ADJUSTING THE AWNING

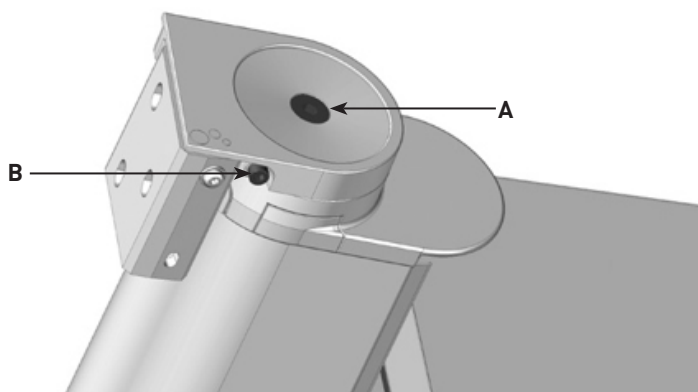
To adjust the awning inclination:

- Slacken the side screw (A) using Allen wrench 10.
- To increase the inclination slacken the socket-head screw (B) Allen wrench 6.
- To decrease the inclination tighten the socket-head screw, raising the terminal bar.

Support the weight of the Terminal Bar & Arms when adjusting the inclination.

Check that the terminal bar is perfectly horizontal.

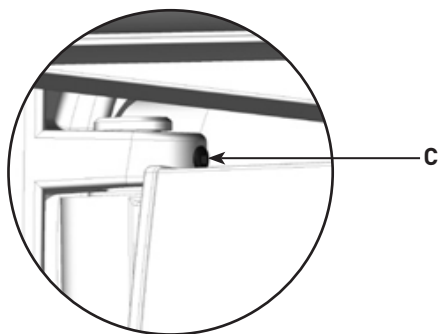
After adjusting, firmly tighten the side screw.



With the awning almost closed, check that the arms are parallel to the cassette.

If they are not parallel, tighten or slacken the dowel (C) in the lever using Allen wrench 3.

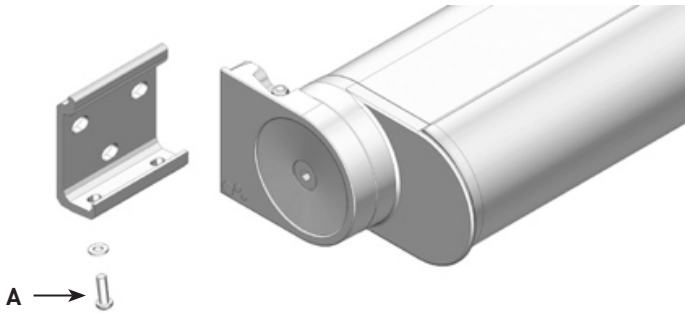
Always support the weight of the arms and terminal bar when adjusting the arms.



SECTION 7 | REMOVING AND PACKING THE AWNING

- The awning must be taken down by qualified personnel.
- The awning must be closed when taken down.

Unscrew the screws under the brackets (A) to dismount the awning.



PACKING

The awning must be packed complete with all its components except the brackets which are fixed to the wall. These must be packed separately.

IMPORTANT

- After having taken down the awning, to protect it against damage to vital parts, the awning must be wrapped in good packaging.
- During packing it is necessary to pay particular attention to the delicate parts of the awning (for example, the heads); these must be well protected with good packaging.