

BRACKET OPTIONS

TUBE OPTIONS

SINGLE

DOUBLE

TUBE

FABRIC OPTIONS

CONTROL OPTIONS

CLUTCH

SPRING

MOTOR

HEM BAR

SKYLINE SYSTEM UPGRADES

WIRE GUIDE

EASY-LINK

MOUNTING RAIL

CASSETTE

FASCIA

P95 SEMI CASSETTE

CF90

POCKET

# CONTENTS

## CONTROL OPTIONS

CHAIN

- 03** SKYLINE CLUTCH
- Hooked clutches and spring-loaded pin ends allow for fast and forgiving installation.
- SL15 & SL20 SPRING ASSIST BOOSTER
- Spring Assist Booster reduces shade lifting effort by up to 40%.
  - Child safe accessories available.

MOTOR

- 07** MOTORS | ARC PRO LI-ION
- 08** MOTORS | CONTROLLERS
- Smart Home Automation and voice control available with the Pulse PRO App.
  - Multiple power-source configurations suitable for Commercial or Residential use.
  - Wide range of Remotes & Accessories available.

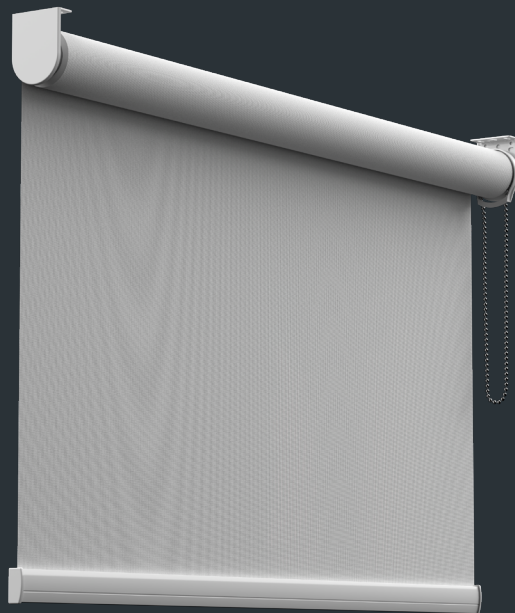
## HARDWARE

- 11** ALUMINUM TUBES
- Extrusions available for all shade sizes.

- 12** BRACKETS | SINGLE
- Available in multiple styles.
  - Available for multiple mounting solutions.

- 13** BRACKETS | DOUBLE
- Dual shades for day/night applications.
  - Available for multiple mounting solutions.

- 14** HEM BAR
- Multiple sizes and styles to suit all shade solutions.
  - Multiple add-ons available to customize installation.



# SKYLINE CLUTCH

## FEATURES & BENEFITS

- Universal brackets available for single and dual shades with multiple projections.
- Hooked clutches and spring-loaded pin ends allow for fast and forgiving installation.
- Fiberglass-filled nylon construction provides long lasting durability.
- Spring Assist Booster reduces the pull force required to use heavy shades.
- Patented geared clutches provide a smooth operation.
- Exterior versions of SL20 and SL30.

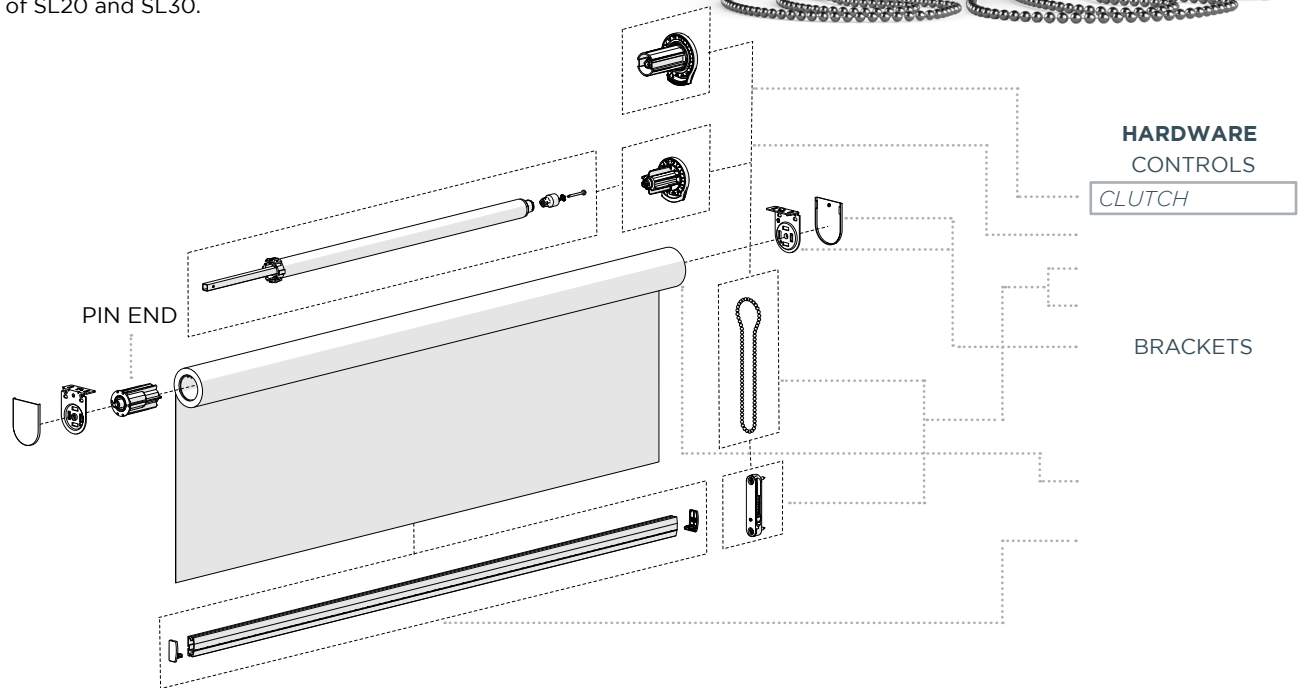


**COLOR RANGE**

- black
- white
- zinc/gray
- vanilla
- satin nickel
- antique bronze

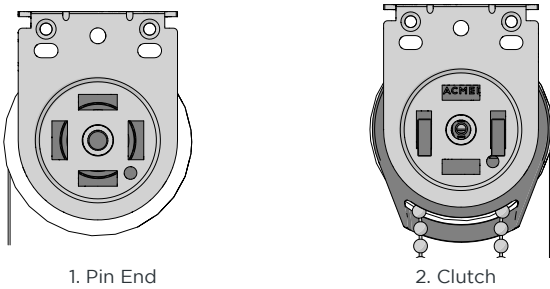
**WEBPAGE LINK**

**HARDWARE LIMITED LIFETIME WARRANTY**

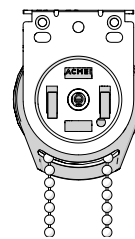


## KEY SYSTEM FEATURES

### UNIVERSAL BRACKETS

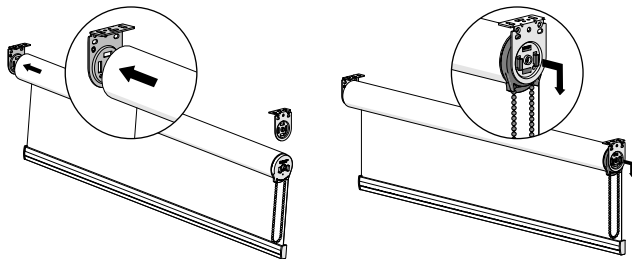


### CHAIN GUARD



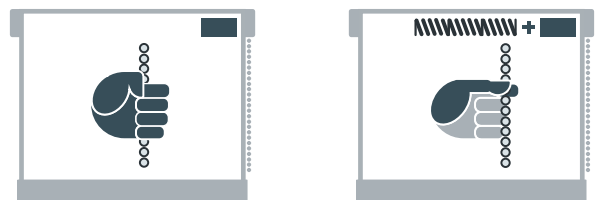
Prevents bead chain from getting tangled.

### QUICK AND EASY INSTALLATION



Simply push pin end into bracket. Then, install the clutch.

### SPRING ASSIST BOOSTER



Reduces shade lifting effort by 40%.

WIRE GUIDE

EASY-LINK

MOUNTING RAIL

CASSETTE

FASCIA

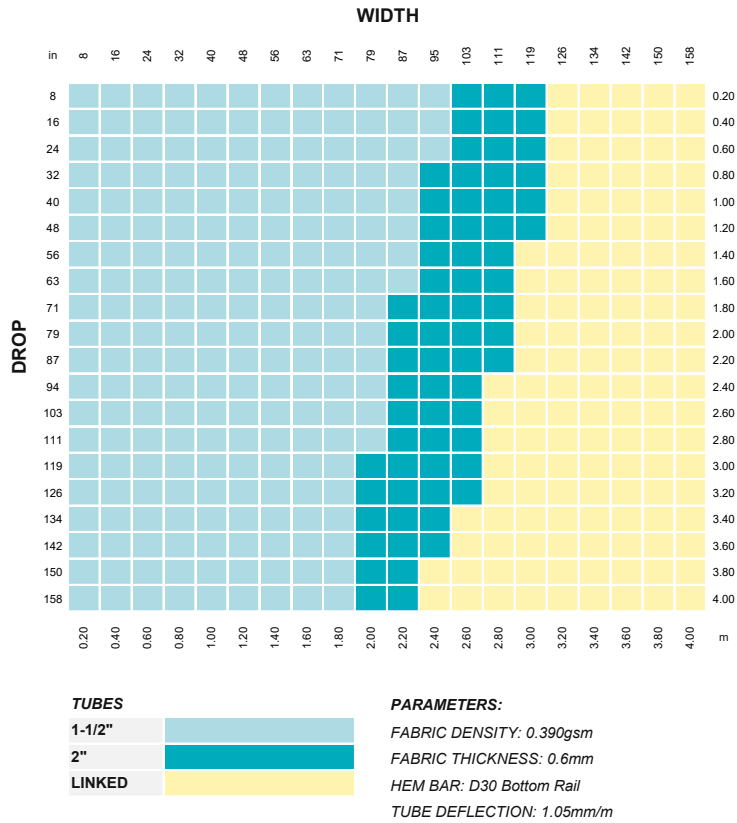
P95 SEMI CASSETTE

CF90

POCKET

# PRODUCT SPECIFICATIONS

## TUBE CAPACITY



## TECHNICAL DATA

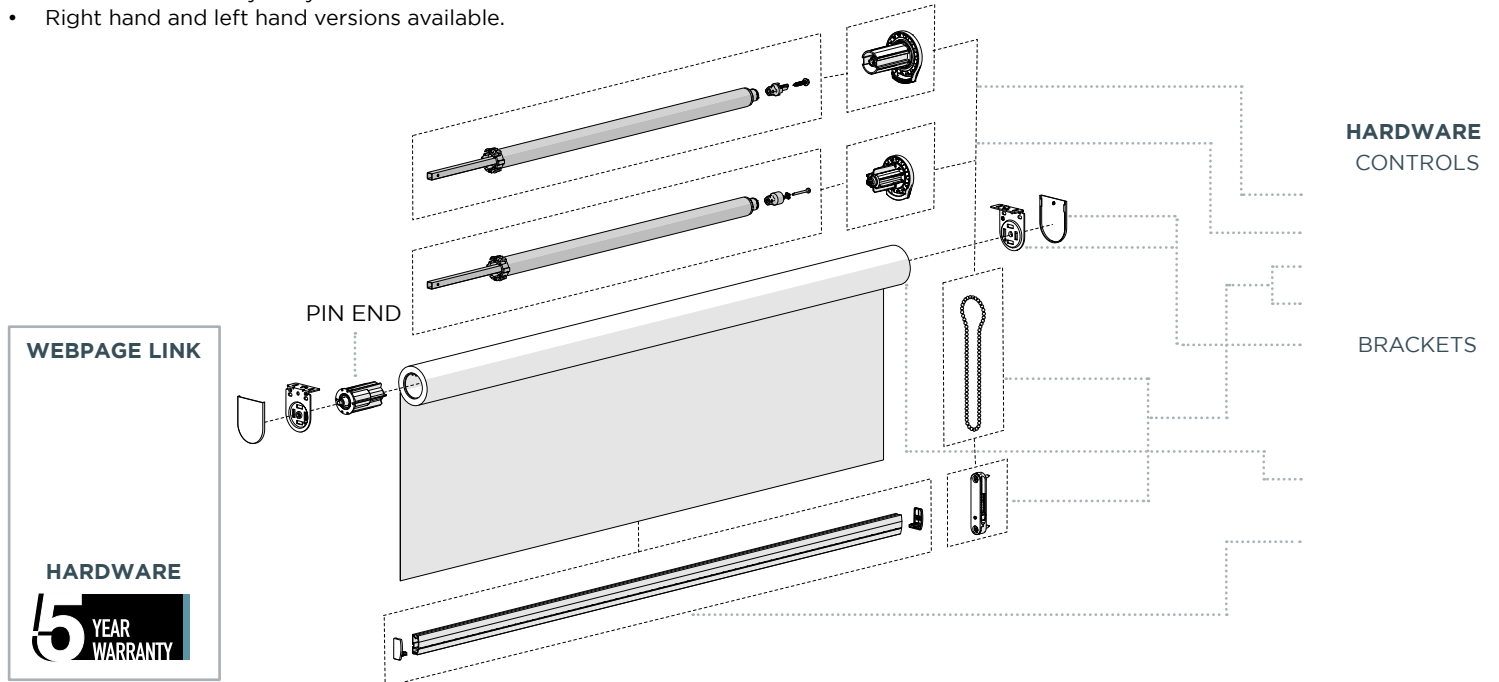
| MAX HOLD CAPACITY |      |      |       |    |                    |
|-------------------|------|------|-------|----|--------------------|
| CLUTCH            | LOAD |      | TUBE  |    | CORD or BEAD CHAIN |
|                   | lbs  | kg   | inch  | mm |                    |
| SL10              | 11   | 5.0  | 1-1/8 | 28 | Both               |
| SL15              | 16.5 | 7.5  |       |    |                    |
| SL15              | 12   | 5.5  | 1-1/2 | 38 |                    |
| SL20              | 20   | 9.1  |       |    |                    |
| SL20              | 15   | 6.8  | 2     | 50 | Bead               |
| SL30              | 22   | 10   |       |    |                    |
| SL30              | 18   | 8.2  | 2-1/2 | 63 |                    |
| SL30              | 14.4 | 6.5  | 3-1/4 | 83 |                    |
| G200              | 24   | 10.9 | 1-1/2 | 38 |                    |
| G200              | 18   | 8.2  | 2     | 50 |                    |
| G200              | 14.4 | 6.5  | 2-1/2 | 63 |                    |
| G400              | 40   | 18.2 | 2     | 50 |                    |
| G400              | 32   | 14.5 | 2-1/2 | 63 |                    |
| G400              | 25   | 11.4 | 3-1/4 | 83 |                    |

Please note that the loads are max loads for clutches. Max loads will not produce comfortable pull forces.

# SL15 & SL20 SPRING ASSIST BOOSTER

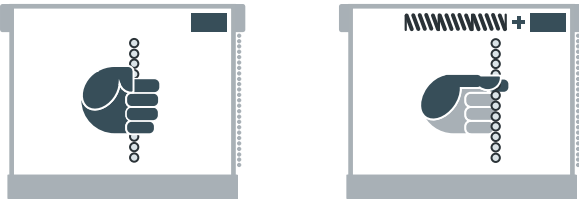
## FEATURES & BENEFITS

- Compatible with SL15/SL20 clutches.
- Decreases shade lifting effort by 40%.
- Control larger or linked shades with minimal effort.
- Retrofit a shade on-site to achieve a lighter lifting solution.
- Standard and Heavy Duty versions available.
- Right hand and left hand versions available.



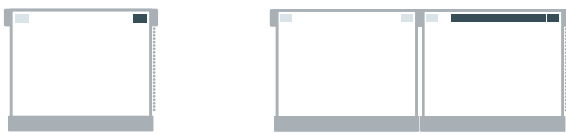
## KEY SYSTEM FEATURES

### SPRING ASSIST BOOSTER



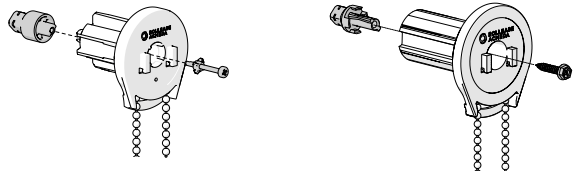
Reduces user effort by 40%.

### LARGER & LINKED POSSIBLE



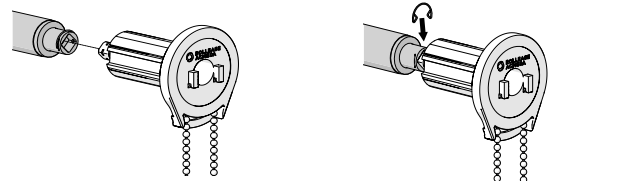
Compatible with 1-1/2" tube and adapters available for use in 2" tube.

### SL15 & SL20 BOOSTER ASSEMBLY



For SL15, align and insert the connector in the clutch and secure it with the screw and washer provided.

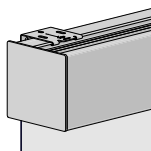
For SL20, align and insert the connector in the clutch and secure it with the screw provided.



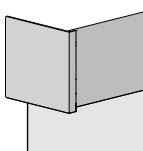
Align and insert the clutch into the booster.

Secure the clutch with seegar clip provided.

**Note:** Make sure the connector is fully inserted and tightened securely when attaching the screw and washer with a drill or screwdriver.



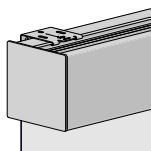
WIRE GUIDE



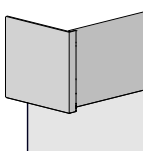
EASY-LINK



MOUNTING RAIL



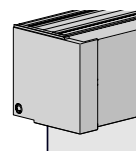
CASSETTE



FASCIA



P95 SEMI CASSETTE



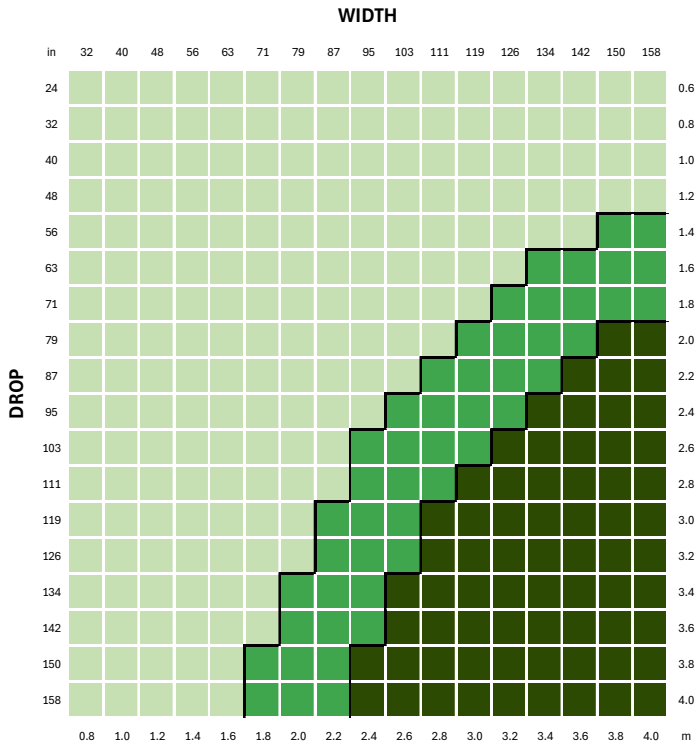
CF90



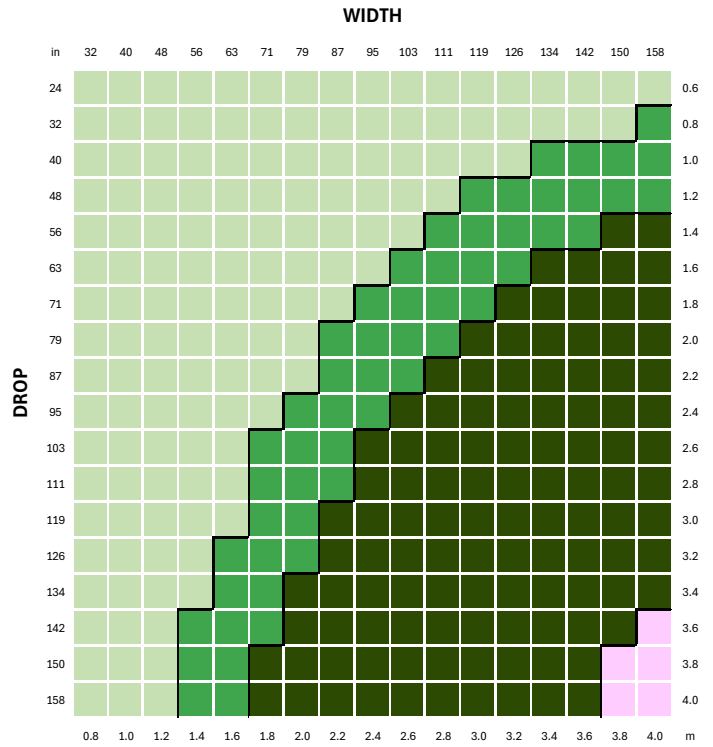
POCKET

# PRODUCT SPECIFICATIONS

## CONTROL CAPACITY | 1-1/2"



## CONTROL CAPACITY | 2"



### BOOSTER TYPE

|                        |
|------------------------|
| SL15                   |
| SL20                   |
| SL15 or SL20 + Booster |

### PARAMETERS:

FABRIC DENSITY: 390gsm  
 FABRIC THICKNESS: 0.6mm  
 WEIGHT BAR: D30 Bottom Rail

### BOOSTER TYPE

|                        |
|------------------------|
| SL15                   |
| SL20                   |
| SL15 or SL20 + Booster |
| SL20 + Booster         |

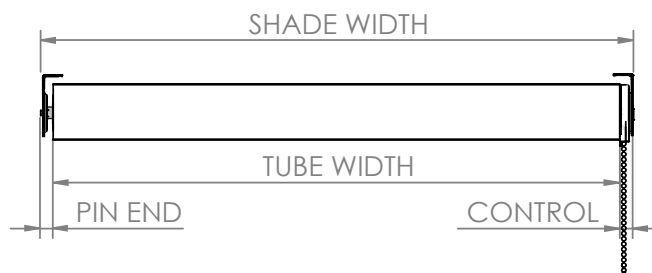
### PARAMETERS:

FABRIC DENSITY: 390gsm  
 FABRIC THICKNESS: 0.6mm  
 WEIGHT BAR: D30 Bottom Rail

## TECHNICAL DATA

| CONTROL OPTIONS          | MINIMUM SHADE WIDTH<br>(no covers) |     | TUBE DEDUCTIONS   |    |                     |    |
|--------------------------|------------------------------------|-----|-------------------|----|---------------------|----|
|                          |                                    |     | NO BRACKET COVERS |    | WITH BRACKET COVERS |    |
|                          | inch                               | mm  | inch              | mm | inch                | mm |
| SL15                     | 4.9                                | 125 | 1.1               | 29 | 1.2                 | 31 |
| SL15 + STD SPRING ASSIST | 31.8                               | 809 |                   |    |                     |    |
| SL15 + HD SPRING ASSIST  | 38.2                               | 971 |                   |    |                     |    |
| SL20                     | 5.2                                | 133 | 1.2               | 31 | 1.3                 | 33 |
| SL20 + STD SPRING ASSIST | 32                                 | 813 |                   |    |                     |    |
| SL20 + HD SPRING ASSIST  | 38.4                               | 975 |                   |    |                     |    |

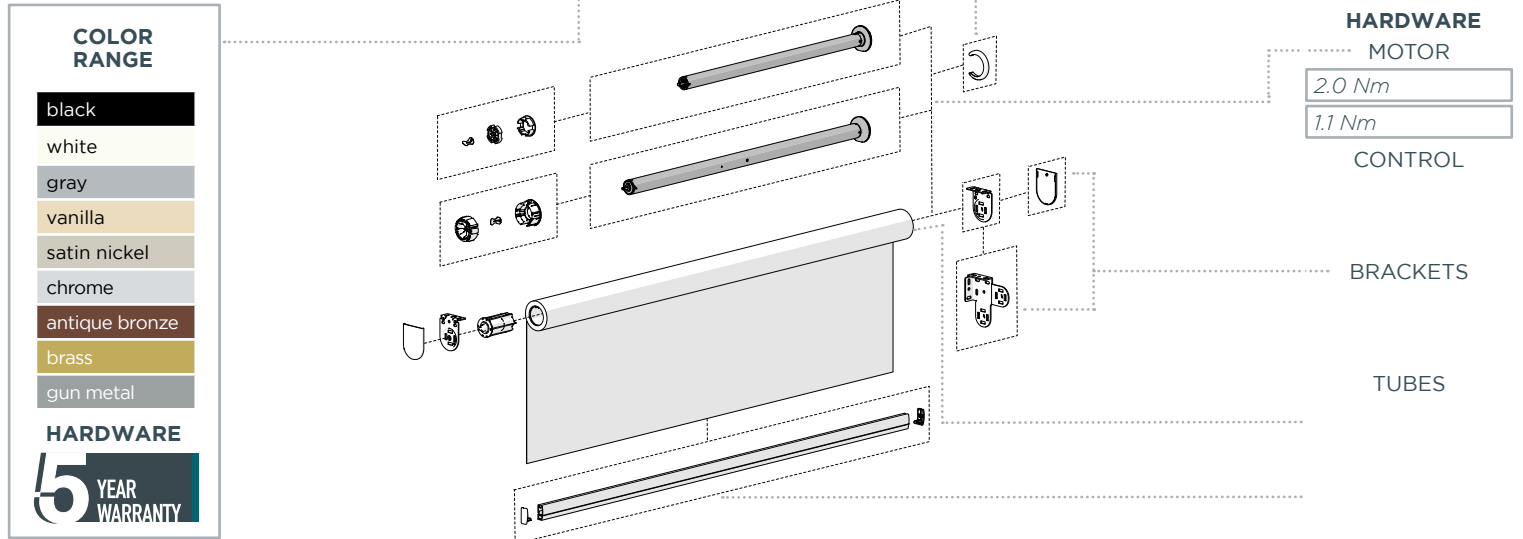
Minimum Shade Width based on 0.8" / 20mm gap between hardware in tube.



# MOTORS | ARC PRO LI-ION

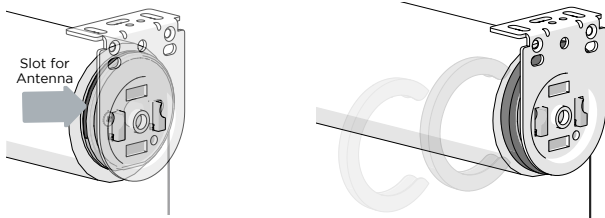
## FEATURES & BENEFITS

- Lithium Ion Battery Powered Motors
- Multiple reachable power options: Power Supply with USB C cord, Solar Panel
- Patent ZERO motor head conceals all wires by wrapping them around the head.
- Retrofit solution, turn manual blinds into motorized shades with ease, simply remove clutch, insert motor & operate.
- Soft Stop technology slows the blind prior to stopping.
- Color matching motor head cap conceals hardware.



## KEY SYSTEM FEATURES

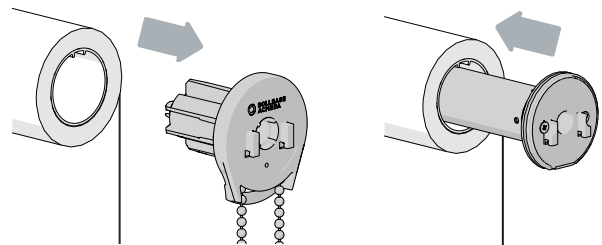
### ZERO VISIBLE WIRES



The motor head has a slot which retains the antenna.

Hide the motor head with a color matched Motor Cap.

### RETROFIT SOLUTION



Replace a chain control with a ZERO Li-ion motor without having to change any existing hardware.

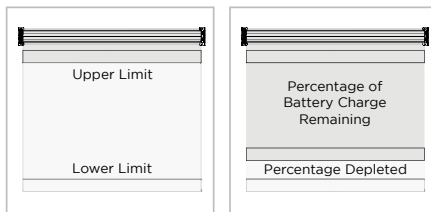
### BATTERY CHECK FUNCTION

Shade must be at Upper Limit.

Hold UP



Motor Response  
Approx. 5s

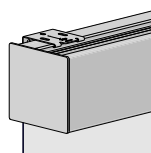


Shade must be at Upper Limit  
Hold UP for Approx. 5s

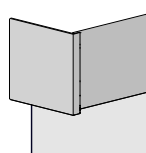
Shade moves to percentage  
of battery charge remaining

Send Shade to battery charge level

### CHARGING OPTIONS



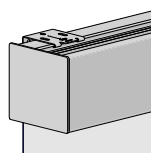
WIRE GUIDE



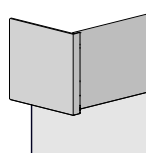
EASY-LINK



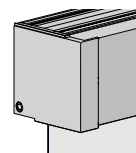
MOUNTING RAIL



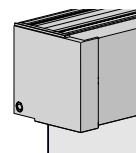
CASSETTE



FASCIA



P95 PELMET



CF90

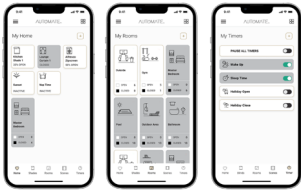


POCKET

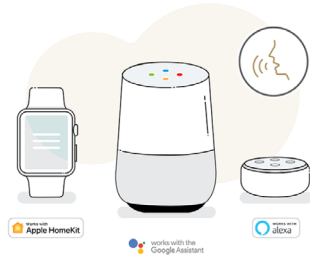
# MOTORS | CONTROLLERS

## HOME AUTOMATION FEATURES

### AUTOMATE SHADES APP

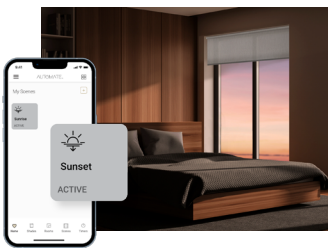


### VOICE CONTROL



Effortless control of motorized shades when at home or away. Personalize the daily routine via groups, rooms and timers.

### SUNSET/SUNRISE TIMERS



Set shades to follow the sun.

### LINQ TOOL



Connect to smart home systems.

## HOME AUTOMATION | PULSE PRO

- Group Automate shades by room and conveniently control them accordingly.
- Personalize shade control and organize how your shades operate by specific daily events or scenes automatically at the optimal time.
- Roller shades, Drapery, Outdoor Shades, Awnings... control every shade type from one screen.
- Installers have access to information that assists them identify potential issues.
- The signal indicator highlights when there is no connection between the motor and the hub, to assist with troubleshooting.
- The APP is available in English, Italian, Dutch, French or German.



## REMOTE CONTROLS

### PUSH SERIES



Push ONE, 5 Channel, 15 Channel & Push PRO Remotes available in black & white

### WALL CONTROLS



1, 2 & 15 Channel Controls

## ACCESSORIES | COMMERCIAL

### DC POWER DISTRIBUTION PANEL



- Power your Automate DCRF motors from a compact, central location that can service up to 18 motors.
- Easily check each individual motors power status by viewing the prominent green LED's on the DC Power Panel.
- The panel can be used with many different wire types (from 26 to 14 AWG). Any pre-wired installation may readily use DCRF motors and the Power Distribution Panel.

## ACCESSORIES | GENERAL

### ARC REPEATER



Extend range of ARC Protocols.

### INTERNAL SUN SENSOR



Control shades with a choice of preset light thresholds and control modes.

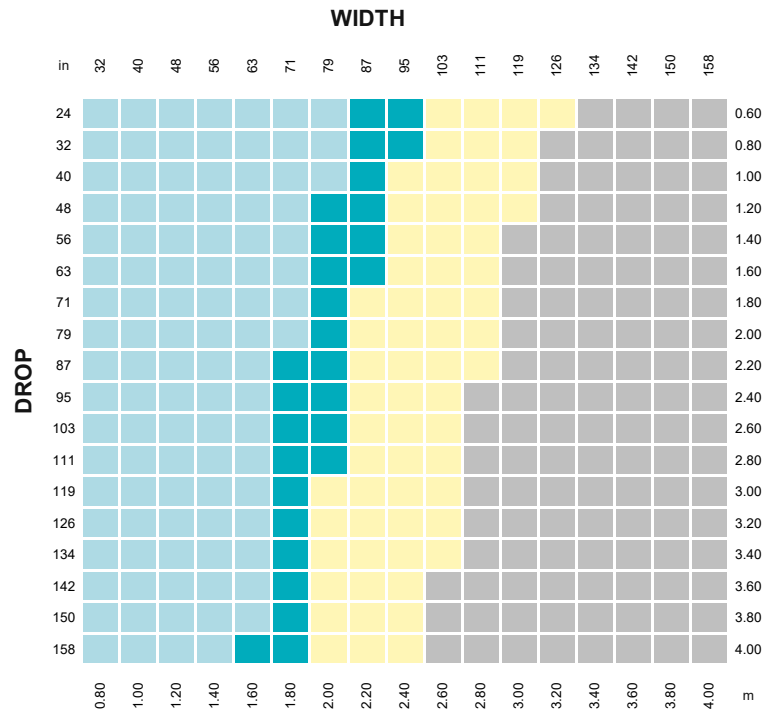
### ARC RELAY TRANSMITTER



- Provide interface between third party smart home motor systems and ARC motors.
- Three contact inputs - Up, Down & Stop.
- Group Motor Control.
- Wireless control of ARC motors.
- Roller mode and Step mode for venetian motors.
- 12V or 24V power source compatible.

# MOTORS | ARC PRO SPECIFICATIONS

## TUBE CAPACITY



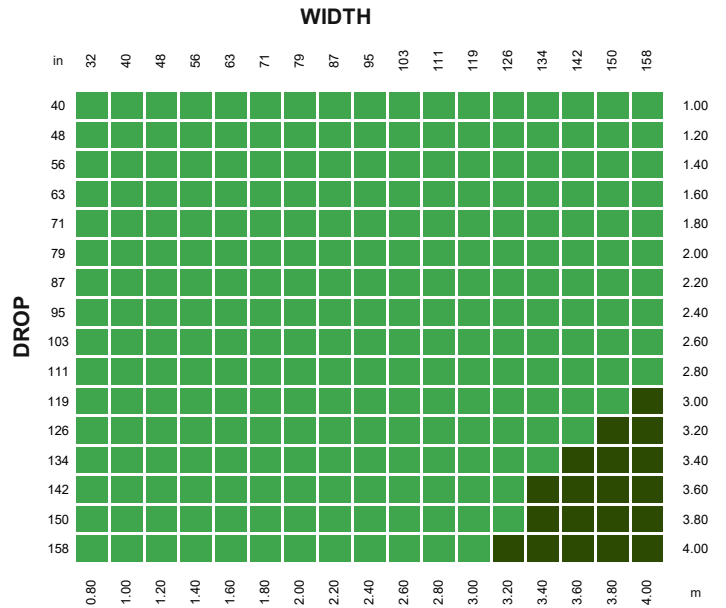
### TUBES



### PARAMETERS:

FABRIC DENSITY: 0.390gsm  
 FABRIC THICKNESS: 0.6mm  
 WEIGHT BAR: D30 Bottom Rail  
 TUBE DEFLECTION: 1.05mm/m

## CONTROL CAPACITY



### MOTOR



### PARAMETERS:

FABRIC DENSITY: 0.390gsm  
 FABRIC THICKNESS: 0.6mm  
 WEIGHT BAR: D30 Bottom Rail  
 \*Use with 1.5" Tube Only  
 \*\* Use with 1.5" or 2" Tube

# PRODUCT SPECIFICATIONS

## TECHNICAL DATA

| SINGLE BRACKETS | MOTORS | MINIMUM SHADE WIDTH<br>(no covers) |     |            |     | TUBE DEDUCTIONS<br>(no bracket covers) |    |            |    | TUBE DEDUCTIONS<br>(with bracket covers) * |    |            |    |
|-----------------|--------|------------------------------------|-----|------------|-----|--|----|------------|----|--|----|------------|----|
|                 |        | STD PIN END                        |     | HD PIN END |     | STD PIN END                            |    | HD PIN END |    | STD PIN END                                |    | HD PIN END |    |
|                 |        | inch                               | mm  | inch       | mm  | inch                                   | mm | inch       | mm | inch                                       | mm | inch       | mm |
| LX              | 1.1 Nm | 21.8                               | 555 | 23.6       | 598 | 1.1                                    | 27 | 1.1        | 29 | 1.2  | 29 | 1.2        | 31 |
|                 | 2.0 Nm | 27.7                               | 703 | 29.4       | 747 | 0.6                                    | 15 | 0.6        | 15 | 0.6  | 16 | 0.6        | 16 |
| SKYLINE         | 1.1 Nm | 21.8                               | 554 | 23.5       | 598 | 1.1                                    | 27 | 1.1        | 28 | 1.2  | 30 | 1.2        | 31 |
|                 | 2.0 Nm | 27.7                               | 703 | 29.4       | 746 | 0.6                                    | 15 | 0.6        | 15 | 0.7  | 17 | 0.7        | 17 |
| RIBBED          | 1.1 Nm | 21.8                               | 554 | 23.5       | 598 | 1.1                                    | 27 | 1.1        | 28 | 1.2  | 30 | 1.2        | 31 |
|                 | 2.0 Nm | 27.7                               | 703 | 29.4       | 746 | 0.6                                    | 15 | 0.6        | 15 | 0.7  | 17 | 0.7        | 17 |
| NARROW          | 1.1 Nm | 21.8                               | 554 | 23.5       | 598 | 1.1                                    | 27 | 1.1        | 28 | 1.2  | 30 | 1.2        | 31 |
|                 | 2.0 Nm | 27.7                               | 703 | 29.4       | 746 | 0.6                                    | 15 | 0.6        | 15 | 0.7  | 17 | 0.7        | 17 |
| OPULENCE        | 1.1 Nm | 21.9                               | 557 | 23.7       | 601 | 1.2                                    | 30 | 1.2        | 31 | N/A  |    | N/A        |    |
|                 | 2.0 Nm | 27.8                               | 706 | 29.5       | 749 | 0.7                                    | 17 | 0.7        | 17 | N/A  |    | N/A        |    |

| DOUBLE BRACKETS                     |        |      |     |      |     |     |    |     |    |     |    |     |    |
|-------------------------------------|--------|------|-----|------|-----|-----|----|-----|----|-----|----|-----|----|
| DOUBLE VERTICAL                     | 1.1 Nm | 21.9 | 556 | 23.6 | 599 | 1.1 | 28 | 1.2 | 30 | N/A |    | N/A |    |
|                                     | 2.0 Nm | 27.7 | 704 | 29.4 | 747 | 0.6 | 16 | 0.6 | 16 | N/A |    | N/A |    |
| DOUBLE V SLIM                       | 1.1 Nm | 21.9 | 555 | 23.6 | 599 | 1.1 | 28 | 1.2 | 29 | 1.3 | 33 | 1.3 | 34 |
|                                     | 2.0 Nm | 27.7 | 704 | 29.4 | 747 | 0.6 | 16 | 0.6 | 16 | 0.7 | 18 | 0.7 | 18 |
| DOUBLE HORIZONTAL                   | 1.1 Nm | 21.9 | 556 | 23.6 | 599 | 1.1 | 28 | 1.2 | 30 | N/A |    | N/A |    |
|                                     | 2.0 Nm | 27.7 | 704 | 29.4 | 747 | 0.6 | 16 | 0.6 | 16 | N/A |    | N/A |    |
| UNIVERSAL DOUBLE<br>(38/48mm pitch) | 1.1 Nm | 21.8 | 555 | 23.5 | 598 | 1.1 | 27 | 1.1 | 29 | 1.2 | 31 | 1.3 | 33 |
|                                     | 2.0 Nm | 27.7 | 703 | 29.4 | 746 | 0.6 | 15 | 0.6 | 15 | 0.7 | 17 | 0.7 | 17 |

**Note: All values in the table apply to the 1-1/2" tube only.**

**\*Add +1mm to deductions for Motor Cover installations.**

**Minimum Shade Width based on 5mm gap between hardware in tube.**

# ALUMINUM TUBES

## TUBE COMPATIBILITY



| TUBE     |                        | 1"          | 1-1/8"      | 1-1/4"      | 1-1/2"        | 2"        | 2-1/2"      | 3-1/4"      |
|----------|------------------------|-------------|-------------|-------------|---------------|-----------|-------------|-------------|
| OD       |                        | 1.1"   27mm | 1.2"   30mm | 1.3"   33mm | 1-1/2"   39mm | 2"   51mm | 2.6"   65mm | 3.3"   83mm |
| D/S TAPE |                        | ✓           | ✓           | ✓           | ✓             | ✓         | ✓           | ✓           |
| NO TAPE  |                        |             |             | ✓           | ✓             | ✓         | ✓           |             |
| CLUTCH   | SL10                   | ✓           | ✓           | ✓           | ✓             |           |             |             |
|          | SL15                   |             |             |             | ✓             |           |             |             |
|          | SL20/ G200             |             |             |             | ✓             | ✓         |             |             |
|          | SL30/ G400             |             |             |             | ✓             |           | ✓           | ✓           |
| MOTOR    | 0.7, 1.1Nm             |             |             | ✓           | ✓             |           |             |             |
|          | 2.0Nm                  |             |             |             | ✓             | ✓         |             |             |
|          | 3.0, 6.0, 10.0, 15.0Nm |             |             |             | ✓             | ✓         | ✓           | ✓           |
| SPRING   | ESP                    |             |             |             | ✓             |           |             |             |
|          | ESU/ESW                |             |             |             | ✓             |           |             |             |
|          | ESA                    |             |             |             | ✓             | ✓         |             |             |

# BRACKETS | SINGLE

## FEATURES & BENEFITS

- Available in multiple styles.
- Specialized brackets optimized & designed for specific systems.
- Opulence - color matched covers to hide screws.



## MOUNTING SOLUTIONS



**COLOR RANGE**

- black
- white
- zinc/gray
- vanilla
- satin nickel\*
- antique bronze\*

\* OPULENCE™ Only

**OPTIONS**

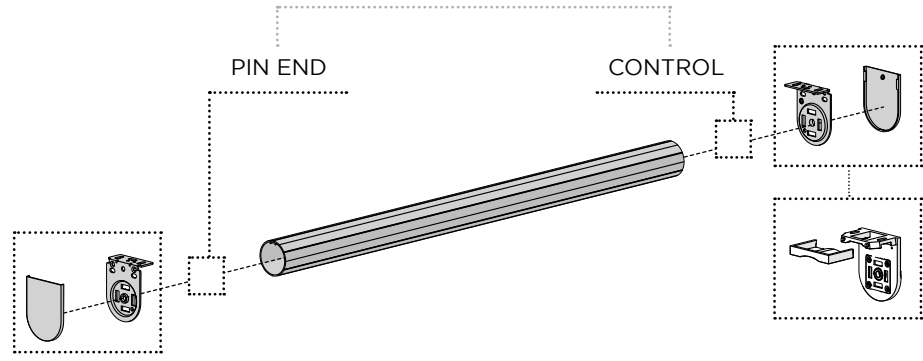
OPULENCE™

STANDARD / LX

COVERS

**HARDWARE**

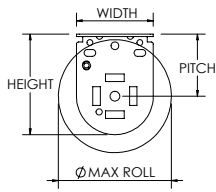
LIMITED LIFETIME WARRANTY



**LX SKYLINE BRACKET**  
Easy installation

**OPULENCE™ SERIES BRACKETS**  
Bearings for reduced shade noise  
Magnetic screw covers

## TECHNICAL DATA

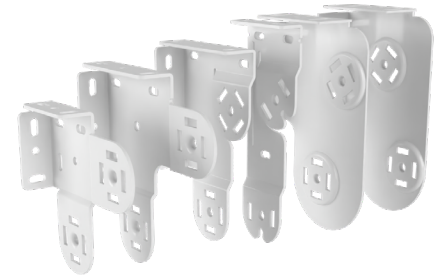


|                  | PITCH | MAX ROLL |     | BRACKET WIDTH |     | BRACKET HEIGHT |     |    |
|------------------|-------|----------|-----|---------------|-----|----------------|-----|----|
|                  |       | inch     | mm  | inch          | mm  | inch           | mm  |    |
| <b>LX</b>        | 1.6   | 40       | 3.0 | 77            | 2.0 | 50             | 2.6 | 65 |
|                  | 2.2   | 55       | 4.1 | 105           |     |                | 3.2 | 80 |
| <b>STANDARD</b>  | 1.6   | 41       | 3.0 | 76            | 2.2 | 56             | 2.4 | 60 |
|                  | 2.1   | 53       | 4.0 | 102           |     |                | 2.9 | 74 |
|                  | 2.9   | 74       | 5.0 | 127           |     |                | 3.6 | 91 |
| <b>NARROW</b>    | 1.3   | 32       | 2.3 | 59            | 1.5 | 38             | 2.0 | 51 |
|                  | 1.6   | 41       | 3.0 | 76            |     |                | 2.4 | 60 |
|                  | 2.1   | 54       | 4.0 | 102           |     |                | 2.9 | 73 |
|                  | 2.9   | 73       | 5.0 | 127           |     |                | 3.6 | 92 |
| <b>OPULENCE™</b> | 1.8   | 45       | 3.0 | 76            | 2.3 | 58             | 2.9 | 74 |

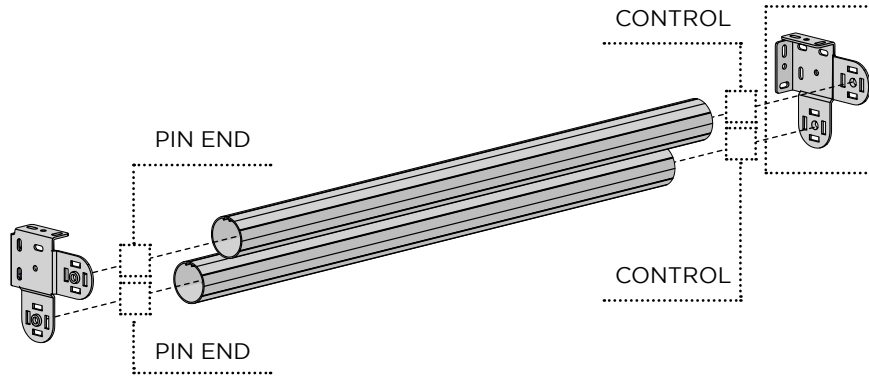
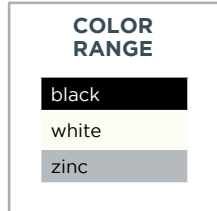
# BRACKETS | DOUBLE

## FEATURES & BENEFITS

- Combine sheer fabric and block-out fabric in one installation.
- Ultimate privacy while still allowing light into any given room.
- Universal bracket to simplify installation.
- Available in multiple configurations for every application.



## MOUNTING SOLUTIONS



## TECHNICAL DATA

|                         |  |  | MAX ROLL |    | BRACKET WIDTH |     | BRACKET HEIGHT |     |
|-------------------------|--|--|----------|----|---------------|-----|----------------|-----|
|                         |  |  | inch     | mm | inch          | mm  | inch           | mm  |
| <b>DOUBLE VERTICAL</b>  |  | Slim profile bracket with top shade installed on a 45° angle for improved operation.                 | 3.0      | 76 | 2.0           | 51  | 5.7            | 144 |
| <b>DOUBLE V SLIM</b>    |  | Slim profile bracket that allows top front shade to be standard or reverse roll.                     | 2.6      | 66 | 3.0           | 77  | 5.1            | 128 |
| <b>DOUBLE SLIM</b>      |  | Slim profile brackets with the option to have the top shade be oriented in the front or in the back. | 2.6      | 66 | 3.3           | 85  | 5.8            | 148 |
| <b>UNIVERSAL DOUBLE</b> |  | Square Profile brackets with 38mm and 48mm pitch options.  | 2.4      | 60 | 4.0           | 102 | 4.0            | 102 |
|                         |  |  | 2.7      | 68 | 4.8           | 122 | 4.8            | 122 |

# HEM BARS

## FEATURES & BENEFITS

- Variety of sizes to suit all shade solutions.
- Multiple add-ons available to customize installation.
- End caps suitable to specific upgrades.
- Feed funnels available to assist in assembly.



**LIMITED LIFETIME WARRANTY**

### COLORS

REFER TO CATALOG

### OPTIONS



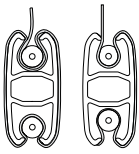
BUBBLE SEAL



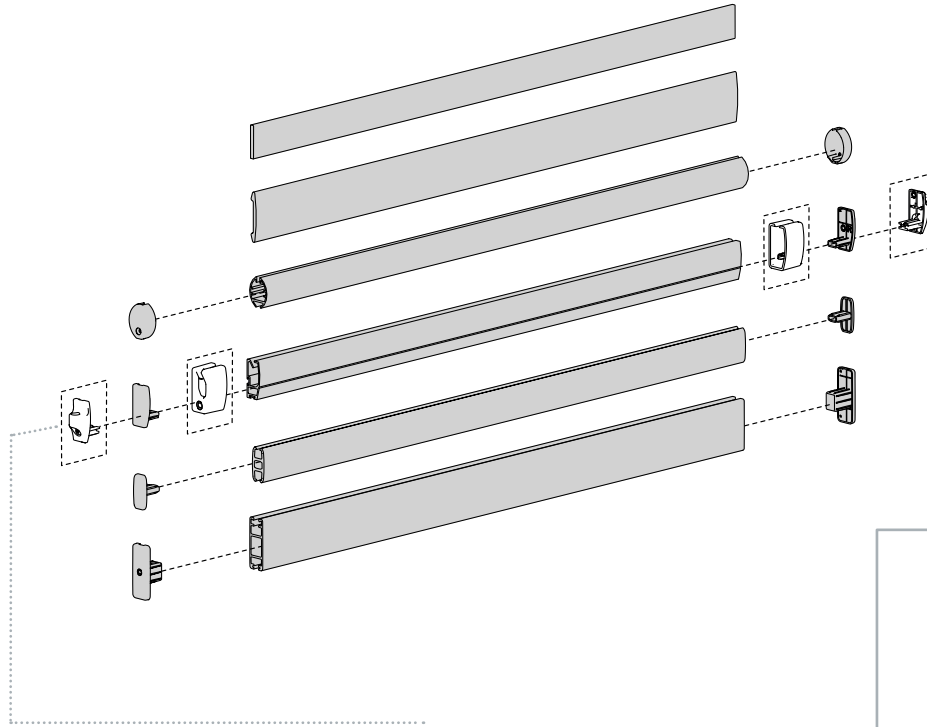
FABRIC BRUSH



BALLAST



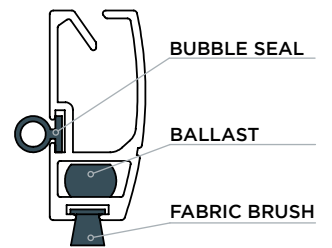
OPULENCE



### HEM BARS

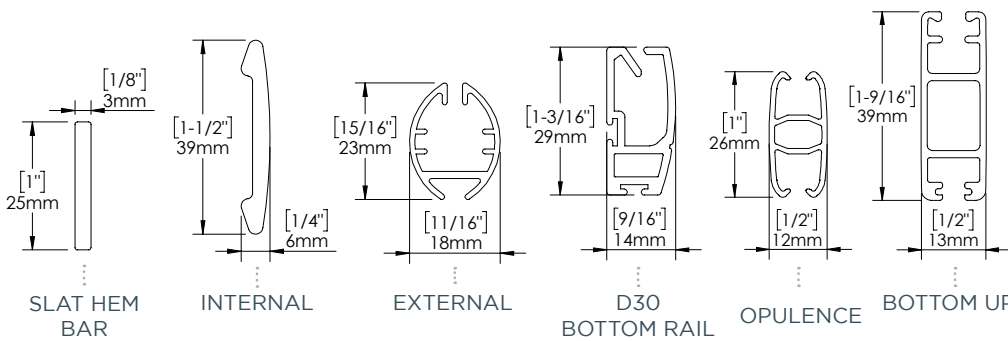
|          |
|----------|
| SLAT     |
| INTERNAL |
| EXTERNAL |

### ADD-ON EXAMPLE | D30



WIRE GUIDE

## TECHNICAL DATA



### HEM BAR COMPATIBILITY

|                        |  | lbs/ft | kg/m | ROUND SPLINE   3mm | ROUND SPLINE   5mm | FLAT SPLINE   9mm | FLAT SPLINE   15mm | FABRIC FEEDING FUNNELS | BALLAST | FABRIC BRUSH | BUBBLE SEAL | EDGE SIDE CHANNEL | WIRE GUIDE END CAPS | HEM BAR HANDLES |
|------------------------|--|--------|------|--------------------|--------------------|-------------------|--------------------|------------------------|---------|--------------|-------------|-------------------|---------------------|-----------------|
| <b>SLAT</b>            | Minimal heat-sealed pocket solution.   | 0.15   | 0.2  |                    |                    |                   |                    |                        |         |              |             | ✓                 |                     |                 |
| <b>INTERNAL</b>        | Heat-sealed pocket solution.   | 2.28   | 3.4  |                    |                    |                   |                    |                        |         |              |             | ✓                 |                     |                 |
| <b>EXTERNAL</b>        | Round aesthetic.   | 1.81   | 2.7  |                    |                    |                   | ✓                  |                        |         |              |             |                   |                     |                 |
| <b>D30 BOTTOM RAIL</b> | Premium solution. Fabric brush & bubble seal reduces noise and light gap.        | 2.21   | 3.3  |                    |                    |                   | ✓                  | ✓                      | ✓       | ✓            | ✓           | ✓                 | ✓                   | ✓               |
| <b>OPULENCE</b>        | Suitable for half wrap and full wrap, and color matching with Opulence Brackets. | 1.70   | 2.5  | ✓                  | ✓                  | ✓                 |                    |                        | ✓       |              |             | ✓                 |                     | ✓               |
| <b>BOTTOM UP</b>       | Suitable for bottom up shading systems   | 3.32   | 4.9  |                    |                    | ✓                 |                    |                        | ✓       |              |             |                   |                     |                 |