

## OVERVIEW: RB09 CHAIN CONTROL S45 SYSTEM

Step into the future with Acmeda's flagship RB09 chain control system. Utilising the very latest in technology, the RB09 brings over twenty years of experience into one cutting-edge design. The RB09 sets the benchmark for performance, function and aesthetics, with faster assembly time, easy installation, best in class operation and a slender, high gloss finish. With a wide range of options and add-on features, the RB09 is one of the most comprehensive manual roller systems on the market.

## AESTHETIC FEATURES

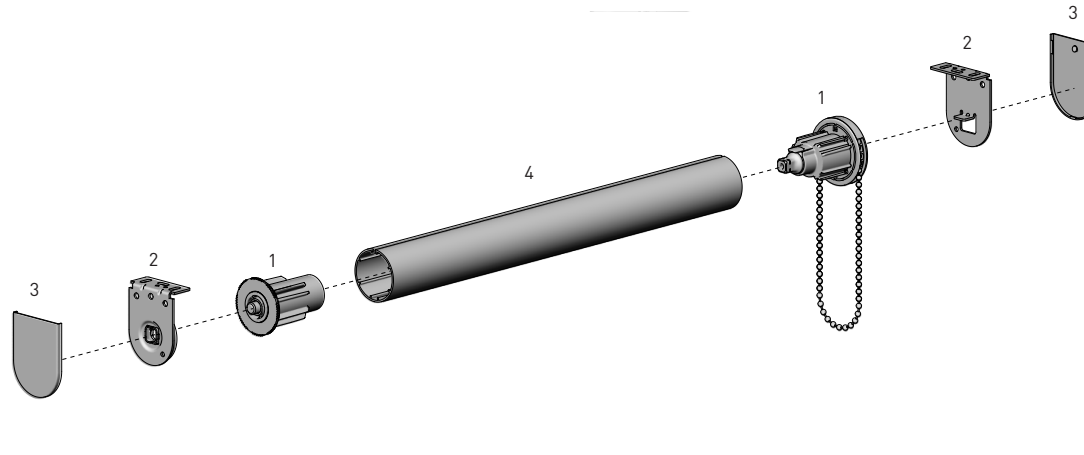
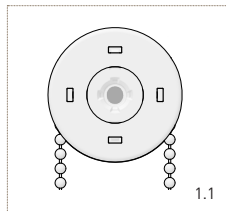
- High polish finish
- Reduced light gaps

## ASSEMBLY / INSTALLATION BENEFITS

- New two piece snap-lock winder assembly
- Reduce chain assembly time by up to 75%
- 10mm plastic Idler pin, extendable in 1mm increments.
- Comfort grip release wheel
- Advanced snap lock booster fitment
- Self-locating installation feature (see figure 1.1)

## FUNCTIONAL BENEFITS

- Smoother operation
- Increased load capacity
- Patent protected



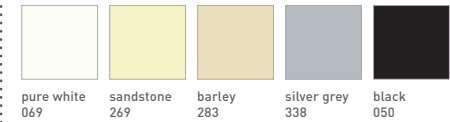
## SYSTEM INDEX

- 1 RB09 Chain Winder & Extended Idler - S45  
RB09-4501-xxx000
- 2 LX | Easy-Lock Installation Bracket - 40 & 55p  
RB09-0351-xxx0##
- 3 LX / VX Bracket Cover Cap - 40 & 55p  
RB08-4151-xxx0##
- 4 Aluminium Tube - S45 (LIGHT / STANDARD / HD)  
RB93-044#-000580

xxx= colour

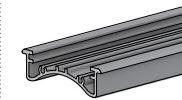
## = size

## COLOUR RANGE



## SYSTEM OPTIONS

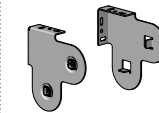
## MOUNTING RAIL



## EASY-LIFT SPRING ASSIST BOOSTER

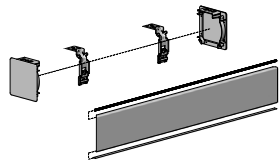


## COMBO BRACKET

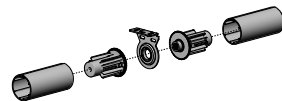


## ADD ON SYSTEMS

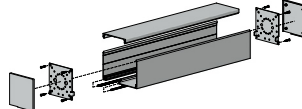
## FRS100 VALANCE SYSTEM



## EASY-LINK S45



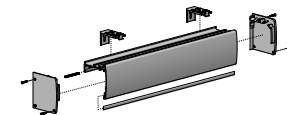
## SQUARE BOX 100



## INTERNAL WIRE GUIDE

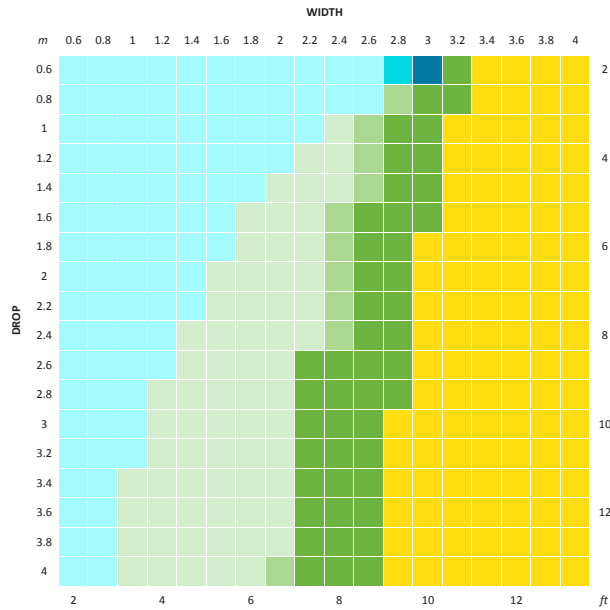


## PELMET 95



SPECIFICATIONS: RB09 CHAIN CONTROL S45 SYSTEM

SYSTEM CAPACITY



RB09 | Minimum Blind Width: 150mm / 6inches  
 RB09 + RETROFIT | Minimum Blind Width: 1m / 39inches

CONTROL	LEGEND	DESCRIPTION	EASY-LINK REQ.
RB09	[Light Blue]	S45 HD / STD / LT	[Yellow]
	[Medium Blue]	S45 HD / STD	[Yellow]
	[Dark Blue]	S45 HD	[Yellow]
RB09 + RETROFIT	[Light Green]	S45 HD / STD / LT	[Yellow]
	[Medium Green]	S45 HD / STD	[Yellow]
	[Dark Green]	S45 HD	[Yellow]

\*Refer to S40 / 45 Easy-Link QRG for further details

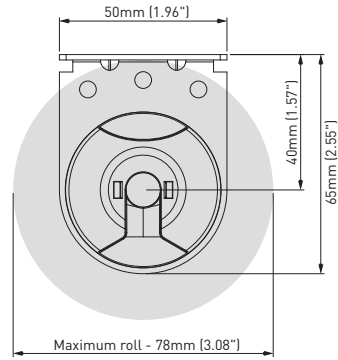
Parameters

Fabric Density: 420gsm  
 Fabric Thickness: 0.6mm  
 Weight Bar: D30 Bottom Rail

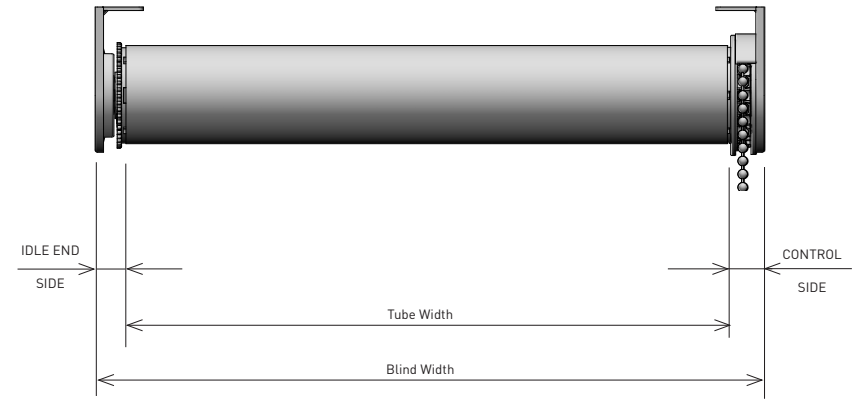
Maximum Hold Weights

S45 Light Tube: 4.7kg / 10.3 pounds (RB09), 13.4kg / 30 pounds (RB09 + Booster)  
 S45 STD Tube: 4.6kg / 10 pounds (RB09), 13.0kg / 29 pounds (RB09 + Booster)  
 S45 HD Tube: 4.2kg / 9.2 pounds (RB09), 11.8kg / 26 pounds (RB09 + Booster)

MAX ROLL

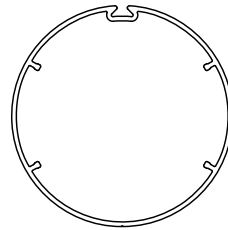


DEDUCTIONS



	IDLE END SIDE	CONTROL SIDE	OVERALL DEDUCTION
LX BRACKETS - with covers	14mm [0.55"]	15mm [0.59"]	29mm [1.14"]
LX BRACKETS - withOUT covers	13mm [0.51"]	13mm [0.51"]	26mm [1.02"]

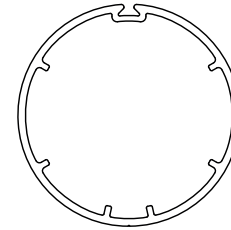
ALUMINIUM TUBES



S45 LIGHT

T-Spline Tube

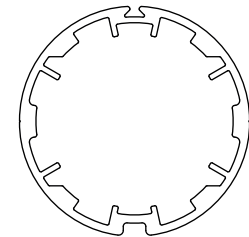
CODE: RB93-0443-000580  
 RB93-6443-000580 (with D/S tape)  
 O.D: 43mm  
 Length: 5.8metres



S45 STANDARD

T-Spline Tube

CODE: RB93-0444-000580  
 RB93-6444-000580 (with D/S tape)  
 O.D: 44mm  
 Length: 5.8metres



S45 HEAVY DUTY

T-Spline Tube

CODE: RB93-0449-000580  
 RB93-6449-000580 (with D/S tape)  
 O.D: 49mm  
 Length: 5.8metres