

AERO - DUAL ROLLER SYSTEM S45

Our innovative AERO dual roller system, offers a premium aesthetically pleasing and technologically advanced solution. Controlling two blinds with either a single chain or independent spring mechanism, raising and lowering blinds to your preferred top and bottom locations, in a smooth and controlled motion, with one simple touch.

AESTHETICAL FEATURES

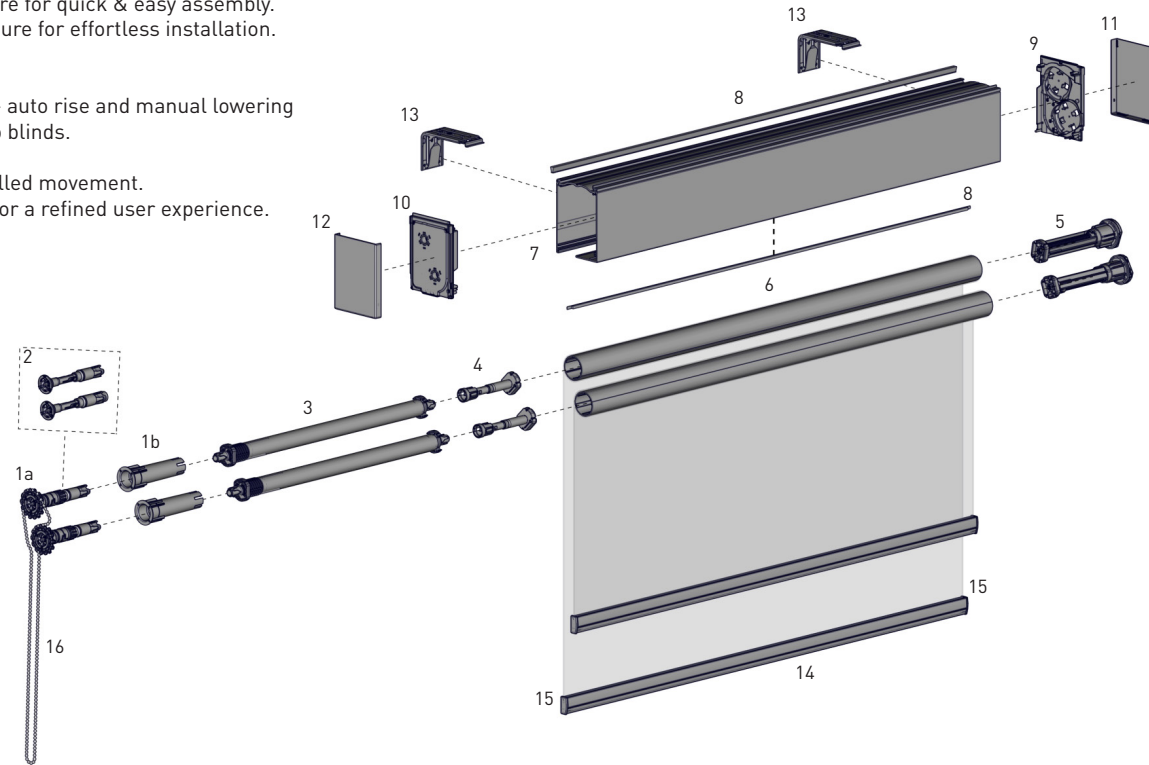
- Contemporary compact headbox completed with covers for a seamless finish.
- Slimline mounting clips resulting in minimal light gaps.

PRODUCTION / ASSEMBLY FEATURES

- Easy pre-tensioning through control bracket.
- Revolutionary top and bottom limit setting function, with easy push button control.
- Colour coded LH & RH hardware for quick & easy assembly.
- Self-locating chain winder feature for effortless installation.

FUNCTIONAL BENEFITS

- Semi-Automatic functionality - auto rise and manual lowering
- One single chain to control two blinds.
- Alternative chainfree control.
- Decelerator for smooth controlled movement.
- Top and bottom limit settings for a refined user experience.
- Patent protected



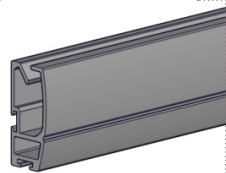
*LH Control Shown

SYSTEM INDEX

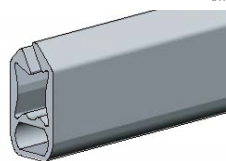
1a	AERO Dual Pretension Chain Control
	RB12-3002-xxx140 - Chain Control LH
	RB12-3002-xxx240 - Chain Control RH
1b	AERO Connector - Chain Winder/Booster
	RB12-4510-xxx045
2	AERO Dual Pretension Chainfree Control
	RB12-5001-xxx040 - Chainfree Control
3	Booster Uni.
	RB12-450#-xxx045 - Short (0), Light (1), Standard (2) & HD (3)
4	Booster Decelerator
	RB12-710#-xxx#45 - LH (1) & RH (2)
5	AERO Limiter Idle End
	RB12-600#-xxx#45 - LH (1) & RH (2)
6	S45 Aluminium Tube
	RB93-044#-000580 - LIGHT, STD or HD
7	AERO Dual Cassette (Back, Cover & Top)
	RB12-0103-xxxLLL - Top
	RB12-020#-xxxLLL - Cover (1), Back (2)
8	Fabric Brush - T-Slot
	SB91-0011-xxx###
	SB91-0012-xxx###
9	AERO Dual Cassette Idler Bracket
	RB12-1002-xxx#40 - LH (1) RH (2)
10	AERO Dual Cassette Chain Control Bracket
	RB12-1001-xxx#40 - Chain LH (1) RH (2)
	RB12-1003-xxx#40 - Chainfree LH (1) RH (2)
11	AERO Dual Cassette Chainfree/Idler Control Cap
	RB12-1202-xxx040
12	AERO Dual Cassette Chain Control Cap
	RB12-1201-xxx040
13	AERO Dual Cassette Mounting Clip
	RB12-2001-xxx000
14	D30 SILENT Medium Alum. Bottom Rail
	RB91-1232-xxx580
15	D30 Medium Bottom Rail End Caps
	RB91-2131-xxx002
16	Chains & Accessories
	xxx - Colour

SYSTEM OPTIONS - COMPATIBLE BOTTOM RAILS

D30 Silent Rail



Flat Rail



COLOUR RANGE

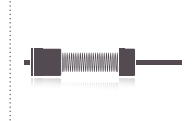


CONTROL OPTIONS

CHAIN CONTROL



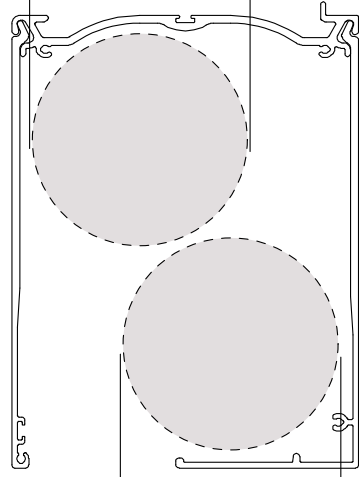
CHAINFREE



SPECIFICATIONS

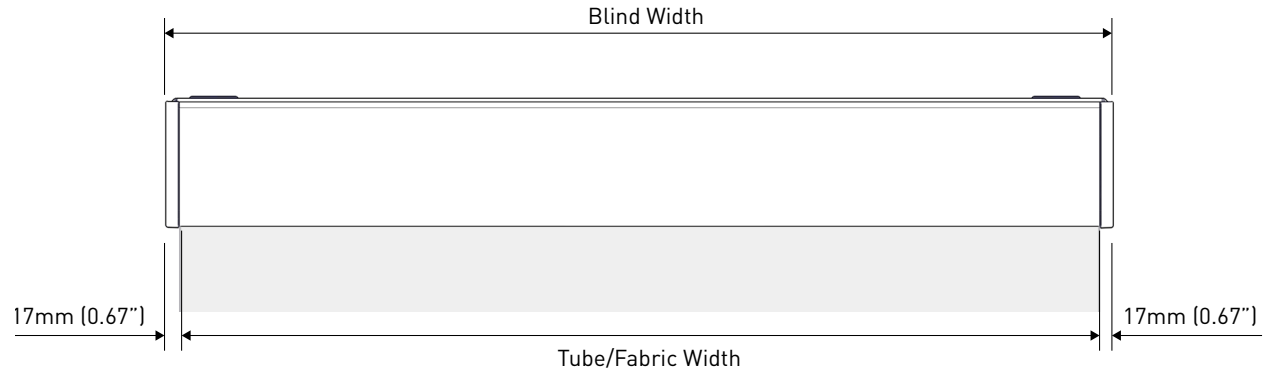
MAX ROLL

MAX ROLL: 62mm (2.44")



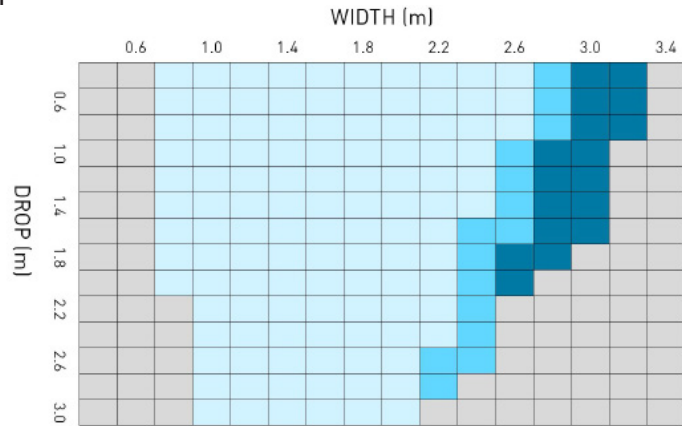
MAX ROLL: 62mm (2.44")

DEDUCTION



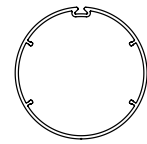
TUBE/FABRIC WIDTH
BLIND WIDTH - 34mm (1.34")

SYSTEM CAPACITY



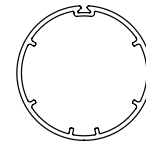
LEGEND	DESCRIPTION
Light Blue	S45 LIGHT STANDARD HEAVY DUTY
Medium Blue	S45 STANDARD HEAVY DUTY
Dark Blue	S45 HEAVY DUTY
Grey	OUTSIDE SPECIFICATION

TUBE SPECS



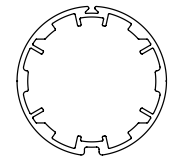
S45 LIGHT T-Spline Tube

Code: RB93-0443-000LLL
 RB93-6443-000LLL (with D/S tape)
 OD: 43mm (1.69")
 Length: 5.8m (19.029ft)



S45 STANDARD T-Spline Tube

Code: RB93-0444-000LLL
 RB93-6444-000LLL (with D/S tape)
 OD: 44mm (1.73")
 Length: 5.8m (19.029ft)



S45 HEAVY DUTY T-Spline Tube

Code: RB93-0449-000LLL
 RB93-6449-000LLL (with D/S tape)
 OD: 49mm (1.92")
 Length: 5.8m (19.029ft)