

# ROMANS

## WORKROOM

|          |    |
|----------|----|
| Workroom | 83 |
|----------|----|

## ROLLER ROMAN

|                |    |
|----------------|----|
| RR10 Manual    | 85 |
| RR10 Motorized | 87 |
| RR20 Manual    | 88 |
| RR20 Motorized | 89 |

## SS38 CHAIN CONTROL SYSTEM

|                           |    |
|---------------------------|----|
| SS38 Chain Control System | 91 |
|---------------------------|----|

## EASY SPRING PLUS

|                               |    |
|-------------------------------|----|
| Easy Spring Plus Roller Roman | 93 |
|-------------------------------|----|

## RING LOCK ACCESSORIES

|                       |    |
|-----------------------|----|
| Ring Lock Accessories | 94 |
|-----------------------|----|

## NO-SEW ROMAN BAR ACCESSORIES

|                              |    |
|------------------------------|----|
| No-Sew Roman Bar Accessories | 95 |
|------------------------------|----|

## CORDS & CHAINS

|                |    |
|----------------|----|
| Cords & Chains | 96 |
|----------------|----|

## SAFETY TAGS

|             |    |
|-------------|----|
| Safety Tags | 99 |
|-------------|----|

**WORKROOM CLUTCH**

|      |       |        |
|------|-------|--------|
| TYPE | Large | Slim   |
| CODE | CSCL  | CSCLSM |
| PACK | 25    | 25     |



COLOR. Natural

**COMBO HEAD SCREW**

|      |            |
|------|------------|
| CODE | SC6625C500 |
| PACK | 500        |



**CLUTCH COVER WORKROOM SLIM**

|      |         |           |
|------|---------|-----------|
| TYPE | Large   | Slim      |
| CODE | CSCLCVR | CSCLSMCVR |
| PACK | 25      | 25        |



COLOR. Natural

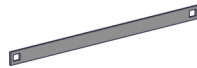
**HEX SLOTTED SCREW**

|      |            |
|------|------------|
| CODE | SC6750H500 |
| PACK | 500        |



**SPEAR DRIVE**

Pair



|      |        |
|------|--------|
| TYPE | 3.8"   |
| CODE | VSPR38 |
| PACK | 100    |

|      |        |        |        |
|------|--------|--------|--------|
| TYPE | 4.6"   | 5.7"   | 6.3"   |
| CODE | VSPR46 | VSPR57 | VSPR63 |
| PACK | 100    | 100    | 100    |

**SCREWS FOR WORKROOM SHAFT CONNECTOR**

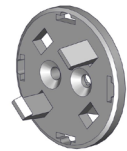
|      |       |        |
|------|-------|--------|
| CODE | CSDCS | CSDCSW |
| PACK | 100   | 100    |



COLOR. White (W)

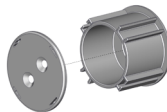
**WORKROOM SHAFT CONNECTOR**

|      |       |
|------|-------|
| CODE | CSDDC |
| PACK | 20    |



**WORKROOM DRIVE DISK AND RETAINER SET**

|      |        |
|------|--------|
| CODE | CSDDRS |
| PACK | 100    |



COLOR. Natural

**WORKROOM SHAFT END CAP**

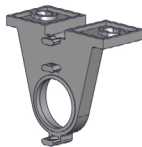
|      |      |
|------|------|
| CODE | CSEC |
| PACK | 100  |



Color. White

**WORKROOM BRACKET**

|      |                 |                |
|------|-----------------|----------------|
| TYPE | Large   Natural | Slim   Vanilla |
| CODE | CSBKT           | SNSBKT         |
| PACK | 100             | 100            |



COLOR. Natural, Vanilla

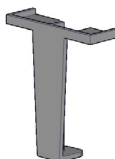
**SHAFT**

|      |                   |                     |                  |
|------|-------------------|---------------------|------------------|
| TYPE | 14 ft.   Aluminum | 14 ft.   Fiberglass | 7 ft.   Aluminum |
| CODE | VRS14A            | VRS14FG             | VRS7A            |
| PACK | 25                | 45                  | 25               |



**WORKROOM STOP BRACKET**

|      |     |
|------|-----|
| CODE | SSB |
| PACK | 100 |



COLOR. Vanilla

**BOTTOM RING SET**

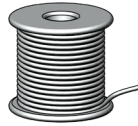
|      |       |
|------|-------|
| CODE | CSBRS |
| PACK | 100   |



**LIFT CORD**

|      |             |              |
|------|-------------|--------------|
| TYPE | 100 yd roll | 1000 yd roll |
| CODE | CSLC100     | CSLC1000     |
| PACK | 1           | 1            |

COLOR. White



**LIFT CORD LOCK LEVELLING DEVICE**

|      |       |
|------|-------|
| CODE | CSORB |
| PACK | 1000  |

COLOR. Clear



**SCREW EYE**

|      |      |
|------|------|
| CODE | CSSE |
| PACK | 200  |



**WORKROOM CORD CLIP**

|      |      |
|------|------|
| CODE | CSCC |
| PACK | 100  |



**SAFETY SHROUD**

|      |         |
|------|---------|
| CODE | CSS500W |
| PACK | 1       |

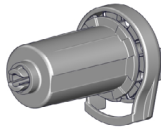
COLOR. White (W)



**SL10 MINI CLUTCH**

|      |          |
|------|----------|
| CODE | SL5H01W4 |
| PACK | 25       |

COLOR. White (W)



**FOREVER RING (PACK OF 1000)**

|      |       |
|------|-------|
| CODE | STSFR |
| PACK | 1     |

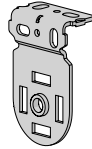
COLOR. Clear



**SKYLINE NARROW BRACKET**

|      |          |
|------|----------|
| CODE | SLNB660W |
| PACK | 50       |

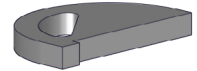
COLOR. White



**RING LOCK | LEVEL LOCK INSERT**

|      |         |
|------|---------|
| CODE | STSLILP |
| PACK | 1       |

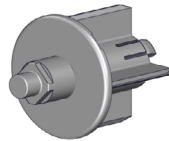
COLOR. Clear



**SKYLINE PIN END**

|      |          |
|------|----------|
| CODE | SLPEV03W |
| PACK | 25       |

COLOR. White



**LOCKING RETAINING SPEARS**

|      |           |
|------|-----------|
| CODE | RE0030420 |
| PACK | 25        |

COLOR. Black



**SKYLINE ADAPTER**

|      |        |
|------|--------|
| CODE | SLA03W |
| PACK | 25     |

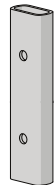
COLOR. White



**CHAIN SHIELD**

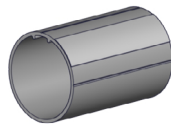
|      |                  |                  |
|------|------------------|------------------|
| TYPE | 8"               | 20"              |
| CODE | RB91-1346-001020 | RB91-1346-001051 |
| PACK | 10               | 10               |
| TYPE | 32"              | 44"              |
| CODE | RB91-1346-001081 | RB91-1346-001112 |
| PACK | 10               | 10               |

COLOR. Clear (001)



**ALUMINUM TUBE | 1-1/4"**  
No Tape | 92" Length

|      |            |
|------|------------|
| CODE | RTEA3U92IN |
| PACK | 10         |



**TUBE CLIP**

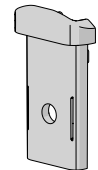
|      |         |
|------|---------|
| CODE | RRTC125 |
| PACK | 25      |



**CHAIN SHIELD FUNNEL - CLEAR**

|      |                  |
|------|------------------|
| CODE | RB91-1346-001001 |
| PACK | 50               |

COLOR. Clear (001)



**SAFETY RING LOCK**

|      |            |
|------|------------|
| TYPE | 1.4mm Cord |
| CODE | STSRL      |
| PACK | 1          |

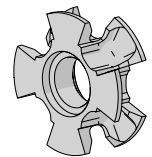
COLOR. Clear



**CHAIN SHIELD WHEEL - NATURAL**

|      |                  |
|------|------------------|
| CODE | RB91-1346-060002 |
| PACK | 25               |

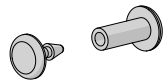
COLOR. Natural (060)



**CHAIN SHIELD BINDING POST SET - CLEAR**



|      |                  |
|------|------------------|
| CODE | RB91-1346-001003 |
| PACK | 25               |

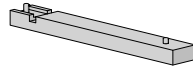


COLOR. Clear (001)

**CHAIN SHIELD SPACING JIG**



|      |                  |
|------|------------------|
| CODE | TM91-1346-000002 |
| PACK | 1                |



**5V ZERO LI-ION 1.1NM CT20 Q MT [Ø25/5V/28RPM](SKY)**

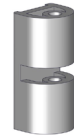
|      |                     |
|------|---------------------|
| CODE | MT01-I325-069029-CT |
| PACK | 20                  |



COLOR. White (069)

**SAFETY RING LOCK**

|      |            |
|------|------------|
| TYPE | 1.4mm Cord |
| CODE | STSRL      |
| PACK | 1          |



COLOR. Clear

**5V RECHARGABLE BATTERY PACK 2600MAH**

|      |                  |
|------|------------------|
| CODE | MT03-0305-069003 |
| PACK | 1                |



COLOR. Pure White (069)

**RING LOCK | FOREVER RING**

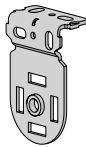
|      |       |
|------|-------|
| CODE | STSFR |
| PACK | 1     |



COLOR. Clear

**SKYLINE NARROW BRACKET**

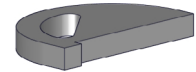
|      |          |
|------|----------|
| CODE | SLNB660W |
| PACK | 50       |



COLOR. White (W)

**RING LOCK | LEVEL LOCK INSERT**

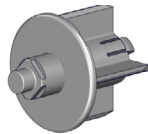
|      |         |
|------|---------|
| CODE | STSLILP |
| PACK | 1       |



COLOR. Clear

**SKYLINE PIN END**

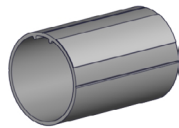
|      |          |
|------|----------|
| CODE | SLPEV03W |
| PACK | 25       |



COLOR. White (W)

**ALUMINUM TUBE | 1-1/4"**  
No Tape | 92" Length

|      |            |
|------|------------|
| CODE | RTEA3U92IN |
| PACK | 10         |



**25MM MOTOR CROWN & DRIVE | 1-1/4" TUBE**

|      |                  |
|------|------------------|
| CODE | MT03-0109-069003 |
| PACK | 10               |



COLOR. Pure White (069)

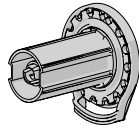
**TUBE CLIP**

|      |         |
|------|---------|
| CODE | RRTC125 |
| PACK | 25      |



**SL20 CLUTCH**

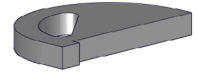
|      |          |
|------|----------|
| CODE | SL20H53W |
| PACK | 25       |



COLOR. White (W)

**RING LOCK | LEVEL LOCK INSERT**

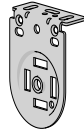
|      |         |
|------|---------|
| CODE | STSLILP |
| PACK | 1       |



COLOR. Clear

**LX SKYLINE BRACKET**

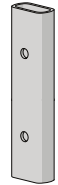
|      |                  |
|------|------------------|
| CODE | SL01-0306-069040 |
| PACK | 50               |



COLOR. Pure White (069)

**CHAIN SHIELD**

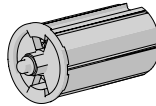
|      |                  |                  |
|------|------------------|------------------|
| TYPE | 8"               | 20"              |
| CODE | RB91-1346-001020 | RB91-1346-001051 |
| PACK | 10               | 10               |
| TYPE | 32"              | 44"              |
| CODE | RB91-1346-001081 | RB91-1346-001112 |
| PACK | 10               | 10               |



COLOR. Clear (001)

**SKYLINE HEAVY DUTY PIN END**

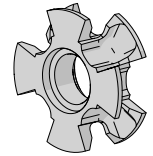
|      |           |
|------|-----------|
| CODE | SLPEHD53W |
| PACK | 25        |



COLOR. White (W)

**CHAIN SHIELD WHEEL - NATURAL**

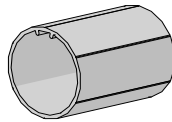
|      |                  |
|------|------------------|
| CODE | RB91-1346-060002 |
| PACK | 25               |



COLOR. Natural (060)

**ALUMINUM TUBE | 1-1/2"**  
No Tape | 92" Length

|      |            |
|------|------------|
| CODE | RTEA4U92IN |
| PACK | 8          |



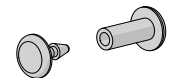
**TUBE CLIP**

|      |        |
|------|--------|
| CODE | RRTC15 |
| PACK | 25     |



**CHAIN SHIELD BINDING POST SET - CLEAR**

|      |                  |
|------|------------------|
| CODE | RB91-1346-001003 |
| PACK | 25               |



COLOR. Clear (001)

**SAFETY RING LOCK**

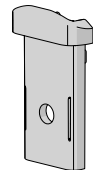
|      |            |
|------|------------|
| TYPE | 1.4mm Cord |
| CODE | STSRL      |
| PACK | 1          |



COLOR. Clear

**CHAIN SHIELD FUNNEL - CLEAR**

|      |                  |
|------|------------------|
| CODE | RB91-1346-001001 |
| PACK | 50               |



COLOR. Clear (001)

**RING LOCK | FOREVER RING**

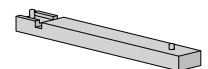
|      |        |
|------|--------|
| CODE | STSFRR |
| PACK | 1      |



COLOR. Clear

**CHAIN SHIELD SPACING JIG**

|      |                  |
|------|------------------|
| CODE | TM91-1346-000002 |
| PACK | 1                |



**5V ZERO LI-ION 2.0NM CT15 Q MT [Ø28/5V/28RPM](SKY)**

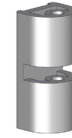
|      |                     |
|------|---------------------|
| CODE | MT01-1328-069008-CT |
| PACK | 15                  |



COLOR. Pure White (069)

**SAFETY RING LOCK**

|      |            |
|------|------------|
| TYPE | 1.4mm Cord |
| CODE | STSRL      |
| PACK | 1          |



COLOR. Clear

**5V RECHARGABLE BATTERY PACK 2600MAH**

|      |                  |
|------|------------------|
| CODE | MT03-0305-069003 |
| PACK | 1                |



COLOR. Pure White (069)

**RING LOCK | FOREVER RING**

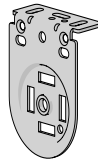
|      |       |
|------|-------|
| CODE | STSFR |
| PACK | 1     |



COLOR. Clear

**LX SKYLINE BRACKET**

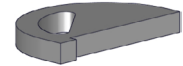
|      |                  |
|------|------------------|
| CODE | SL01-0306-069040 |
| PACK | 50               |



COLOR. Pure White (069)

**LEVEL LOCK INSERT (PACK OF 100)**

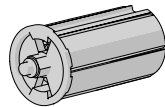
|      |         |
|------|---------|
| CODE | STSLILP |
| PACK | 1       |



COLOR. Clear

**SKYLINE HEAVY DUTY PIN END**

|      |           |
|------|-----------|
| CODE | SLPEHD53W |
| PACK | 25        |



COLOR. White (W)

**28MM MOTOR CROWN & DRIVE | 1-1/2" TUBE WITH CLIP**

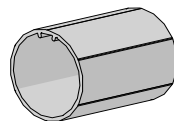
|      |                  |
|------|------------------|
| CODE | MT03-0110-069002 |
| PACK | 10               |



COLOR. Pure White (069)

**ALUMINUM TUBE | 1-1/2"**  
No Tape | 92" Length

|      |            |
|------|------------|
| CODE | RTEA4U92IN |
| PACK | 8          |



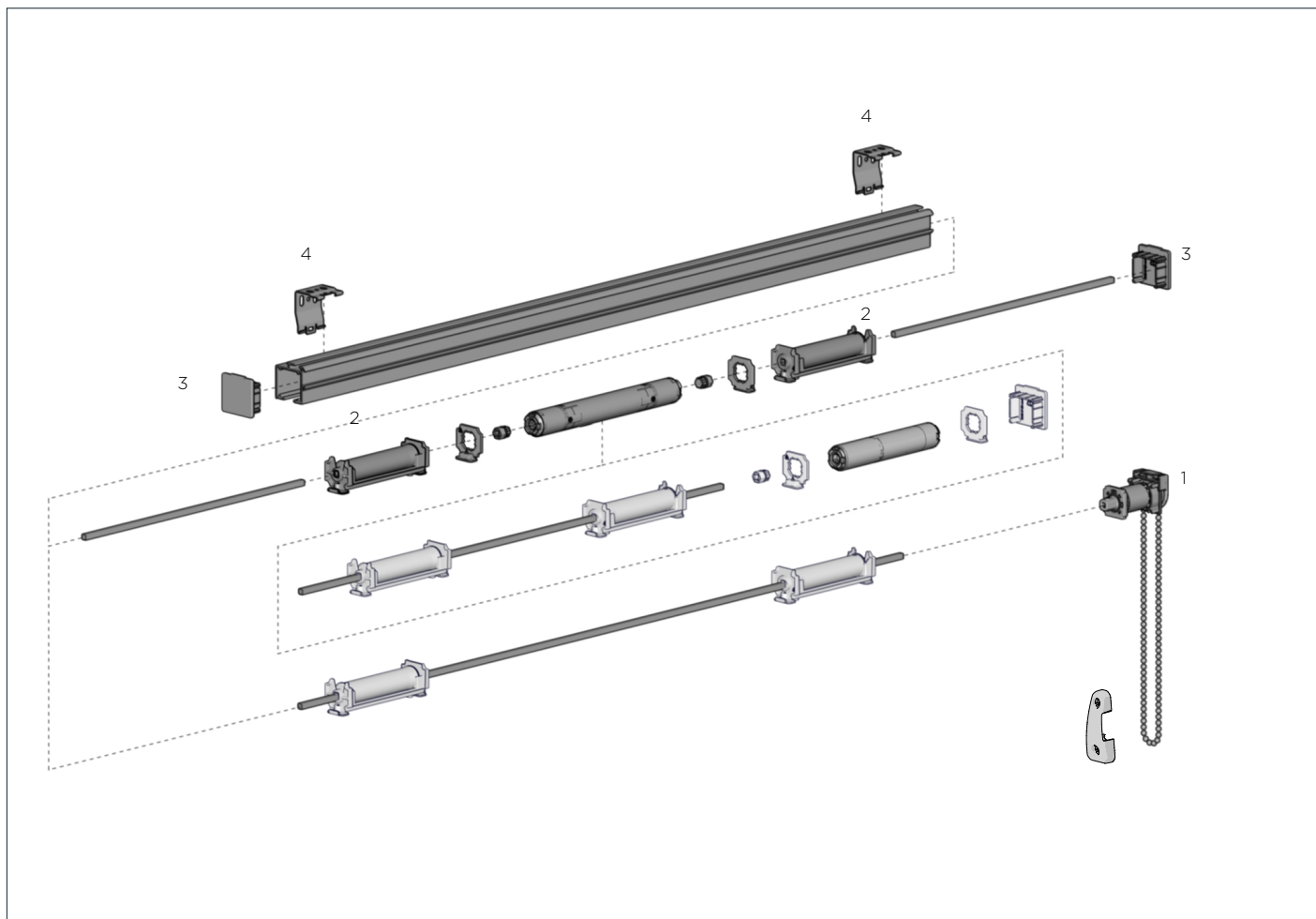
**TUBE CLIP**

|      |        |
|------|--------|
| CODE | RRTC15 |
| PACK | 25     |



.....

**This page has been left blank intentionally**



COLOR RANGE



Pure White

COMPATIBLE AUTOMATE™ MOTORS

AUTOMATE™ Cord Lift Motor

PRODUCT OPTIONS

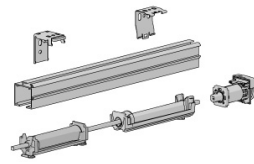
AUTOMATE™ MOTORIZATION

p.117



SYSTEM UPGRADES

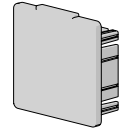
**SS38 READY MADE SYSTEM WITH DIRECT DRIVE**



|      |                  |                  |                  |
|------|------------------|------------------|------------------|
| TYPE | 3' (0.9m)        | 4' (1.2m)        | 5' (1.5m)        |
| CODE | SS38-9411-069090 | SS38-9411-069120 | SS38-9411-069150 |
| PACK | 8                | 8                | 8                |

COLOR. Pure White (069)

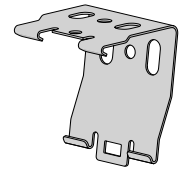
**SS38 HEAD RAIL END CAP**



|      |                  |
|------|------------------|
| CODE | SS38-0120-069040 |
| PACK | 25               |

COLOR. Pure White (069)  
USE WITH. SS38 Aluminum Profile

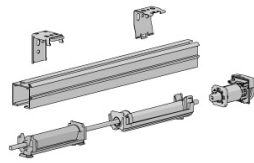
**SS38 LOW PROFILE MOUNTING CLIP**



|      |                  |
|------|------------------|
| CODE | SS38-0212-069034 |
| PACK | 50               |

COLOR. Pure White (069)  
USE WITH. SS38 Aluminum Profile

**SS38 READY MADE SYSTEM WITH PLANETARY DRIVE**



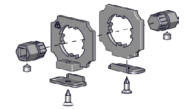
|      |                  |
|------|------------------|
| TYPE | 7' (2.1m)        |
| CODE | SS38-9421-069210 |
| PACK | 8                |

|      |                  |                  |
|------|------------------|------------------|
| TYPE | 11' (3.3m)       | 13' (3.9m)       |
| CODE | SS38-9421-069330 | SS38-9421-069390 |
| PACK | 8                | 8                |

COLOR. Pure White (069)

**CORD LIFT MOTOR ADAPTER KIT | SS38**

Includes Motor Adapters, Clamps, Screws and Shaft Adapters



|      |                 |
|------|-----------------|
| CODE | MTAD-CLHRSS38KT |
| PACK | 10              |

COLOR. White  
USE WITH. MTDCRF-CL-0.6-50 Cord Lift & MT01-3001-069001 Double Shaft Motor

**10MM ACM FLAT SPLINE - WITH DOUBLE SIDED TAPE**

Double Sided MP-HR TAPE - 246 Ft. (75Lm) Roll

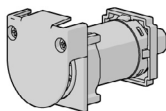


|      |                  |
|------|------------------|
| TYPE | Two Sides        |
| CODE | RB92-1003-001075 |
| PACK | 1                |

COLOR. Clear (001)  
USE WITH. SS38 Aluminum Profile

**SS38 DIRECT DRIVE**

5mm Square



|      |                  |
|------|------------------|
| CODE | SS38-0411-069051 |
| PACK | 25               |

COLOR. Pure White (069)  
USE WITH. SS38 Aluminum Profile, Metal Rod 5mm Square, Rotation Chain

**TOUCH TAPE SEW-ON | LOOP 25MM (0.98")**

1 Roll = 25Lm (27.34 yd)

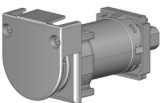


|      |                  |
|------|------------------|
| CODE | HD31-0125-060025 |
| PACK | 1                |

COLOR. White (060)  
USE WITH. Crimped Touch Tape HOOK on SS38 Aluminum Profile

**SS38 PLANETARY DRIVE**

5mm Square

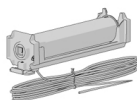


|      |                  |
|------|------------------|
| CODE | SS38-0420-069051 |
| PACK | 25               |

COLOR. Pure White (069)  
USE WITH. SS38 Aluminum Profile, Metal Rod 5mm Square

**SS38 STANDARD SPOOL | 13FT (4M) CORD**

+ Fixing clamps - 5mm Square

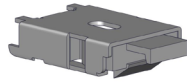


|      |                  |
|------|------------------|
| TYPE | Standard         |
| CODE | SS38-8341-580451 |
| PACK | 25               |

COLOR. White (580)  
USE WITH. SS38 Aluminum Profile, Metal Square Rod

**MOUNTING BRACKETS FOR HEADRAIL**

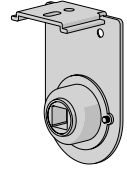
|      |           |
|------|-----------|
| CODE | RE0080200 |
| PACK | 100       |



COLOR. Silver

**BRACKET WITH SIDE ADJUSTER FOR SINGLE SHADES**

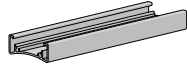
|      |           |
|------|-----------|
| CODE | RE0084610 |
| PACK | 50        |



COLOR. White (W)

**EASY SPRING PLUS | SINGLE HEADRAIL SYSTEM**

|      |           |
|------|-----------|
| CODE | RE0080110 |
| PACK | 12        |



COLOR. White (W)

**TUBE CLIP**

|      |        |
|------|--------|
| CODE | RRTC15 |
| PACK | 25     |



**EASY SPRING PLUS | LH SPRING | 1-1/2" (38MM)**

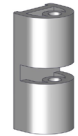


|      |             |             |
|------|-------------|-------------|
| TYPE | 1.2 x 300mm | 1.5 x 450mm |
| CODE | RE0080400   | RE0080500   |
| PACK | 25          | 25          |
| TYPE | 1.7 x 550mm | 1.1 x 180mm |
| CODE | RE0084400   | RE0084910   |
| PACK | 25          | 25          |

COLOR. White (W)

**SAFETY RING LOCK**

|      |            |
|------|------------|
| TYPE | 1.4mm Cord |
| CODE | STSRL      |
| PACK | 1          |



COLOR. Clear

**RING LOCK | FOREVER RING**

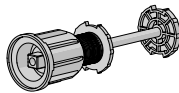
|      |       |
|------|-------|
| CODE | STSFR |
| PACK | 1     |



COLOR. Clear

**EASY SPRING PLUS | RH STOP | 1-1/2" (38MM)**

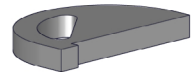
|      |           |
|------|-----------|
| CODE | RE0084810 |
| PACK | 25        |



COLOR. White (W)

**RING LOCK | LEVEL LOCK INSERT**

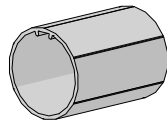
|      |         |
|------|---------|
| CODE | STSLILP |
| PACK | 1       |



COLOR. Clear

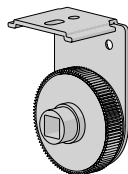
**ALUMINUM TUBE | 1-1/2"**  
12 ft. Length

|      |          |
|------|----------|
| CODE | RTEA4U12 |
| PACK | 8        |



**BRACKET WITH ADJUSTER WHEEL FOR SINGLE SHADES**

|      |           |
|------|-----------|
| CODE | RE0080710 |
| PACK | 50        |



COLOR. White

**RING LOCK | FOREVER RING**

|      |        |
|------|--------|
| CODE | STSFRR |
| PACK | 1      |



**SAFETY RING LOCK**

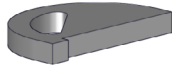
|      |            |            |
|------|------------|------------|
| TYPE | 1.4mm Cord | 0.9mm Cord |
| CODE | STSRLL     | STSRLL09   |
| PACK | 1          | 1          |



COLOR. Clear

**RING LOCK | LEVEL LOCK INSERT**

|      |          |
|------|----------|
| CODE | STSLLLIP |
| PACK | 1        |



**ROMAN BAR SLEEVE & ROD**



|      |        |
|------|--------|
| TYPE | 16 ft. |
| CODE | RRBR16 |
| PACK | 40     |

**ROMAN BAR END CAP**



|      |       |
|------|-------|
| CODE | RRBEC |
| PACK | 500   |

**ROMAN BAR TUBE**



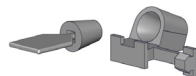
|      |        |
|------|--------|
| TYPE | 16 ft. |
| CODE | RRBT16 |
| PACK | 300    |

**ROMAN BAR BOTTOM POCKET PLUG**



|      |       |
|------|-------|
| CODE | RRBBP |
| PACK | 100   |

**ROMAN BAR BOTTOM RING SET**



|      |        |
|------|--------|
| CODE | RRBBRS |
| PACK | 100    |

**ROMAN BAR CORD GUIDE**



|      |       |
|------|-------|
| CODE | RRBCG |
| PACK | 500   |

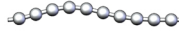
**ROMAN BAR CORD GUIDE HOBBLING**



|      |         |
|------|---------|
| CODE | RRBCGH2 |
| PACK | 500     |

**#10 METAL BEAD CHAIN**

500 ft.

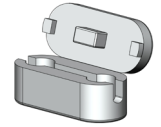


|      |        |         |          |
|------|--------|---------|----------|
| CODE | RBC45M | RBC45AB | RBC45MSS |
| PACK | 1      | 1       | 1        |

COLOR. Antique Brown or Brass (AB), Nickel over Steel (M), Stainless Steel (SS)

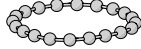
**PLASTIC CHAIN CONNECTOR**

|      |      |
|------|------|
| CODE | RCPx |
| PACK | 100  |



COLOR. Black (BK), Brown (BR), Clear (C), Gray (G), Vanilla (V), White (W)

**#10 METAL BEAD CHAIN LOOP**



|      |        |        |        |
|------|--------|--------|--------|
| TYPE | 3 ft.  |        |        |
| CODE | RBC03M |        |        |
| PACK | 10     |        |        |
| TYPE | 4 ft.  | 5 ft.  | 6 ft.  |
| CODE | RBC04M | RBC05M | RBC06M |
| PACK | 10     | 10     | 10     |

COLOR. Nickel over Steel

**5/16" OPEN METAL STOP BALL**

|      |       |         |
|------|-------|---------|
| CODE | RCMSB | RCMSBAB |
| PACK | 100   | 100     |



COLOR. Nickel Plated Brass (SB), Antique Brown (AB)

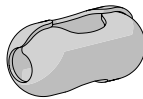
**PLASTIC CHAIN STOP BALL**

|      |               |             |
|------|---------------|-------------|
| TYPE | With Shoulder | No Shoulder |
| CODE | RCPSB         | RCPSBC      |
| PACK | 500           | 500         |



COLOR. Clear

**CRIMP CONNECTOR | METAL CHAIN**

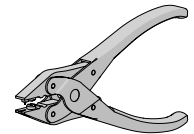


|      |                   |                  |                      |
|------|-------------------|------------------|----------------------|
| TYPE | Nickel over Steel | Stainless Steel  | Colors - refer below |
| CODE | VA01-1522-024000  | VA01-1522-010000 | VA01-1522-xxx000     |
| PACK | 100               | 100              | 100                  |

COLOR. Antique Bronze (476), Brass (043), Black (050)

**COMBINATION PLIERS/CRIMPING #10 METAL BEAD CHAIN**

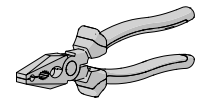
|      |                  |
|------|------------------|
| CODE | TM10-0291-000045 |
| PACK | 1                |



COLOR. Cast Steel (000)

**CHAIN CUTTING/CRIMPING PLIERS #10 Metal Bead Chain**

|      |                  |
|------|------------------|
| CODE | TM10-0292-000045 |
| PACK | 1                |

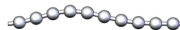


COLOR. Cast Steel (000)

**6MM PITCH PLASTIC CHAIN**

820 ft. roll

|      |          |
|------|----------|
| CODE | RBC6MMxx |
| PACK | 1        |

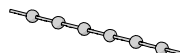


COLOR. Black (BK), Brown (BR), Clear (C), Vanilla (V), White (W)

**12MM PITCH PLASTIC CHAIN**

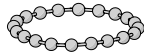
820 ft. roll

|      |        |
|------|--------|
| CODE | RBC8xx |
| PACK | 1      |



COLOR. Black (BK), Gray (G), Vanilla (V), White (W)

**6MM PLASTIC CHAIN LOOP**



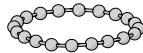
|      |               |               |               |
|------|---------------|---------------|---------------|
| TYPE | 2 ft. (0.62m) | 3 ft. (0.92m) | 4 ft. (1.23m) |
| CODE | RBC02P6xx     | RBC03P6xx     | RBC04P6xx     |
| PACK | 10            | 10            | 10            |

|      |               |               |               |
|------|---------------|---------------|---------------|
| TYPE | 5 ft. (1.54m) | 6 ft. (1.85m) | 7 ft. (2.15m) |
| CODE | RBC05P6xx     | RBC06P6xx     | RBC07P6xx     |
| PACK | 10            | 10            | 10            |

|      |               |
|------|---------------|
| TYPE | 8 ft. (2.44m) |
| CODE | RBC08P6xx     |
| PACK | 10            |

COLOR. Black (BK), Vanilla (V), White (W)

**CHAIN LOOP | #10 | STAINLESS STEEL**



|      |                      |                      |                      |
|------|----------------------|----------------------|----------------------|
| TYPE | Chain Loop 1 ft. #10 | Chain Loop 2 ft. #10 | Chain Loop 3 ft. #10 |
| CODE | VA01-1405-010025     | VA01-1405-010050     | VA01-1405-010075     |
| PACK | 10                   | 10                   | 10                   |

|      |                      |                      |                      |
|------|----------------------|----------------------|----------------------|
| TYPE | Chain Loop 4 ft. #10 | Chain Loop 5 ft. #10 | Chain Loop 6 ft. #10 |
| CODE | VA01-1405-010100     | VA01-1405-010125     | VA01-1405-010150     |
| PACK | 10                   | 10                   | 10                   |

|      |                      |                      |                      |
|------|----------------------|----------------------|----------------------|
| TYPE | Chain Loop 7 ft. #10 | Chain Loop 8 ft. #10 | Chain Loop 9 ft. #10 |
| CODE | VA01-1405-010175     | VA01-1405-010200     | VA01-1405-010225     |
| PACK | 10                   | 10                   | 10                   |

|      |                       |                       |                       |
|------|-----------------------|-----------------------|-----------------------|
| TYPE | Chain Loop 10 ft. #10 | Chain Loop 11 ft. #10 | Chain Loop 12 ft. #10 |
| CODE | VA01-1405-010250      | VA01-1405-010275      | VA01-1405-010300      |
| PACK | 10                    | 10                    | 10                    |

COLOR. Stainless Steel (010)

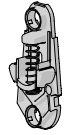
**CHAINHOLD COVER**



|      |                  |
|------|------------------|
| CODE | RB91-1336-001000 |
| PACK | 200              |

COLOR. Black (050), Clear (001), Gray (331), Vanilla (414), White (075)  
 USE WITH. Chainhold base assembly

**CHAINHOLD BASE ASSEMBLY**

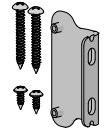


|      |                  |
|------|------------------|
| CODE | RB91-1337-001000 |
| PACK | 200              |

COLOR. Black (050), Clear (001), Gray (331), Vanilla (414), White (075)  
 USE WITH. Chainhold cover

**CHAINHOLD KIT**

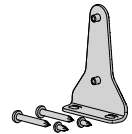
Bracket & screws



|      |                  |
|------|------------------|
| CODE | RB91-1338-001110 |
| PACK | 200              |

COLOR. Clear (001)

**CHAINHOLD FLOOR FIX KIT**

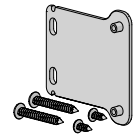


|      |                  |
|------|------------------|
| CODE | RB91-1338-001210 |
| PACK | 200              |

COLOR. Clear (001)

**CHAINHOLD SIDE FIX KIT**

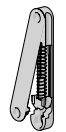
Bracket & screws



|      |                  |
|------|------------------|
| CODE | RB91-1338-001310 |
| PACK | 200              |

COLOR. Clear (001)

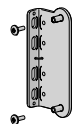
**FLEX CHAINHOLD**



|      |                  |
|------|------------------|
| CODE | RB91-1361-xxx000 |
| PACK | 200              |

COLOR. Frosted Clear (004), Black (050), Pure White (069)

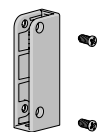
**FLEX CHAINHOLD OUTSIDE MOUNTING KIT | FROSTED CLR**



|      |                  |
|------|------------------|
| CODE | RB91-1363-004000 |
| PACK | 200              |

COLOR. Frosted Clear (004)  
 USE WITH. Flex Chainhold

**FLEX CHAINHOLD FLOOR MOUNT KIT | FROSTED CLEAR**



|      |                  |
|------|------------------|
| TYPE | Screw-down       |
| CODE | RB91-1364-004000 |
| PACK | 200              |

COLOR. Frosted Clear (004)  
 USE WITH. Flex Chainhold

**FLEX CHAINHOLD ADHESIVE BRACKET KIT | FROSTED CLR**

|      |                  |
|------|------------------|
| CODE | RB91-1366-004000 |
| PACK | 1                |



COLOR. Frosted Clear (004)  
 USE WITH. Flex Chainhold

**FLEX CORDHOLD**

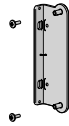
|      |                  |
|------|------------------|
| CODE | RB91-1362-xxx000 |
| PACK | 200              |



COLOR. Frosted Clear (004), Black (050), Pure White (069)

**FLEX CORDHOLD OUTSIDE MOUNTING KIT | FROSTED CLR**

|      |                  |
|------|------------------|
| CODE | RB91-1365-004000 |
| PACK | 200              |



COLOR. Frosted Clear (004)  
 USE WITH. Flex Cordhold

**FLEX CHAINHOLD & CORDHOLD | TENSION SPACER**

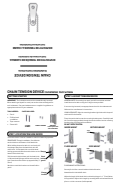
|      |                  |
|------|------------------|
| CODE | RB91-1399-503001 |
| PACK | 50               |



COLOR. Orange (503)  
 USE WITH. Flex Chainhold, Flex Cordhold

**CHAINHOLD INSTRUCTIONS BK110 (200PCS)**

|      |                  |
|------|------------------|
| CODE | MK04-INST-133101 |
| PACK | 200              |



USE WITH: Chainhold Kit

**CHAINHOLD INSTRUCTIONS BK110-210-310 (200PCS)**

|      |                  |
|------|------------------|
| CODE | MK04-INST-133102 |
| PACK | 200              |



USE WITH: Chainhold Kit, Chainhold Floor Kit, Chainhold Side Fix Kit

**TENSION DEVICE TAG 5.2.1 (2022)**

|      |                  |
|------|------------------|
| TYPE | 5.2.2 (2022)     |
| CODE | HD91-0106-000001 |
| PACK | 100              |



**BOTTOM RAIL TD LABEL 5.1.1 (2022), ROLL OF 250**

|      |                  |
|------|------------------|
| TYPE | 5.1.1 (2022)     |
| CODE | HD91-0122-xxx001 |
| PACK | 250              |



**BOTTOM RAIL TD LBL 5.1.2 (2022), ROLL OF 250, LONG**

|      |                  |
|------|------------------|
| TYPE | 5.1.1 (2022)     |
| CODE | HD91-0122-000002 |
| PACK | 250              |

