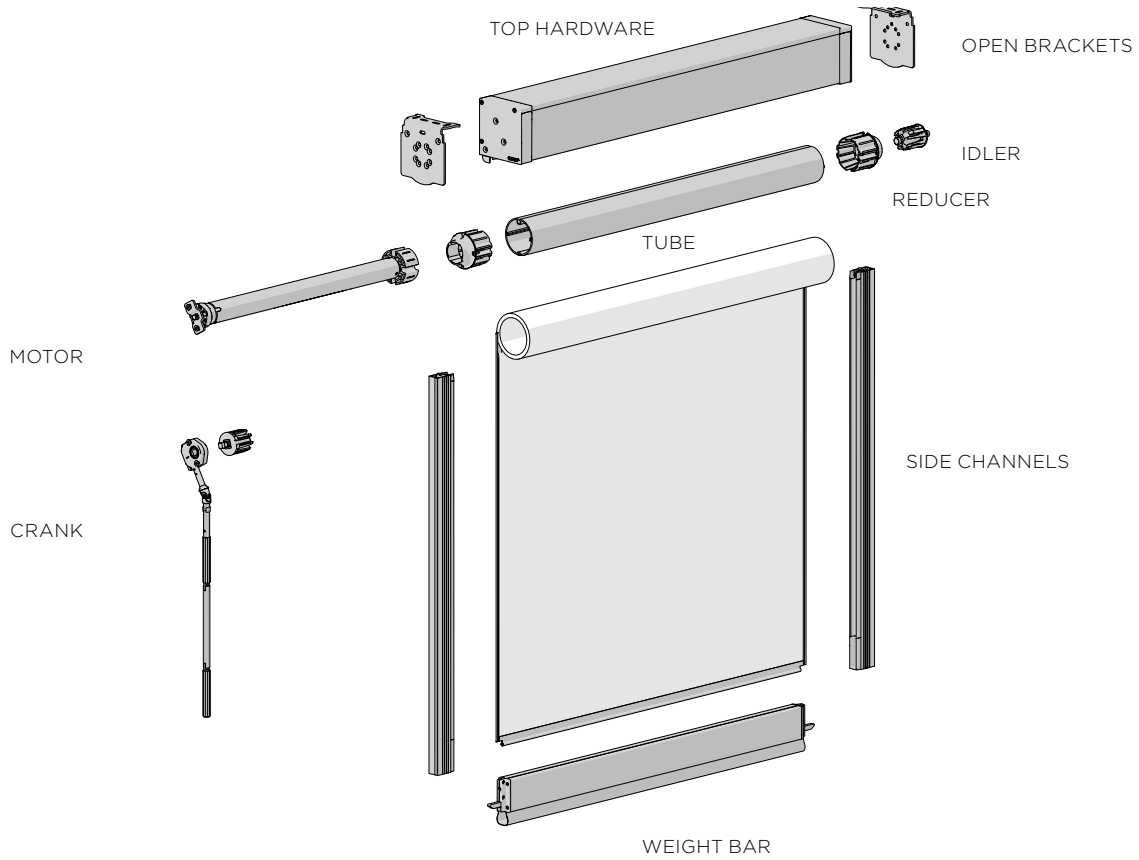


# OUTDOORS

Section 1	Core Hardware	
	Box Cassettes	101
	Open Brackets	104
	Controls	105
	Tubes	108
	Weight Bars	110
Section 2	Side Guide Options	
	Zipscreen	112
	Wire Guide	113

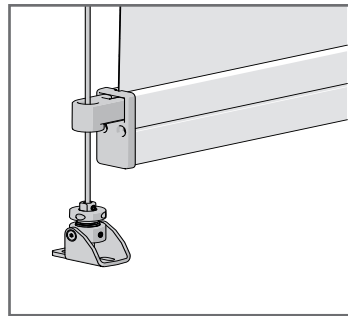
# OVERVIEW



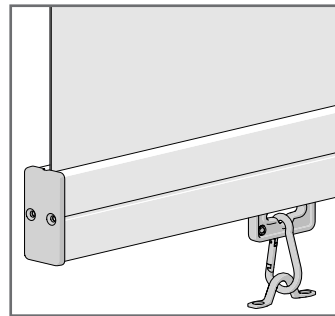
## COLOR RANGE



## SYSTEM OPTIONS



WIRE GUIDE



STRAIGHT DROP

SYSTEM	TOP HARDWARE				TUBES				CONTROLS		W.BARS	
	BOX 120	BOX 160	BOX 190	OPEN	78MM	110MM	130MM	160MM	CRANK	MOTOR	F56	F72
ZIPSCREEN	✓	✓	✓	✓	✓	✓	✓		✓	✓	✓	✓
WIRE GUIDE	✓	✓	✓	✓	✓	✓	✓	✓	✓	✓	✓	✓
STRAIGHT DROP	✓	✓	✓	✓	✓	✓	✓		✓	✓	✓	✓

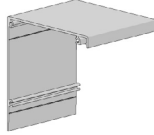
**CASSETTE**

BOX 120

**BOX 120 | BACK COVER**

19ft (5.8m) Piece

TYPE	Mill (000)	Colors - refer below
CODE	RE01-0101-000580	RE01-0101-xxx580
PACK	1	1



COLOR. Refer to color range on system overview page  
 USE WITH. Box 120 Covers & Box 120 End Plate Set

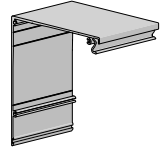
**CASSETTE**

BOX 160

**BOX 160 | TOP/BACK COVER**

22.9ft (7m) Piece

TYPE	Mill (000)	Colors - refer below
CODE	RE01-0111-000700	RE01-0111-xxx700
PACK	2	2

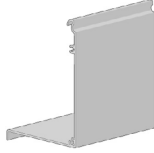


COLOR. Txd Black (150), Txd White (169), Txd Bronze (180)  
 USE WITH. Box 160 Front Cover, Box 160 End Plate Set

**BOX 120 | FRONT COVER (FULL)**

19ft (5.8m) Piece

TYPE	Mill (000)	Colors - refer below
CODE	RE01-0102-000580	RE01-0102-xxx580
PACK	2	2

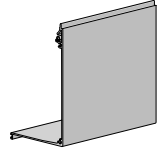


COLOR. Refer to color range on system overview page  
 USE WITH. Box 120 Back, Box 120 End Plate Set

**BOX 160 | FRONT COVER W/ BUBBLE**

22.9ft (7m) Piece

TYPE	Mill (000)	Colors - refer below
CODE	RE01-0113-000700	RE01-0113-xxx700
PACK	2	2

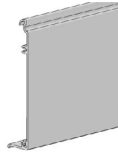


COLOR. Txd Black (150), Txd White (169), Txd Bronze (180)  
 USE WITH. Box 160 Top/Back Cover, Box 160 End Plate Set

**BOX 120 FRONT COVER | SEMI-FASCIA**

19ft (5.8m) Piece

TYPE	Mill (000)	Colors - refer below
CODE	RE01-0103-000580	RE01-0103-xxx580
PACK	4	4

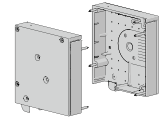


COLOR. Refer to color range on system overview page  
 USE WITH. Box 120 Back, Box 120 End Plate Set

**BOX 160 | END PLATE SET**

LH & RH

TYPE	Mill (000)	Colors - refer below
CODE	RE01-1106-000160	RE01-1106-xxx160
PACK	2	2

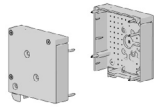


COLOR. Txd Black (150), Txd White (169), Txd Bronze (180)  
 USE WITH. Box 160 Top/Back Cover, Box 160 Front Cover

**BOX 120 | END PLATE SET**

LH & RH

TYPE	Mill (000)	Colors - refer below
CODE	RE01-1101-000120	RE01-1101-xxx120
PACK	2	4

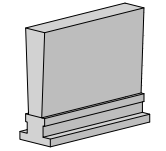


COLOR. Refer to color range on system overview page  
 USE WITH. Box 120 Back, Box 120 Full Cover, Box 120 Fascia

**FABRIC BRUSH T-SLOT**

13mm x 4.8mm | 400m Roll

CODE	SB91-0022-050400
PACK	400

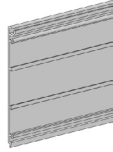


COLOR. Black (050)  
 USE WITH. Box 160 Top/Back Cover, Box 160 Front Cover

**BOX 190 | UNIVERSAL EXTRUSION**

22.9ft (7m) Piece

TYPE	Mill (000)	Colors - refer below
CODE	RE01-0106-000700	RE01-0106-xxx700-PF
PACK	1	1

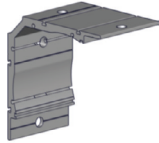


COLOR. Txd Black (150), Txd White (169)  
 USE WITH. Box 190 Front Cover, Box 190 Two-Side End Plate Set

**BOX 190 | UNIVERSAL BRACKET EXTRUSION**

X4" (100MM)

CODE	RE01-1105-020100
PACK	2

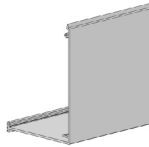


COLOR. Anodized (020)  
 USE WITH. Box 190 Universal Extrusion

**BOX 190 | FRONT COVER**

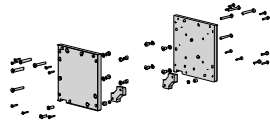
22.9ft (7m) Piece

TYPE	Mill (000)	Colors - refer below
CODE	RE01-0107-000700	RE01-0107-xxx700-PF
PACK	1	1



COLOR. Txd Black (150), Txd White (169)  
 USE WITH. Box 190 Universal Extrusion, Box 190 Two-Side End Plate Set

**BOX 190 | TWO-SIDE END PLATE SET**

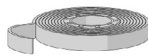


TYPE	Mill (000)	Colors - refer below
CODE	RE01-1105-000001	RE01-1105-xxx001
PACK	1	1

COLOR. Txd Black (150), Txd White (169)  
 USE WITH. Box 190 Universal Extrusion & Brkt, Brkt adapters, Wire Guide adapter plate

**FOAM TAPE**

TYPE	0.063" x 0.354"
CODE	SB91-0516-050009
PACK	45

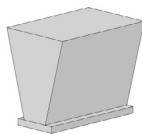


COLOR. Black (050)  
 USE WITH. Box 190 Universal Extrusion, Box 190 Front Cover

**FABRIC BRUSH | T-SLOT FIT**

10m x 4.8mm | 200m Roll

CODE	SB91-0012-050300
PACK	200

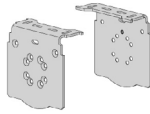


COLOR. Black (050)  
 USE WITH. Box 190 Front Cover, Universal Bracket Extrusion

## OPEN BRACKETS

### OPEN BRACKETS | SQUARE | 78MM

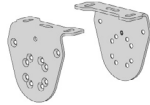
Type	Stainless Steel*	Colors - refer below
CODE	RE01-3031-012000	RE01-3030-xxx000
PACK	16	2



COLOR. Refer to color range on system overview page - Silver Zinc Plated (025)  
also available  
USE WITH. Open Bracket Cover

### OPEN BRACKETS | ROUND | 78MM

TYPE	Stainless Steel	Color - refer below
CODE	RE01-3021-012000	RE01-3020-xxx000
PACK	2	2

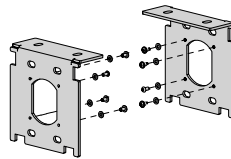


COLOR. Refer to color range on system overview page - Silver Zinc Plated (025)  
also available  
USE WITH. Open Bracket Cover

### ZIPSCREEN | OPEN BRACKET KIT | S100

Universal + Screws

TYPE	Polished SS
CODE	SB03-1301-009190
PACK	1

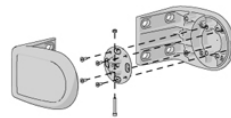


COLOR. Polished Stainless Steel (009)  
USE WITH. S100 Square Bracket Plates

### OUTSIDE/WALL MOUNT BRACKET SET | S100

& adapter

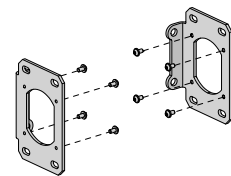
CODE	RB80-1201-xxx109
PACK	1



COLOR. Pure White (069), Black (050)  
USE WITH. Zamak Adapter, S100 Bearing Idler

### INSIDE MOUNT BRACKET KIT | MOTOR | S100

CODE	RB80-0478-xxx100
PACK	1



COLOR. Black (050), Pure White (069)  
USE WITH. S100 Bracket Adapter Kit

**CRANK OPERATION GEAR | RATIO 5:1**

with fixing screws

TYPE	Mill (000)	Color
CODE	RE01-0513-000003	RE01-0513-050003
PACK	5	5



COLOR. Black (050)

USE WITH. Crank Housing, Box 120 End Plate Set, Open Brackets

**CRANK OPERATION GEAR | RATIO 8:1**

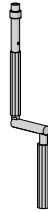
with fixing screws

TYPE	Mill	Color
CODE	RE01-0517-000003	RE01-0517-050003
PACK	5	5



COLOR. Black (050)

USE WITH. Crank Housing, Box 120 End Plates, Open Brackets

**GEAR/CRANK OPERATION CONTROL ARM**

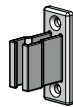
SIZE	3.2ft (100cm)	4.9ft (150cm)	6.5ft (200cm)
CODE	RB05-9101-340100	RB05-9101-340150	RB05-9101-340200
PACK	5	5	5

COLOR. Gray (340)

USE WITH. Crank Operation Gear, Gear/Crank Operation Arm Support

**GEAR/CRANK OPERATION ARM SUPPORT**

CODE	RB05-9102-xxx000
PACK	5

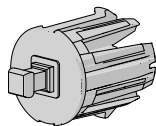


COLOR. Pure White (069), Gray (340)

USE WITH. Gear/Crank Operation Control Arm

**CRANK ADAPTER | 45MM**

CODE	RE01-0502-050045
PACK	5

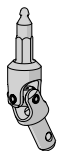


COLOR. Black (050)

USE WITH. Crank Operation Gear, 45mm reducer, 45mm to 78mm Crown

**RE01 GEAR | UNIVERSAL JOINT**

CODE	RE01-0510-020000
PACK	10



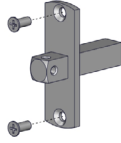
COLOR. Anodized (020)

USE WITH. Crank Operation Gear, Crank Operation Control Arm

## AUTOMATE 45MM SLIM MOTOR 10MM SQ. SHAFT

TYPE	45mm
CODE	RE01-0603-025000
PACK	1

COLOR. Silver Zinc Plated (025)  
USE WITH. Automate Bracket Adapter



## AUTOMATE | 78MM DRIVE SINGLE PIECE

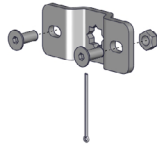
TYPE	78mm
CODE	MT03-0106-050006
PACK	5

COLOR. Black (050)

AUTOMATE 45MM MOTOR BRACKET ADAPTER  
+ screws

TYPE	45mm
CODE	RE01-0601-025000
PACK	5

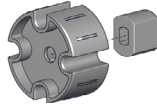
COLOR. Silver Zinc Plated (025)  
USE WITH. Automate 10mm Sq. Shaft



## AUTOMATE | 78MM DRIVE WHEEL | IMPACT DETECT

TYPE	78mm
CODE	RE01-0680-050518
PACK	5

COLOR. Black (050)  
USE WITH. Automate FT Motor, 78mm Tube



## AUTOMATE REMOTES



TYPE	Push 15	Push 5	Push 1
CODE	MT02-0101-xxx008	MT02-0101-xxx004	MT02-0101-xxx010
PACK	1	1	1
TYPE	Push PRO		
CODE	MT02-0101-xxx013		
PACK	1		

COLOR. Black (050), White (067)

## DRIVE CLIP FOR 35/45MM MOTOR

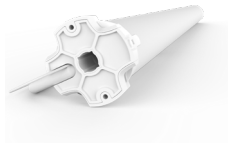
TYPE	35/45mm
CODE	MTCLIP-35-45
PACK	100



## 15NM FT ACRF MOTOR [Ø45/110V/32RPM] 10' CORD PLUG

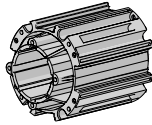
TYPE	45mm/15Nm/32r   Quiet
CODE	MT01-1145-069003
PACK	1

COLOR. Pure White (069)  
USE WITH. 78mm tubes, 78mm Automate Drive & Crown Wheel



**CROWN WHEEL | S100**

CODE	RB80-0701-073100
PACK	1

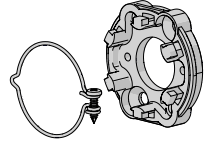


COLOR. Gray Cloud (073)  
USE WITH. AX Motors, Aluminum Tube S100-100STD & 130HD

**UNIVERSAL ZAMAK ADAPTER WITH LOCK RING**

Threaded

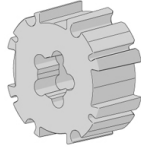
CODE	RB56-0766-014050
PACK	1



COLOR. Cast Silver (014)  
USE WITH. Box 160, AX Motors, 110mm Aluminum tubes

**DRIVE WHEEL | S100**

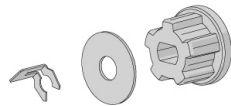
CODE	RB80-0301-073100
PACK	1



COLOR. Gray Cloud (073)  
USE WITH. Drive Wheel Adaptor, Aluminum Tube S100-100STD & 130HD

**AUTOMATE | AX MOTOR DRIVE ADAPTOR KIT**

CODE	MT03-0198-025008
PACK	1



COLOR. Silver Zinc Plated (025)  
USE WITH. AX Motor, S100 Drive Wheel

**AUTOMATE | AX30 ARC MOTOR [Ø45/110V/13RPM] LC**

CODE	MT01-1145-069018
PACK	1



COLOR. Pure White (069)  
USE WITH. S100 Crown & Drive, Drive Wheel Adaptor

**AUTOMATE | AX50 ARC MOTOR [Ø45/110V/13RPM] LC**

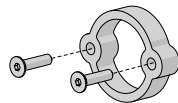
CODE	MT01-1145-069017
PACK	1



COLOR. Pure White (069)  
USE WITH. S100 Crown & Drive, Drive Wheel Adaptor

**BOX 160 | MOTOR SPACER W/ SCREWS**

CODE	RE01-0216-018000
PACK	4

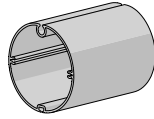


COLOR. Anodized (018)  
USE WITH. Box 160 (Zipscreen), AX Motors, 110mm Aluminum tubes

**ALUMINUM TUBE | 78MM**

19ft (5.8m) Piece

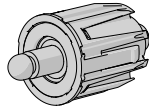
TYPE	STD-5.8m	HD-5.8m
CODE	RE01-0377-000580	RE01-0380-000580
PACK	2	2



COLOR. Mill (000)  
USE WITH. Zipscreen Top Hardware

**BEARING IDLER | 45MM**

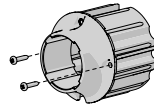
CODE	RE01-0213-050045
PACK	10



COLOR. Black (050)  
USE WITH. 45mm Reducer, 45mm Crown

**ZIPSCREEN REDUCER | 78-45MM W/ SCREW**

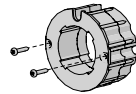
CODE	RE20-0311-050178
PACK	4



COLOR. Black (050)  
USE WITH. 78mm tube, 45mm Bearing Idler, 45mm Crank Adaptor, 45mm Motors

**AUTOMATE | 78MM CROWN**

CODE	MT03-0106-050005
PACK	5



COLOR. Black (050)  
USE WITH. 78mm tube, 45mm Bearing Idler, 45mm Crank Adaptor, 45mm Motors

**IDLER/SPRING ADAPTER MKII | RETAINER CLIP + SCREW**

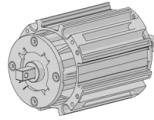
CODE	RE01-0214-050000
PACK	5



COLOR. Black (050)  
USE WITH. 45mm Bearing Idler, Box 120 & 160, Open Brackets

**BEARING IDLER | S100**

CODE	RB80-0202-073100
PACK	1



COLOR. Gray Cloud (073)  
USE WITH. S100 Bracket Set or Plate, Aluminum Tube S100-100STD & 130HD

**ZIP | NO.6 GAUGE**

Double Sided - 1 Roll = 590.5ft (180m)

CODE	SH91-0135-050180
PACK	180

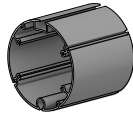


COLOR. Black (050)  
USE WITH. Fabric, Inner Rail

**ALUMINUM TUBE | S100 - 110 STANDARD**

22.9ft (7m) Piece

CODE	RB93-0110-000700
PACK	2

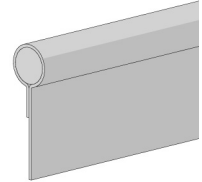


COLOR. Mill (000)  
USE WITH. S100 Crown & Drive, Reducer Set

**7MM FABRIC SPLINE WITH 15MM TAIL**

28ft (100m) roll

CODE	SB91-0409-050015
PACK	1

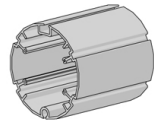


COLOR. Black (050)  
USE WITH. Weight Bars, Tubes

**ALUMINUM TUBE | S100 | 130 HEAVY DUTY**

22.9ft (7m) Piece

CODE	RB93-0130-000700
PACK	1

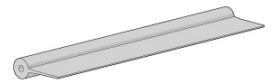


COLOR. Mill (000)  
USE WITH. S100 Crown & Drive, Reducer Set

**7.2MM SPLINE WITH 15MM TAIL**

328ft (100m) roll

CODE	SB91-0408-001015
PACK	1



COLOR. Clear (001)  
USE WITH. F56 Weight bar, 78mm tubes

**ZIPSCREEN | REDUCER END PLATE SET | S100**

2 piece set + screws

CODE	RB80-0501-050110	RB80-0501-050130
PACK	2	2

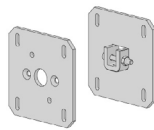


COLOR. Black (050)  
USE WITH. S100 Aluminum Tubes - 110mm & 130mm

**SQUARE MOTOR BRACKET PLATE | S100**

4.33" x 0.197" (110mm x 5mm) - Inside Mount

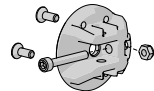
CODE	RB80-1503-xxx110
PACK	1



COLOR. Txd Black (150) , Txd White (169)  
USE WITH. End Plates, Motor Adaptor

**BOX 160 | IDLER ADAPTOR**

CODE	RE01-0215-050000
PACK	4



COLOR. Black (050)  
USE WITH. 110mm Aluminum tubes

**WIRE GUIDE | TUBE END PLATE SET | S100**

2 Piece Set + screws



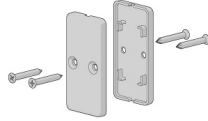
TYPE	110 Standard	130 Heavy Duty	160 Extra Heavy Duty
CODE	RB80-0601-073110	RB80-0601-073130	RB80-0601-073160
PACK	1	1	1

COLOR. Gray Cloud (073)  
USE WITH. S100 Aluminum Tube- 110mm, 130mm & 160mm

## WEIGHT BARS

### F56 WEIGHT BAR | PLAIN END CAP SET

CODE	RE15-0501-050000
PACK	5

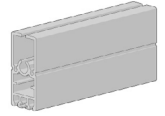


COLOR. Black (050)  
USE WITH. F56 Weight Bar, Straight Drop

### F56 WEIGHT BAR

19ft (5.8m) Piece

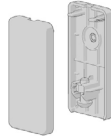
SIZE	Mill (000)	Colors - refer below
CODE	RE15-0101-000580	RE01-0101-xxx580
PACK	2	2



COLOR. Refer to color range on system overview page  
USE WITH. F56 Weight Bar End Caps, Flat Ballast, 7.2mm Tail Spline

### F72 WEIGHT BAR | PLAIN END CAP SET

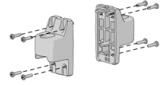
CODE	RE15-0540-050000
PACK	5



COLOR. Black (050)  
USE WITH. F72 Weight Bar, Straight Drop

### F72 WEIGHT BAR | WIRE GUIDE END CAP SET

CODE	RE15-0522-xxx000
PACK	5

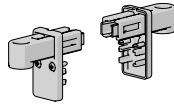


COLOR. Black (050), Pure White (069)  
USE WITH. F72 Weight Bar

### F56 WIRE GUIDE END CAP SET + SCREWS BLK

Includes Screws

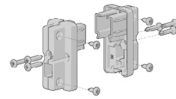
CODE	RE15-0601-xxx001
PACK	5



COLOR. Black (050), Pure White (069)  
USE WITH. F56 Weight Bar

### F56 WEIGHT BAR | ZIPSCREEN END CAP SET

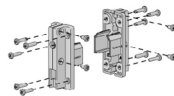
CODE	RE20-0303-xxx002
PACK	10



COLOR. Black (050), Pure White (069)  
USE WITH. F56 Weight Bar

### F72 WEIGHT BAR | ZIPSCREEN END CAP SET

CODE	RE15-0512-xxx000
PACK	5

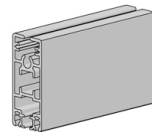


COLOR. Black (050), Pure White (069)  
USE WITH. F72 Weight Bar

### F72 WEIGHT BAR

22ft (7m) Piece

TYPE	Mill (000)	Colors - refer below
CODE	RE15-0112-000700	RE15-0112-xxx700
PACK	1	1

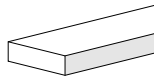


COLOR. Refer to color range on system overview page  
USE WITH. F72 End Caps, Flat Ballast, 7mm Fabric Spline

**F56 WEIGHT BAR | 20 X 5MM BALLAST | WRAPPED**

6.6ft (2m) Piece

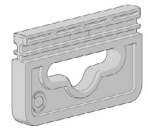
CODE	SB91-1015-050200
PACK	10



COLOR. Black (050)  
USE WITH. F56 Weight Bar

**25MM STRAP DOWN LOOP | F56 WEIGHT BAR**

CODE	RE91-1102-050025
PACK	10

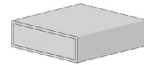


COLOR. Black (050)  
USE WITH. F56 Weight Bar

**F72 WEIGHT BAR | 25 X 8MM BALLAST | WRAPPED**

6.6ft (2m) Piece

CODE	SB91-1018-050200
PACK	5



COLOR. Black (050)  
USE WITH. F72 Weight Bar

**STRAP DOWN PAD EYE SADDLE | 30MM**

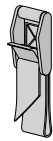
CODE	RE91-1104-013030
PACK	10



COLOR. Polished Stainless Steel (013)  
USE WITH. Strap Down Spring Clip | 50mm

**25MM CAM BUCKLE & STRAP ASSEMBLY**

CODE	RE91-0100-025025
PACK	2

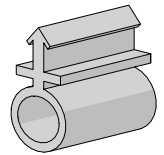


COLOR. Silver Zinc Plated (025)  
USE WITH. 25mm straight drop loop

**WEIGHT BAR BUBBLE SEAL PUSH FIT**

429ft (150m) Roll \*\*WHILE SUPPLIES LAST\*\*

CODE	SB91-0013-050150
PACK	150



COLOR. Black (050)  
USE WITH. F56 Weight Bar, F72 Weight Bar

**25MM FOOTMANS LOOP**

CODE	RE91-1101-013025
PACK	10

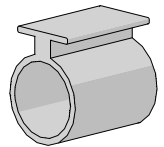


COLOR. Stainless Steel (013)  
USE WITH. 25mm strap down loop

**BUBBLE SEAL STRIP | F56 WEIGHT BAR**

19ft (5.8m) Piece \*\*WHILE SUPPLIES LAST\*\*

CODE	SB91-0001-050580
PACK	10



COLOR. Black (050)  
USE WITH. F56 Weight Bar

**STRAP DOWN SPRING CLIP | 50MM**

CODE	RE91-1103-009050
PACK	10

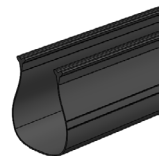


COLOR. Stainless Steel (009)  
USE WITH. 25mm strap down loop & pad eye saddle

**ULTRA LOCK SEAL V3**

164ft (50m) Roll

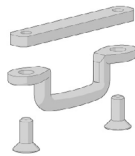
CODE	SB91-0008-050050
PACK	50



COLOR. Black (050)  
USE WITH. F56 Weight Bar, F72 Weight Bar

**FOOTMANS LOOP KIT | F72 WEIGHT BAR**

CODE	RE91-1111-013025
PACK	5



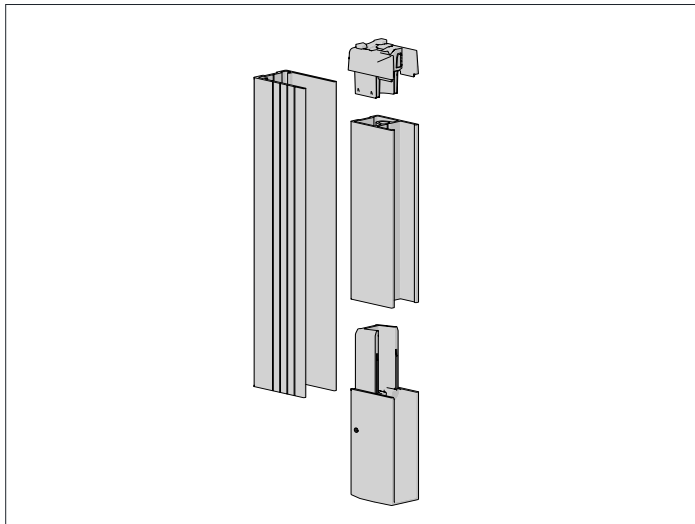
COLOR. Stainless Steel (013)  
USE WITH. F72 Weight Bar

**16MM BUBBLE SEAL | F72 WEIGHT BAR**

CODE	SB91-0018-050040
PACK	40



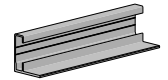
COLOR. Black (050)  
USE WITH. F72 Weight Bar



**ZIPSCREEN | L-FIXING RAIL | BOX 160/190**

18ft (5.5m) Piece

TYPE	Mill (000)	Colors - refer below
CODE	SB04-0708-000550	SB04-0708-xxx550-PF
PACK	8	8

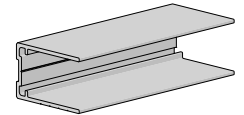


COLOR. Txd Black (150), Txd White (169), Txd Bronze (180)  
 USE WITH. Box 160/190, S100 Open Brackets

**ZIPSCREEN | U MOUNTING RAIL**

18ft (5.5m) Piece

TYPE	Mill (000)	Colors - refer below
CODE	SB04-0702-000550	SB04-0702-xxx550-PF
PACK	10	10

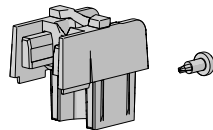


COLOR. Refer to color range on system overview page  
 USE WITH. Inner Rail, L Fixing Rail, End Plate set

**ZIPSCREEN | FUNNEL W/ INTEGRATED TOPS STOP**

+ screw

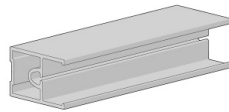
CODE	SB05-1412-050001
PACK	50



COLOR. Black (050)  
 USE WITH. Inner Rail

**ZIPSCREEN | INNER RAIL**

18ft (5.5m) Piece



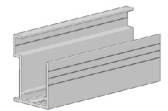
TYPE	Mill (000)	Colors - refer below
CODE	SB04-0701-000550	SB04-0701-xxx550
PACK	10	10

COLOR. Refer to color range on system overview page  
 USE WITH. U Mounting Rail, Inner Rail Funnel & Stop Set, Inner Rail Bottom Cap Set

**ZIPSCREEN | FACE FIX + U-MOUNTING RAIL**

18ft (5.5m) Piece

CODE	SB04-0705-000550
PACK	8

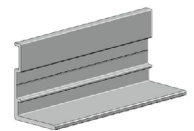


COLOR. Mill (000)  
 USE WITH. Inner Rail, End Plate set

**ZIPSCREEN | L-FIXING RAIL | BOX 120**

18ft (5.5m) Piece

TYPE	Mill (000)	Color - refer below
CODE	SB04-0703-000550	SB04-0703-xxx550
PACK	10	10

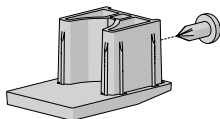


COLOR. Refer to color range on system overview page  
 USE WITH. U Mounting Rail

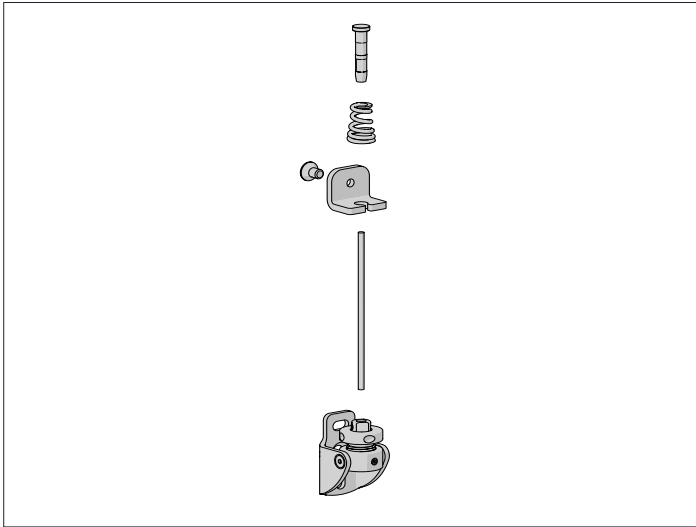
**ZIPSCREEN | INNER RAIL BOTTOM CAP SET**

+ screw

CODE	SB05-1511-050001
PACK	50



COLOR. Black (050)  
 USE WITH. Inner Rail



**DOME HEAD TERMINAL | 3.2MM**

For 3.2mm Wire

CODE	RE24-1312-009002
PACK	20

COLOR. Polished Stainless Steel (009)  
 USE WITH. 3.2mm Wire Tensioning Guide



**WIRE GUIDE TENSIONING CABLE | 3.2MM**

Thread: 1 x 19 | 1 Roll = 164ft (50m)

CODE	RB91-3602-010032
PACK	50

COLOR. Stainless Steel (010)  
 USE WITH. Dome Head Terminal

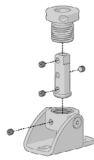


**WIRE GUIDE | BOTTOM SWIVEL BRACKET | 3.2MM**

Floor/Wall Mount

CODE	RE24-2205-009000
PACK	4

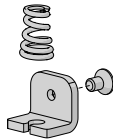
COLOR. Polished Stainless Steel (009)  
 USE WITH. Swaged Dome Stud Terminal, 3.2mm Wire



**WIRE GUIDE | TOP SADDLE TERMINAL KIT | 3.2MM**

CODE	RE24-4004-010032
PACK	8

COLOR. Stainless Steel (010)  
 USE WITH. Box 120 & 160 End plates, Open Brackets



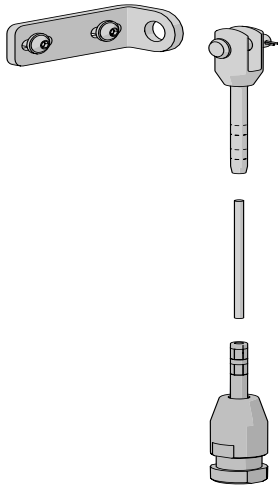
**SWAGED DOME HEAD TERMINAL | 3.2MM**

13.7ft (4.2m) Wire

CODE	RE24-1312-009420
PACK	4

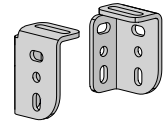
COLOR. Polished Stainless Steel (009)  
 USE WITH. Wire Guide Top Saddle Terminal Kit w/ Spring





**WALL MOUNTING L BRACKET - LH AND RH SET**  
3.54" x 1.5" (90mm x 38mm) \*WHILE SUPPLY LASTS\*

CODE	RE24-2301-009090
PACK	1



COLOR. Polished Stainless Steel (009)  
USE WITH. Threaded Stud Terminal

**THREADED STUD TERMINAL**  
+ nut & washer \*WHILE SUPPLY LASTS\*

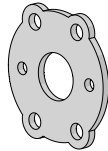
CODE	RE24-1401-009040
PACK	2



COLOR. Polished Stainless Steel (009)  
USE WITH. Swage Fork Terminal

**ZAMAK ADAPTER SPACER**

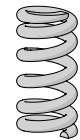
CODE	RB80-0411-025050
PACK	1



COLOR. Zinc Plated (025)  
USE WITH. Zamak Adapter in Box 190 & S100 Recess Brackets

**TENSION SPRING**  
14.5 I.D. x 23.5 O.D x 50mm \*WHILE SUPPLY LASTS\*

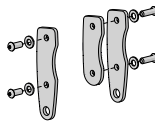
CODE	RE24-9101-009050
PACK	2



COLOR. Polished Stainless Steel (009)  
USE WITH. Threaded Stud Terminal

**S100 MOTOR | WIRE GUIDE BRACKET ADAPTER KIT**  
Outside / Wall Mount \*WHILE SUPPLY LASTS\*

TYPE	Zinc Plated	Colors - refer below*
CODE	RB80-0476-025100	RB80-0476-xxx100
PACK	1	1



COLOR. Black (050), Pure White (069)  
USE WITH. S100 Bracket Set - Outside/ Wall Mount

**BOX 190 | WIRE GUIDE ADAPTER PLATE**

CODE	RB80-0481-012000
PACK	1



COLOR. Stainless Steel (012)  
USE WITH. Box 190 end plates and fork terminal

**SWAGE FORK TERMINAL | 4MM**  
0.16" (4mm) stainless steel wire \*WHILE SUPPLY LASTS\*

CODE	RE24-1314-009400
PACK	2



COLOR. Polished Stainless Steel (009)  
USE WITH. S100 Bracket Set - Outside/Wall Mount, Wire Guide Cable

**WIRE GUIDE TENSIONING CABLE | 4MM**  
164ft (50m) Roll \*WHILE SUPPLY LASTS\*

CODE	RB91-3602-006040
PACK	50



COLOR. Stainless Steel (006)  
USE WITH. Flat Head Stud & Swage Fork Terminals, F72 Wire Guide End Caps

**TENSIONING BRACKET & FLAT HEAD STUD TERMINAL**  
0.16" (4mm) stainless steel wire \*WHILE SUPPLY LASTS\*

CODE	RE24-2601-009040
PACK	2



COLOR. Polished Stainless Steel (009)  
USE WITH. 4mm Wire Guide Cable

## OPTIONAL ACCESSORIES

### AUTOMATE | SOLAR WIND/LIGHT SENSOR

TYPE	Solar powered
CODE	MT02-0301-072001
PACK	1



COLOR. White (072)  
USE WITH. AUTOMATE FT Motor

### STAINLESS STEEL RIVET

0.16" O.D [Grip Range 0.126" - 0.189"]

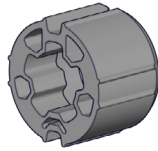
CODE	HD86-0332-010009
PACK	100



COLOR. Stainless Steel (010)  
USE WITH. Zipscreen U Mounting Rail, Inner Rail, L Fixing Rail

### SOMFY DRIVE WHEEL

TYPE	78mm
CODE	RE01-0678-050003
PACK	5

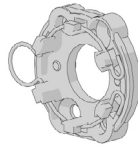


COLOR. Black (050)  
USE WITH. M50 Somfy Round Head Motor

### UNIV ZAMAK ADAPTER & LOCK RING

M6 x 10mm (open brackets)

TYPE	Universal
CODE	RB56-0763-014050
PACK	1



COLOR. Cast Silver (014)  
USE WITH. Open Brackets

### UNIV ZAMAK ADAPTER & LOCK RING

M6 X 12mm (boxed system)

TYPE	Universal
CODE	RB56-0764-014050
PACK	1

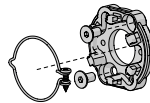


COLOR. Cast Silver (014)  
USE WITH. Box 120 system

### UNIVERSAL ZAMAK ADAPTER

with Lock Ring & screws

CODE	RB56-0762-014050
PACK	1

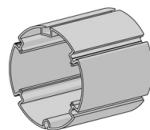


COLOR. Cast Silver (014)  
USE WITH. S100 Square Motor Bracket Plate, AX Motors

### ALUMINUM TUBE | S100 | 160 EXTRA HEAVY DUTY

O.D. 6.3" x 22.9ft (160mm x 7m)

TYPE	22.9ft (7m)
CODE	RB93-0160-000700
PACK	1

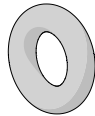


COLOR. Mill (000)  
USE WITH. S100 Tube End Plates, S100 - 130mm Tube (internal sleeve)

## SPARE PARTS

### BOX 120 END PLATE | O-RING

CODE	HD87-1060-050030
PACK	1000



COLOR. Black (050)  
USE WITH. BOX 120 End Plates (RE01-1101-xxx120)

### BOX 120 END PLATE COVER, BLACK

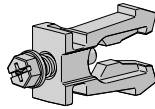
CODE	ME01-1101-050905
PACK	4



COLOR. Refer to color range on system overview page  
USE WITH. BOX 120 End Plates (RE01-1101-xxx120)

### IDLER/SPRING ADAPTER MKII | RETAINER CLIP + SCREW

CODE	RE01-0214-050004
PACK	10



COLOR. Black (050)  
USE WITH. Idler Adaptor Kit MKII (RE01-0214-050000)

### SELF-DRILLING HEX HEAD SCREWS | PAINTED

CODE	HD82-5022-xxx013
PACK	500



COLOR. Refer to color range on system overview page  
USE WITH. Zipscreen Inner Rail & U Mounting Rail

### ZIPSCREEN | INNER RAIL ALIGNMENT TOOL

CODE	RE20-9001-570000
PACK	5



COLOR. Yellow (570)  
USE WITH. Zipscreen Inner Rail & U Mounting Rail