

# ROMANS

<b>Section 1</b>	<b>HAND DRAWN SYSTEMS</b>		
	SS01	28	
<b>Section 2</b>	<b>CHAIN CONTROL SYSTEM</b>		
	SS38	30	
	SS38 Ready Made	33	
<b>Section 3</b>	<b>MOTORISED SYSTEM</b>		
	SS38	34	
	SS40	36	
<b>Section 4</b>	<b>ROLLER SPOOL SYSTEM</b>		
	SS48	40	
<b>Section 5</b>	<b>BATTEN SYSTEMS</b>		
	SS91	Macro	44
		Intermediate	46
<b>Section 6</b>	<b>COMMON ACCESSORIES</b>		
	Common Accessories		48





COLOUR RANGE



Snow White

PRODUCT OPTIONS

**FIXED CORD PULLEYS** 3

A detailed technical drawing of a fixed cord pulley. It shows a grey, curved metal housing with a central pulley wheel. The housing has two mounting holes on its top surface. The pulley wheel is positioned on the inner curve of the housing.

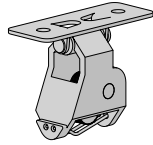
**SWIVEL CORD LOCKS**

Swivel | Brass Rollers

1

CODE.	SS01-2011-060000
PACK.	100   1000 Pcs

COLOUR. Natural White / Silver Base 060  
 USE WITH. Timber Head Board, Braided Cord



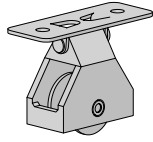
**SWIVEL CORD PULLEYS**

Plastic Rollers

2

CODE.	SS01-2021-060002
PACK.	100   1000 Pcs

COLOUR. Natural White / White Base 060  
 USE WITH. Timber Head Board, Braided Cord



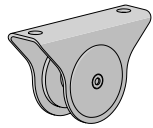
**FIXED CORD PULLEYS**

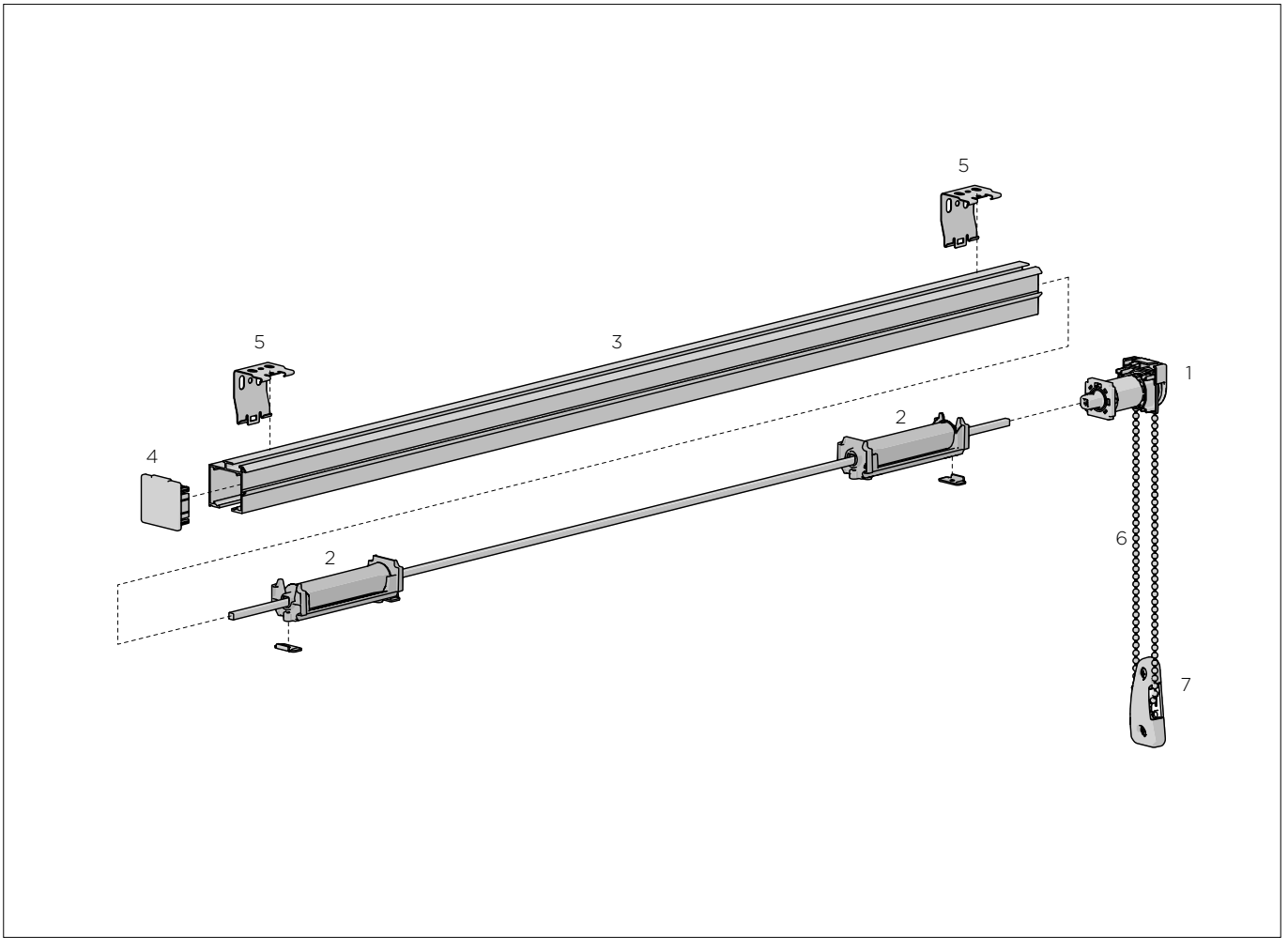
Plastic Rollers

3

CODE.	SS01-2032-062000
PACK.	200   1000 Pcs

COLOUR. Snow White 062  
 USE WITH. Timber Head Board, Braided Cord





COLOUR RANGE



Pure White

PRODUCT OPTIONS

**SS38 SPRING LOADED MOUNTING CLIP** 5b

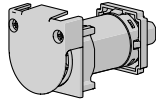
**CHAIN TENSIONERS** 7

**LIFT CORD BELL WEIGHT** 8

**SS38 DIRECT DRIVE**  
5mm Square

1a

CODE.	SS38-0411-069051
PACK.	25   200 Pcs

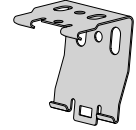


COLOUR. Pure White 069  
USE WITH. SS38 Aluminium Profile, Metal Rod 5mm Square, Rotation Chain

**SS38 LOW PROFILE MOUNTING CLIP**

5a

CODE.	SS38-0212-069034
PACK.	50   1000 Pcs

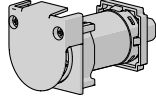


COLOUR. Pure White 069  
USE WITH. SS38 Aluminium Profile

**SS38 PLANETARY DRIVE**  
5mm Square

1b

CODE.	SS38-0420-069051
PACK.	25   200 Pcs

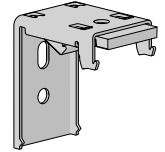


COLOUR. Pure White 069  
USE WITH. SS38 Aluminium Profile, Metal Rod 5mm Square, Rotation chain

**SS38 SPRING LOADED MOUNTING BRACKET**

5b

CODE.	SS38-0232-069030
PACK.	50   600 Pcs

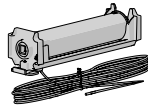


COLOUR. Pure White 069  
USE WITH. SS38 Aluminium Profile

**SS38 STANDARD SPOOL WITH 1.4MM CORD (4M)**  
+ Fixing clamps - 5mm Square

2a

CODE.	SS38-8341-580451
PACK.	25   200 Sets

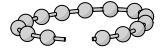


COLOUR. Pure White 069  
USE WITH. SS38 Aluminium Profile, Metal Square Rod

**METAL ROTATION CHAIN | 150LM ROLLS**  
#10/4.5 Double Bead - 6p/48-49

6a

SIZE.	Nickel plated - silver	Stainless Steel
CODE.	VA01-1401-020S45	VA01-1401-010X45
PACK.	150   600 Metres	150   600 Metres

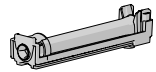


USE WITH. Direct Drive, Planetary Drive

**SS38 SLIM SPOOL WITH 1MM CORD (4M)**  
+ Fixing clamps - 5mm Square

2b

CODE.	SS38-8331-050069
PACK.	25   200 Sets

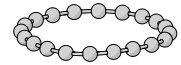


COLOUR. Black 050 Spool / Pure White 069 Cord  
USE WITH. SS38 Aluminium Profile, Metal Square Rod

**PRE LOOPED METAL ROTATION CHAIN | STEEL**  
#10/4.5 Double Bead - 6p/48-49

6b

SIZE.	50cm
CODE.	VA01-1401-S20050
PACK.	10   500 Pcs



SIZE.	75cm	100cm	125cm
CODE.	VA01-1401-S20075	VA01-1401-S20100	VA01-1401-S20125
PACK.	10   500 Pcs	10   400 Pcs	10   300 Pcs

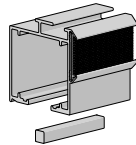
SIZE.	150cm	175cm	200cm
CODE.	VA01-1401-S20150	VA01-1401-S20175	VA01-1401-S20200
PACK.	10   250 Pcs	10   200 Pcs	10   200 Pcs

USE WITH. Direct Drive, Planetary Drive

**SS38 ALUM. PROFILE + CRIMP TAPE & SQUARE TILTROD**  
37 x 38.0mm x 5.8mt Length

3

CODE.	SS38-0130-069580
PACK.	8   96 Lengths



COLOUR. Pure White 069  
USE WITH. SS38 Spool, Head rail end cap, Direct & Planetary Drive

**10MM ACM FLAT SPLINE - NO TAPE**  
100 Lm Roll

-

TYPE.	No Tape
CODE.	RB92-1001-001100
PACK.	1   10 Rolls



COLOUR. Natural 001  
USE WITH. SS38 Aluminium Profile

**10MM ACM FLAT SPLINE - WITH DOUBLE SIDED TAPE**  
Double Sided MP-HR TAPE - 75 Lm Roll

-

TYPE.	One Side	Two Sides
CODE.	RB92-1002-001075	RB92-1003-001075
PACK.	1   10 Rolls	1   10 Rolls

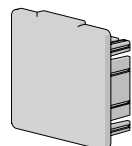


COLOUR. Natural 001  
USE WITH. SS38 Aluminium Profile

**SS38 HEAD RAIL END CAP**

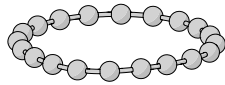
4

CODE.	SS38-0120-069040
PACK.	25   1000 Pcs



COLOUR. Pure White 069  
USE WITH. SS38 Aluminium Profile

**PRE LOOPED METAL ROTATION CHAIN STAINLESS STEEL** 6c  
#10/4.5 Double Bead - 6p/48-49



SIZE.	50cm
CODE.	VA01-1401-X10050
PACK.	10   500 Pcs

SIZE.	75cm	100cm	125cm
CODE.	VA01-1401-X10075	VA01-1401-X10100	VA01-1401-X10125
PACK.	10   500 Pcs	10   400 Pcs	10   300 Pcs

SIZE.	150cm	175cm	200cm
CODE.	VA01-1401-X10150	VA01-1401-X10175	VA01-1401-X10200
PACK.	10   250 Pcs	10   200 Pcs	10   200 Pcs

USE WITH. Direct Drive, Planetary Drive

**CHAIN TENSIONERS & SCREWS** 7b  
Recess Fix

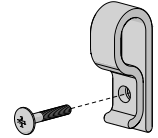
CODE.	RB91-1322-xxx000
PACK.	25   400 Sets



COLOUR. Black 050, Pure White 069, Sandstone 269, Barley 283, Silver Grey 338  
USE WITH. #10 Rotation Chains - Plastic or Metal, #10 Chain Stopper - Ball

**CHAIN TENSIONING HOOK 'SMALL' & SCREW** 7c  
Universal Fix

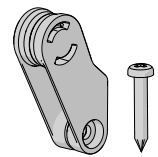
CODE.	SS91-1312-001040
PACK.	100   2000 Sets



COLOUR. Clear 000  
USE WITH. #10 Rotation Chains - Plastic or Metal

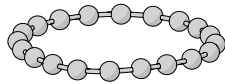
**CHAIN TENSIONER | UNIVERSAL** 7d

CODE.	RB91-1325-xxx000
PACK.	50   1000 Sets



COLOUR. Clear 001, Black 050, Pure White 069  
USE WITH. #10 Rotation Chains - Plastic or Metal

**PRE LOOPED PLASTIC ROTATION CHAIN | COLOURS** 6d  
#10/4.5 Double Bead - 6p/48-49 [\*=INDENT]



SIZE.	50cm
CODE.	VA01-1406-xxx050
PACK.	10   500 Pcs

SIZE.	75cm	100cm	125cm
CODE.	VA01-1406-xxx075	VA01-1406-xxx100	VA01-1406-xxx125
PACK.	10   500 Pcs	10   500 Pcs	10   500 Pcs

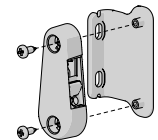
SIZE.	150cm	175cm	200cm
CODE.	VA01-1406-xxx150	VA01-1406-xxx175	VA01-1406-xxx200
PACK.	10   500 Pcs	10   500 Pcs	10   400 Pcs

SIZE.	225cm*	250cm*
CODE.	VA01-1406-xxx225	VA01-1406-xxx250
PACK.	10   400 Pcs	10   200 Pcs

COLOUR. Black 050, Pure White 069, Silver Grey 338, Birch White 412, Barley 283  
USE WITH. Direct Drive, Planetary Drive

**CHAINHOLD TD TENSIONER + SCREWS** 7e

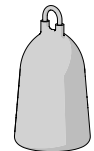
CODE.	RB91-1331-069000
PACK.	25   400 Sets



COLOUR. Pure White 069  
USE WITH. #10 Rotation Chains - Plastic or Metal

**LIFT CORD BELL WEIGHT** 8

CODE.	SS31-4101-062000
PACK.	100   400 Pcs



COLOUR. Snow White 062  
USE WITH. Cord Ballast Pinnacle, Ballast Hook for Micro Batten Clip, Braided Cord

**METAL CHAIN JOINING PLIERS | WITH CUTTING TOOL** -

*Price not subject to group discount*

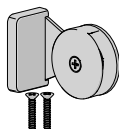
CODE.	TM10-0290-000045
PACK.	1   5 Pcs



COLOUR. Silver 020  
USE WITH. #10 / 4.5mm Ball Metal Rotation Chain

**CHAIN TENSIONERS & SCREWS** 7a  
Face/Wall Fix

CODE.	RB91-1321-xxx000
PACK.	25   400 Sets



COLOUR. Black 050, Pure White 069, Sandstone 269, Barley 283, Silver Grey 338  
USE WITH. #10 Rotation Chains - Plastic or Metal, #10 Chain Stopper - Ball

**TOUCH TAPE SEW-ON | LOOP 25MM** -  
1 Roll = 25Lm

CODE.	HD31-0125-060025
PACK.	1   10 Rolls



COLOUR. Natural White 060  
USE WITH. Crimped Touch Tape Hook on SS38 Aluminium Profile

SS38-9411-069090	SS38 RDM System with Direct Drive 0.914Lm/3ft	1	2	3	1	8	Indent
SS38-9411-069120	SS38 RDM System with Direct Drive 1.219Lm/4ft	1	3	4	1	8	
SS38-9411-069150	SS38 RDM System with Direct Drive 1.525Lm/5ft	1	3	4	1	8	
SS38-9421-069090	SS38 RDM System with Planetary Drive 0.914Lm/3ft	1	2	3	1	8	
SS38-9421-069120	SS38 RDM System with Planetary Drive 1.219Lm/4ft	1	3	4	1	8	
SS38-9421-069150	SS38 RDM System with Planetary Drive 1.525Lm/5ft	1	3	4	1	8	
SS38-9421-069180	SS38 RDM System with Planetary Drive 1.829Lm/6ft	1	3	5	1	8	
SS38-9421-069210	SS38 RDM System with Planetary Drive 2.134Lm/7ft	1	3	6	1	8	
SS38-9421-069240	SS38 RDM System with Planetary Drive 2.438Lm/8ft	1	4	7	1	8	
SS38-9421-069270	SS38 RDM System with Planetary Drive 2.743Lm/9ft	1	4	7	1	8	
SS38-9421-069300	SS38 RDM System with Planetary Drive 3.048Lm/10ft	1	4	8	1	8	
SS38-9421-069330	SS38 RDM System with Planetary Drive 3.353Lm/11ft	1	4	9	1	8	
SS38-9421-069360	SS38 RDM System with Planetary Drive 3.658Lm/12ft	1	5	9	1	8	
SS38-9421-069390	SS38 RDM System with Planetary Drive 3.962Lm/13ft	1	5	9	1	8	

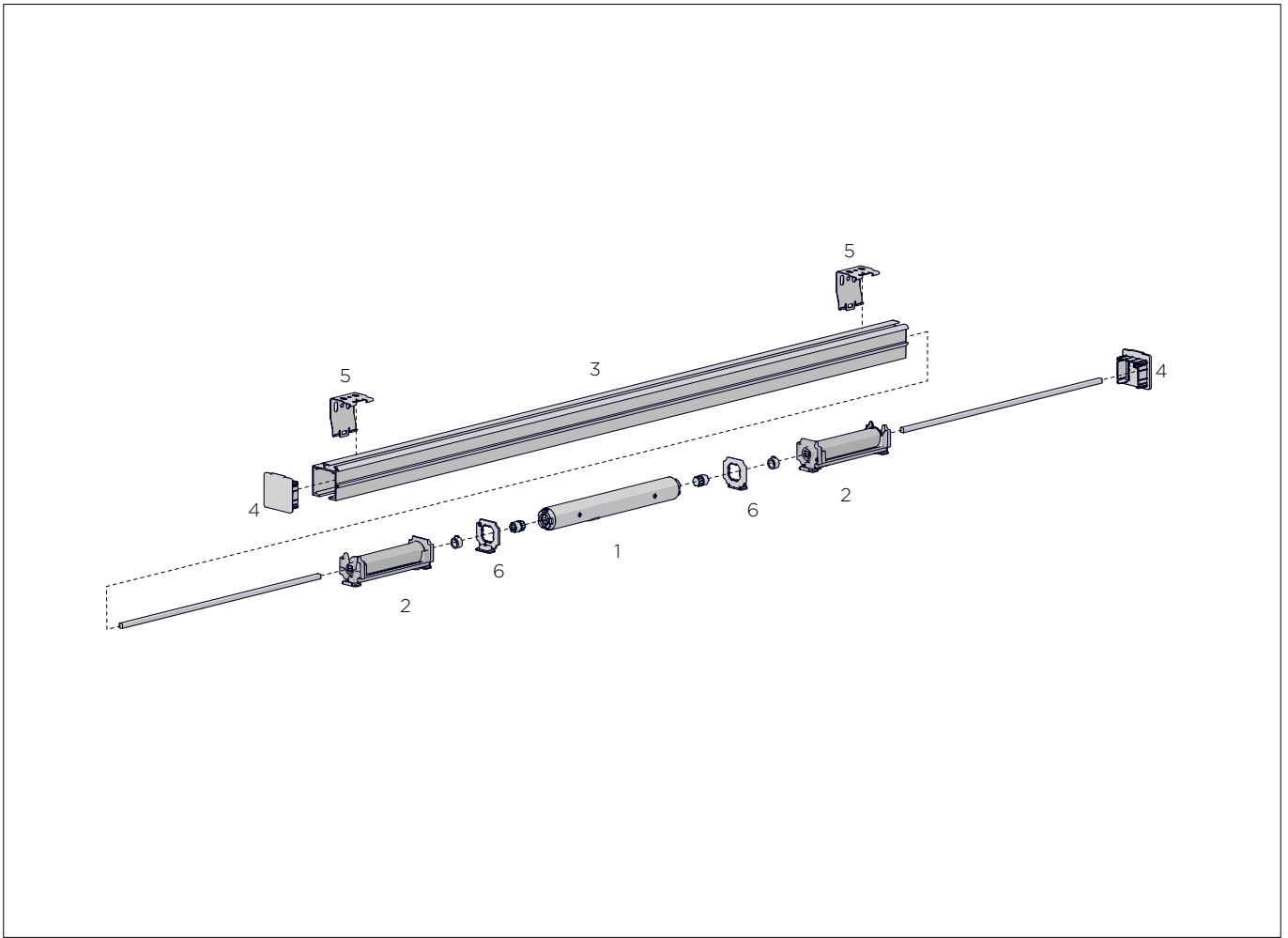
SPECIFICATIONS

CTS Spools, Tildrod, control mechanisms, brackets and end caps all assembled onto aluminium rail.

300mm increments

Chain to be purchased separately

Subject to standard Terms & Conditions for minimum order value F.I.S. Prices do not include G.S.T.



COLOUR RANGE



Pure White

PRODUCT OPTIONS

**SS38 SPRING LOADED MOUNTING CLIP** 5b

A detailed view of the spring-loaded mounting clip, showing its L-shaped profile and the spring mechanism.

**AUTOMATE HUB**

A view of the Automate Hub, which is a dark, rectangular, shallow tray-like component.

**AUTOMATE CONTROLS**

A view of the Automate Controls, which include a digital display and several buttons on a white panel.

**AUTOMATE | CL 0.8NM CL ROMAN MOTOR KIT** 1

Includes: Headrail Adapt., Shaft Adapt. For SS38, Shaft Stop Rings

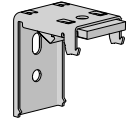
CODE.	MT01-3001-069002
PACK.	1   50Kits



COLOUR. Pure White 069  
USE WITH. Paradigm Remote, SS38 Aluminium Profile

**SS38 SPRING LOADED MOUNTING CLIP** 5b

CODE.	SS38-0232-069030
PACK.	50   600 Pcs

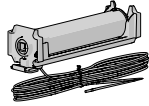


COLOUR. Pure White 069  
USE WITH. SS38 Aluminium Profile

**SS38 STANDARD SPOOL WITH 1.4MM CORD (4M)** 2a

+ Fixing clamps - 5mm Square

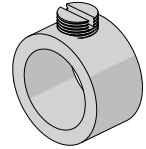
CODE.	SS38-8341-580451
PACK.	25   200 Pcs



COLOUR. Pure White 069  
USE WITH. SS38 Aluminium Profile, Metal Square Rod

**SS38 SHAFT STOP RING - 6MM/7MM ROD** 6

CODE.	SS38-1001-080000
PACK.	50   1000 Pcs

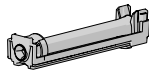


COLOUR. Bronze 080  
USE WITH. SS38 Aluminium Profile

**SS38 SLIM SPOOL WITH 1MM CORD (4M)** 2b

+ Fixing clamps - 5mm Square

CODE.	SS38-8331-050069
PACK.	25   200 Pcs



COLOUR. Black 050 Spool / Pure White 069 Cord  
USE WITH. SS38 Aluminium Profile, Metal Square Rod

**TOUCH TAPE SEW-ON | LOOP 25MM** -

1 Roll = 25Lm

CODE.	HD31-0125-060025
PACK.	1   10 Rolls

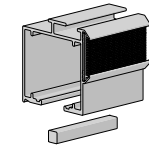


COLOUR. Natural White 060  
USE WITH. Crimped Touch Tape Hook on SS38 Aluminium Profile

**SS38 ALUM. PROFILE + CRIMP TAPE & SQUARE TILTROD** 3

37 x 38.0mm x 5.8mt Length

CODE.	SS38-0130-069580
PACK.	8   96 Lengths



COLOUR. Pure White 069  
USE WITH. SS38 Spool, Head rail end cap, Direct & Planetary Drive

**10MM ACM FLAT SPLINE - NO TAPE** -

100 Lm Roll

TYPE.	No Tape
CODE.	RB92-1001-001100
PACK.	1   10 Rolls



COLOUR. Natural 001  
USE WITH. SS38 Aluminium Profile

**10MM ACM FLAT SPLINE - WITH DOUBLE SIDED TAPE** -

Double Sided MP-HR TAPE - 75 Lm Roll

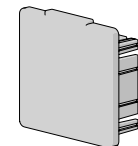
TYPE.	One Side	Two Sides
CODE.	RB92-1002-001075	RB92-1003-001075
PACK.	1   10 Rolls	1   10 Rolls



COLOUR. Natural 001  
USE WITH. SS38 Aluminium Profile

**SS38 HEAD RAIL END CAP** 4

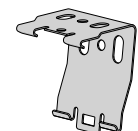
CODE.	SS38-0120-069040
PACK.	25   1000 Pcs



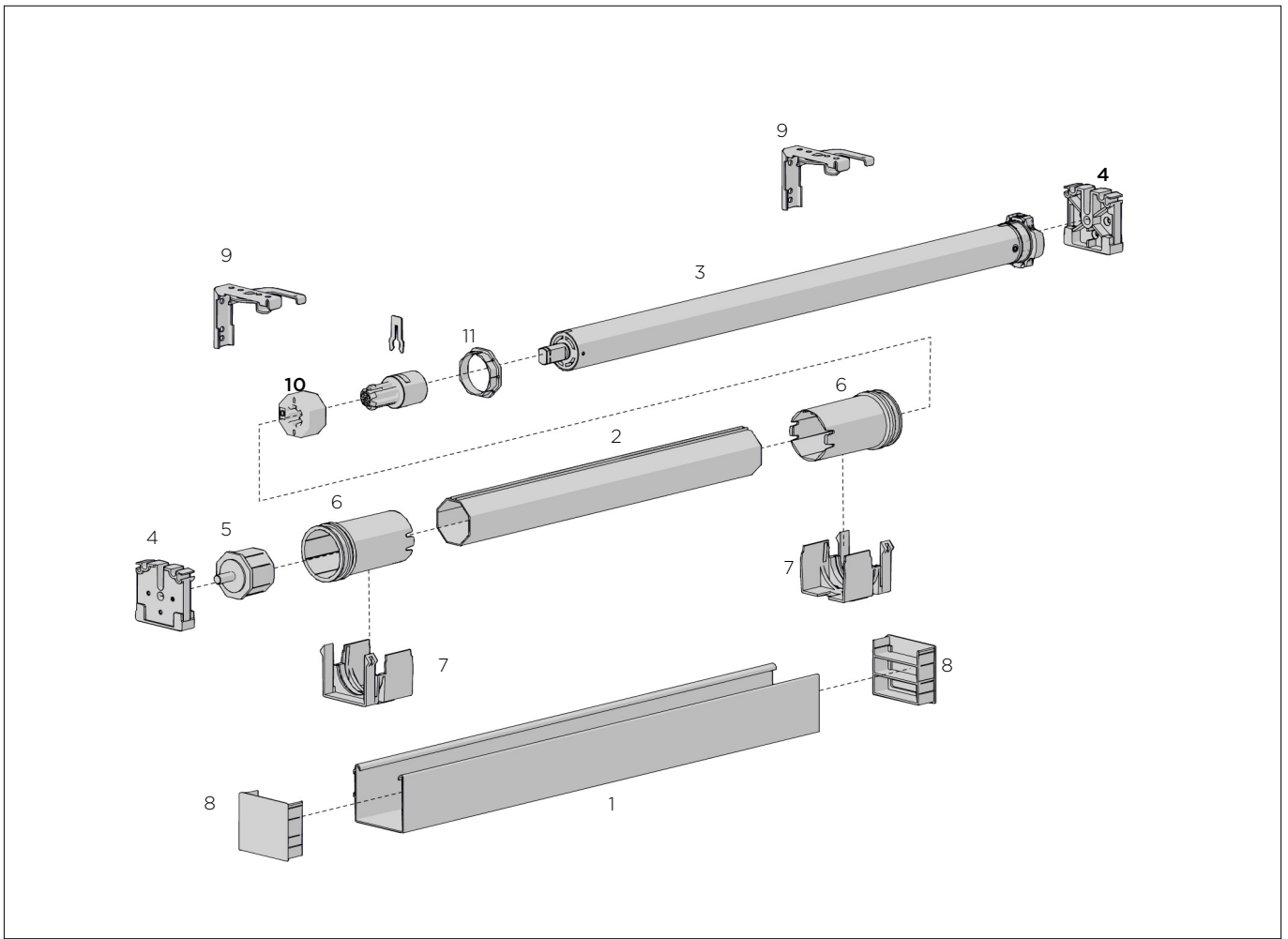
COLOUR. Pure White 069  
USE WITH. SS38 Aluminium Profile

**SS38 LOW PROFILE MOUNTING CLIP** 5a

CODE.	SS38-0212-069034
PACK.	50   1000 Pcs



COLOUR. Pure White 069  
USE WITH. SS38 Aluminium Profile



COLOUR RANGE



Off White

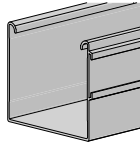
PRODUCT OPTIONS



**ALUMINIUM HEAD RAIL | SS40/VB40**

57.8 x 51.9mm x 4.8mt Length \* = Indent

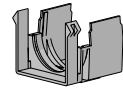
TYPE.	without touch tape	with touch Tape
CODE.	SS40-0251-066480	SS40-0252-066480 *
PACK.	4   96 Lengths	4   96 Lengths



COLOUR. Off White 066  
USE WITH. Plastic End Cap, Universal Bearer, Intermediate Cam Support

**CTS40 SUPPORT CRADLE**

CODE.	VB40-1622-310045
PACK.	10   200 Pcs

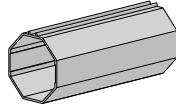


COLOUR. Smokey 310  
USE WITH. Aluminium Pipe - Octagonal 40mm, CTS40 Cone, Braided Cord - 1.4mm

**ALUMINIUM OCTAGONAL 40 TUBE**

O.D 40mm x 5.5mt Length

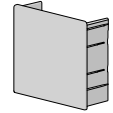
CODE.	VB40-0240-000550
PACK.	10   100 Lengths



COLOUR. Mill Finish 000  
USE WITH. CTS40 Cone, Idler End, Drive Wheel, Crown Wheel

**SS40 PLASTIC END CAP**

CODE.	SS40-1253-066001
PACK.	10   500 Pcs



COLOUR. Off White 066  
USE WITH. Aluminium Head Rail

**AUTOMATE | E6 6NM MOTOR**

[Ø35/240V/28rpm]

CODE.	MT01-1135-069001
PACK.	1   6 Pcs

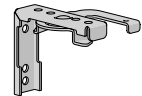


COLOUR. Pure White 069  
USE WITH. Oct. Crown Wheel, Oct. Tube, Ss40/Vb40 Uni. Bearer, M40 Drive Wheel

**SS40/VB40 INTERMEDIATE CAM SUPPORT**

Universal fix

CODE.	SS40-0301-025001
PACK.	20   400 Pcs



COLOUR. Zinc Plated Silver 025  
USE WITH. Aluminium Head Rail

**AUTOMATE | ML 6NM MOTOR**

[Ø35/240V/28rpm]

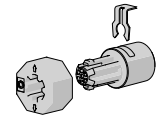
CODE.	MT01-1035-069003
PACK.	1   8 Pcs



COLOUR. Pure White 069  
USE WITH. Oct. Crown Wheel, Oct. Tube, Ss40/Vb40 Uni. Bearer, M40 Drive Wheel

**M40 DRIVE WHEEL & 10MM TRANSIT SHAFT ADAPTOR**

CODE.	VB40-0306-050408
PACK.	5   250 Sets



COLOUR. Black 050  
USE WITH. Automate Motor, Octagonal Tube

**AUTOMATE | LI-ION 6NM MOTOR**

[35mm/6.0Nm/24rpm] 5V'

CODE.	MT01-1335-069002
PACK.	1   8 Pcs



COLOUR. Pure White 069  
USE WITH. Oct. Crown Wheel, Oct. Tube, Ss40/Vb40 Uni. Bearer, M40 Drive Wheel

**M40 OCTAGONAL CROWN WHEEL**

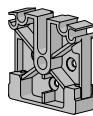
CODE.	VB40-0134-050404
PACK.	5   500 Pcs



COLOUR. Black 050  
USE WITH. Aluminium Pipe - Octagonal 40mm, Automate QE6

**SS40/VB40 UNIVERSAL BEARER**

CODE.	VB40-0701-050040
PACK.	10   100 Pcs



COLOUR. Black 050  
USE WITH. Aluminium Head Rail, Standard Idler End - Octagonal 40mm

**STANDARD IDLER END**

Octagonal 40mm

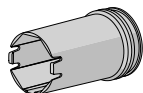
CODE.	VB40-0601-060040
PACK.	5   250 Pcs



COLOUR. Natural White 060  
USE WITH. Aluminium Pipe - Octagonal 40mm, Universal Bearer

**CTS40 CONE**

CODE.	VB40-1621-060044
PACK.	10   200 Pcs



COLOUR. Natural White 060  
USE WITH. Aluminium Pipe - Octagonal 40mm, CTS40 Support Cradle, Braided Cord

**CUT TO SIZE SERVICE**  
**Head Rail**

WIDTH	600	900	1200	1500	1800	2100
OFF WHITE						
No. of Support Punches	2	3	4	4	5	5
No. of Bearer Punches	2	2	2	2	2	2

WIDTH	2400	2700	3000	3300	3600	3900
OFF WHITE						
No. of Support Punches	6	6	7	7	8	8
No. of Bearer Punches	2	2	2	2	2	2

WIDTH	4200	4500	4800
OFF WHITE			
No. of Support Punches	9	9	10
No. of Bearer Punches	2	2	2

**STANDARD COSTS;**

**Aluminium Octagonal Tube**

WIDTH	600	900	1200	1500	1800	2100
MILL FINISH						

WIDTH	2400	2700	3000	3300	3600	3900
MILL FINISH						

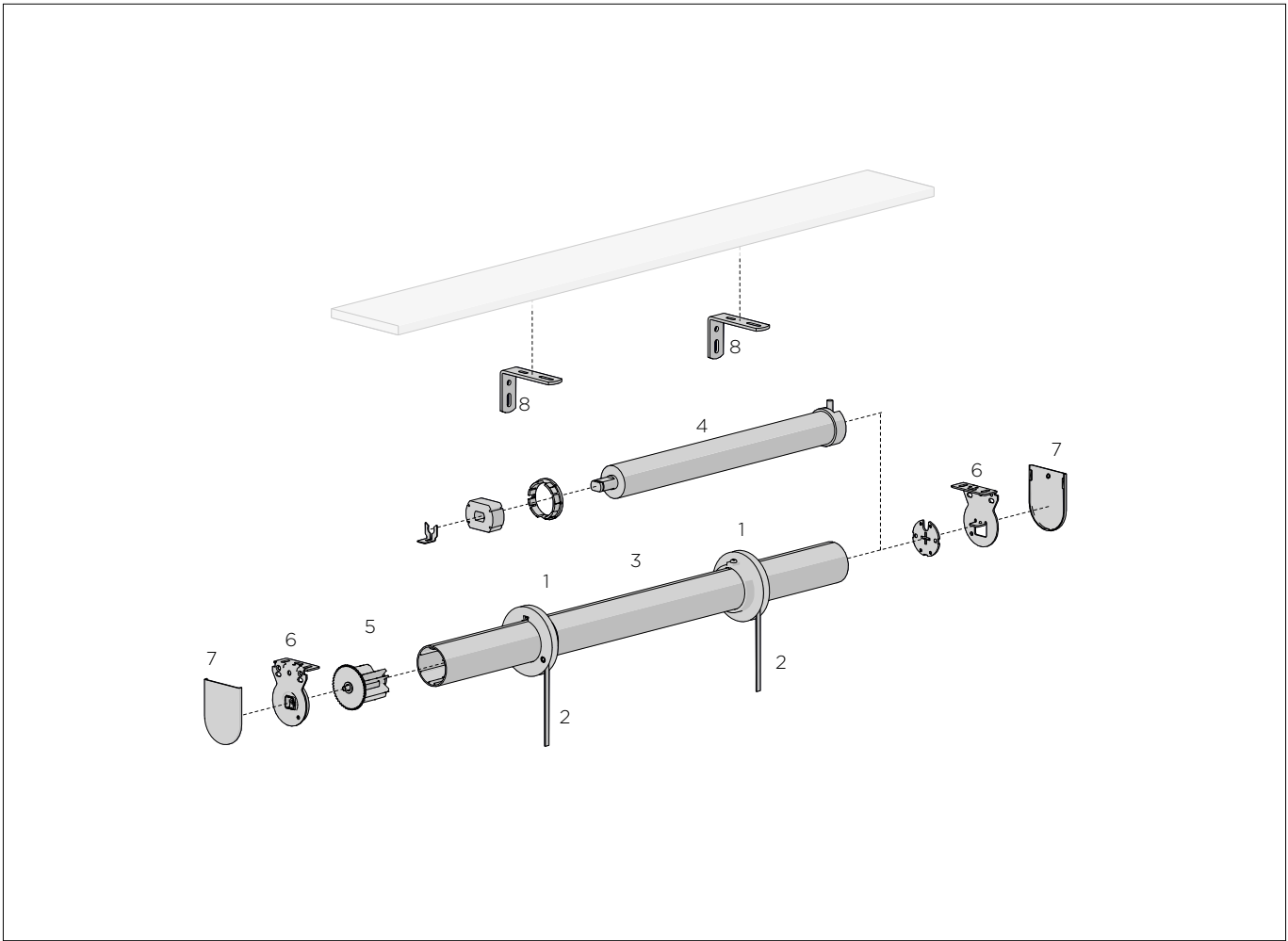
WIDTH	4200	4500	4800
MILL FINISH			

**SPECIFICATIONS**

Customer must specify face or recess fix and provide finished size of head rail.  
 Face fit - Rollease Acmeda to deduct 2mm per end cap.  
 Recess fit - Rollease Acmeda to deduct 2mm per end cap & 4mm for fitting allowance.  
 Please note all accessories are ordered in minimum packs separately (end caps, swivel winders & brackets)  
 All punching costs are net prices and not subject to discount.  
 Cord spacings on fabric must only be set after completed head rail is supplied.  
 All octagonal tubes will be supplied at the same length as the head rail. Customer to trim tube to exact length.  
 Subject to standard terms & conditions for minimum order value F.I.S. prices do not include G.S.T

---

**This page has been left blank intentionally**



COLOUR RANGE



PRODUCT OPTIONS S60 LARGE

**ROMAN LIFT SPOOL** **9**

**ALUMINIUM TUBE S60** **10**

**M50 UNIVERSAL MOTOR BRACKET** **11**

**RB10 BEARING IDLER/END PLUG** **12**

**RB10 TUBE ADAPTOR S60** **13**

**RB10 IDLER BRACKET KIT S60** **14**

**AUTOMATE ACCESSORIES (REFER ROLLER S60 MOTORIZED SYSTEM)**

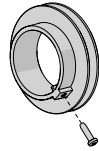
**AUTOMATE HUB**

**AUTOMATE CONTROLS**

**ROMAN LIFT SPOOL S45 | 44 STD**  
+ Screw

1

CODE.	SS48-1043-066060
PACK.	10   80 Sets

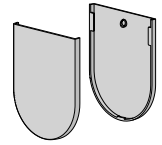


COLOUR. Off White 066  
USE WITH. S45 STD Aluminium Tube, Woven Lift Tape 5.5mm, Braided Cord 1.8mm

**VX/LX BRACKET COVER CAPS | S40/45**  
40 & 55mm Projection

7

SIZE.	40mm Projection	55mm Projection
CODE.	RB08-4151-xxx040	RB08-4151-xxx055
PACK.	25   1000 Pairs	25   1000 Pairs



COLOUR. Black 050, Pure White 069, Sandstone 269, Barley 283, Silver Grey 338  
USE WITH. Easy-Lock Chain Winder Brackets 40 & 55mm projection - VX/LX

**SOFT LIFT TAPES**  
Woven Lift Tape | 5.5mm

2

CODE.	SS95-3217-062005
PACK.	200   1000 Metres

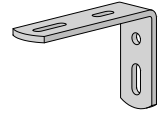


COLOUR. Snow White 062  
USE WITH. S45 & S60 Roman Lift Spool

**INSTALLATION BRACKET**  
40 x 75mm

8

CODE.	VA01-1607-062075
PACK.	400   5200 Pcs

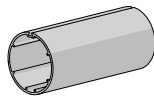


COLOUR. Snow White 062  
USE WITH. 60mm Timber Head Board

**T-SPLINE ALUMINIUM TUBE | S45 | STANDARD**  
O.D 44.0mm x 5.8m Length

3

TYPE.	Powder Coated
CODE.	RB93-0444-066580
PACK.	2   20 Lengths

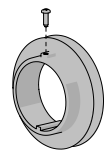


COLOUR. Off White 066  
USE WITH. S45 Roman Lift Spool, T - Spline, Automate motor, Easy-Lock Auto Idler S45

**ROMAN LIFT SPOOL S60 | 60STD**  
+ Screw

9

CODE.	SS48-1060-066090
PACK.	10   80 Sets



COLOUR. Off White 066  
USE WITH. S60 | 60STD Alum. Tube, Braided Cord 1.8mm, Woven Lift Tape 5.5mm

**AUTOMATE | E6 6NM MOTOR**  
[Ø35/240V/28rpm]

4a

CODE.	MT01-1135-069001
PACK.	1   6 Pcs

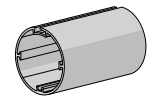


COLOUR. Pure White 069  
USE WITH. M40 Brackets, Aluminium Tube S45

**ALUMINIUM TUBE S60 | 60STD**  
O.D 60.0mm x 5.8mt Length

10

TYPE.	Powder coated
CODE.	RB91-0260-066580
PACK.	2   18 Lengths



COLOUR. Off White 066  
USE WITH. S60 | 60STD Roman Lift Spool

**AUTOMATE | ML 6NM MOTOR**  
[Ø35/240V/28rpm]

4b

CODE.	MT01-1035-069003
PACK.	1   8 Pcs

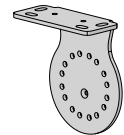


COLOUR. Pure White 069  
USE WITH. M40 Brackets, Aluminium Tube S45

**M50 UNIVERSAL MOTOR BRACKET | S60**  
Universal Fix

11

SIZE.	60mm	80mm
CODE.	RB56-7103-xxx060	RB56-7103-xxx080
PACK.	10   120 Pcs	5   40 Pcs



COLOUR. Black 050, Pure White 069  
USE WITH. M50 Adaptor, M50 Brkt Cover, M50 Somfy Star Head 50 Motor Adaptor

**AUTOMATE | LI-ION 6NM MOTOR**  
[Ø35/6.0Nm/24RPM] 5V

4c

CODE.	MT01-1335-069002
PACK.	1   8 Pcs

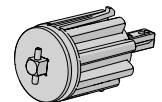


COLOUR. Pure White 069  
USE WITH. M40 Brackets, Aluminium Tube S45

**RB10 BEARING IDLER/END PLUG | S60**

12

CODE.	RB10-6200-xxx001
PACK.	5   50 Pcs

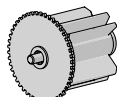


COLOUR. Black 050, Pure White 069  
USE WITH. RB10 Tube Adaptor, RB10 Idler Bracket Kit

**EASY-LOCK AUTO IDLER | S45**

5

CODE.	RB08-0501-xxx043
PACK.	25   200 Pcs

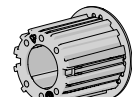


COLOUR. Black 050, Pure White 069, Sandstone 269, Barley 283, Silver Grey 338  
USE WITH. Aluminium Tube S45, Easy-Lock Installation Brackets VX & LX

**RB10 TUBE ADAPTOR | S60**

13

TYPE.	60STD Tube	80HD Tube
CODE.	RB10-6000-xxx060	RB10-6000-xxx080
PACK.	5   200 Pcs	5   100 Pcs

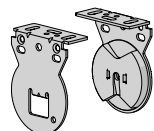


COLOUR. Black 050, Pure White 069  
USE WITH. RB10 Winder Body, RB10 Idler Head

**EASY-LOCK VX/LX INSTALLATION BRACKET | S40/45**  
40 & 55mm Projection

6

TYPE.	VX - 40mm Proj.	LX - 55mm Proj.
CODE.	RB08-8351-xxx040	RB08-8353-xxx055
PACK.	25   200 Sets	25   200 Sets

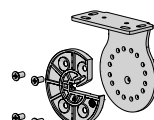


COLOUR. Black 050, Pure White 069, Sandstone 269, Barley 283, Silver Grey 338  
USE WITH. S40/45, Bracket Cover Caps VX/LX

**RB10 IDLER BRACKET KIT | S60**  
Universal Fix

14

TYPE.	60mm
CODE.	RB10-6500-xxx001
PACK.	5   50 Kits

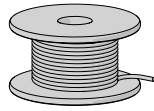


COLOUR. Black 050, Pure White 069  
USE WITH. RB10 Idler Head, RB10 Bracket Cover Cap

**BRAIDED CORD**

1.8mm/16ply

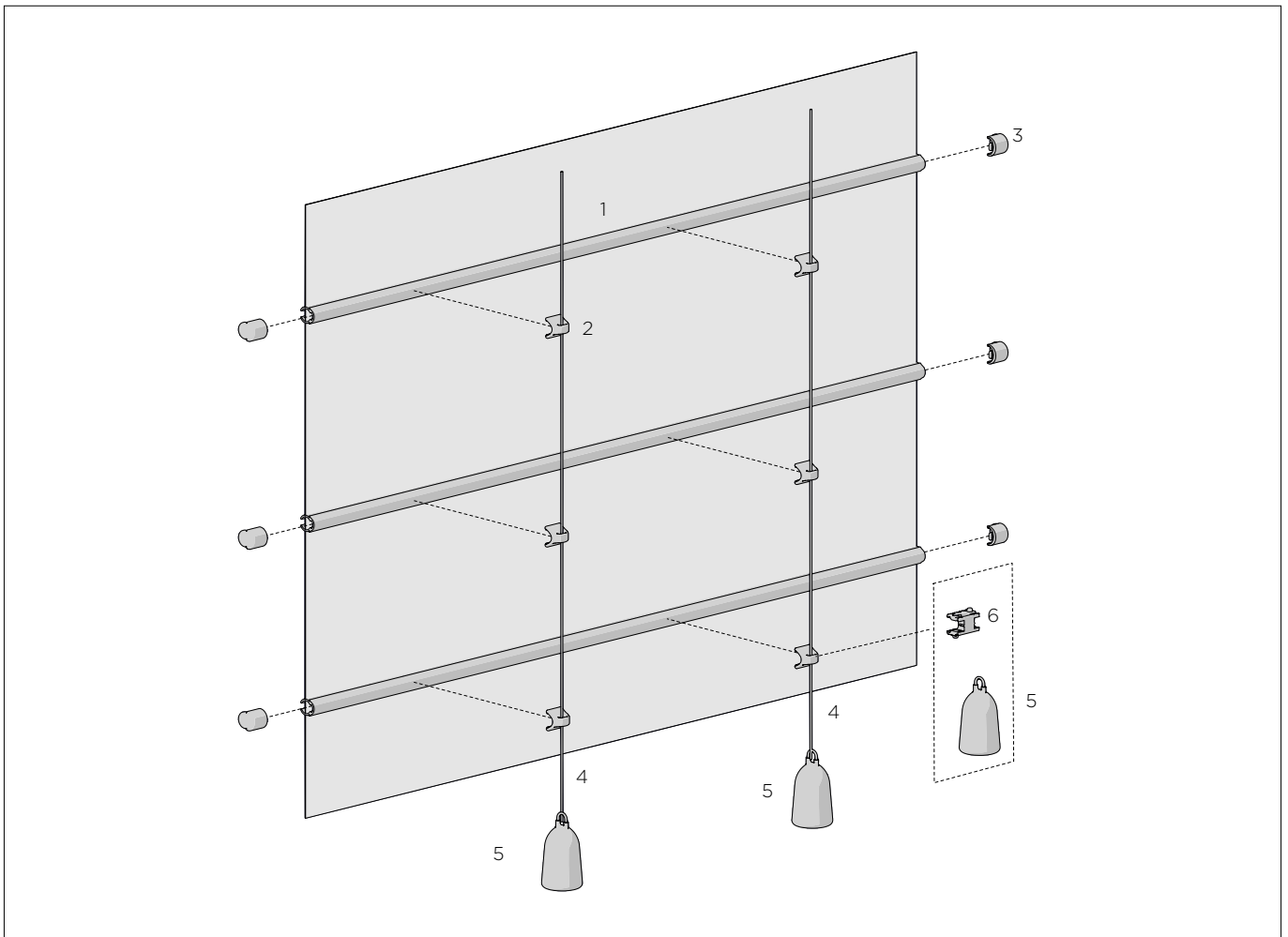
TYPE.	1 Roll = 500 metres
CODE.	AC01-1816-062500
PACK.	500   6000 Metres



COLOUR. Snow White 062  
 USE WITH. S60 Roman Lift Spool

---

**This page has been left blank intentionally**



COLOUR RANGE



Off White

PRODUCT OPTIONS

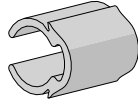
**BATTEN TIE OFF CLIP** 6

**MACRO ROMAN ALUMINIUM BATTEN**

1

9/6.5mm x 4.8mt Length

CODE.	SS91-7002-069480
PACK.	50   750 Lengths



COLOUR. Pure White 069  
USE WITH. Macro Batten Clip, Macro End Cap, Micro Batten Clip

**MACRO ROMAN BATTEN - CORD CLIP**

2

CODE.	SS91-7012-069000
PACK.	1000   20000 Pcs

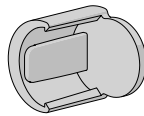


COLOUR. Pure White 069  
USE WITH. Macro Batten

**MACRO ROMAN BATTEN - END CAP**

3

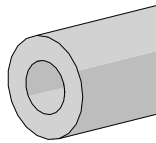
CODE.	SS91-7021-069000
PACK.	500   20000 Pcs



COLOUR. Pure White 069  
USE WITH. Macro Batten

**RIGID ROUND SPLINE**

4.8mt Length



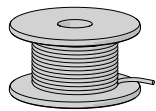
SIZE.	2.5mm	3.1mm	4.0mm
CODE.	SS91-5125-001480	SS91-5131-001480	SS91-5140-001480
PACK.	100   1000 Lengths	100   1000 Lengths	100   1000 Lengths

COLOUR. Clear 001  
USE WITH. Macro Batten

**BRAIDED CORD**

1.8mm/16ply

TYPE.	1 Roll = 500 metres
CODE.	AC01-1816-062500
PACK.	500   6000 Metres

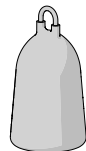


COLOUR. Snow White 062  
USE WITH. S60 Roman Lift Spool

**LIFT CORD BELL WEIGHT**

5

CODE.	SS31-4101-062000
PACK.	100   400 Pcs

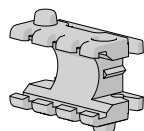


COLOUR. Snow White 062  
USE WITH. Cord Ballast Pinnacle, Ballast Hook for Tie Off Clip, Braided Cord

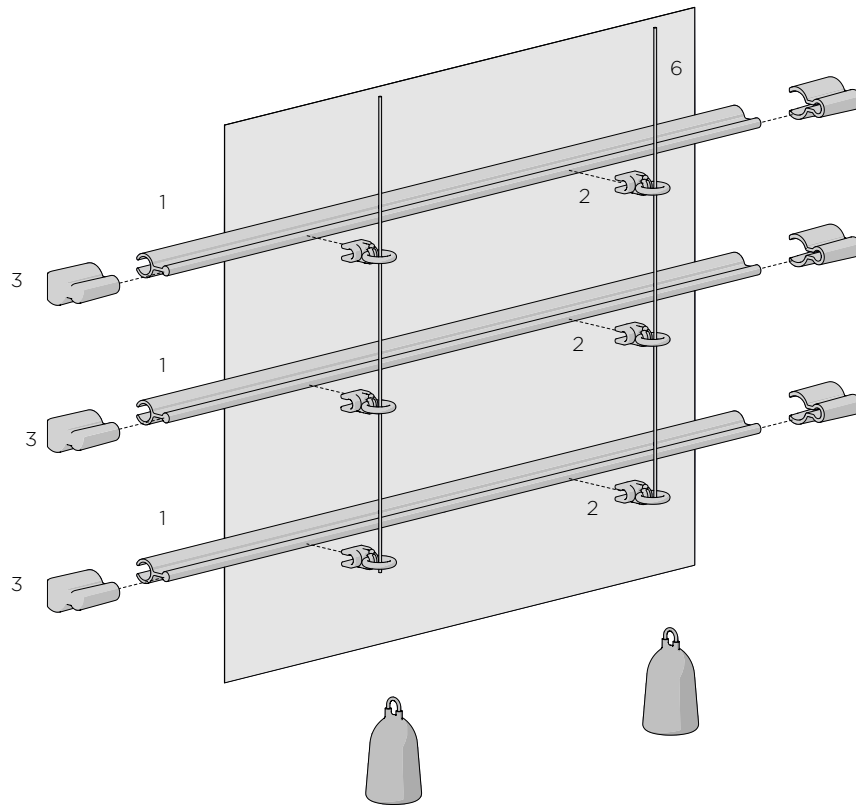
**BATTEN TIE OFF CLIP**

6

CODE.	SS91-4021-069000
PACK.	1000   10000 Pcs



COLOUR. Pure White 069  
USE WITH. Macro Batten, Braided Cord



COLOUR RANGE



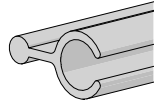
Off White

**INTERMEDIATE ROMAN ALUMINIUM BATTEN**

1

5mm x 4.3mt Length

CODE.	SS91-5005-066430
PACK.	50   600 Lengths



COLOUR. Off White 066  
USE WITH. Clip & Ring, End Cap Ring

**INTERMEDIATE CLIP - 3MM**

2

CODE.	SS91-4001-060000
PACK.	1000   20000 Sets



COLOUR. Natural White 060  
USE WITH. Intermediate Batten, Lift Cord Bell Weight

**INTERMEDIATE END CAP**

3

CODE.	SS91-5051-066000
PACK.	500   5000 Pcs

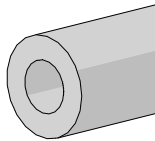


COLOUR. Off White 066  
USE WITH. Intermediate Batten

**RIGID ROUND SPLINE**

4.8mt Length

-



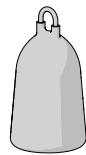
SIZE.	2.5mm	3.1mm	4.0mm
CODE.	SS91-5125-001480	SS91-5131-001480	SS91-5140-001480
PACK.	100   1000 Lengths	100   1000 Lengths	100   1000 Lengths

COLOUR. Clear 001  
USE WITH. Intermediate Batten

**LIFT CORD BELL WEIGHT**

5

CODE.	SS31-4101-062000
PACK.	100   400 Pcs



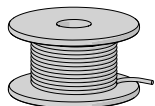
COLOUR. Snow White 062  
USE WITH. Braided Cord

**BRAIDED CORD**

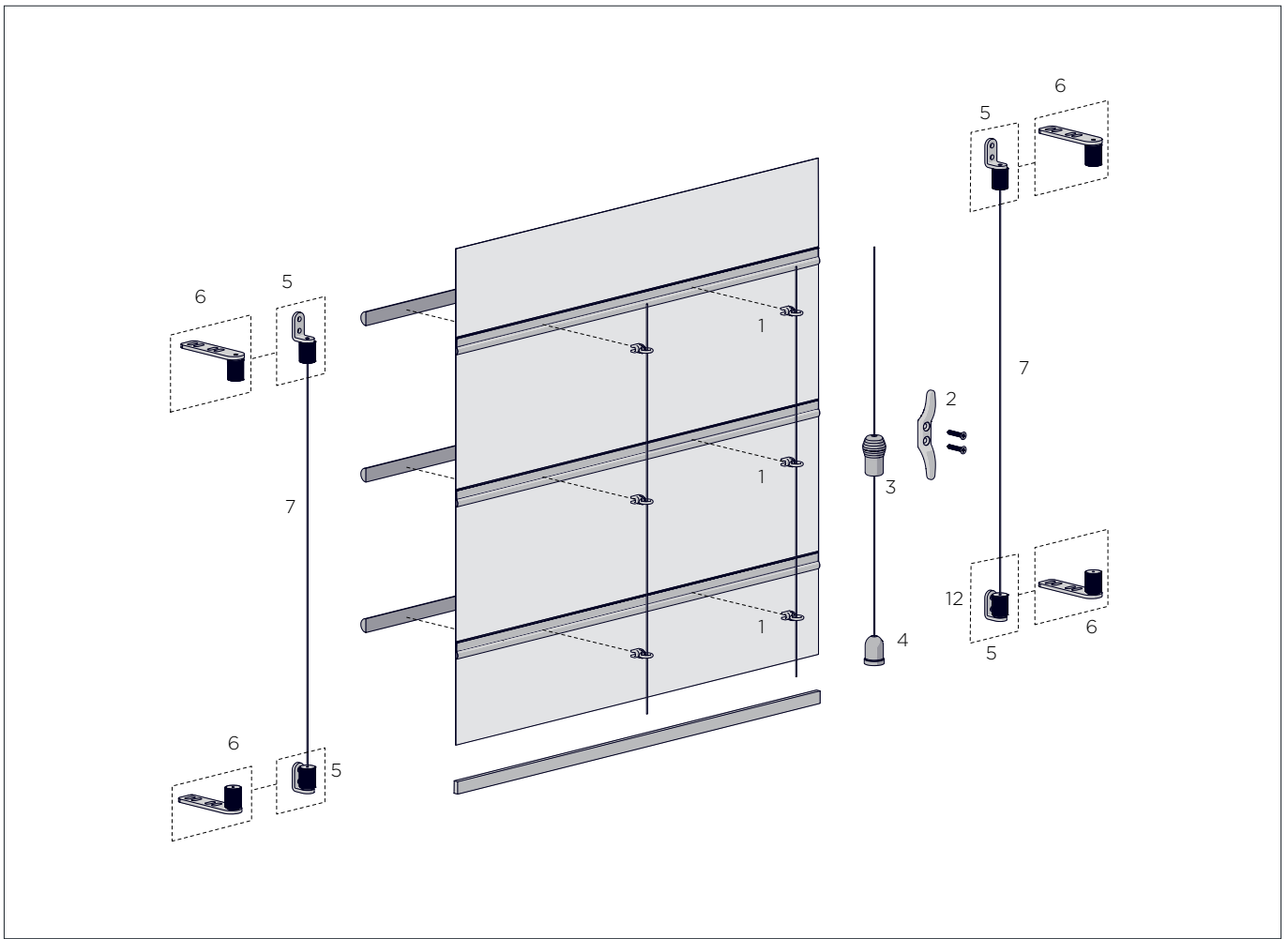
1.8mm/16ply

6

TYPE.	1 Roll = 500 metres
CODE.	AC01-1816-062500
PACK.	500   6000 Metres



COLOUR. Snow White 062  
USE WITH. S60 Roman Lift Spool



COLOUR RANGE

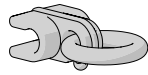


Natural White

**INTERMEDIATE CLIP & RING - 3MM**

1a

CODE.	SS91-4001-xxx000
PACK.	1000   20000 Sets



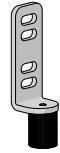
COLOUR. Black 050, Natural White 060  
USE WITH. 3.15mm Steel Stiffening Rod

**TENSIONING WIRE STOPPER + ADJUSTER**

5b

Base 40/50 | Face/Wall Fix

CODE.	RB91-3121-xxx000
PACK.	10   100 Sets

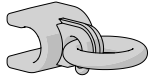


COLOUR. Pure White 069, Silver Nickel Plated 024  
USE WITH. Wire Guide Tensioning Cable

**INTERMEDIATE CLIP & RING - 5MM**

1b

CODE.	SS91-4002-060000
PACK.	1000   20000 Sets



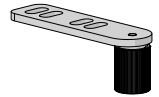
COLOUR. Natural White 060  
USE WITH. 3.15mm Steel Stiffening Rod

**TENSIONING WIRE STOPPER + ADJUSTER**

6

Base 40/50 | Top/Ceiling Fix

CODE.	RB91-3120-xxx000
PACK.	10   100 Sets



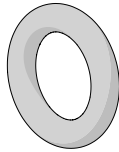
COLOUR. Pure White 069, Silver Nickel Plated 024  
USE WITH. Wire Guide Tensioning Cable

**O RING**

Plastic | 8mm

1c

CODE.	SS91-4121-xxx008
PACK.	1000   40000



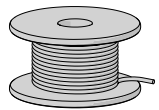
COLOUR. Clear 001, Natural White 060

**TENSIONING CABLE WIRE GUIDE**

7

1 Roll = 50Lm

SIZE.	1.2mm
CODE.	RB91-3602-010012
PACK.	50   300 Metres



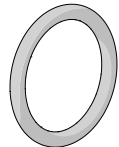
COLOUR. Stainless Steel 010  
USE WITH. Tension Stopper + Adjuster, Crimping Clip

**O RING**

Metal | 15mm

1d

CODE.	SS91-4123-040000
PACK.	1000   20000 Pcs

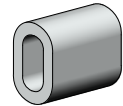


COLOUR. Brass 040

**TENSIONING CABLE CRIMPING CLIP**

-

SIZE.	6mm
CODE.	RB91-3611-020010
PACK.	100   1000 Pcs



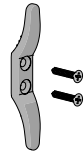
COLOUR. Silver 020  
USE WITH. Wire Guide Tensioning Cable

**PLASTIC CORD CLEAT & SCREWS**

80mm

2

TYPE.	clear 001
CODE.	SS91-3411-001080
PACK.	100   2000 Sets



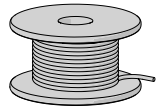
USE WITH. Braided Cord

**BRAIDED CORD 0.9MM | 16PLY**

10a

1 Roll = 1,000 Lm

CODE.	AC01-0916-062100
PACK.	1000   20000 Metres



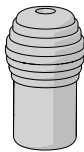
COLOUR. Snow White 062

**ACORN TASSEL WOODEN**

Honey Ribbed

3

CODE.	VB05-3301-910000
PACK.	100   2500 Pcs



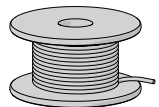
COLOUR. Natural 910  
USE WITH. Braided Cord

**BRAIDED CORD 1.4MM | 16PLY**

10b

1 Roll = 500 Lm

CODE.	AC01-1416-062500
PACK.	500   10000 Metres



COLOUR. Snow White 062

**2 PIECE PLASTIC CORD CONNECTOR**

Clip on Bell

4

CODE.	VB01-2305-062000
PACK.	500   10000 Sets



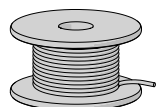
COLOUR. Snow white 062  
USE WITH. Braided Cord

**BRAIDED CORD 1.8MM | 16PLY**

10c

1 Roll = 500 Lm

CODE.	AC01-1816-xxx500
PACK.	500   6000 Metres



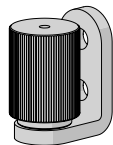
COLOUR. Snow White 062, Smokey 310

**TENSIONING WIRE STOPPER + ADJUSTER**

Face/Wall Fix

5a

CODE.	SS31-3101-020000
PACK.	10   100 Sets



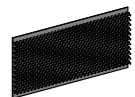
COLOUR. Silver 020  
USE WITH. Wire Guide Tensioning Cable

**TOUCH TAPE SEW-ON | LOOP 25MM**

-

1 Roll = 25Lm

CODE.	HD31-0125-060025
PACK.	1   10 Rolls

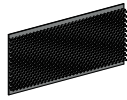


COLOUR. Natural White 060  
USE WITH. Touch Tape Hook

**TOUCH TAPE | SEW-ON | HOOK 25MM**

1 Roll = 25Lm

CODE.	HD31-0225-060025
PACK.	1   10 Rolls



COLOUR. Natural White 060  
USE WITH. Touch Tape Loop

**WOVEN LIFT TAPE**

1 Roll = 200Lm

SIZE.	5.5mm
CODE.	SS95-3217-062005
PACK.	200   1000 Metres



COLOUR. Snow White 062

**PE WOVEN LIFT TAPE | 8MM**

1 Roll = 100Lm

TYPE.	Clear ring
CODE.	SS95-3301-001008
PACK.	100   1000 Metres



COLOUR. Clear 000, Snow White 062

**SAFETY WARNING DEVICE**

Hang Tag & Fastening Tie

*· Price not subject to group discount*

CODE.	HD91-0105-000002
PACK.	250   5000 Pcs



USE WITH. Rotation Chain - Plastic or Metal

**SAFETY WARNING DEVICE**

Packaging Sticker Label

*· Price not subject to group discount*

CODE.	HD91-0116-000001
PACK.	500   5000 Pcs

