

# PRECISION TEST HOIST

8015|series

# PRECISION TEST HOIST

## 8015|series



THE ACMEDA PRECISION TEST HOIST ENABLES MANUFACTURERS TO TEST BLINDS ACCURATELY & RELIABLY, IMPROVING PRODUCTIVITY.

THE HOIST IS COMPLETELY MAINTENANCE FREE, AND AVAILABLE IN THREE OPTIONS FROM MANUAL TO FULLY AUTOMATED VERSIONS.

ALL MODELS FEATURE SAFETY MANUAL OVERRIDE FUNCTIONALITY.



### FEATURES

- Robust High Tensile Aluminium Frame
- Chain driven with braking motor
- Heavy Duty automated Cross Arm
- Foot pedal control
- Optional Double Sided Hoist setup available
- Height setting measuring system
- Ergonomic retractable work bench
- Work bench with shelf
- Durable nickel plated parts
- Full 12 month warranty
- Emergency Safety Protection Function

### DIMENSIONS

Height: 5.0mt  
Width: 4.0mt  
Depth: 1.0mt

### BLIND WIDTH CAPACITY

Roller Blinds: 3.7mt  
Venetian Blinds: 5.0mt

### OVERALL DROP CAPACITY

3.8mt to work table  
4.8mt to floor

### BLIND WEIGHT CAPACITY

Manual: 30kgs  
EMS model: 60kgs

# OPTIONS/INCLUSIONS

CHART 1.1

FEATURES	Manual Operation		Semi-Automated Operation [EMS]		Fully-Automated Operation [EMS]
	Roller Blind Setup	Venetian Blind Setup	Roller Blind Setup	Venetian Blind Setup	Roller Blind Setup
Foot Pedal Control	✓	✓	✓	✓	✓
Electronic Measuring System [EMS]	✗	✗	✓	✓	✓
Precision Table Assembly	✓	✓	✓	✓	✓
300mm Backboard	+	+	+	+	+
600mm Backboard	+	+	+	+	+
900mm Backboard	+	+	+	+	+
4mt cross arm	✓	✓	✓	✓	✓
6mt cross arm	+	+	+	+	✗
Indexable Bracket System	✓	+	✓	+	✓
Roman Blind Hoist Bracket	+	+	+	+	✗
Sliding Finger Bracket (Venetian blinds)	+	✓	+	✓	✗
Safety Bracket (Venetian blinds)	+	+	+	+	✗
Intermedaite Bracket assembly	+	✗	+	✗	✗
Material Catch Tray	+	+	+	+	+

- LEGEND**
- ✓ standard inclusion
  - + optional extra
  - ✗ not available

**OPERATING SPEED**

Manual: 5.4 sec. per meter  
 EMS model: 3.0 sec. per meter

**POWER REQUIREMENTS**

240V - 50Hz

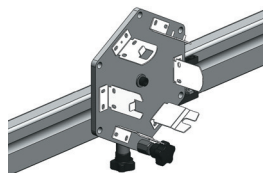
**OPERATING SPEED CONTROL**

Fully Adjustable

## OPTIONS/INCLUSIONS

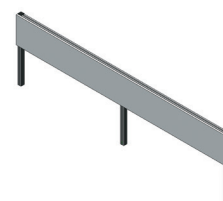
### **Indexable Bracket System** - including:

- six different Roller Blind Bracket types,
- Index Plate (x 2),
- Measuring tape on Cross Arm ( Left - Right & Right - Left ),
- Intermediate Bracket assembly (x1).



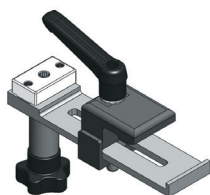
### **300mm Backboard**

is used as a partition as well as being versatile for additional holding containers. Also available in 600mm. (Length: 2400mm)



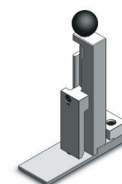
### **Roman Blind Hoist Bracket**

providing a bracket which attaches to the hoist for Roman Blind testing, using a 19mm thick head board. 40 - 90mm width adjustment.



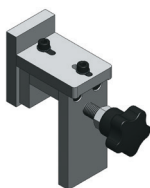
### **Venetian Blind Safety Brackets**

provides extra security ensuring head box is locked into place when testing Venetian Blinds.



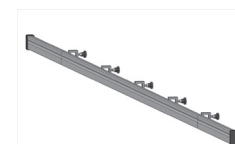
### **Intermediate Bracket Assembly**

allowing for linked blinds to be tested.



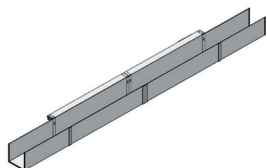
### **6mt Cross Arm Assembly :**

"Hook On" type - used when additional length is required on cross bar.



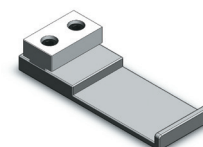
### **Material Catch Tray**

ensuring bottom of blind is protected from the floor.



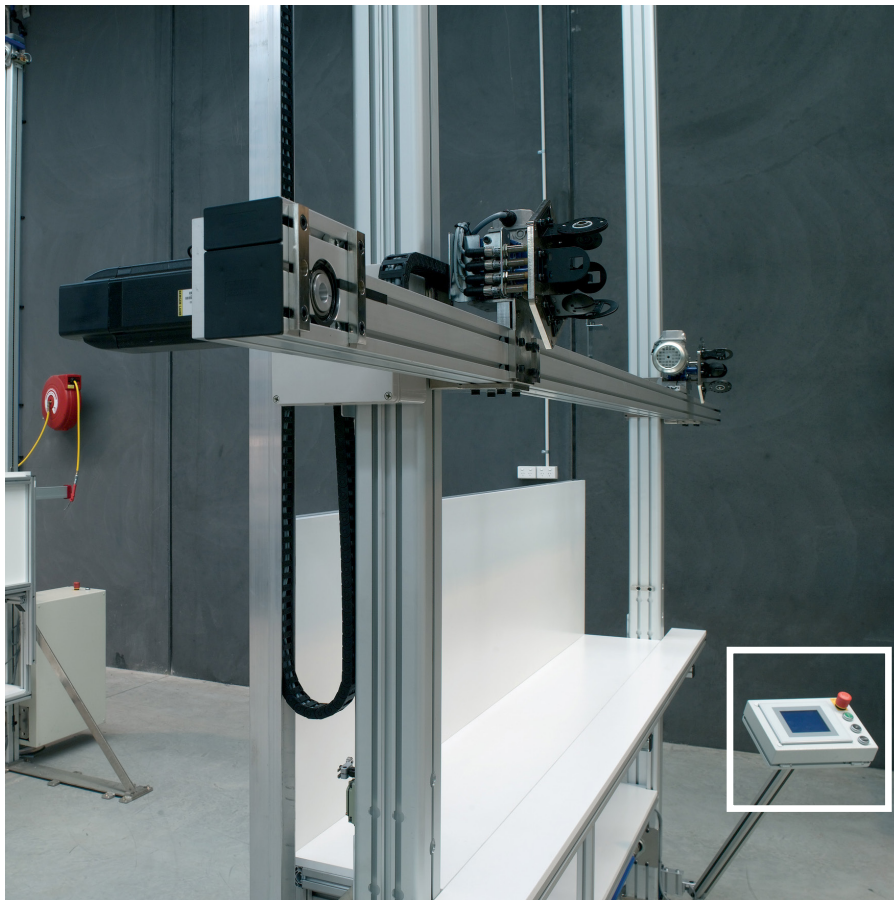
### **Sliding Finger Bracket**

used for mounting Venetian Blinds to be tested.

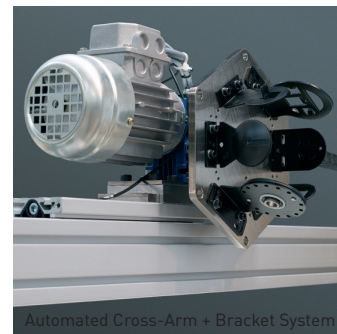


## FULLY-AUTOMATIC [EMS] WITH TOUCH SCREEN CONTROL PANEL

**TOUCH SCREEN CONTROL OPERATION WITH AUTOMATED CROSS ARM (TO PRESET HEIGHT AND WIDTH POSITION) AND BRACKETING SYSTEM (ROTATING BRACKETS TO POSITION). ALSO PROVIDES A CYCLE TEST MODE, FOR DURABILITY AND LIFE TESTING. THE FULLY AUTOMATIC HOIST IS FOR TESTING ROLLER BLINDS ONLY.**



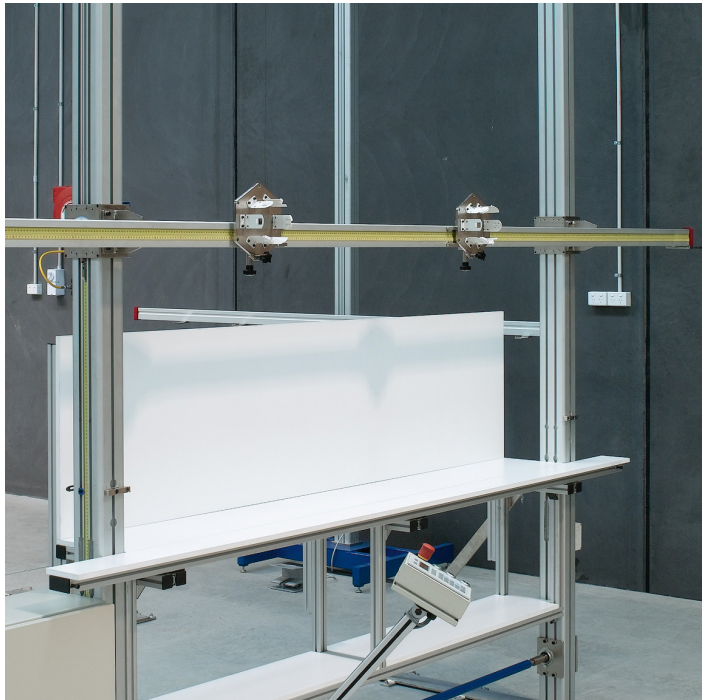
Touch Screen Control Panel [ems]



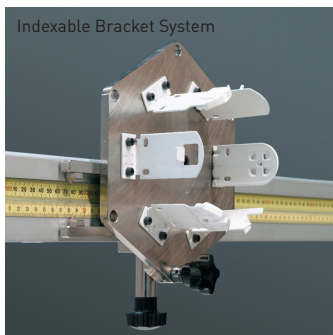
Automated Cross-Arm + Bracket System

## SEMI-AUTOMATIC[EMS]

WITH TOUCH PAD CONTROL PANEL



**TOUCH PAD CONTROL OPERATION FEATURING  
AUTOMATIC HEIGHT PRESET FUNCTION WITH  
INCREMENTAL MOVEMENT ALLOWANCES, FOR  
TESTING ROLLER, ROMAN & VENETIAN BLINDS.  
WIDTH SETTING IS ACHIEVED BY MANUALLY  
ALIGNING USING TAPE MEASURE ON CROSS ARM.**

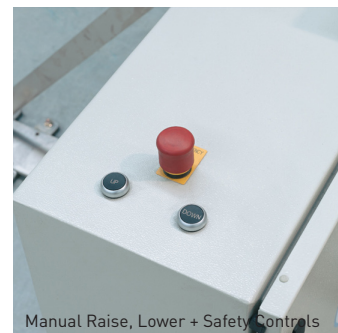
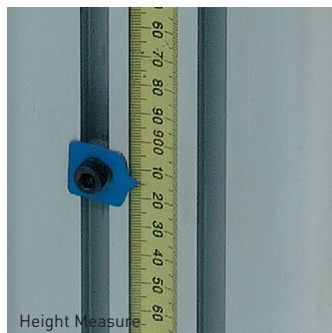


# MANUAL

WITH PUSH BUTTON CONTROL PANEL

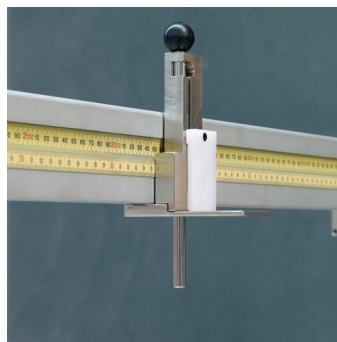


**PUSH BUTTON CONTROL OPERATION FOR TESTING ROLLER, ROMAN & VENETIAN BLINDS. HEIGHT SETTING IS ACHIEVED BY PRESSING BUTTONS AND POSITIONING VIA TAPE MEASURE LOCATED ON SIDE OF PILLAR.**



## VENETIAN BLIND SAFETY BRACKET

**Venetian Setup**  
Semi-automatic [ems] / manual





© Copyright Rollease Acmeda Group  
J#LC765 OCT2015

 **ROLLEASE  
ACMEDA**  
PRECISION IN MOTION

AUSTRALIA | EUROPE | USA  
[rolleaseacmeda.com](http://rolleaseacmeda.com)