

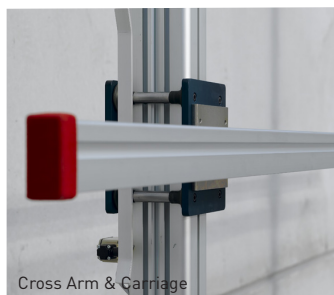


DOUBLE PILLAR TEST HOIST

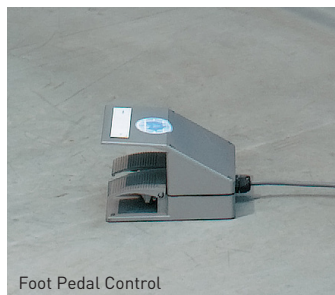
200|series

DOUBLE PILLAR TEST HOIST

200|series



Cross Arm & Carriage



Foot Pedal Control

THE 200|series HOIST HAS BEEN ENGINEERED USING THE HIGHEST STANDARD OF FEATURES, PROVIDING A SIMPLE TO USE MANUAL OPERATION. THE HOIST REQUIRES MINIMAL MAINTENANCE, RESULTING IN A RELIABLE AND EFFICIENT MACHINE.

FEATURES

- Extruded aluminium Heavy Duty Pillars
- 4mt Cross Arm
- Chain driven Double Pillars
- Universal bracket system
- Simple foot pedal operation
- 30kg Blind weight capacity
- 4.7mt drop capacity
- Easy to assemble
- Full 12 month warranty



DIMENSIONS

Height: 5.0mt
Width: 4.0mt
Depth: 0.3mt

BLIND WIDTH CAPACITY

Roller Blinds: 3.7mt
Venetian Blinds: 5.0mt

OVERALL DROP CAPACITY

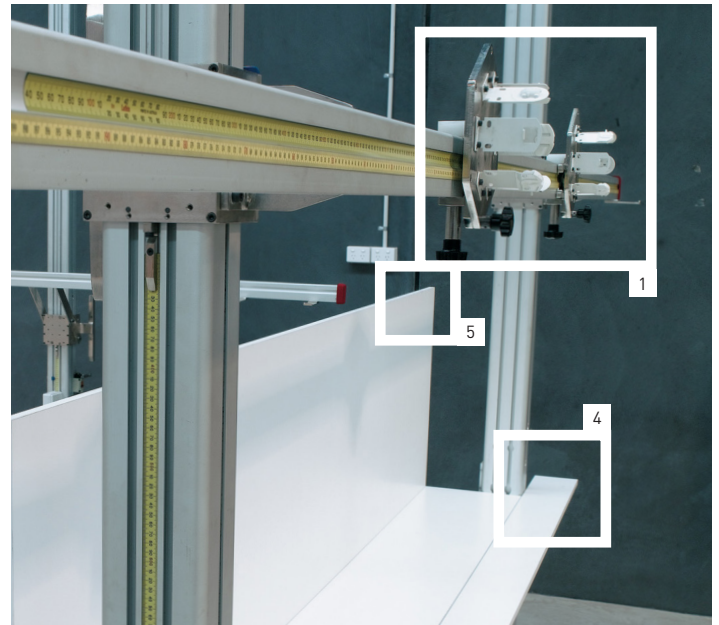
4.7mt to floor

OPERATING SPEED

4 seconds per meter

POWER REQUIREMENTS

240V - 50Hz



OPTIONAL EXTRAS

Indexable Bracket System (1) - including:

- six different Roller Blind Bracket types,
- Index Plate (x2),
- Measuring tape on Cross Arm (Left - Right & Right - Left),
- Intermediate Bracket assembly (x1).

Roman Blind Hoist Bracket (2)

providing a bracket which attaches to the hoist for Roman Blind testing.

Intermediate Bracket Assembly (3)

allowing for linked blinds to be tested.

Precision Table Assembly (4)

providing the addition of a retractable work table.

300mm Backboard (5)

is used as a partition as well as being versatile for additional holding containers. Also available in 600mm.

Safety Brackets (6)

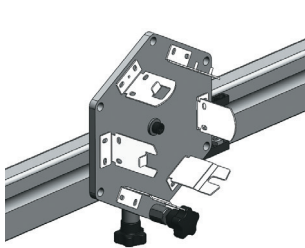
provides extra security ensuring bracket is locked into place when testing Venetian Blinds with head boxes.

6mt Cross Arm Assembly : "Hook On" type (7)

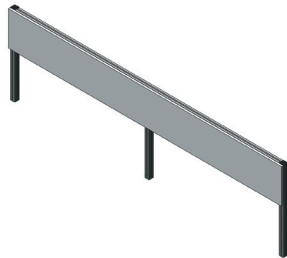
used when additional length is required on cross bar.

Sliding Finger Bracket (8)

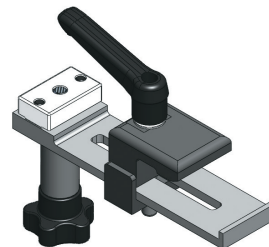
used for mounting Venetian Blinds to be tested.



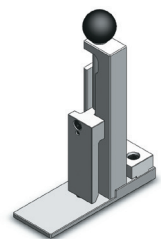
Indexable Bracket System (1)



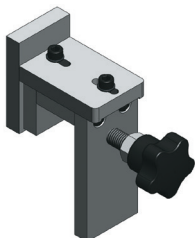
300mm Backboard (5)



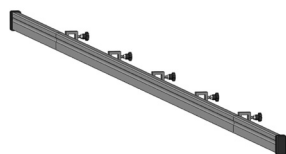
Roman Blind Hoist Bracket (2)



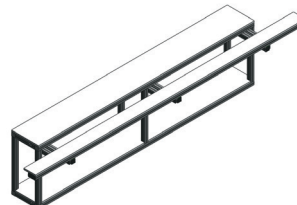
Safety Brackets (6)



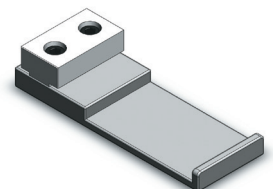
Intermediate Bracket Assembly (3)



6mt Cross Arm Assembly (7)

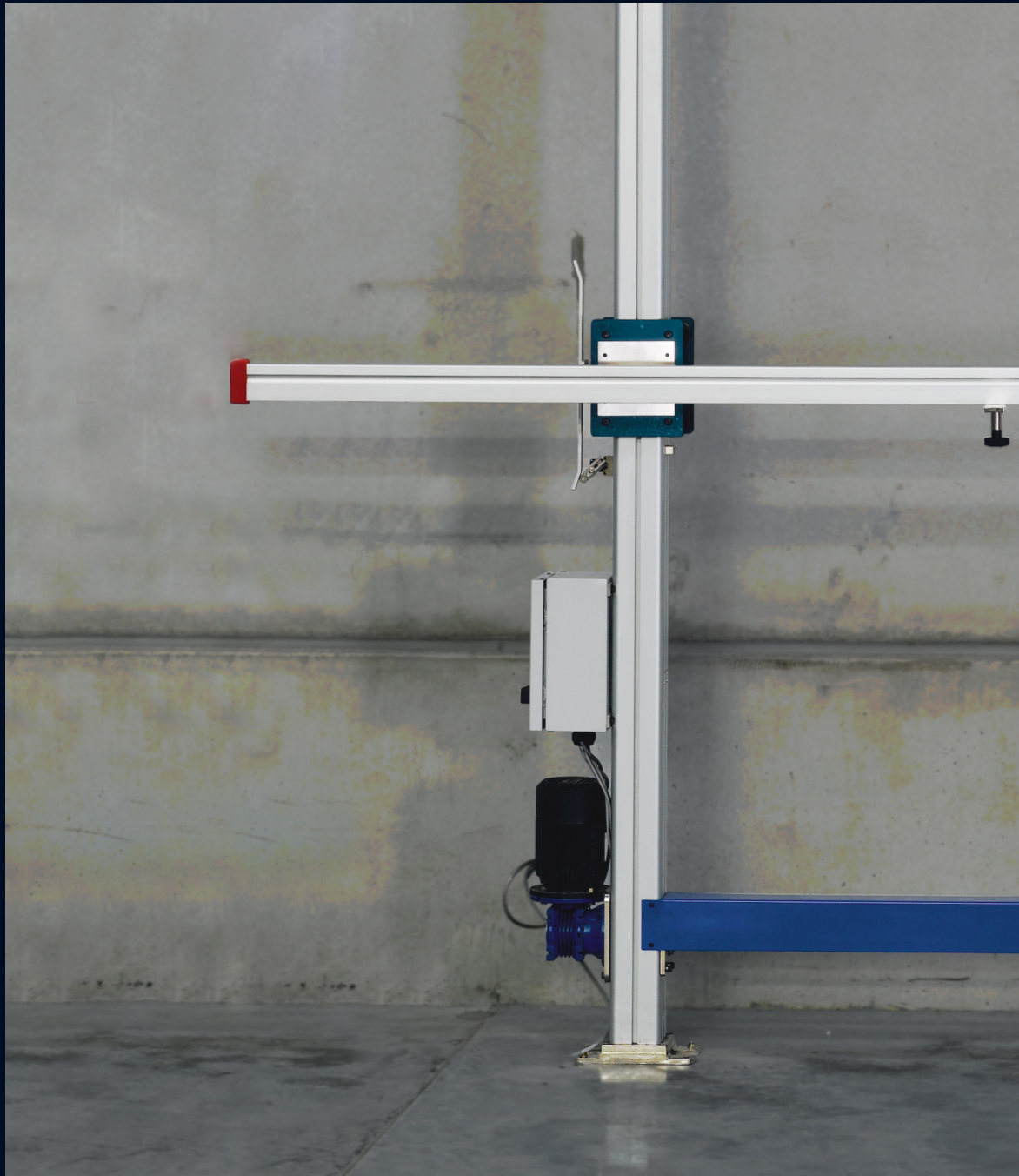


Precision Table Assembly (4)



Sliding Finger Bracket (8)





AUSTRALIA | EUROPE | USA
rolleaseacmeda.com