

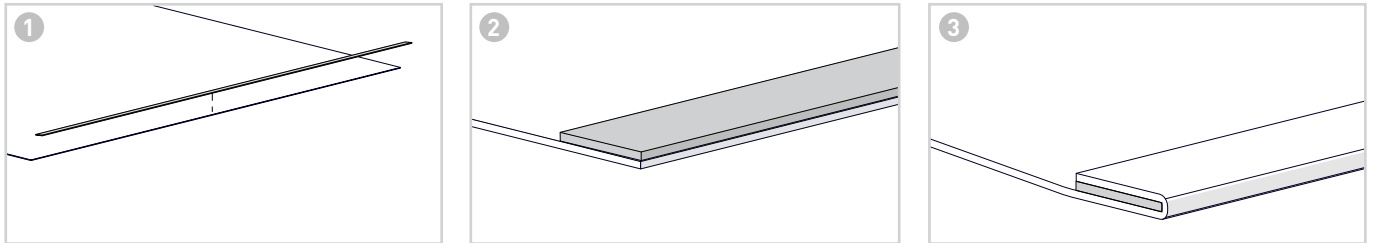
# BOTTOM UP FABRIC WRAP (BU/FW) RAIL | ASSEMBLY

## TOOLS REQUIRED

1. 9mm x 0.75mm ACM Flat Spline - Tape on both Sides
2. 8.7mm x 0.5mm ACM Flat Spline
3. BU/FW Rail Fabric Crease Tool
4. BU/FW Rail Spline Insert Tool
5. Cutter/Scissor

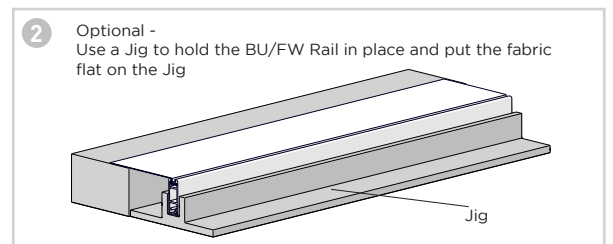
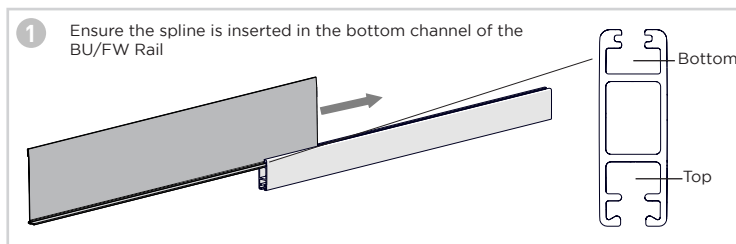
## FABRIC PREPARATION

Attach 9mm x 0.75mm ACM Flat Spline to the fabric

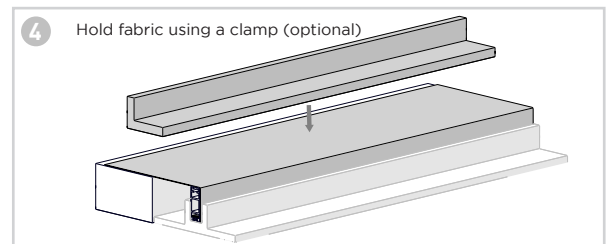
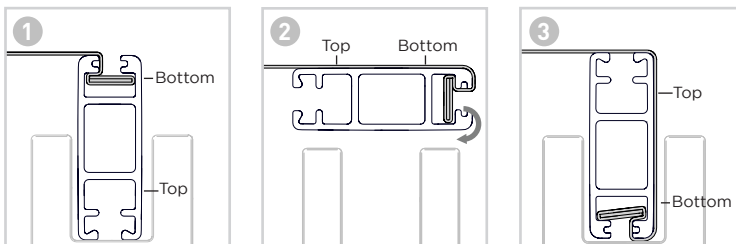


## HALF WRAP ASSEMBLY

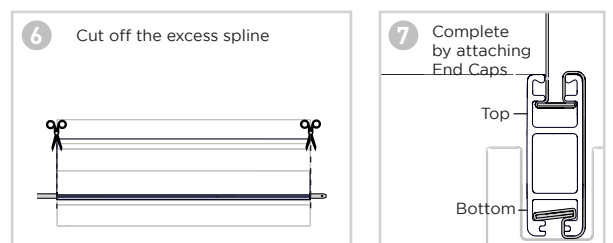
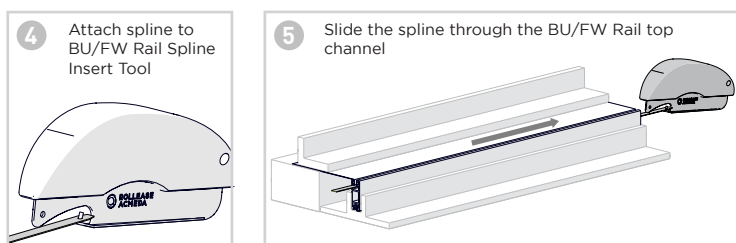
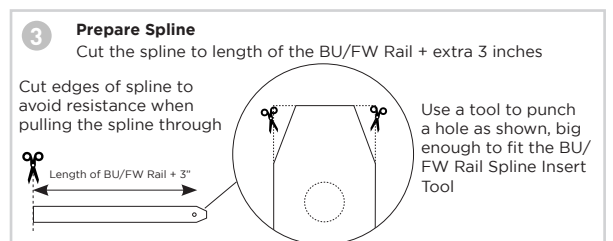
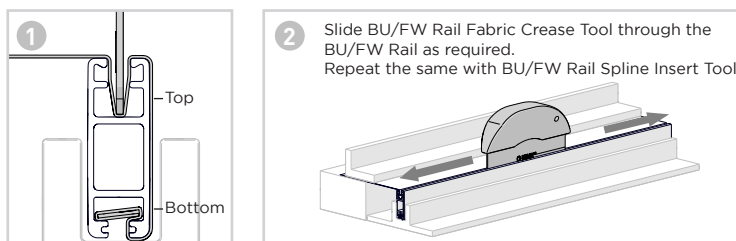
Step 1 - Slide the 9mm flat spline into the BU/FW Rail



Step 2 - Wrap the fabric around the BU/FW Rail

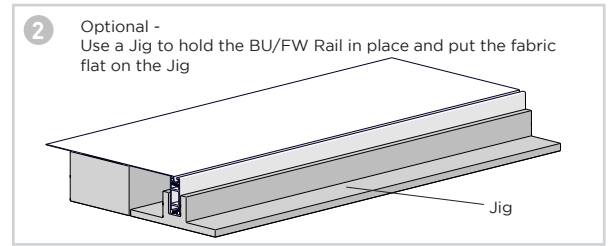
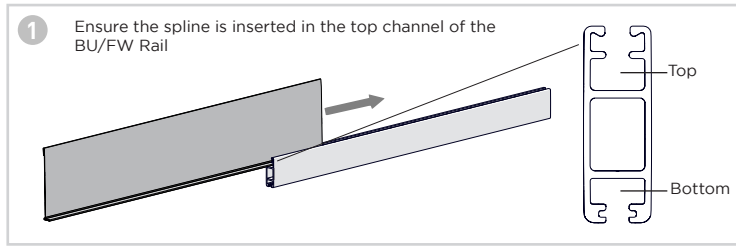


Step 3 - Insert the 8.7mm flat spline into the BU/FW Rail

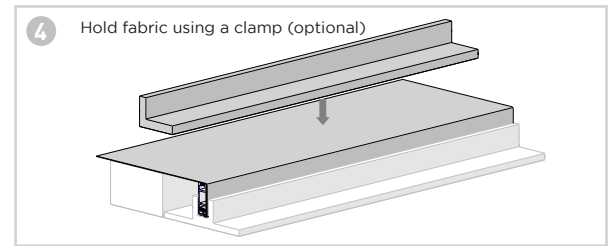
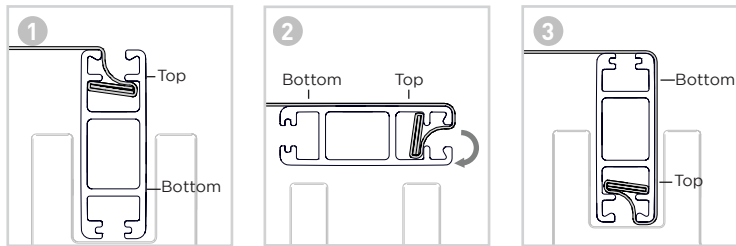


**FULL WRAP ASSEMBLY**

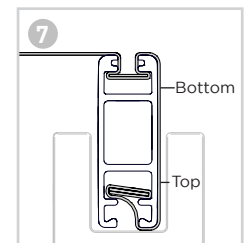
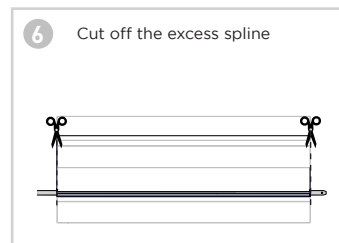
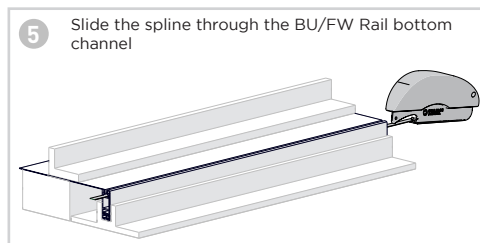
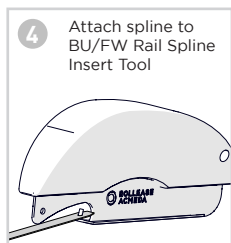
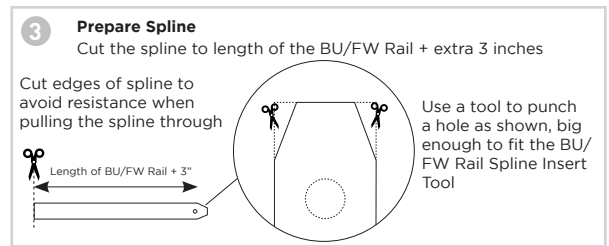
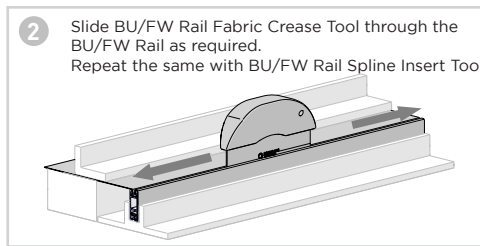
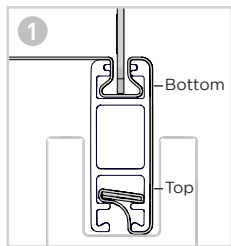
Step 1 - Slide the 9mm flat spline into the BU/FW Rail (refer to fabric preparation)



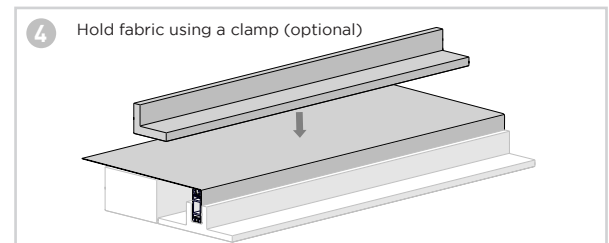
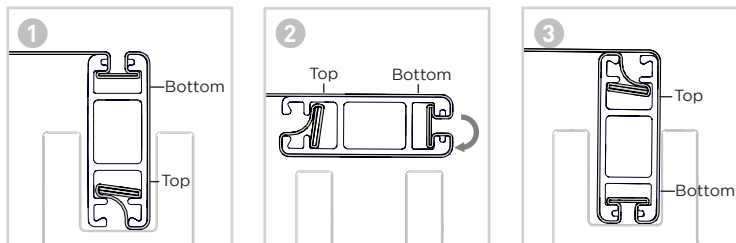
Step 2 - Wrap the fabric around the BU/FW Rail



Step 3 - Insert the 8.7mm flat spline into the BU/FW Rail



Step 4 - Wrap the fabric for second time around the BU/FW Rail



Step 5 - Insert another 8.7mm spline

