




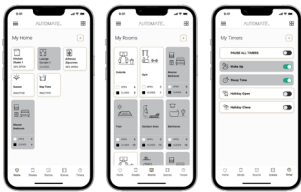


MOTORS | SUMMARY

				Li-ion	DC	AC						
												
KEY FEATURES SUMMARY				SPECIFICATIONS								
				5V ZERO	12V	12V ZERO	240V E6	240V M6				
	SIMPLIFIED RETRO-FIT	Motor can replace a chain winder without modifying the hardware, maintaining a minimal hardware gap.	✓	✓								
	PATENTED MOTOR HEAD DESIGN	Offers the smallest light gap and antenna cable can be concealed within the motor head.	✓	✓								
	INNOVATIVE MOTOR CAP	Optional, custom designed accessory for no visible wires.	✓	✓								
	ELEGANT SOFT STOP	Slows the motor down prior to reaching shade limits, coming to a gradual stop.	✓	✓								
	MICRO USB CHARGING	Custom motor charger not required. Utilise any micro USB cable and charger to renew battery.	✓									
	CONTINUOUS POWER	A continuously powered solution that has three optional 12V power sources.		✓								
	CONTINUOUS POWER	A continuously powered solution connected to the mains 240V electrical grid.							✓			
	BATTERY CHECK	When paired with Push series remotes, motor will move shade to indicate battery percentage remaining.	✓									
	NARROW SHADE WIDTHS	Shades can be made at a minimum width of 432mm and powered using external battery pack for door shading applications.		✓								
	RELIABLE OPERATION	Hardwired installation prevents interference from other devices.								✓		
TORQUE	0.7Nm	✓										
	1.1Nm	✓		✓								
	2.0Nm	✓		✓								
	3.0Nm		✓									
	6.0Nm					✓	✓					
POWER	Lithium-ion Battery	✓	✓									
	DC 12V Low Voltage			✓								
	AC 240V Mains				✓	✓						
FEATURES	Zero Motor Head	✓		✓								
	Motor Cap	✓		✓								
	Quiet	✓		✓								
	Elegant Soft Stop	✓		✓								
	Battery Check Action	✓		✓								
	Micro USB Charging	✓										
	Secure Hold	✓	✓	✓								
	Simplified Retro-Fit	✓		✓								
	Bidirectional Communication	✓	✓	✓	✓							
	Adjustable Speed	✓	✓	✓								
	Simplified Setup	✓	✓	✓	✓							
	Favourite Positioning	✓	✓	✓	✓							
	Precise Limit Adjustment	✓	✓	✓	✓							
Electronic Limit Setting	✓	✓	✓	✓								
Mechanical Limit Setting								✓				
CONTROLS	Push Remotes	✓	✓	✓	✓							
	Pulse PRO	✓	✓	✓	✓							
	Wall Controls	✓	✓	✓	✓							
ACCESSORIES	Solar Panel V2	✓										
	Internal Sun Sensor	✓	✓	✓	✓							
	ARC Repeater	✓	✓	✓	✓							
	ARC Relay Module	✓	✓	✓	✓							
	DC Power Distribution Panel			✓								
	Rechargeable Battery Pack			✓								
	Extension Cables	✓	✓	✓								
	Wall Charger	✓	✓									

HOME AUTOMATION FEATURES

AUTOMATE SHADES APP

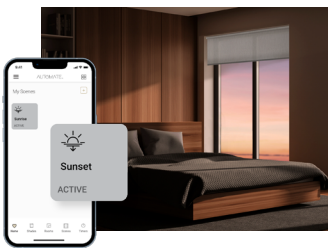


VOICE CONTROL



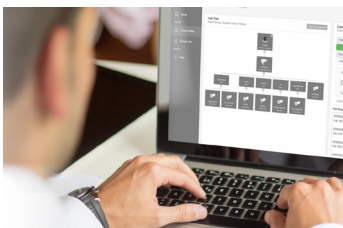
Effortless control of motorised shades when at home or away. Personalise the daily routine via groups, rooms and timers.

SUNSET/SUNRISE TIMERS



Set shades to follow the sun.

LINQ TOOL



Connect to smart home systems.

HOME AUTOMATION | PULSE PRO

- Group Automate shades by room and conveniently control them accordingly.
- Personalise shade control and organise how your shades operate by specific daily events or scenes automatically at the optimal time.
- Roller shades, Drapery, Outdoor Shades, Awnings.... control every shade type from one screen.
- Installers have access to information that assists them identify potential issues.
- The signal indicator highlights when there is no connection between the motor and the hub, to assist with troubleshooting.
- The APP is available in English, Italian, Dutch, French or German.



REMOTE CONTROLS

PUSH SERIES



Push ONE, 5 Channel, 15 Channel & Push PRO Remotes

WALL CONTROLS



1, 2 & 15 Channel Controls

ACCESSORIES | COMMERCIAL

DC POWER DISTRIBUTION PANEL



- Power your Automate DCRF motors from a compact, central location that can service up to 18 motors.
- Easily check each individual motors power status by viewing the prominent green LED's on the DC Power Panel.
- The panel can be used with many different wire types (from 26 to 14 AWG). Any pre-wired installation may readily use DCRF motors and the Power Distribution Panel.

ACCESSORIES | GENERAL

ARC REPEATER



Extend range of ARC Protocols.

INTERNAL SUN SENSOR



Control shades with a choice of preset light thresholds and control modes.

ARC RELAY TRANSMITTER

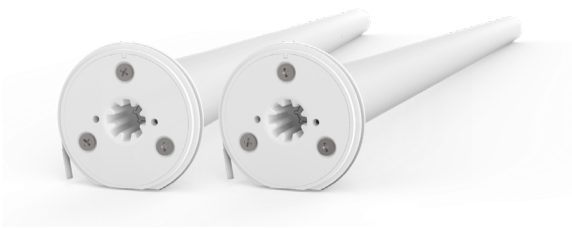


- Provide interface between third party smart home motor systems and ARC motors.
- Three contact inputs - Up, Down & Stop.
- Group Motor Control.
- Wireless control of ARC motors.
- Roller mode and Step mode for venetian motors.
- 12V or 24V power source compatible.

MOTORS | BATTERY

FEATURES & BENEFITS

- Patent ZERO motor head conceals all wires by wrapping them around the head.
- Retro-fit solution, turn manual blinds into motorised shades with ease, simply remove winder, insert motor & operate.
- Soft Stop technology which slows the blind prior to stopping.
- Micro USB 5 volt charging.
- Colour matching motor head cap conceals hardware.
- Long lasting battery - up to 500 cycles per charge.



COLOUR RANGE

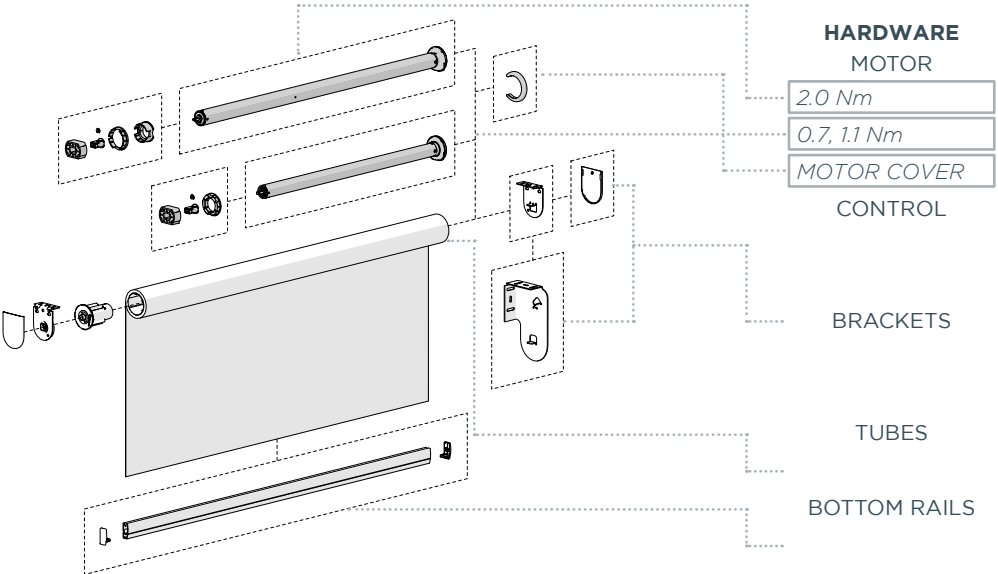
black

pure white

WEB PAGE LINK

MOTOR HARDWARE

5 YEAR WARRANTY



KEY SYSTEM FEATURES

ZERO VISIBLE WIRES

The motor head has a slot which retains the antenna.

Hide the motor head with a colour matched Motor Cap.

RETRO-FIT SOLUTION

Replace a chain control with a ZERO Li-ion motor without having to change any existing hardware.

SOFT STOP

Shade gradually reduces speed when coming to a stop for ultra-smooth movement.

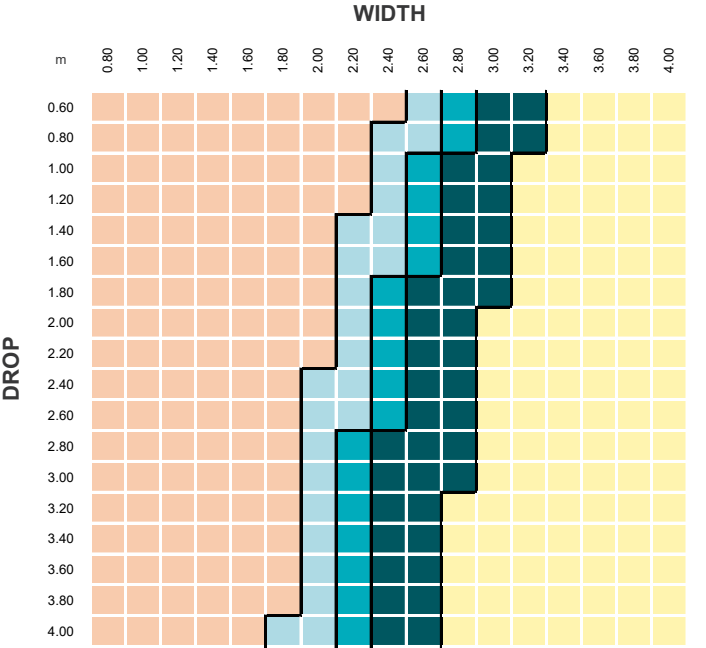
MICRO USB CHARGING

LED behind button will glow to indicate successful charging.

SYSTEM UPGRADES

MOTORS | BAT. SPECIFICATIONS

TUBE CAPACITY

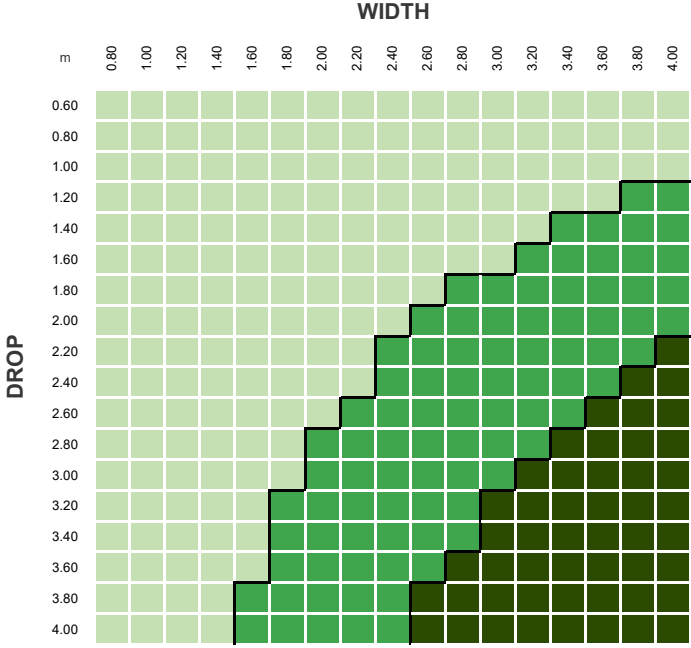


TUBES	
S40 STANDARD	
S45 LIGHT	
S45 STANDARD	
S45 HEAVY DUTY	
LINKED	

PARAMETERS:
FABRIC DENSITY: 390gsm
FABRIC THICKNESS: 0.6mm
WEIGHT BAR: D30 Bottom Rail
TUBE DEFLECTION: 1.05mm/m

NOTE: S40 IS ONLY COMPATIBLE WITH 0.7, 1.1Nm MOTORS

CONTROL CAPACITY



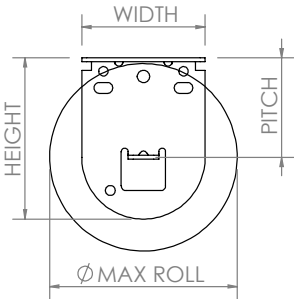
MOTOR	
0.7Nm	
1.1Nm	
2.0Nm 3.0Nm 6.0Nm	

PARAMETERS:
FABRIC DENSITY: 390gsm
FABRIC THICKNESS: 0.6mm
WEIGHT BAR: D30 Bottom Rail
TUBE DEFLECTION: 1.05mm/m

LIFTING CAPACITY	TUBE			
	S40 STD	S45 LT	S45 STD	S45 HD
0.7Nm	3.7kg	3.3kg	3.2kg	2.9kg
1.1Nm	5.8kg	5.2kg	5.1kg	4.6kg
2.0Nm	-	9.4kg	9.2kg	8.3kg

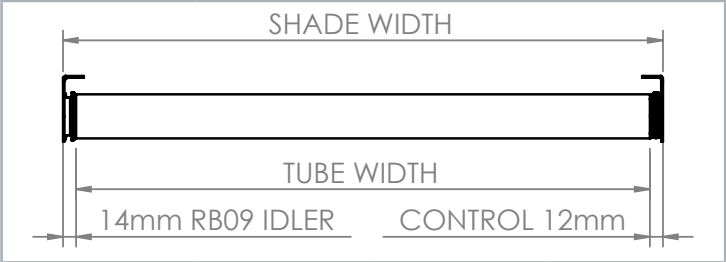
TECHNICAL DATA

SINGLE BRACKETS	SPECIFICATIONS			MAX ROLL
	PITCH	WIDTH	HEIGHT	
AX	40mm	40mm	60mm	75mm
	55mm	40mm	75mm	105mm
VX/LX	40mm	50mm	65mm	75mm
LX	55mm	50mm	80mm	105mm



CONTROL OPTIONS	MINIMUM SHADE WIDTH (no covers)	TUBE DEDUCTIONS	
		NO BRACKET COVERS	WITH BRACKET COVERS
ZERO 0.7Nm	569mm	26mm	*28mm
ZERO 1.1Nm	642mm		
ZERO 2.0Nm	739mm		

***Add +1mm to deductions for Motor Cover installations.**
TUBE WIDTH = SHADE WIDTH - [CONTROL + IDLER]
Minimum Shade Width based on 5mm gap between hardware in tube.



DOUBLE BRACKETS	MAX ROLL	SLIM PROFILE TOP-FRONT Fabric Roll Options	SLIM PROFILE TOP-BACK Fabric Roll Options	SQUARE-X Fabric Roll Options	SLIMLINE-X Fabric Roll Options
SLIM PROFILE/SQUARE-X	70mm				
SLIMLINE-X	65mm				

MOTORS | DC

FEATURES & BENEFITS

- Low voltage continuous powered.
- Multiple power options: Power Supply, DC Power Panel, Battery Pack.
- Patent ZERO motor head conceals all wires by wrapping them around the head.
- Retro-fit solution, turn manual blinds into motorised shades with ease, simply remove winder, insert motor & operate.
- Soft Stop technology which slows the blind prior to stopping.
- Colour matching motor head cap conceals hardware.
- Smallest motorised blind width.



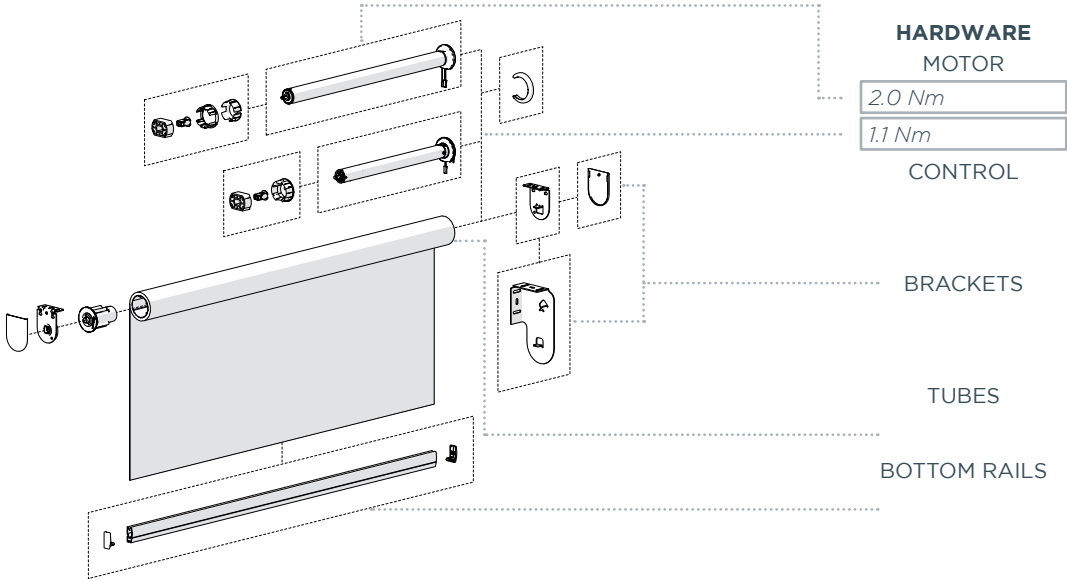
COLOUR RANGE

pure white

WEB PAGE LINK

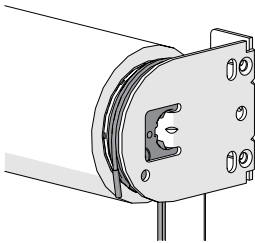
MOTOR HARDWARE

7 YEAR WARRANTY

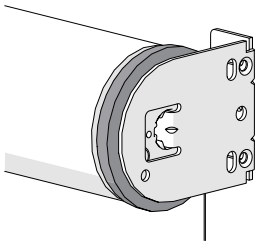


KEY SYSTEM FEATURES

ZERO VISIBLE WIRES

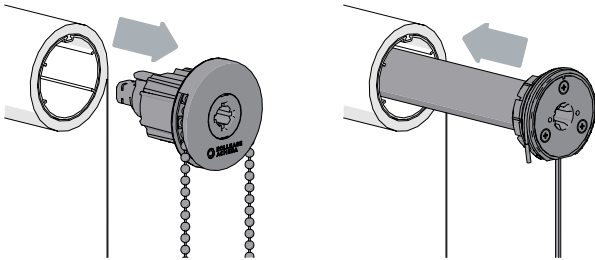


The motor head has a slot which retains the antenna.



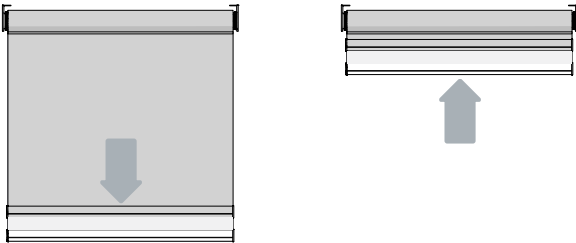
Hide the motor head with a colour matched Motor Cap.

RETRO-FIT SOLUTION



Replace a chain control with a ZERO Li-ion motor without having to change any existing hardware.

SOFT STOP



Shade gradually reduces speed when coming to a stop for ultra-smooth movement.

CHARGING OPTIONS



Power Supply

DC Power Panel

Battery Pack

SYSTEM UPGRADES

WIRE GUIDE

EASY-LINK

MOUNTING RAIL

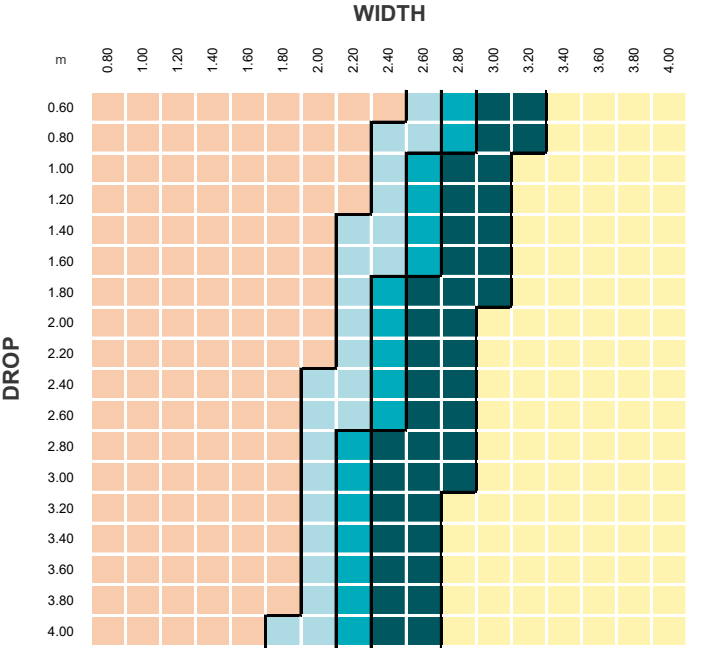
FRS VALANCE

P95 PELMET

CF90

MOTORS | DC SPECIFICATIONS

TUBE CAPACITY

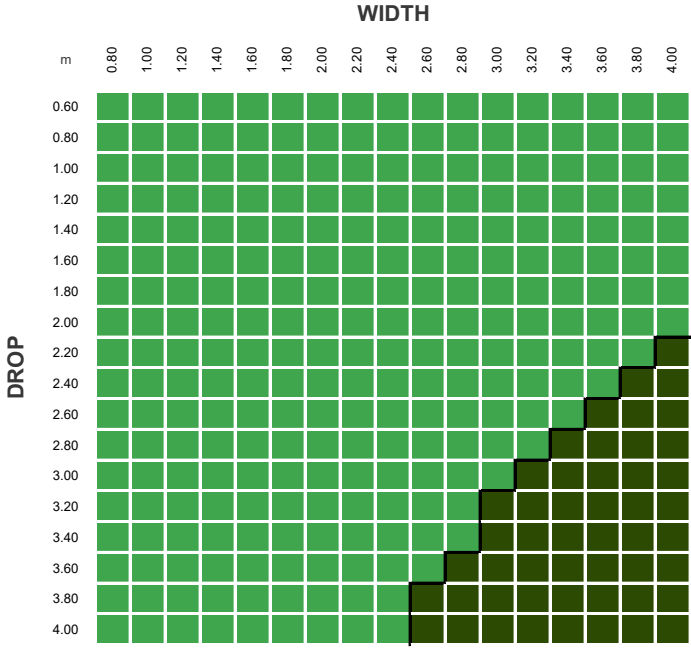


TUBES	
S40 STANDARD	
S45 LIGHT	
S45 STANDARD	
S45 HEAVY DUTY	
LINKED	

PARAMETERS:
FABRIC DENSITY: 390gsm
FABRIC THICKNESS: 0.6mm
WEIGHT BAR: D30 Bottom Rail
TUBE DEFLECTION: 1.05mm/m

NOTE: S40 IS ONLY COMPATIBLE WITH 0.7, 1.1Nm MOTORS

CONTROL CAPACITY



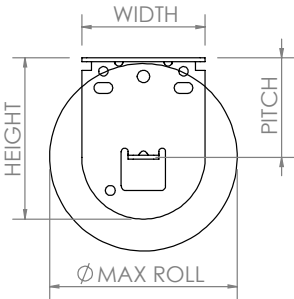
MOTOR	
1.1Nm	
2.0Nm 3.0Nm 6.0Nm	

PARAMETERS:
FABRIC DENSITY: 390gsm
FABRIC THICKNESS: 0.6mm
WEIGHT BAR: D30 Bottom Rail
TUBE DEFLECTION: 1.05mm/m

LIFTING CAPACITY	TUBE			
	S40 STD	S45 LT	S45 STD	S45 HD
ZERO 1.1 Nm	5.8kg	5.2kg	5.1kg	4.6kg
ZERO 2.0 Nm	-	9.4kg	9.2kg	8.3kg

TECHNICAL DATA

SINGLE BRACKETS	SPECIFICATIONS			MAX ROLL
	PITCH	WIDTH	HEIGHT	
AX	40mm	40mm	60mm	75mm
	55mm	40mm	75mm	105mm
VX/LX	40mm	50mm	65mm	75mm
LX	55mm	50mm	80mm	105mm

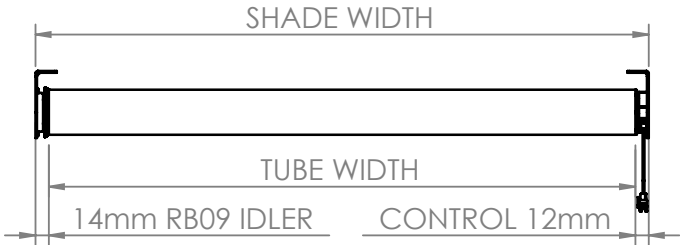


CONTROL OPTIONS	MINIMUM SHADE WIDTH (no covers)	TUBE DEDUCTIONS	
		NO BRACKET COVERS	WITH BRACKET COVERS
ZERO DC 1.1Nm	432mm	26mm	*28mm
ZERO DC 2.0Nm	576mm		

***Add +1mm to deductions for Motor Cover installations.**

TUBE WIDTH = SHADE WIDTH - [CONTROL + IDLER]

Minimum Shade Width based on 5mm gap between hardware in tube.

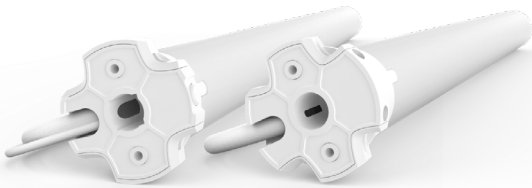


DOUBLE BRACKETS	MAX ROLL	SLIM PROFILE TOP-FRONT Fabric Roll Options	SLIM PROFILE TOP-BACK Fabric Roll Options	SQUARE-X Fabric Roll Options	SLIMLINE-X Fabric Roll Options
SLIM PROFILE/SQUARE-X	70mm				
SLIMLINE-X	65mm				

MOTORS | AC

FEATURES & BENEFITS

- Compatible with building automations system controllers.
- Control large shades with 6Nm of torque and 33rpm.
- Constant power.
- Manually set and adjust the limits of M6 motors.
- HD Adapter for double bracket installations.



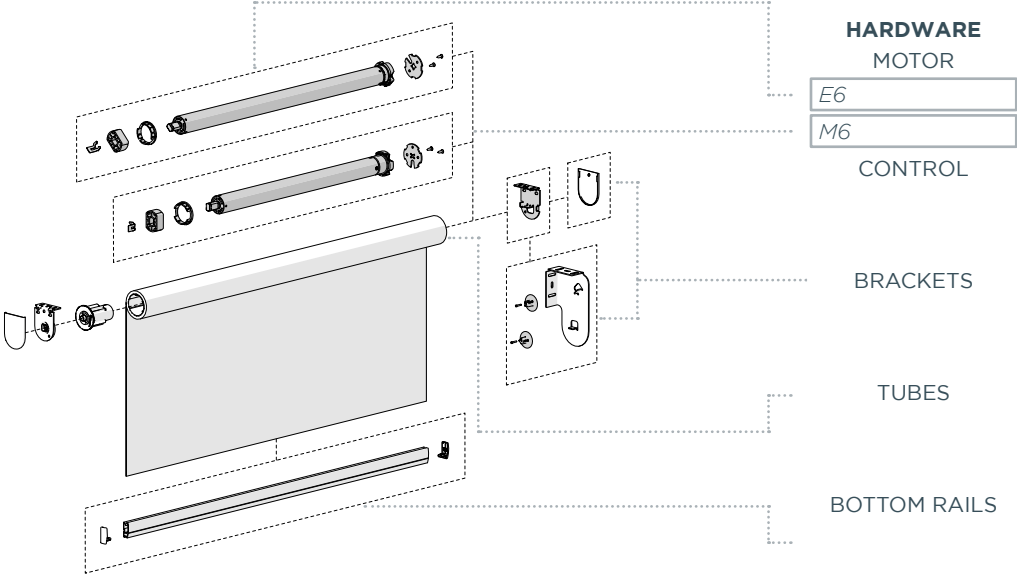
COLOUR RANGE

pure white

WEB PAGE LINK

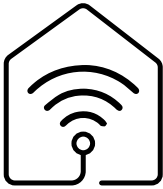
MOTOR HARDWARE

7 YEAR WARRANTY



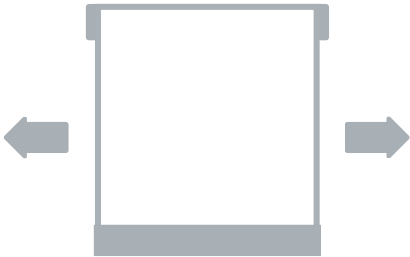
KEY SYSTEM FEATURES

BUILDING AUTOMATION SYSTEM CONTROLLERS



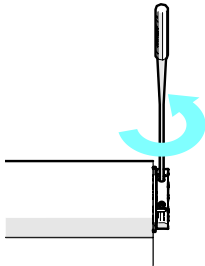
M6 AC Motor integration with smart building controllers.

ACHIEVE LARGER WINDOWS OR HEAVIER SHADES



6Nm TORQUE, 33rpm SPEED

MANUAL AUTOMATE M6 LIMIT SETTING



Manually set/adjust the limits of the M6 motor without electronic wireless controllers.

AUTOMATE E6 CONTROLLERS



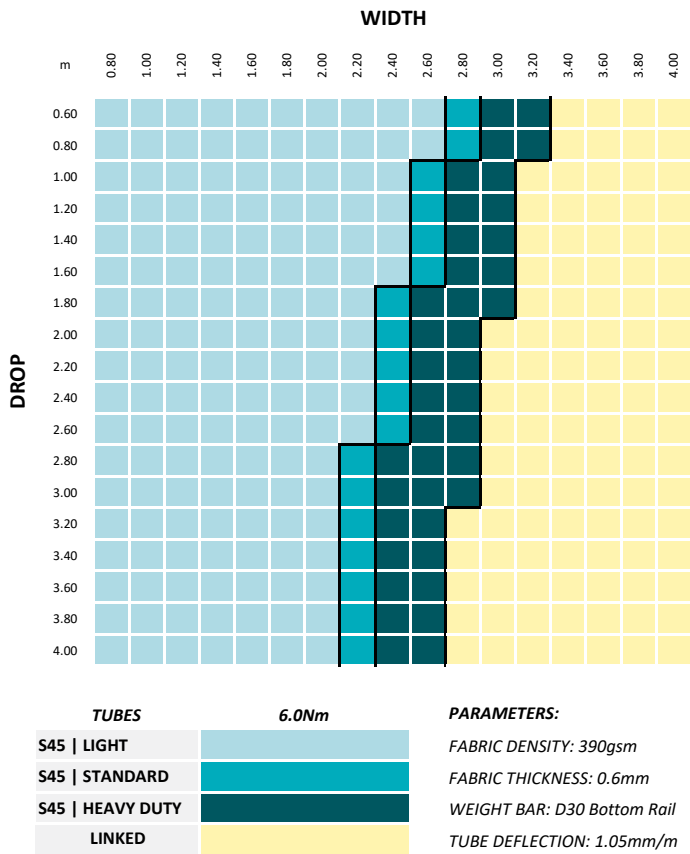
Compatible with Automate ARC range of controllers.

MEDIUM SYSTEM UPGRADES & OPTIONS:

S45 TO S60 WIRE GUIDE EASY-LINK MOUNTING RAIL FRS VALANCE P95 PELMET CF90

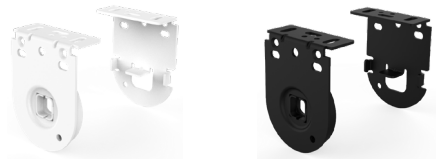
MOTORS | AC SPECIFICATIONS

TUBE CAPACITY



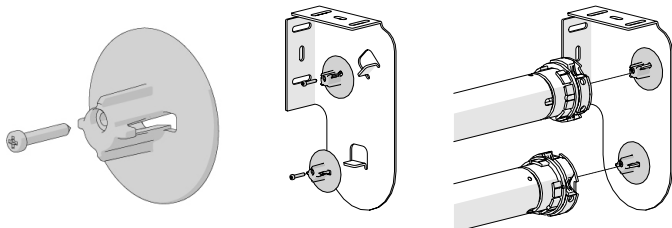
AC MOTOR DEDICATED SINGLE BRACKETS

Brackets designed to handle the increased motor capacity.



DOUBLE BRACKET COMPATIBILITY

The HD Adapter increases the strength of the bracket for optimal compatibility with the Rollease Acmeda 6.0Nm motors.



LIFTING CAPACITY	TUBE		
	S45 LT	S45 STD	S45 HD
6Nm	28.3kg	27.7kg	25.0kg

TECHNICAL DATA

SINGLE BRACKETS	SPECIFICATIONS			MAX ROLL
	PITCH	WIDTH	HEIGHT	
LX M40 RB08	40mm	50mm	65mm	75mm
	55mm	50mm	80mm	105mm
LX M40 RB09	40mm	50mm	65mm	75mm
	55mm	50mm	80mm	105mm

WIDTH

HEIGHT

PITCH

Ø MAX ROLL

CONTROL OPTIONS	MINIMUM SHADE WIDTH (no covers)	TUBE DEDUCTIONS	
		NO BRACKET COVERS	WITH BRACKET COVERS
E6	674mm	30mm	32mm
M6	567mm	30mm	32mm

TUBE WIDTH = SHADE WIDTH - [CONTROL + IDLER]

DOUBLE BRACKETS = ADD 2mm to all values in above table.

Minimum Shade Width based on 5mm gap between hardware in tube.

SHADE WIDTH

TUBE WIDTH

14mm RB09 IDLER

CONTROL 16mm

DOUBLE BRACKETS	MAX ROLL	SLIM PROFILE TOP-FRONT Fabric Roll Options	SLIM PROFILE TOP-BACK Fabric Roll Options	SQUARE-X Fabric Roll Options	SLIMLINE-X Fabric Roll Options
SLIM PROFILE/SQUARE-X	70mm				
SLIMLINE-X	65mm				