

OVERVIEW: AUTOMATE S45 | MOTORISED ROLLER SHADES

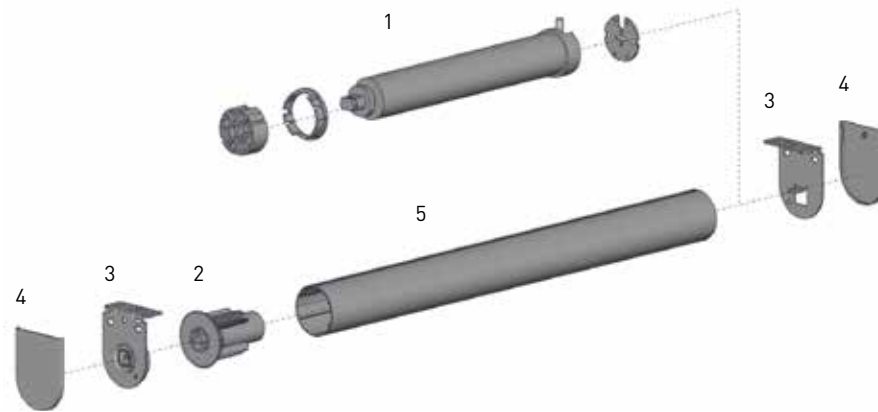
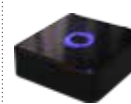
The AUTOMATE S45 range offers two high performance motorised solutions for our medium roller blind hardware systems. Choose between the E6 with seamless electronic limit setting capability and quite operating technology, or the ML for home automated control systems. All motors feature in-built receivers with a frequency range up to 200m, controlled by our contemporary remotes or via your smart phone. Our motors are supported by our 5 year motor warranty for peace of mind.

AUTOMATE E6

- Leveling control
- Simple limit setting and adjustment
- Favourite position
- ARC protocol, 2-way RF communication and simplified programming
- "Slim Head" design minimizes light gap
- Low Noise Operation

AUTOMATE M6

- Compatible with building automation system controllers.
- 6Nm torque, 28rpm speed.

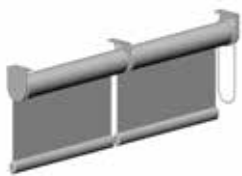
**CONTROL OPTIONS**MTRF-PULSE-AU
WIFI-BRIGEMTRF-REM-1C
SINGLE CH.MTRF-REM-15
FIFTEEN CH.**SYSTEM INDEX**

1	Automate S45 Motor Kit
a)	MTACRF35-6-240V (E6)
b)	RB24-4502-069003 (M6)
2	Easy-Lock Auto Idler - S45 RB08-0501-xxx043
3	M40 H/D LX Installation Brackets RB40-8355-xxx040 - 40mm projection RB40-8355-xxx055 - 55mm projection
4	LX Bracket Cover Caps RB08-4151-xxx040 - 40mm projection RB08-4151-xxx055 - 55mm projection
5	Aluminium Tube - S45 (LIGHT / STANDARD / HD) RB93-044#-000580

xxx= colour ## = size /type

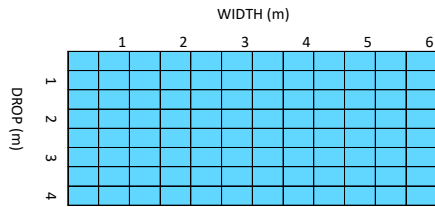
SYSTEM OPTIONS**MOUNTING RAIL****COLOUR RANGE**

pure white 069	sandstone 269	barley 283	silver grey 338	black 050

ADD ON SYSTEMS**EASY-LINK S45****CF 90****PELMET 95 / VALANCE FRS 100****INTERNAL WIRE GUIDE**

SPECIFICATIONS: AUTOMATE S45 | MOTORISED ROLLER SHADES

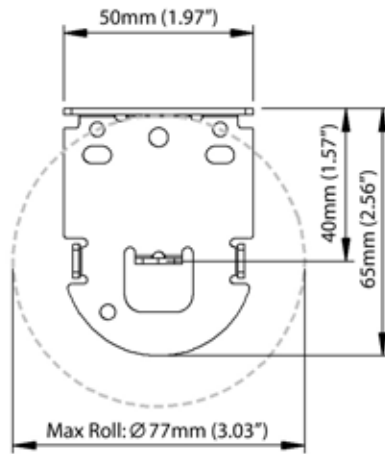
MOTOR CAPACITY CHART



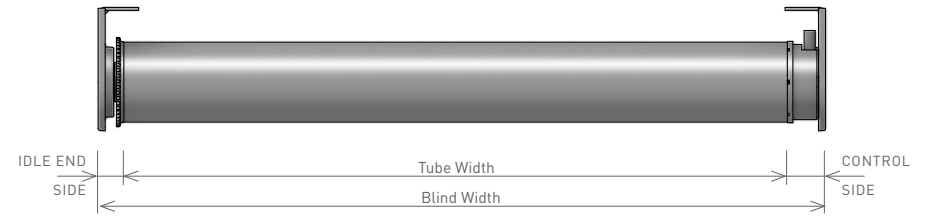
MAXIMUM HOLD WEIGHT RANGE

*Based on fabric weight of 420 grams per square meter, and oval base bar.

MAX ROLL



DEDUCTIONS



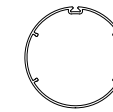
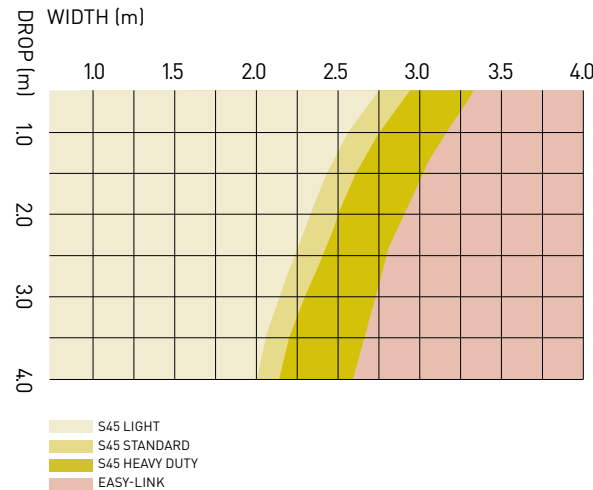
MOTOR		IDLE END SIDE	CONTROL SIDE	OVERALL DEDUCTION
AUTOMATE S45 E6 / M6	LX BRACKETS - with covers	14mm [0.55"]	18mm [0.71"]	32mm [1.26"]
	LX BRACKETS - withOUT covers	13mm [0.51"]	17mm [0.67"]	30mm [1.18"]

MOTOR OPTIONS & SPECS

	Automate E6	Automate M6
Code:	MTACRF35-6-240V	RB24-4502-069003
Power supply	220 -240V	230V
Capacity	6Nm 28 rpm	6Nm 28 rpm
Running time	4 Min	4 mins
Weight Capacity:	17Kg	17Kg
Current	0.67A	0.53A
Consumption	155W	121W
Protection class	IP44	IP44
Frequency	433.92 MHz	50Hz
Dimensions	613mm [24.13"] length	481mm [18.94"] length
Min blind size	740mm [29.13"]	580mm [22.83"]
Sound Level	46dB - 53dB	55dB
Weight	1.430Kg	1.430Kg
RF Modulation	FSK	-
Limit Switch Type	Electronic	Mechanical
Temp Working Range	0°C to 60°C [32°F to 140°F]	0°C to 60°C [32°F to 140°F]
Insulation Class	I.C.L.A	I

ALUMINIUM TUBES

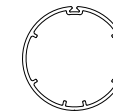
TUBE CAPACITY CHART



S45 LIGHT

T-Spline Tube

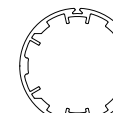
CODE: RB93-0443-000580
RB93-6443-000580 (with D/S tape)
O.D: 43mm
Length: 5.8metres



S45 STANDARD

T-Spline Tube

CODE: RB93-0444-000580
RB93-6444-000580 (with D/S tape)
O.D: 44mm
Length: 5.8metres



S45 HEAVY DUTY

T-Spline Tube

CODE: RB93-0449-000580
RB93-6449-000580 (with D/S tape)
O.D: 49mm
Length: 5.8metres