



USAGE & MAINTENANCE MANUAL



CONTENTS ..>

THANKYOU!	3
Introduction	4
Safety	5
Technical data - Structure	7
Technical data - Motors	8
Technical data - Fabrics	9
Awning maintenance	11
Transport and installation	12
Dismantling and disposal	13
Troubleshooting	14
Warranty	16
CE Marking TÜV UNI EN	18
Awning delivery document	19
Awning installation document	20



This “use and maintenance manual” was produced by Rollease Acmeda in order to give instructions for the correct use and maintenance of the product. This manual must be kept intact in all its parts and in an easily accessible place. It is prohibited to remove, rewrite or in any way modify the pages of the manual and their content.

If this manual is lost, the client must ask Rollease Acmeda for a new copy.

Rollease Acmeda reserves the right to update the products and corresponding manuals, without obligation to notify any person of such revisions.

Rollease Acmeda reserves all rights to this manual: neither partial nor full reproduction is allowed without written authorisation.

THANK YOU

Dear Customer,

Thank you for having purchased a Rollease Acmeda product. Every single component of the awning purchased is the result of a long production process starting from the engineering of the design to testing the functionality of your awning, passing through operations that use and transform raw materials such as aluminum, steel and plastic resins.

The attention to detail combined with the strength of the components make Rollease Acmeda awnings the state of art in the sun shading industry. All our products have been tested by the prestigious German organization TÜV Rheinland to ensure the quality and safety of the awning you have purchased.

Please ensure you thoroughly read all the instructions contained in this manual. You will find information and operations required to ensure a long and trouble-free life for your awning.



INTRODUCTION

AWNING OPERATION INSTRUCTIONS

All the awnings of Rollease Acmeda are designed and manufactured exclusively for sun protection of residential and commercial buildings, and various community services. The awning must be exclusively destined for the use indicated above, even if it is packaged with waterproof fabric or PVC material. Any other use is considered improper and erroneous, and potentially dangerous, and releases Rollease Acmeda from any liability for any damage to property or persons, as well as voiding your warranty.

The awning must be closed in case of rain, snow, and more generally in case of extreme weather conditions. It is extremely dangerous to use the awning in such conditions and can cause damage to property and persons. In order to reduce the possibility of mold formation, it is recommended to rewind the fabric (close the awning) only when it is completely dry.

SYMBOLS USED IN THE MANUAL

The WARNING symbols used in this manual are shown below:



IMPORTANT

Instructions and useful advice to be observed to ensure proper use of the awning. Failure to follow these messages may compromise the integrity and/or resistance of the product.



WARNING

DANGER FOR THE OPERATOR! Instructions and indications to be assessed and followed carefully. Failure to follow these indications may compromise individual safety.



SAFETY

GENERAL SAFETY INFORMATION



IMPORTANT

This manual is an integral part of the product: always keep it intact and near to the awning. Before using the awning, carefully read all the instructions contained in this manual.



IMPORTANT

Installation, start-up, adjustment and extraordinary maintenance operations must only be performed by specialized technical staff who are qualified to carry out the above tasks; therefore, contact the Technical Assistance Service.



WARNING

If the awning is motorised, disconnect the main power supply before carrying out maintenance and cleaning operations.



WARNING

The end user must immediately contact the dealer if he should find faults and/or malfunctions of the safety devices or if any dangerous situations occur.



IMPORTANT

Any tampering or modification to the product without the authorisation of the Manufacturer will exempt the latter from any responsibility for any damage that may derive thereof.



IMPORTANT

Study the manual for any doubts concerning the use of the awning before using it.



WARNING

It is forbidden to use the awning to support yourself: risk of serious personal injury and of damage to the awning itself.



IMPORTANT

Do not place any objects on the awning as they can damage the fabric.



IMPORTANT

As some parts of the awning are in painted plastic (e.g.: the casings), do not use aggressive products (such as solvents, ammonia, petrol) to clean the product as these may remove the colour of the paint.



WARNING

Make sure that while opening/closing the awning, there are no people, animals and objects nearby.

SAFETY

GENERAL SAFETY INFORMATION



WARNING

If the awning is motorised, it is opened and closed by pressing a switch and/or by using a radio control: both must be kept out of the reach of children.



WARNING

It is absolutely forbidden to remove the safety devices installed on the awning.



WARNING

In case of rain, wind or snow, close the awning completely as atmospheric agents may damage it.



WARNING

In the presence of ice, close the awning to prevent the fabric from deteriorating.



WARNING

It is forbidden to install or place ladders or other objects near to the awning as they may reduce the space needed for the awning.



WARNING

If the awning is installed in sensitive buildings (schools, colleges, hospitals, etc...), a key switch must be used.



IMPORTANT

Rollease Acmeda guarantees only the products it supplies. If any parts have to be replaced with other components not guaranteed by Rollease Acmeda, the product warranty will automatically become void and Rollease Acmeda shall not answer for any malfunctions of the product.



WARNING

If a ladder is required during cleaning, make sure that it is regulatory and firmly placed on the ground in order to prevent it from tipping and causing serious injury to persons.



WARNING

If the awning is installed on a floor higher than the ground floor, the person cleaning the awning must pay greater attention to the risk of falling.

SAFETY DEVICES (ONLY FOR ELECTRIC AWNINGS)

The awning can be fitted with some user safety devices:

- **WIND SENSOR:** the awning closes automatically in case of strong winds.
- **RAIN SENSOR:** the awning closes automatically in case of heavy rain.
- **MANUAL EMERGENCY OVERRIDE:** in case of power cut, the awning can be closed by using the emergency winch.

TECHNICAL DATA

STRUCTURE

According to the awning model, the components are made with the following materials:

- Extruded aluminum profiles: alloy AL EN AW 6005, alloy AL EN AW 6060
- Square bar: steel S185 - DIN 2395 galvanized KX51 + Z275 UNI 10142
- Blind roller d78 10/10: Galvanized steel FeP02G DX51 + Z200 UNI 10142
- Castings, extrusions and components in aluminum: alloy EN AC-44100, alloy EN AC - 47100 and alloy EN AW 6082
- Plastic parts: ABS with UV protection, Nylon, glass-filled Nylon, polycarbonate
- Screws: Stainless steel AISI 303 and 304 and 316, high-strength alloy steel 10.9 with Dacromet treatment.

The profiles and aluminum components are coated with UV-resistant, poly- ester resin based epoxy powders, following the quality standards laid down by QUALICOAT.

Before coating all components and profiles are treated with washing and pre-treatments for increasing the adhesion strength of coatings.

Rollease Acmeda does not guarantee the perfect match between the colours of the different components even if painted with the same colour as coating on different surfaces and different materials may generate slight differences in colour tone.

Despite all the advanced processes of coating, for installations in coastal areas and in general by intense exposure to saline mist can form fouling and bubbles in the mergers and profiles. These phenomena are unavoidable and cannot be covered by the warranty.

TECHNICAL DATA

MOTORS

AWNING OPERATION TYPES

Manually operated awning

The opening and closing of the awning is carried out with a crank rod and a geared winch.

Motorised awning

Opening and closing of the awning can be carried out by:

- a SWITCH, installed close to the awning and in a position that allows the user total visibility of the awning's movements. If placed outside, the switch must be suitably protected;
- remotely by a RADIO CONTROL, which is portable or wall mounted.

The characteristics and function of these systems are described in the manuals, supplied attached, referring to the Motor, the Automatic Devices and the requested Controls.



WARNING



Incorrect installation can cause damage to property and persons. During installation, it is compulsory to disconnect the power supply, in accordance with the regulations in force. Installation can be carried out only by specialized, qualified and licensed technicians.

TECHNICAL DATA

FABRICS

NATURAL CHARACTERISTICS OF THE FABRICS

Over the past 10 years, the surface treatments of the fabrics for awnings have undergone major changes, caused mainly by the growing environmental awareness of modern society. The elimination of the use of formaldehyde or arsenic and mercury have reduced the performance of the fabrics as regards the characteristics of anti-crease, anti-stain and mold resistance. The fabrics of Rollease Acmeda are packaged only with the best brands in the European market. However, it cannot exclude the possibility of presenting the following phenomena:

MOLD

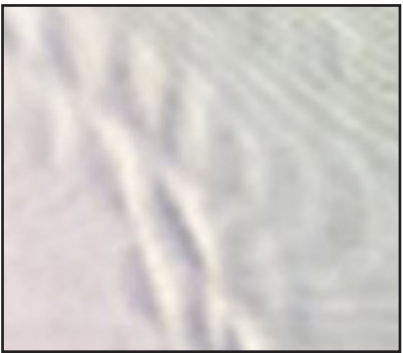
The fabrics of all manufacturers are treated with anti-mold products but can be attacked by microorganisms that make it difficult or impossible to clean, especially in the following situations: acid rain, high concentrations of harmful pollutants in the atmosphere, installations near roads, air conveyors, tall trees that release resin. To prevent or reduce the extent of these phenomena we recommend a constant cleaning. In addition, if a fabric is wrapped up when it is still wet the possibility of forming molds increases significantly: It is therefore advisable close the awning when the fabric is completely dry.

FOLDS EFFECT “SPIDER”

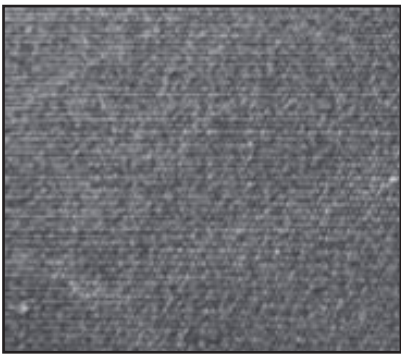
This phenomenon occurs mainly in light fabric colours, and is formed when the fabric is to be bent for reasons of processing. It occurs as a result of scratches visible against the dark and are not avoidable. They cannot therefore be contested, also because they do not affect the correct functioning of the product. Similar to this is the “writing effect”, the presence of lines of clearer bending that form during the manipulation of the fabric in process, most evident in dark colours. This is caused by the treatment of superficial finishing of the fabric that assures the water repellency (photo 1-2).



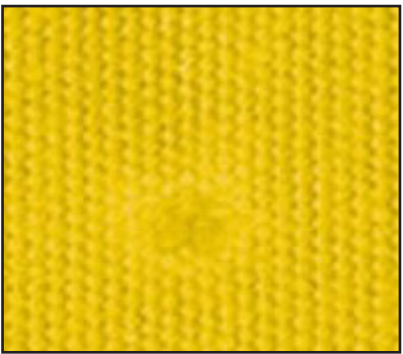
Folds of compression and winding



Undulations in the middle of the fabric or honeycomb



Writing effect



Micropores



Undulations near the seams



Undulations at the edges of the fabric

TECHNICAL DATA

FABRICS

WEAVE EFFECTS

Phenomenon also called “honeycomb” or “embossing” manifests itself especially near the seams and side edges because of the double thickness of the fabric which, due to the overlap of the fabric after the rolling, creates tensions that could give rise to so-called “embossing” (photos 3-4).

FRAYING AND ABRASION

The fabric, when exposed to continuous stress of wind, may have wear and tear, fraying and abrasions. The phenomenon is more evident in the valances.

MICROHOLES

The use of special protective resins that provide greater rigidity and stability to the fabric can cause the formation of microholes near the folds of the fabric of canopies (photo 5).

LATERAL EDGES

Especially in the cassette awnings, it can present the phenomenon called side “flickering” of the fabric, mainly caused by the double thickness of the fabric near to the seams and by different strains that arise during the closing of the awning. This phenomenon cannot be eliminated and cannot affect the correct functioning of the awning (photo 6).

German trade associations have issued a specific study on the above-mentioned subjects, like weave effects, crease marks, microholes. This research reports a wide range of technical characteristics, which because they are so, can not be considered as faults. Such technical characteristics do not alter at all the quality of the fabrics. Consequently, in case of customer’s complaint, there is no ground for a dispute on the product. However, this does not affect the correct functioning of the awning, and above all does not decrease the value of the fabric.

AWNING MAINTENANCE



WARNING

All maintenance and cleaning operations must be carried out with the power supply detached.



WARNING

All maintenance operations must be carried out safely and only by qualified and authorised personnel.

ORDINARY MAINTENANCE



WARNING

As some parts of the awning are in painted plastic (e.g.: the casings), do not use aggressive products (such as solvents, ammonia, petrol) to clean the product as these may remove the colour of the paint. Cleaning carefully the fabric of the awning is essential to safeguard the formation of mold caused by deposits of dust or other material on the fabric itself; the cleaning is carried out with dust extraction or passing a sponge or cloth moistened with warm water.

Dry the fabric after cleaning.

The awning is provided with water drain on the terminal bar through a groove that collects water which, sliding to right and left, is then ejected through the end caps on the sides of the terminal bar itself. It is advisable periodically clean the groove and the caps as residue from rain, wind and so on could jeopardize the correct operation of the drain system.



WARNING

If during maintenance operation a ladder is required, make sure that it is regulatory and firmly placed on the ground in order to prevent it from tipping and causing serious injury to persons.



WARNING

If the awning is installed on a floor higher than the ground floor, the person cleaning the awning must pay greater attention to the risk of falling.

EXTRAORDINARY MAINTENANCE

The extraordinary maintenance must be carried out by a qualified dealer of Rollease Acmeda and is compulsory every two years. If it is not carried out, the warranty will no longer be valid. In any case only original spare parts of Rollease Acmeda must be used. Tampering or use of non-original components lead to the immediate loss of Rollease Acmeda warranty.



WARNING

Failure to use original components can cause damage to property and persons. All maintenance operations must be carried out with the power supply detached, according to the regulations in force.

TRANSPORT & INSTALLATION

AWNING TRANSPORT

Moving and transport operations are the dealer's and/or the manufacturer's responsibility, who undertakes to transport the product using suitable packaging for preserving the product's integrity until it is delivered to the customer.



IMPORTANT

Damage to the product, after installation, caused by dismantling of the awning and later movements and/or transport carried out is not covered by the warranty.



IMPORTANT

The packaging material MUST be disposed of and/or reused in accordance with the applicable local regulations and standards in force.

AWNING INSTALLATION



WARNING

The operations of installation, adjustment and maintenance of the awning must be carried out by technically specialized and qualified personnel.



DISMANTLING AND DISPOSAL

DISMANTLING



WARNING

The dismantling of the awning must be made by qualified personnel.

DISPOSAL

The components of the awning are not considered hazardous materials; no special indications are given for disposal or scrapping. Follow the regulations in force at the time when the awning is about to be disposed of.



TROUBLESHOOTING

IMPORTANT

In the event of breakdowns or search for faults, please observe the safety instructions; in particular, during searches or repair of any electrical parts, there is a danger of fatal electrical discharges.

MAINTENANCE ON ELECTRICAL PARTS MUST BE CARRIED OUT ONLY BY AUTHORISED PERSONNEL.

In the event of any problems not listed in the tables, contact Technical Assistance.

MANUALLY OPERATED AWNING

PROBLEMS	CAUSES	SOLUTIONS
Conical winding of the fabric	<ul style="list-style-type: none">Incorrect arm alignmentNon uniform fabric thickness	<ul style="list-style-type: none">Rewind the fabric completely and call assistanceRewind the fabric completely and call assistance

MOTORISED AWNING – WITHOUT ELECTRICAL CONTROL UNIT

PROBLEMS	CAUSES	SOLUTIONS
Conical winding of the fabric	<ul style="list-style-type: none">Incorrect arm alignmentNon uniform fabric thickness	<ul style="list-style-type: none">Rewind the fabric completely and call assistanceRewind the fabric completely and call assistance
<ul style="list-style-type: none">The awning does not rewind completelyThe awning does not open completely	<ul style="list-style-type: none">Incorrect end-limit switch regulationMotor crown moving while in motion	<ul style="list-style-type: none">Contact AssistanceContact Assistance
The motor is very noisy	<ul style="list-style-type: none">Cabling errorMotor breakdown	<ul style="list-style-type: none">Contact AssistanceContact Assistance
The motor blocks after 4-5 minutes of continuous running	<ul style="list-style-type: none">Intervention of motor's thermal protection	<ul style="list-style-type: none">Leave the motor to cool down for a few minutes

MOTORISED AWNING – WITH ELECTRONIC CONTROL UNIT

PROBLEMS	CAUSES	SOLUTIONS
The awning does not move	<ul style="list-style-type: none"> Broken fuse Motor breakdown Cabling error 	<ul style="list-style-type: none"> Contact Assistance Contact Assistance Contact Assistance
The awning moves in an irregular manner	<ul style="list-style-type: none"> Wind sensor broken 	<ul style="list-style-type: none"> Contact Assistance
The awning does not wind out due to the strong wind and heavy rain	<ul style="list-style-type: none"> Cabling error Broken wind / rain sensor 	<ul style="list-style-type: none"> Contact Assistance Contact Assistance
The awning opens and closes alone with the radio control	<ul style="list-style-type: none"> Cabling error System failure 	<ul style="list-style-type: none"> Contact Assistance Contact Assistance



Rollease Acmeda has always paid attention to the quality: this is why all the awnings of Rollease Acmeda are tested by the prestigious German organization TÜV Rhein-land in order to obtain the CE marking.

We have opted to focus on design, production and sales and let a third party certification body judge if our products are of top quality. In our laboratory, technicians of TÜV can make all the stress and load tests to simulate the wind force. The reference standard is UNI EN 13561, which divides the awnings according to the wind resistance class. The Rollease Acmeda awnings have obtained mostly results in class 2 and 3, which is the maximum certifiable. In addition to the tests that certify the wind resistance class, Rollease Acmeda is committed daily to test its products in order to ensure a continuous control of the production. That’s why we have coined the brand OBSESSED by TESTING.

For this reason we offer 5 years of warranty, without any gradual decrease.



AWNING DELIVERY DOCUMENT

TO BE COMPLETED BY THE INSTALLER
To be passed on to the installer as a proof of the awning delivery

The client

First name_____ Last name_____

Address_____ Postal code_____

Town_____ Country_____

declares to have purchased from the Rollease Acmeda dealer:

Company name_____

Address_____ Postal code_____

Town_____ Country_____

the awning:_____

Model_____ Colour_____

Width_____ Projection_____ Height_____

Manual ☐ Motorised ☐ Motor brand_____

Fabric_____

and declares to have received the following documents along the awning:

- ☐ Use and Maintenance
- ☐ Manual Motor manual
- ☐ Automation manual (control centers, remote controls...)

Place_____ Date_____

Customer signature

PRIVACY POLICY: Pursuant to Article 13 of Legislative Decree 196/2003, the personal data will be processed by Rollease Acmeda for the performance of the contract and will not be disclosed to third parties. The data may also be used to inform on the activities of Rollease Acmeda srl. In relation to the data provided, you may exercise the rights under the Art. 7 of Legislative Decree no. 196/2003: confirmation of the data, origin, purpose, update, delete, right to object. To exercise these rights you should contact the Head of the processing of personal data, at Rollease Acmeda Pty Ltd

AWNING INSTALLATION DOCUMENT

TO BE COMPLETED BY THE INSTALLER
To be passed on to the end customer as a proof of the awning installation

The undersigned dealer of Rollease Acmeda:

Company Name_____

Address_____ Postal code_____

Town_____ Country_____

declares to have installed the following awning of Rollease Acmeda:

Model_____ Colour_____

Width_____ Projection_____ Height_____

Manual ☐ Motorised ☐ Motor brand_____

Fabric_____

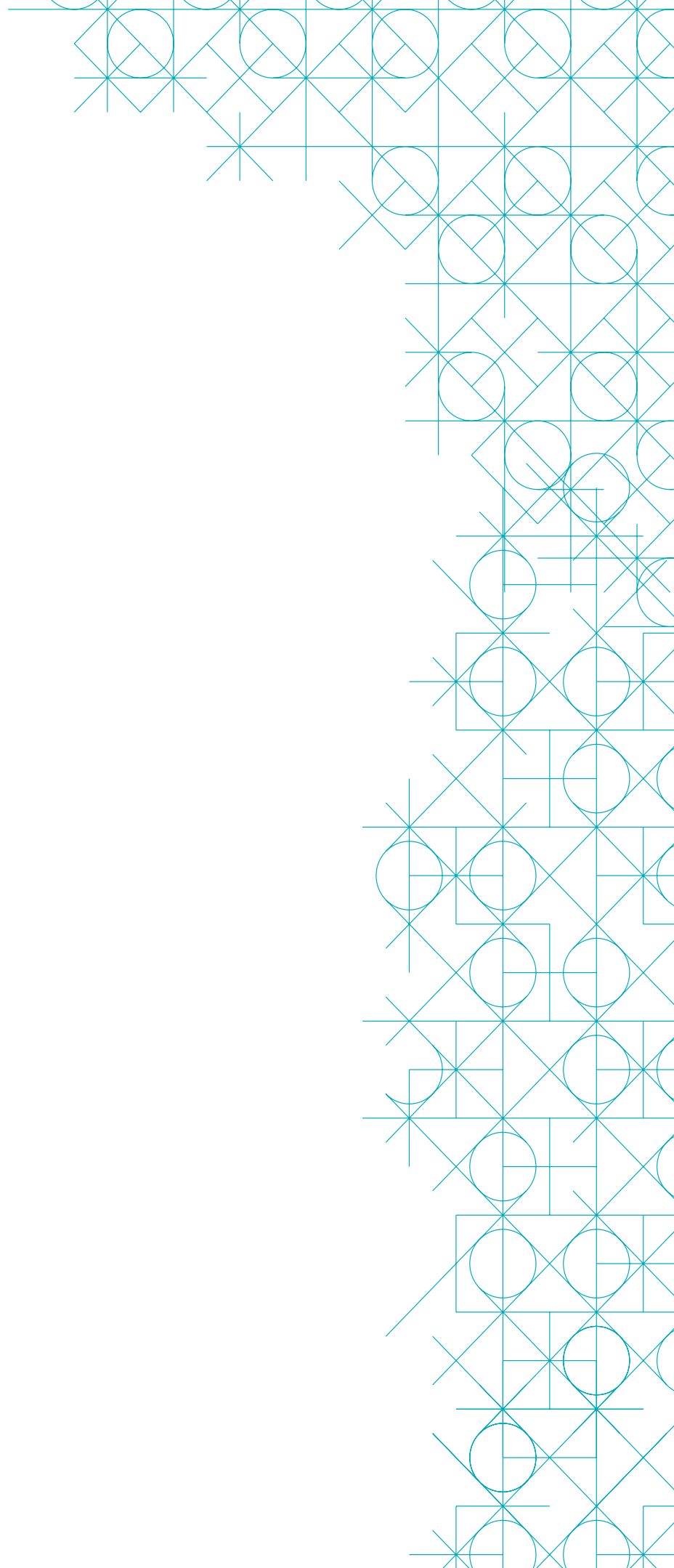
and declares to have delivered the following documentation to the final costumer:

- ☐ Use and Maintenance
- ☐ Manual Motor manual
- ☐ Automation manual (control centers, remote controls...)

Place_____ Date_____

Installer’s Stamp & Signature:

PRIVACY POLICY: Pursuant to Article 13 of Legislative Decree 196/2003, the personal data will be processed by Rollease Acmeda for the performance of the contract and will not be disclosed to third parties. The data may also be used to inform on the activities of Rollease Acmeda srl. In relation to the data provided, you may exercise the rights under the Art. 7 of Legislative Decree no. 196/2003: confirmation of the data, origin, purpose, update, delete, right to object. To exercise these rights you should contact the Head of the processing of personal data, at Rollease Acmeda Pty Ltd





Rollease Acmeda Pty Ltd
rolleaseacmeda.com
info@rolleaseacmeda.com
T: +61 3 9355 0100
F: +61 3 9355 0110



**ROLLEASE
ACMEDA**
PRECISION IN MOTION

