

AUTOMATE VERSA MOTORISED CURTAIN SYSTEM

Our Automate Versa motor and curtain track hardware offers a complete motorised curtain solution. This versatile motor easily connects to two different power sources – a rechargeable lithium-ion battery or an AC power module, providing greater flexibility at installation. Inverted mounting also offers a continuous powered solution hidden within ceiling pockets for a premium aesthetic.

AESTHETICAL FEATURES

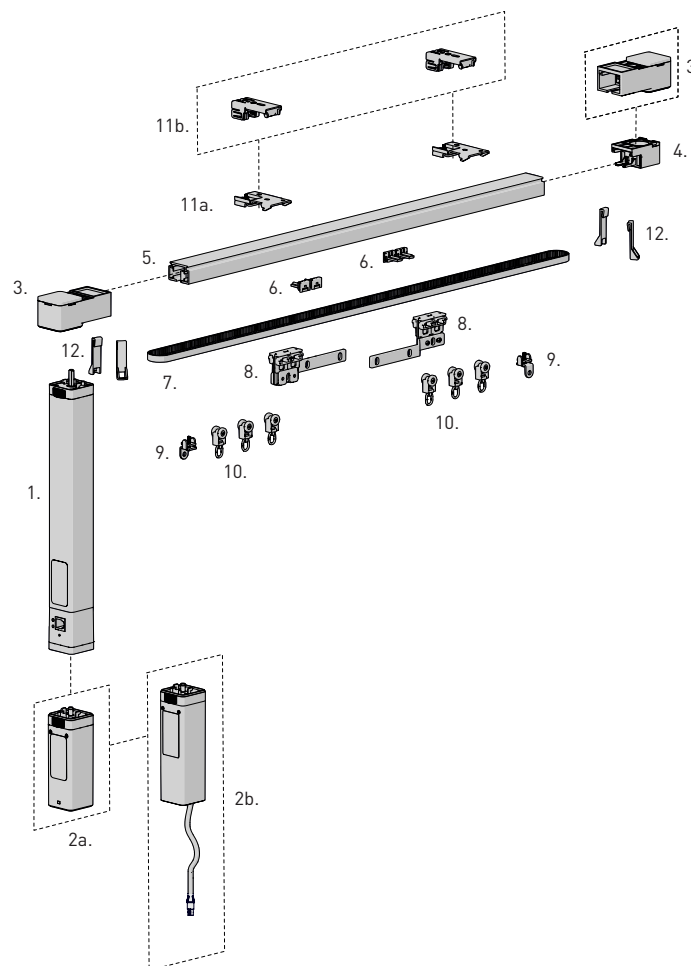
- Neat profile curtain track.
- The Track Joiner connects multiple tracks seamlessly.
- S-Fold and Wave curtain components.

FUNCTIONAL BENEFITS

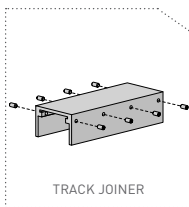
- Inverted mounting option of motor for ceiling pocket installs.
- Powered by either a rechargeable battery or AC module.
- Centre and one way draw configurations.
- Soft open and close operation.
- Self-adjusting speed.
- Manual override function to open/close with one light touch.
- 50kg max operating capacity.

INSTALLATION/ ASSEMBLY FEATURES

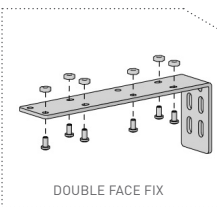
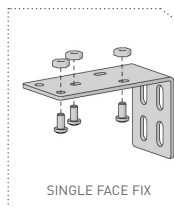
- Easy automatic limit setting.
- Single action install bracket for fast installation.
- Double bracket option for dual application.



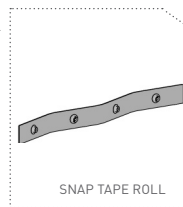
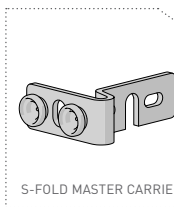
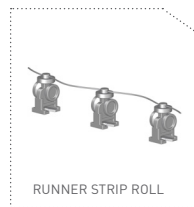
OPTION



BRACKET OPTIONS



S-FOLD OPTION



COLOUR RANGE



SYSTEM INDEX

1. AUTOMATE | Versa Drapery Motor
MT01-2101-xxx002
- 2a. AUTOMATE | Drapery Battery Module
MT03-0305-xxx004
- 2b. AUTOMATE | Versa Module 2.5M Cord [240V]
MT03-0305-xxx012
3. Versa Motor End "S" Track Pulley
MT03-0401-xxx004
4. AUTOMATE | Return Pulley "S" Track
MT03-0401-xxx013
5. Curtain Track
CU21-0101-xxx550
6. Belt Fastening Button
CU21-0301-158001
7. Rubber Belt
CU21-0301-158000
8. Master Carrier
CU21-0401-010020
9. Stopper
CU21-0401-010010
10. Runners
CU21-0401-xxx001
11. Ceiling Bracket
 - a. CU21-0501-xxx001
 - b. MT03-0401-xxx012
12. End Hook
CU21-0201-xxx003

CONTROL OPTIONS

REMOTES



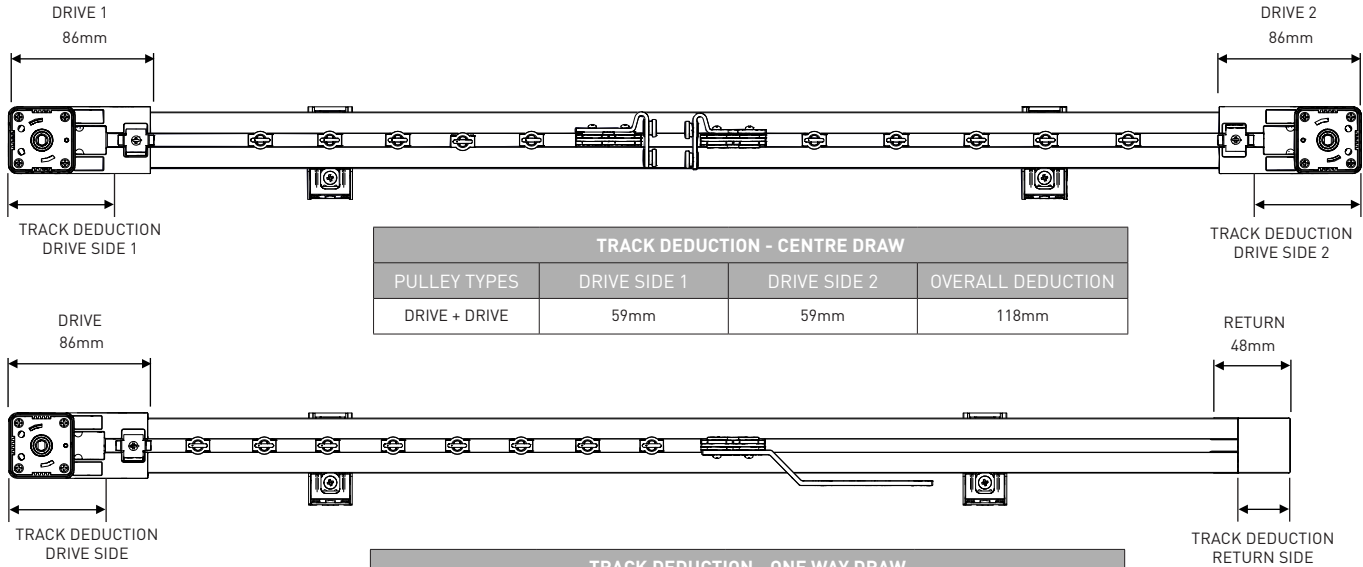
PULSE HUB & APP



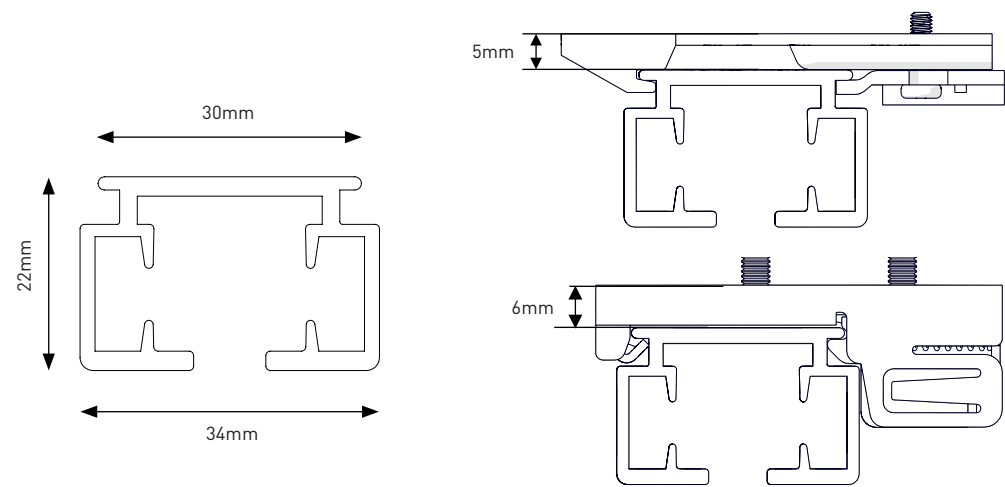
SPECIFICATIONS

DRAPE MOTOR SPECIFICATIONS	
Region	AU/EU/UK
Power Cable Length	2500mm
Voltage Input	100 – 240V 50Hz
Capacity	1.2 Nm @ 120 RPM / 14 cm/s
Running Time	12 min
Max Current	1.3 A
Consumption	20 W
Protection class	IP40
Frequency	433.92 MHz
Sound Level	44 dB
Weight	0.83 Kg (Motor Only)
RF Modulation	FSK
Limit Switch Type	Electronic
Temp Working Range	0 °C to 60 °C
Insulation Class	II

DEDUCTION



TRACK PROFILE & DIMENSIONS



STRAIGHT TRACK

