

## OVERVIEW: RB08 MKII CHAIN CONTROL S40/ S45 SYSTEM

The progression to the RB08 MKII Chain Control System is due to the implementation of several advancements made in Acmeda's development program, improving the overall performance, function and appearance of the previous design/model.

## AESTHETIC FEATURES

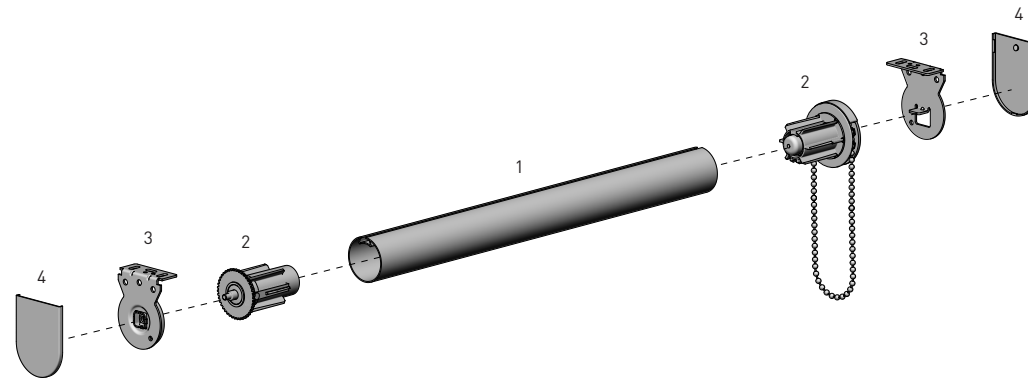
- Smooth / clean aesthetical appearance.
- New ergonomic bracket design with square edge profile.

## ASSEMBLY / INSTALLATION BENEFITS

- Easy-Lock effortless installation.
- 7mm adjustable Idler Extension.
- Improved installation with self locating grooves.

## FUNCTIONAL BENEFITS

- Improved chain retention system, securing chain within mechanism during operation.

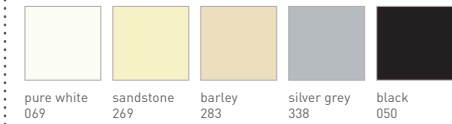


## SYSTEM INDEX

|   |  |
|---|--|
| 1 | Aluminium Tube - S40/S45<br>RB91-02##-000##0   |
| 2 | Easy-Lock MKII Chain Winder & Extended Idler<br>RB08-4002-xxx000 - S40<br>RB08-4502-xxx000 - S45                     |
| 3 | Easy-Lock Installation Bracket<br>RB08-8351-xxx0## - VX [40 & 55mm proj.]<br>RB08-8314-xxx0## - AX [40 & 55mm proj.] |
| 4 | Bracket Cover Cap<br>RB08-4151-xxx0## - VX [40 & 55mm proj.]<br>RB08-4141-xxx0## - AX [40 & 55mm proj.]              |

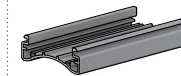
xxx= colour    ## = size

## COLOUR RANGE

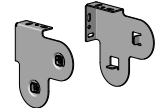


## SYSTEM OPTIONS

## MOUNTING RAIL



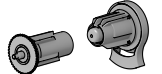
## COMBO BRACKETS



## RETRO-FIT BOOSTER

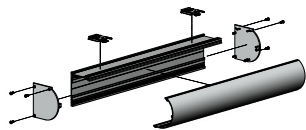


## FIXED GUIDE WINDER SETS

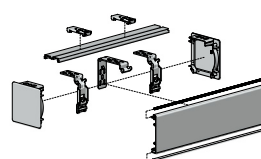


## ADD ON SYSTEMS

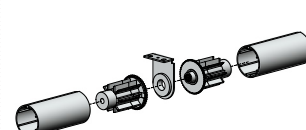
## ROUND BOX 90



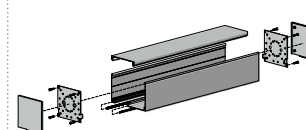
## FRS100 VALANCE



## EASY-LINK S40 / S45



## SQUARE BOX 100

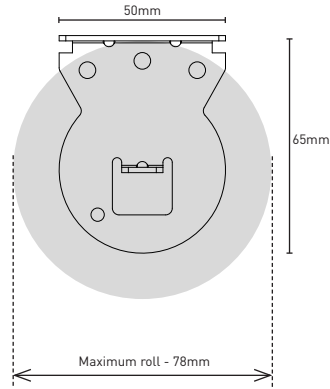


## INTERNAL WIRE GUIDE

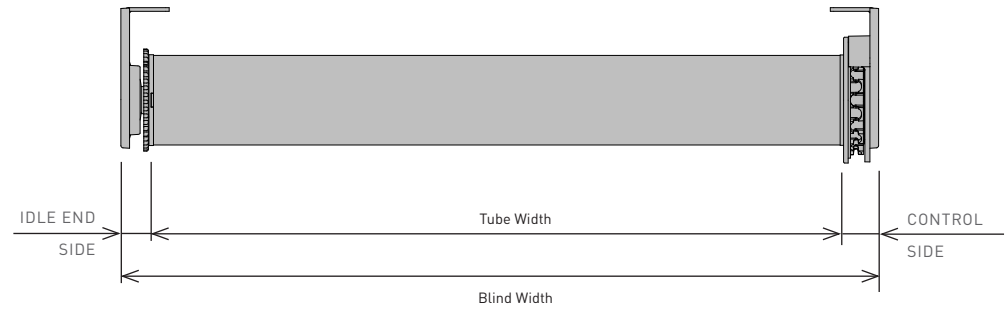
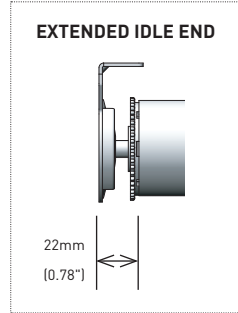


**SPECIFICATIONS: RB08 MKII CHAIN CONTROL S40/ S45 SYSTEM**

**MAX ROLL**



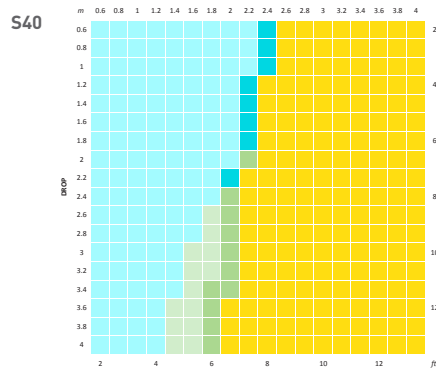
**DEDUCTIONS**



|                                 | IDLE END SIDE | CONTROL SIDE | OVERALL DEDUCTION |
|---------------------------------|---------------|--------------|-------------------|
| VX/AX BRACKETS - with covers    | 15mm [0.59"]  | 17mm [0.66"] | 32mm [1.25"]      |
| VX/AX BRACKETS - withOUT covers | 14mm [0.55"]  | 15mm [0.59"] | 29mm [1.14"]      |

**SYSTEM CAPACITY**

RB08 | Minimum Blind Width: 150mm / 6inches  
 RB08 + RETROFIT | Minimum Blind Width: 750mm / 30inches



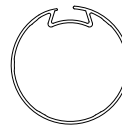
| CONTROL         | LEGEND        | DESCRIPTION              | EASY-LINK REQ. |
|-----------------|---------------|--------------------------|----------------|
| RB08            | [Light Blue]  | S40 HD / STD + 39 SPLINE | [Yellow]       |
|                 | [Dark Blue]   | S40 HD                   | [Yellow]       |
| RB08 + RETROFIT | [Light Green] | S40 HD / STD +39 SPLINE  | [Yellow]       |
|                 | [Dark Green]  | S40 HD                   | [Yellow]       |

**Parameters**  
 Fabric Density: 420gsm  
 Fabric Thickness: 0.6mm  
 Weight Bar: D30 Bottom Rail

**Maximum Hold Weights**  
 S40 | 39 Spline Tube: 5.2kg / 11pounds (RB08), 14.6kg / 32pounds (RB08 + Booster)  
 S40 STD Tube: 5.2kg / 11pounds (RB08), 14.6kg / 32pounds (RB08 + Booster)  
 S40 HD Tube: 5.1kg / 11pounds (RB08), 14.4kg / 32pounds (RB08 + Booster)

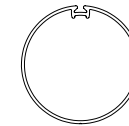
\*Refer to S40/45 Easy-Link QRG for further details

**ALUMINIUM TUBES**



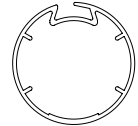
**S40 | 39SPLINE**  
 Aluminium Tube

CODE: RB91-0237-000580  
 with D/S tape RB91-6237-000580  
 O.D.: 39mm  
 Length: 5.8 metres



**S40 | 39 STD T-SPLINE**  
 Aluminium Tube

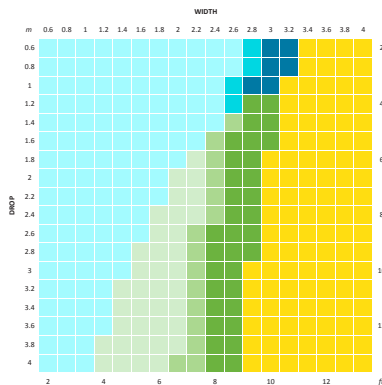
CODE: RB93-0440-000580  
 with D/S tape RB93-6440-000580  
 O.D.: 39mm  
 Length: 5.8 metres



**S40 | 40 HEAVY DUTY**  
 Aluminium Tube

CODE: RB91-0241-000550  
 O.D.: 40mm  
 Length: 5.5 metres

**S45**

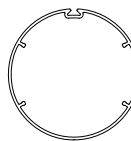


| CONTROL         | LEGEND        | DESCRIPTION       | EASY-LINK REQ. |
|-----------------|---------------|-------------------|----------------|
| RB08            | [Light Blue]  | S45 HD / STD / LT | [Yellow]       |
|                 | [Dark Blue]   | S45 HD / STD      | [Yellow]       |
|                 | [Dark Blue]   | S45 HD            | [Yellow]       |
| RB08 + RETROFIT | [Light Green] | S45 HD / STD / LT | [Yellow]       |
|                 | [Dark Green]  | S45 HD / STD      | [Yellow]       |
|                 | [Dark Green]  | S45 HD            | [Yellow]       |

**Parameters**  
 Fabric Density: 420gsm  
 Fabric Thickness: 0.6mm  
 Weight Bar: D30 Bottom Rail

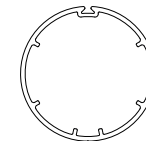
**Maximum Hold Weights**  
 S45 Light Tube: 4.7kg / 10 pounds (RB08), 13.4kg / 30 pounds (RB08 + Booster)  
 S45 STD Tube: 4.6kg / 10 pounds (RB08), 13.0kg / 30 pounds (RB08 + Booster)  
 S45 HD Tube: 4.2kg / 9 pounds (RB08), 11.8kg / 26 pounds (RB08 + Booster)

\*Refer to S40/45 Easy-Link QRG for further details



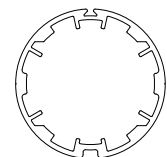
**S45 LIGHT**  
 T-Spline Tube

CODE: RB93-0443-000580  
 with D/S tape RB93-6443-000580  
 O.D.: 43mm  
 Length: 5.8 metres



**S45 STANDARD**  
 T-Spline Tube

CODE: RB93-0444-000580  
 with D/S tape RB93-6444-000580  
 O.D.: 44mm  
 Length: 5.8 metres



**S45 HEAVY DUTY**  
 T-Spline Tube

CODE: RB93-0449-000580  
 with D/S tape RB93-6449-000580  
 O.D.: 49mm  
 Length: 5.8 metres