

Wire-Free Li-ion Zero Q1.1

Ultra-quiet, rechargeable, battery-powered. This Wire-Free motor is perfect for small to medium shade applications.



UNIQUE MOTOR HEAD DESIGN
A slim motor head for a minimal light-gap and a purpose-designed groove for the antenna cable.



INNOVATIVE MOTOR CAP
This optional, decorative cover ensures that all wires are completely out of sight.



ULTRA-QUIET
Acoustically engineered to insulate sound, this is our quietest Automate motor yet.



ELEGANT SOFT STOP
The smooth action slows the motor down upon shade closure, quietly coming to an elegant stop.



BATTERY CHECK ACTION
Easily check battery level with one touch of the remote, moving the shade to indicate battery percentage.



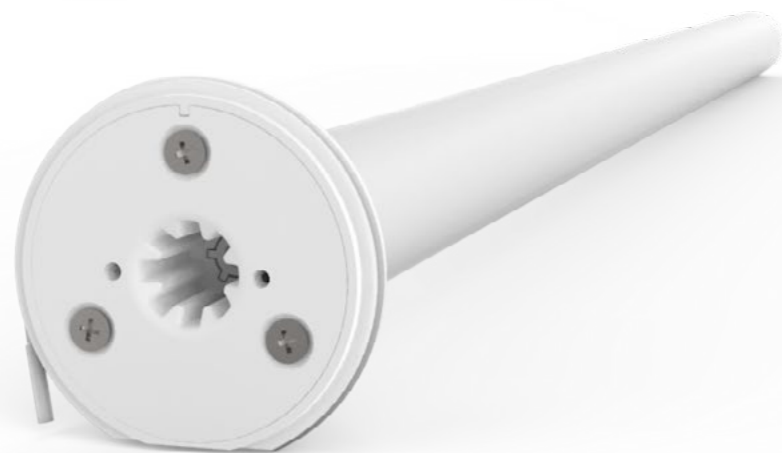
MICRO USB CHARGING
Quickly and conveniently charge the motor with any micro USB cable charger.



SECURE HOLD
Motor head design accommodates 12mm tongue brackets for a strong, secure hold.



SIMPLIFIED RETRO-FIT
The slim motor head retains manual system deductions, eliminating the need for bracket adjustment.



5 YEAR WARRANTY



ARC™ (Automate Radio Communication) is Rollease Acmeda's proprietary technology utilising 433MHz radio communication with bi-directional feedback that brings Automate motorised shading systems together.



© Rollease Acmeda Pty Ltd

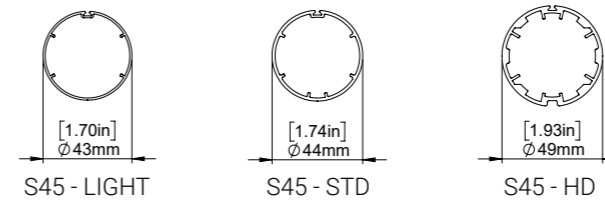
PRODUCT SPECIFICATIONS

Part #: MT01-1325-069003 Automate Wire-Free Li-ion Zero Q1.1

Part #: MT01-1325-069005 Automate Wire-Free Li-ion Zero Q1.1 (Short)

Voltage	5	Limit Switch Type	Electronic
Torque	1.1Nm	Current	0.96 A
Max Run Time	12 min.	Battery Size/Type	2200mAH
Speed	20 RPM (Adjustable to 24 or 28)	Temp Working Range	32°F to 140°F (0°C to 60°C)
Radio Frequency	433.92 MHz	Insulation Class	III
RF Modulation	FSK	Sound Level	~46 dB
IP Rating	IP44	Power	8 W

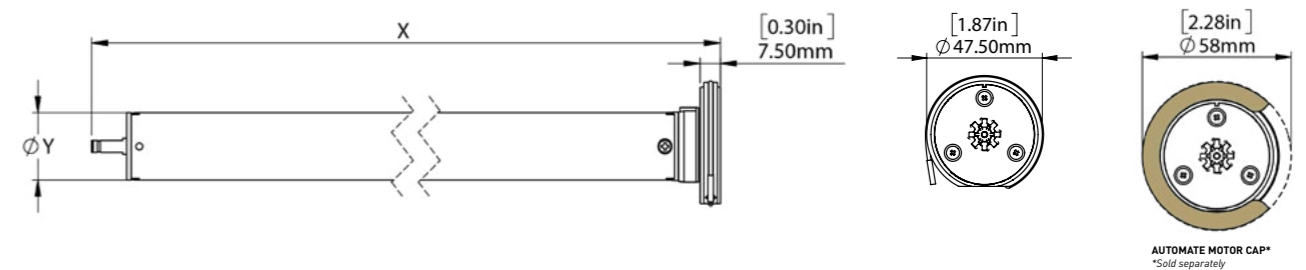
COMPATIBLE TUBES



APPLICATIONS

- Roller Shades
- Roman Shades

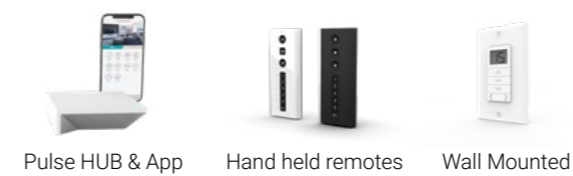
DIMENSIONS



MOTOR	DIM X	DIM Y
SHORT	[18.86"] 479mm	[0.98"] 25mm
LONG	[21.72"] 552mm	[0.98"] 25mm

COMPATIBLE PRODUCTS (refer to catalog for full item listings)

Controllers



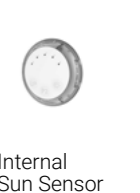
Charging Options



Motor Cap



Sensors



© Rollease Acmeda Pty Ltd