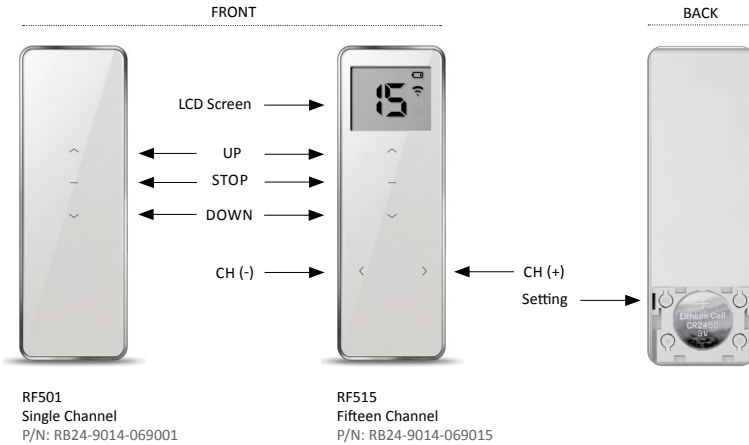


AUTOMATE RF500s REMOTE INSTRUCTIONS

RF501s Single Channel & RF515s Fifteen Channel Remote Controls



DESCRIPTION

433MHz hand held transmitter compatible with AUTOMATE “EL” motor range.
 Available in single channel or fifteen channel with LCD display.
 Hidden inactive channel feature.
 Touch sensitive control.
 Slimline magnetic wall mount holder.

CONTENTS

- Transmitter
- Magnetic holder & fixing screws
- Instruction Manual
- 3V - CR2450 Battery

TECHNICAL SPECIFICATIONS	
Voltage:	3V (CR2450)
Frequency:	433.92 MHz
Transmitting Power:	10 milliwatt
Operating Temperature:	-10 °C - 50 °C
Transmission Distance:	up to 200 meters (open space)



INSTR.RB24-9014_JULY 2015 v1.1

CONTENTS

Pair RF500 series remote to EL motor	p3
Setting top & bottom limits to EL motor	p4
Setting number of active channels	p5
Copy channels from an existing primary transmitter	p6
Troubleshooting	p7

CAUTION

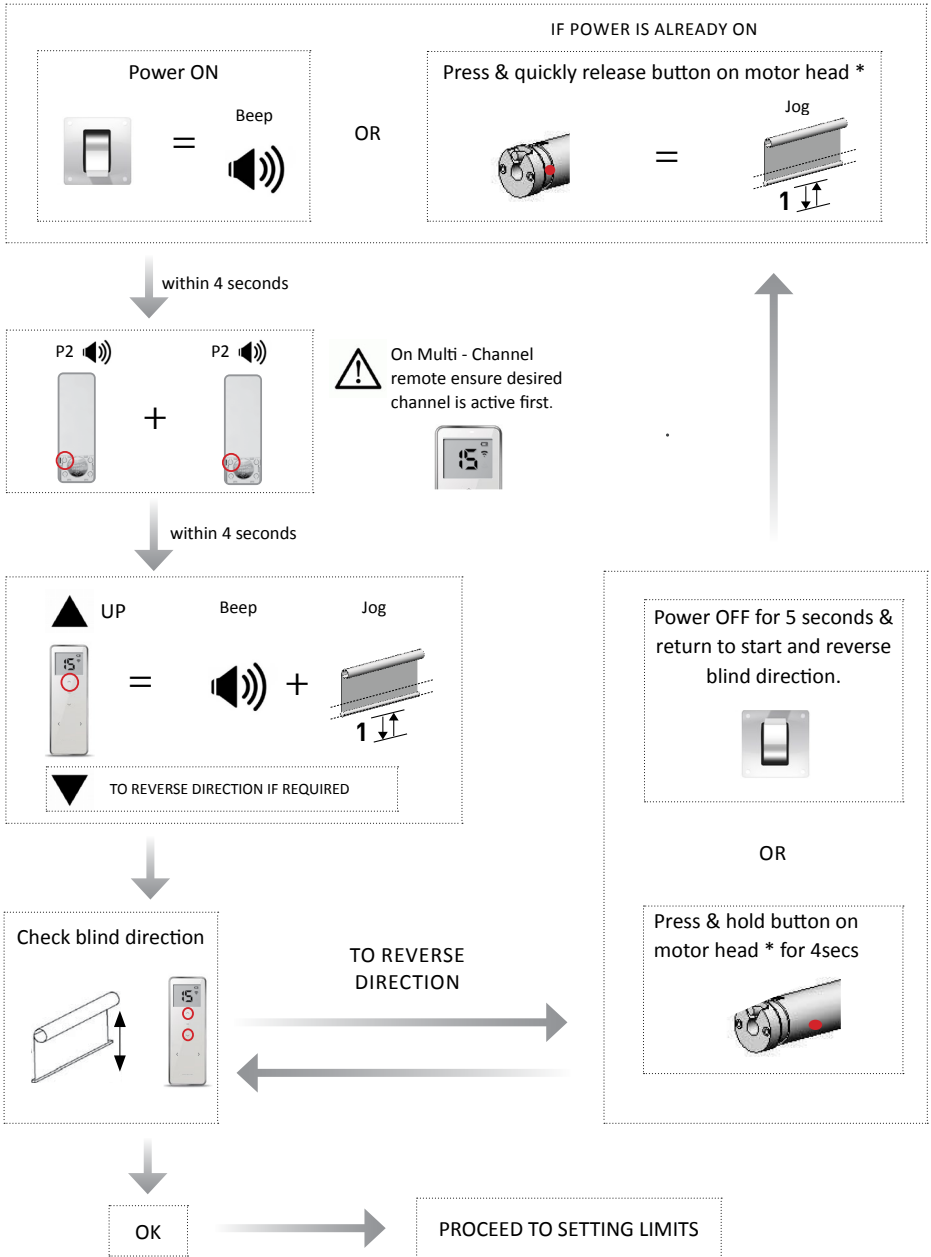
Do not expose to moisture or extreme temperatures
Replace with correct battery type as specified
Do not allow children to play with this device or battery.
Use or modification outside the scope of this instruction manual will void warranty.

DISPOSAL



Do not dispose of in general waste. Please recycle batteries and damaged electrical products appropriately

PAIR RF500 SERIES REMOTE TO EL MOTOR



Cutting power before limit setting process is complete will result in loss of pairing.

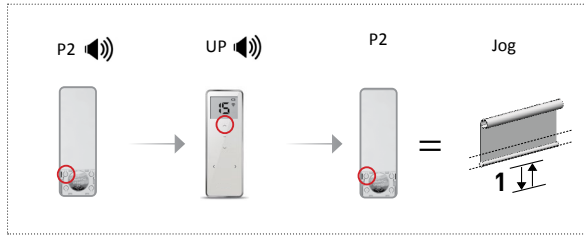
To reset motor P2 + STOP + P2. Removes all emitters & deletes limits.

SETTING TOP & BOTTOM LIMITS TO AUTOMATE EL MOTOR

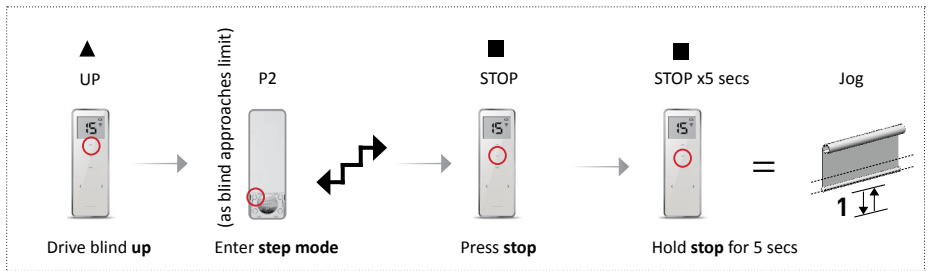
ENTER LIMIT SETTING MODE



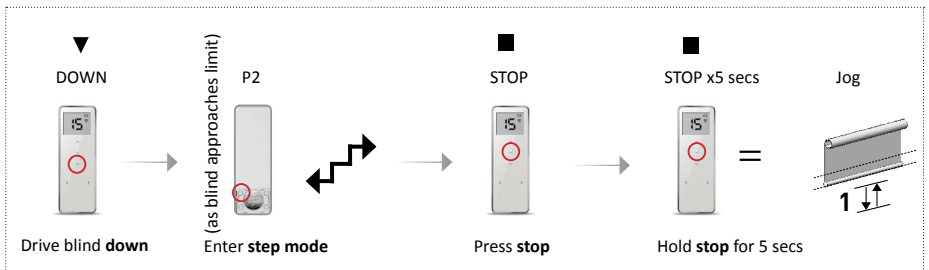
Please cycle blind up and down to settle fabric prior to setting limits



SET TOP LIMIT



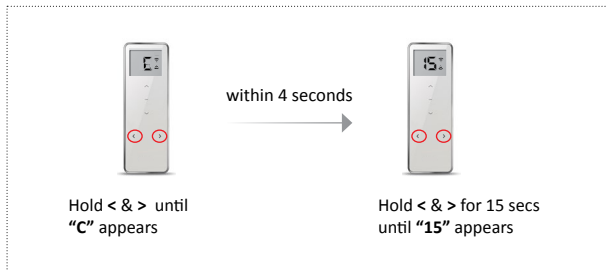
SET BOTTOM LIMIT



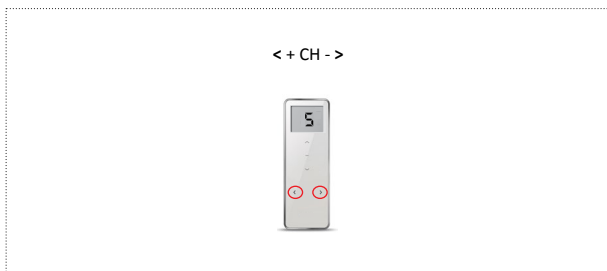
If pairing multiple motors to a single channel ensure power is switched off prior to proceeding to the next motor.
Cycle blind up and down first to settle fabric prior to setting limits

SETTING NUMBER OF ACTIVE CHANNELS

ENTER CHANNEL SELECTION MODE



SELECT DESIRED CHANNEL RANGE

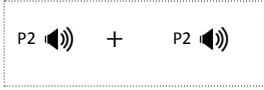


CONFIRM



COPY CHANNEL FROM AN EXISTING PRIMARY TRANSMITTER.

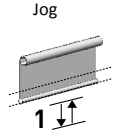
ON PRIMARY TRANSMITTER



ON NEW TRANSMITTER



=



On primary & secondary multi - channel remotes ensure desired channel is active first.

HOW TO ACTIVATE P2 FUNCTION

RF500s



Press P2

RF400s



Single Channel / Timer

P2 = zero & CH (+)



Fifteen Channel

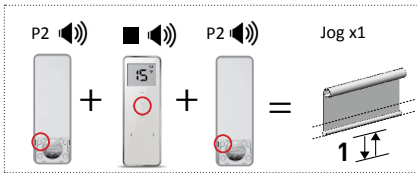
P2 = zero

TROUBLESHOOTING

PROBLEM	CAUSE	REMEDY
Motor is not responding	Transmitter battery is discharged	Replace battery
	Battery is inserted incorrectly	Check battery polarity
	Radio interference / Shielding	Ensure transmitter is positioned away from metal objects and that aerial on motor or receiver is kept straight and away from metal.
	Receiver distance is too far from transmitter	Move transmitter to a closer position.
	Power failure	Check power supply to motor is connected and active.
	Incorrect wiring	Check wiring is connected correctly (refer to motor installation instructions)



How to delete all transmitters & limits. P2 + STOP + P2.



ROLLEASE ACMEDA
AUSTRALIA

110 Northcorp Boulevard,
Broadmeadows VIC 3047

T +61 3 9355 0100 | F +61 3 9355 0110

Western Australia Branch
Unit 1, 41 Mulgool Road,
Malaga WA 6090

T +61 8 9248 5571 | F +61 8 9248 5572

Queensland Branch
Unit 2/62 Borthwick Avenue,
Murarrie QLD 4172

ROLLEASE ACMEDA
USA

200 Harvard Avenue
Stamford, CT 06902 6320

T +1 203 964 1573 | F +1 203 964 0513

ROLLEASE ACMEDA
EUROPE

Via Conca Del Naviglio 18, Milan
(Lombardia) Italy

T +39 02 8982 7317 | F +39 02 8982 7317

info@rolleaseacmeda.com
rolleaseacmeda.com