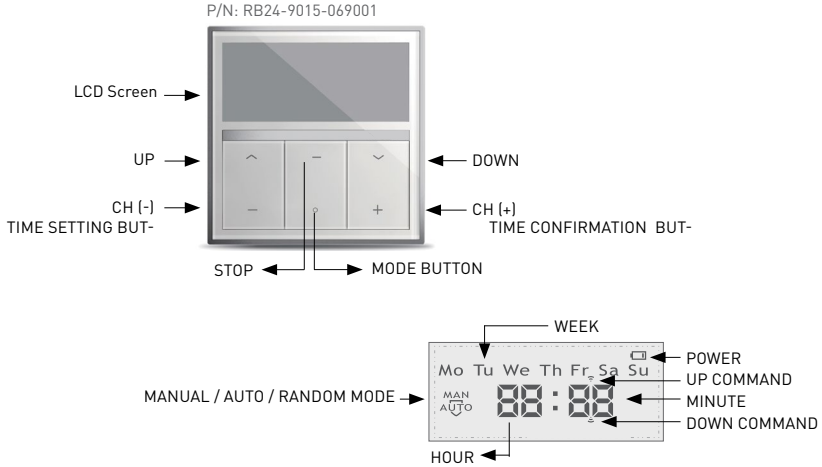


AUTOMATE RF401s REMOTE INSTRUCTIONS

RF401s Single Channel Remote Control / With Timer



DESCRIPTION



AUTOMATE RF401s is a Single channel 433MHz wall mounted control-compatible with the AUTOMATE EL motor range. It includes a daily Timer Function and large LCD display.

CONTENTS

- Wall mount transmitter
- Magnetic holder & fixing screws
- Instruction Manual
- 3V - CR2430 Battery

TECHNICAL SPECIFICATIONS

Voltage:	3V (CR2430)
Frequency:	433.92 MHz
Transmitting Power:	10 milliwatt
Operating Temperature:	-5°C - 50°C
Transmission Distance:	up to 200 meters (open space)



CONTENTS

Pair RF401s wall controller to EL motor	p3
Setting top & bottom limits to EL motor	p4
Copy channels from an existing primary transmitter	p5
Manual / Auto & Random timer modes	p6
Time & Day setting	p6
Timer Settings	p7
Troubleshooting	p8

CAUTION

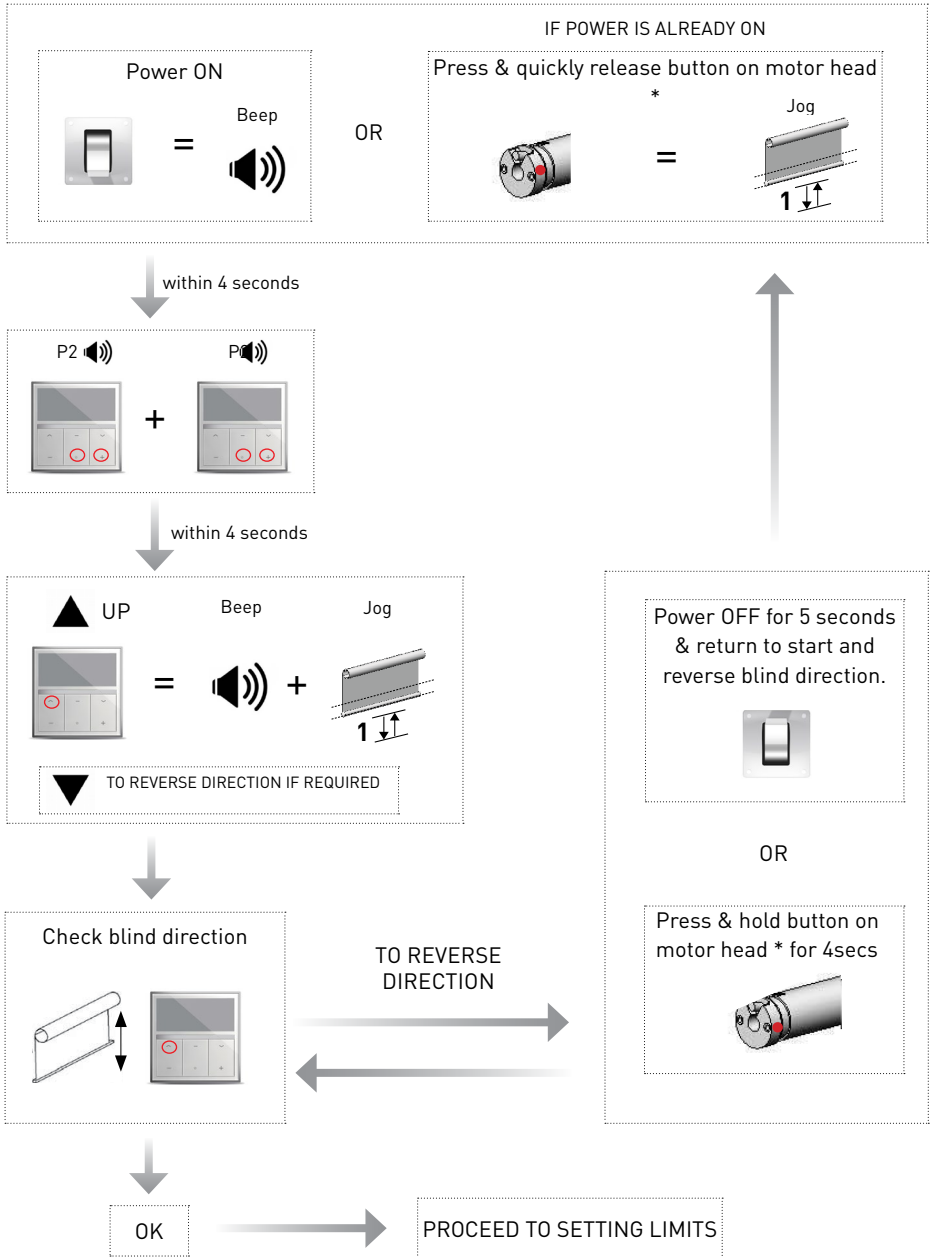
Do not expose to moisture or extreme temperatures
Replace with correct battery type as specified
Do not allow children to play with this device or battery.
Use or modification outside the scope of this instruction manual will void warranty.

DISPOSAL



Do not dispose of in general waste. Please recycle batteries and damaged electrical products appropriately

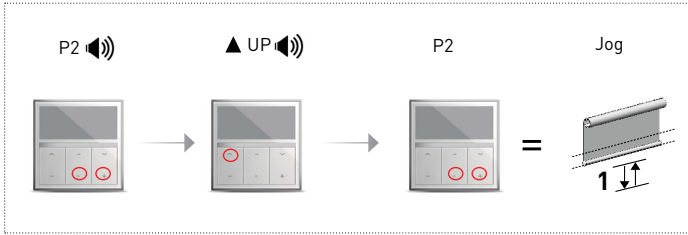
PAIR RF401s WALL CONTROLLER TO EL MOTOR




Cutting power before limit setting process is complete will result in loss of pairing.
To reset motor P2 + STOP + P2. Removes all emitters & deletes limits.

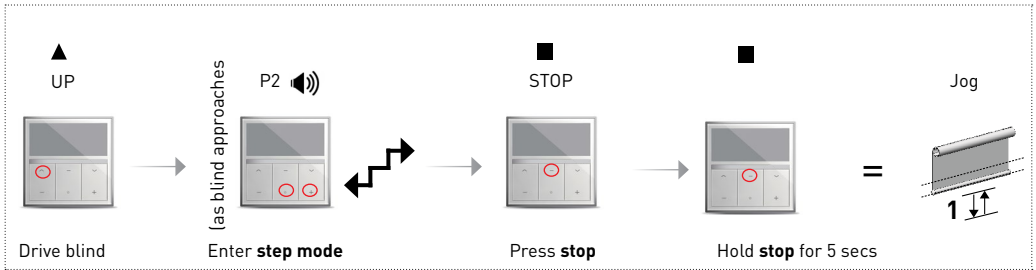
SETTING TOP & BOTTOM LIMITS TO AUTOMATE EL MOTOR

ENTER LIMIT SETTING MODE

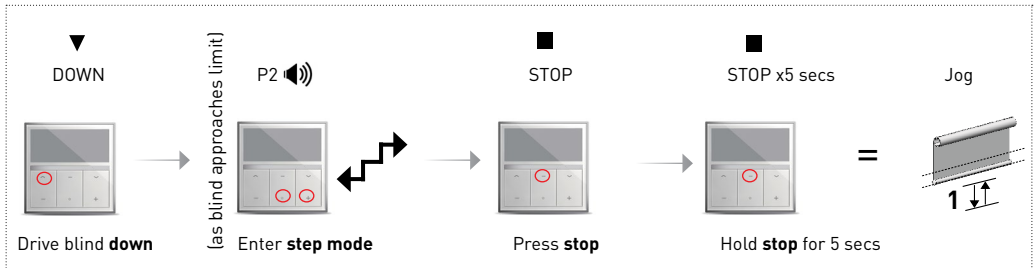


 Please cycle blind up and down to settle fabric prior to setting limits

SET TOP LIMIT



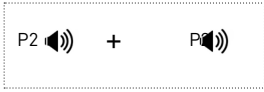
SET BOTTOM LIMIT



If pairing multiple motors to a single channel ensure power is switched off prior to proceeding to the next motor.

COPY CHANNEL FROM AN EXISTING PRIMARY TRANSMITTER.

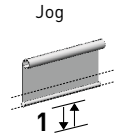
ON **PRIMARY** TRANSMITTER



ON **NEW** TRANSMITTER



=



On primary & secondary multi - channel remotes ensure desired channel is active first.

HOW TO ACTIVATE P2 FUNCTION

RF500s



Press P2

RF400s



P2 = **zero & CH (+)**

MANUAL / AUTO / RANDOM MODES

The RF401s wall controller can operate in three different modes.

MAN MANUAL MODE.

AUTO AUTOMATIC TIMER MODE.

AUTO RANDOM AUTOMATIC TIMER MODE.
(Signal is emitted within 15min. of the set time).

TO SWITCH BETWEEN MODES

MAN
AUTO
AUTO



Hold **MODE** for 2 sec.

TIME & DAY SETTING



Before starting ensure **MANUAL** mode is active first.



ENTER SETTING MODE



Hold **TIME SETTING** BUTTON for 3 sec.

Press **TIME SETTING** BUTTON again to toggle between **HOURL / MINUTE** or **DAY** settings.

ADJUST TIME & DAY



Adjust by pressing **UP** or **DOWN**



EXIT SETTING MODE



Hold **TIME CONFIRM** button >3 sec.
(**HOURL & MIN** FLASHES)

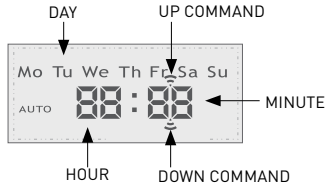
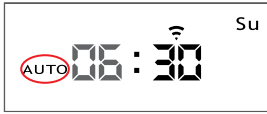


Short press **TIME SETTING** button to start clock. The seconds indicator ":" will start to flash

TIMER SETTINGS



Before starting ensure **AUTO** mode is active.



ENTER TIMER SETTING MODE

Hold **TIME SETTING** BUTTON for 3 sec.



SET UP & DOWN COMMAND FOR EACH DAY



To Switch between Functions & Settings press the following buttons:

PRESS	ACTION
(-)	Switch between HOUR or MINUTE
(0)	Switch between UP & DOWN command
(+)	Switch DAY

Adjust setting by pressing **UP** or **DOWN** ▲ ▼

CONFIRM AND EXIT TIMER SETTING MODE



Hold **TIME CONFIRM** button >3 sec or wait 60 seconds. (HOUR & MIN FLASHES)

SETTING TIME TO "--:--" WILL DISABLE TIMER FUNCTION FOR A PARTICULAR EVENT SETTING.

TIMER SETTING MODE WILL AUTOMATICALLY EXIT AFTER 60 SECONDS.

A MINIMUM INTERVAL OF 32 MINUTES IS REQUIRED BETWEEN UP & DOWN COMMANDS. SETTING AN UP / DOWN INTERVAL WITHIN 32 MINUTES WILL RESULT IN AN ERROR "ER01"

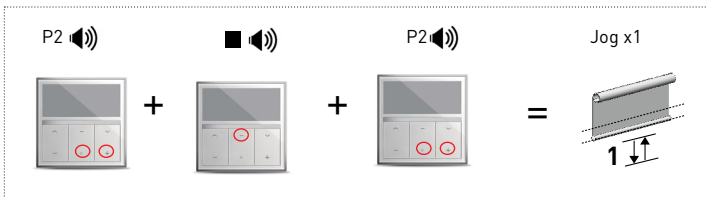


TROUBLESHOOTING

PROBLEM	CAUSE	REMEDY
Motor is not responding	Transmitter battery is discharged	Replace battery
	Battery is inserted incorrectly	Check battery polarity
	Radio interference / Shielding	Ensure transmitter is positioned away from metal objects and that aerial on motor or receiver is kept straight and away from metal.
	Receiver distance is too far from transmitter	Move transmitter to a closer position.
	Power failure	Check power supply to motor is connected and active.
"ER01" appears on LCD	Incorrect wiring	Check wiring is connected correctly (refer to motor installation instructions)
	Timer UP & DOWN settings are within 32 minutes to each other.	Re-program timer settings. UP & DOWN times must be greater than 32 minutes of each other.



How to delete all transmitters & limits. P2 + STOP + P2.



ROLLEASE ACMEDA AUSTRALIA

110 Northcorp Boulevard,
Broadmeadows VIC 3047
T +61 3 9355 0100 | F +61 3 9355 0110

Western Australia Branch
Unit 1, 41 Mulgool Road,
Malaga WA 6090
T +61 8 9248 5571 | F +61 8 9248 5572

Queensland Branch
Unit 2/62 Borthwick Avenue,
Murarrie QLD 4172

ROLLEASE ACMEDA USA

200 Harvard Avenue
Stamford, CT 06902 6320
T +1 203 964 1573 | F +1 203 964 0513

ROLLEASE ACMEDA EUROPE

Via Conca Del Naviglio 18, Milan
(Lombardia) Italy
T +39 02 8982 7317 | F +39 02 8982 7317

info@rolleaseacmeda.com
rolleaseacmeda.com