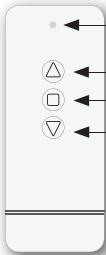
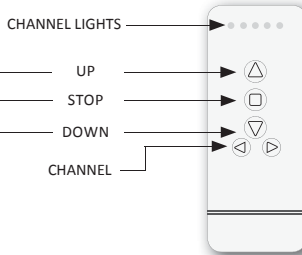


## RF200 SERIES REMOTE OVERVIEW

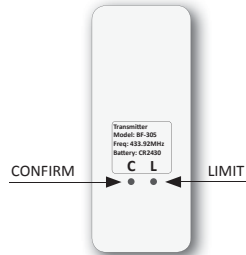
### SINGLE CHANNEL REMOTE



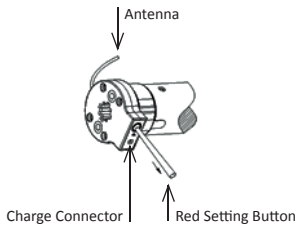
### FIVE CHANNEL REMOTE



### BACK OF REMOTE



## MOTOR HEAD



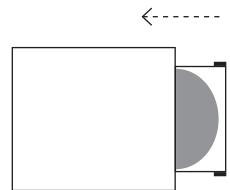
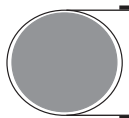
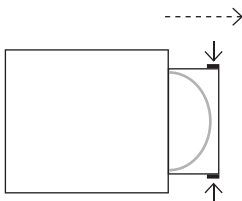
## TECHNICAL DATA

Capacity	1.1Nm
Frequency	433.92MHz
RPM	25
Volts	7 volts
Protective rating	IP40
Current	0.8 amps

- WHEN INSTALLING, ENSURE THE BUTTON ON THE MOTOR HEAD IS ACCESSIBLE.
- THE ANTENNA ON THE MOTOR SHOULD BE AS STRAIGHT AS POSSIBLE AND AWAY FROM DIRECT CONTACT OF METALS WHERE POSSIBLE.
- CHARGE MOTOR BEFORE INSTALLING (IT TAKES APPROX. 3 HOURS) OR CHARGE MOTOR WHILE PROGRAMMING.
- INSERT BATTERY PROVIDED INTO BACK OF REMOTE.
- USE A BLUNT OBJECT TO PRESS C & L BUTTONS

## INSERTING BATTERY

1. Remove battery case from remote.  
(Squeeze sides together to disengage top)
2. Place battery into casing.  
(Button battery lithium CR2430 3V)
3. Flip over and insert into remote.



## CHARGING THE MOTOR

### WITH CHARGER

When the motor charger is connected to power, a green LED light will illuminate to show power is available.

When charger is then connected to motor head for charging, LED turns red indicating motor is charging.

LED light will turn green once motor is fully charged.  
This can take 3 hours or more.

### WITH SOLAR PANEL CHARGER

When using a solar panel to charge the motor, ensure the solar panel is directed towards the sun and is installed in a water free environment. Solar panels are not water proof, and require adequate protection from the weather elements.

Solar panel can be attached to motor to continuously charge the lithium battery inside the motor.

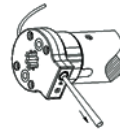
When the battery voltage is low (5.4V), the solar panel will charge the battery.

When the battery voltage reaches 8.4V (max volts for motor), charging will stop.

## RETURN TO FACTORY SETTINGS

Press the red button until the motor jolts twice

MOTOR IS NOW READY FOR PAIRING WITH NEW REMOTE

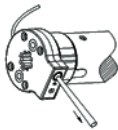


Keep pressing until motor jolts twice

## PROGRAMMING A MOTOR IN 5 SIMPLE STEPS

### STEP 1 PAIRING REMOTE TO MOTOR

Press the red button on the motor for approximately 3 seconds until the motor jolts once.



Keep pressing for 3s

Press C button on the back of the remote within 6 seconds (motor will jolt to confirm pairing of remote)



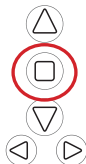
THE REMOTE IS NOW PAIRED WITH THE MOTOR.

### STEP 2 CHECK DIRECTION OF BLIND

If blind is travelling in opposite direction of up/down buttons, change blind direction.

Press the Stop and L buttons at the same time until motor jolts.

(Do not hold buttons down for too long or motor will jolt again and change direction back).



### STEP 3 SET MOTOR INTO LIMIT SETTING MODE

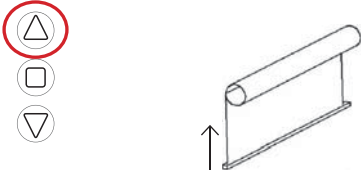
Press the L button on the back of remote until motor jolts.



MOTOR IS NOW IN LIMIT SETTING MODE

### STEP 4 SET UPPER LIMIT FIRST

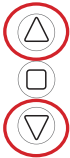
Press the UP button on remote to send blind up.



As the blind approaches the desired position, press stop.



Adjust the blind using up and down buttons.  
Motor will move in step mode for accuracy.



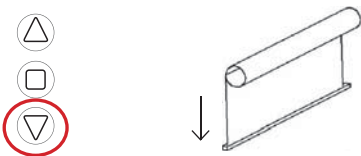
Press C button on back of remote to confirm position.  
(Motor will jolt to confirm position)



UPPER LIMIT IS NOW SET

### STEP 5 SET LOWER LIMIT

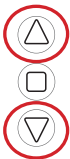
Press the Down button on remote to send blind down.



As the blind approaches the desired position, press stop.



Adjust the blind using up and down buttons.  
(Motor will move in step mode for accuracy)



Press C button on back of remote to confirm position.  
(Motor will jolt to confirm position)

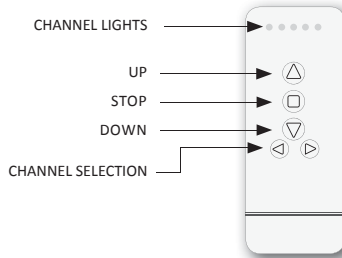


LOWER LIMIT IS NOW SET

**TIP**  
While programming limits (e.g. UP), if motor is set to step mode sooner than desired, go back to Step 3.

# PROGRAMMING WITH A MULTI-CHANNEL REMOTE

Follow previous steps outlined to programme and set limits of motors on channels desired.  
To operate all motors at the same time, use channel selection buttons to light up all channels.  
Press either Up or Down buttons to operate blinds.

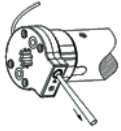


## MOTOR GROUP SETTINGS

### SET LIMITS ON A CHANNEL, THEN COPY SETTINGS TO A GROUP CONTROL CHANNEL

1

Program **MOTOR 1**, following the 5 step procedure, then press red button on motor for approximately 3 seconds until motor jolts once.



Keep pressing for 3s

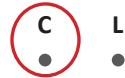
2

Choose a group control channel



3

Press C button within 6 seconds until motor jolts  
(Motor will jolt to confirm pairing of remote)



SETTINGS ARE NOW COPIED  
ONTO SELECTED GROUP CHANNEL

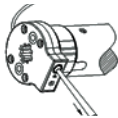
### REPEAT STEPS 1 TO 3 ON MULTIPLE MOTORS TO CREATE A SUBGROUP

## PROGRAMMING TWO MOTORS ONTO THE SAME CHANNEL

### SET LIMITS OF MOTOR 1 FOLLOWING 'PROGRAMMING A MOTOR IN 5 SIMPLE STEPS'

1

Press red button on **MOTOR 1** for 8 seconds.  
(During 8 seconds, motor will jolt once, pause, then jolt again)  
This will disconnect remote from motor

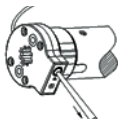


2

Set limits of **MOTOR 2** as normal on the same channel  
by following 'Programming a Motor in 5 Simple Steps'

3

Re-engage **MOTOR 1** with remote  
Press red button on motor for 3 seconds until motor jolts once.



4

Press C button on back of remote within 6 seconds  
(Motor will jolt to confirm pairing of remote)



MOTORS WILL NOW OPERATE TOGETHER ON THE SAME CHANNEL  
FOLLOW SAME PROCEDURE FOR MORE THAN TWO MOTORS.