

# AUTOMATE A.R.T MOTION SENSOR INSTRUCTIONS



AUTOMATE A.R.T | Motion Sensor  
P/N: RB24-9300-069003



## DESCRIPTION

Awning motion sensor with A.R.T. (AUTOMATE REACTIVE TECHNOLOGY).  
Compatible with AUTOMATE awning motors and controllers.  
Suitable for fitting to awning terminal bars.  
Provides protection from excessive wind gusts.  
9 x levels of sensitivity  
Low battery warning

## CONTENTS

- Motion Sensor
- Fixing screws
- Instruction Manual

TECHNICAL SPECIFICATIONS	
Voltage:	3V (CR2450)
Frequency:	433MHz
Transmitting Power:	10 milliwatt
Operating Temperature:	-20°C - 55°C
Transmission Distance:	up to 200 meters (open space)



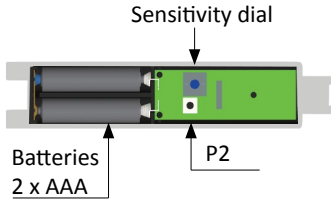
INSTR.RB24-9003-069003\_JULY 2015 v1.0

# CONTENTS

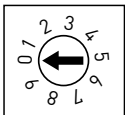
Pair to Primary remote

p3

## FUNCTIONALITY



### Multi-Function / P2 Operation



Dial Set to 0 = Pairing mode (P2) / Sensor inactive mode.

Dial Set to 5 = Up Button

Dial Set to 9 = Down Button

Sensitivity 1 = Highest

9 = Lowest



Adjust sensitivity accordingly. Too high could cause awning to retract under normal operation.

#### CAUTION


Do not expose to moisture or extreme temperatures  
Replace with correct battery type as specified  
Do not allow children to play with this device or battery.  
Use or modification outside the scope of this instruction manual will void warranty.

#### DISPOSAL



Do not dispose of in general waste. Please recycle batteries and damaged electrical products appropriately.

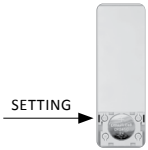
# PAIRING TO A.R.T SERIES MOTION SENSOR

 Ensure primary remote has already been paired with motor.

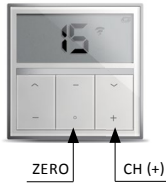
Adjust sensitivity to zero



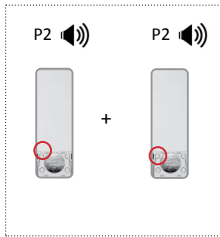
## REMOTE OVERVIEW



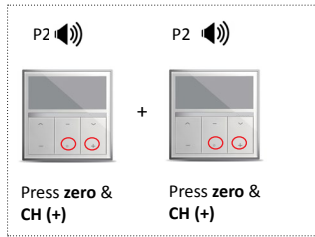
## REMOTE OVERVIEW



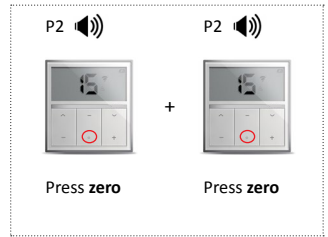
using primary RF500 remote




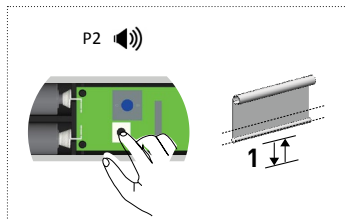
using primary RF401 single channel / timer remote



using primary RF415 fifteen channel remote



 On Multi Channel remote ensure desired channel is active first.



# TROUBLESHOOTING

PROBLEM	CAUSE	REMEDY
Motor is not responding	Transmitter battery is discharged	Replace battery
	Battery is inserted incorrectly	Check battery polarity
	Radio interference / Shielding	Ensure transmitter is positioned away from metal objects and that aerial on motor or receiver is kept straight and away from metal.
	Receiver distance is too far from transmitter	move transmitter to a closer position.
	Power failure	Check power supply to motor is connected and active.
	Incorrect wiring	Check wiring is connected correctly (refer to motor installation instructions)
	Pairing error	Set dial to 5 or 9 and press multi function button to verify motor reacts.
Awning constantly retracts during operation.	Sensitivity set too high	reduce sensitivity
Awning does not react to wind setting	Wind Sensitivity is too low	adjust sensitivity
	Duration of wind intensity level is less than 3 seconds	wind gust durations must be over 3 seconds to trigger.
Sensor causes awning to extend instead of retract	Direction is incorrect	reverse direction by holding multi function button for 5 seconds. (Sensor will beep at first press then beep again)
Sensor beeps every five seconds	flat batteries	replace batteries with correct type.

## ROLLEASE ACMEDA

### AUSTRALIA

110 Northcorp Boulevard,  
Broadmeadows VIC 3047

T +61 3 9355 0100 | F +61 3 9355 0110

Western Australia Branch  
Unit 1, 41 Mulgool Road,  
Malaga WA 6090

T +61 8 9248 5571 | F +61 8 9248 5572

Queensland Branch  
Unit 2/62 Borthwick Avenue,  
Murarrie QLD 4172

## ROLLEASE ACMEDA

### USA

200 Harvard Avenue  
Stamford, CT 06902 6320

T +1 203 964 1573 | F +1 203 964 0513

## ROLLEASE ACMEDA

### EUROPE

Via Conca Del Naviglio 18, Milan  
(Lombardia) Italy

T +39 02 8982 7317 | F +39 02 8982 7317

[info@rolleaseacmeda.com](mailto:info@rolleaseacmeda.com)  
[rolleaseacmeda.com](http://rolleaseacmeda.com)