

AERO - SINGLE ROLLER SYSTEM S45

Our new AERO single roller system, offers a premium aesthetically pleasing and technologically advanced solution. Controlled with either a chain or independent spring mechanism, the blind will open and close to your preferred top and bottom locations in a smooth and controlled motion, with one simple touch.

AESTHETICAL FEATURES

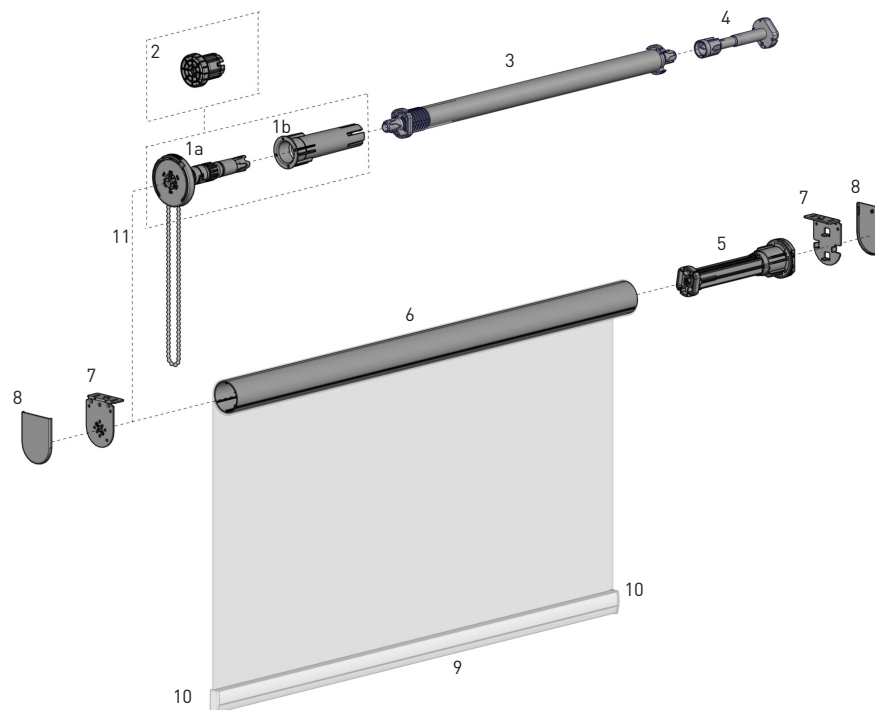
- Minimal light gaps
- Compatible with standard bracket covers for a neat finish.
- Optional square or round enclosed headbox.

PRODUCTION / ASSEMBLY FEATURES

- Easy pre-tensioning through control bracket
- Revolutionary top and bottom limit setting function, with easy push button control.
- Colour coded LH & RH hardware for quick & easy assembly.
- Self-locating chain winder feature for effortless installation.

FUNCTIONAL BENEFITS

- Semi-Automatic functionality - auto rise and manual lowering
- Alternative chainfree operation
- Top and bottom limit settings for a refined user experience.
- Can be installed onto face, top & recess applications.
- Patent protected
- Decelerator for smooth controlled movement.
- Compatible with Easy-Link (refer to charts)

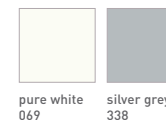


*LH Control Shown

SYSTEM INDEX

1a	AERO Single Chain Winder
	RB12-3100-xxx140 - Chain Control LH
	RB12-3100-xxx240 - Chain Control RH
1b	AERO Connector - Chain Winder/Booster
	RB12-4510-xxx045
2	AERO Single Chainfree Control S45
	RB12-3200-xxx040 - Chainfree Control
3	Booster Uni.
	RB12-4500-xxx045 - Short
	RB12-4501-xxx045 - Light
	RB12-4502-xxx045 - Standard
	RB12-4503-xxx045 - Heavy Duty
4	Booster Decelerator
	RB12-7101-xxx145 - LH
	RB12-7102-xxx245 - RH
5	AERO Limiter Idle End
	RB12-6001-xxx145 - LH
	RB12-6002-xxx245 - RH
6	S45 Aluminium Tube
	RB93-044#-000580 - LIGHT, STD or HD
7	AERO Single LX Bracket - Chain Winder/Limiter
	RB12-2100-xxx040 - Chain Control
	RB12-2200-xxx040 - Chainfree Control
8	Bracket Cover LX/VX
	RB08-4151-xxx040
9	D30 SILENT Medium Alum. Bottom Rail
	RB91-1232-xxx580
10	D30 Medium Bottom Rail End Caps
	RB91-2131-xxx002
11	Chain and Accessories

COLOUR RANGE

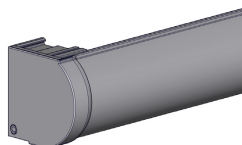


pure white
069

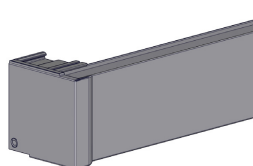
silver grey
338

SYSTEM OPTIONS

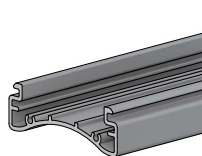
Round Cassette



Square Cassette

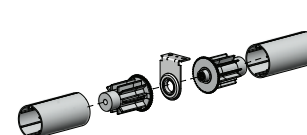


Mounting Rail



SYSTEM UPGRADES

Easy-Link



CONTROL OPTIONS

CHAIN CONTROL

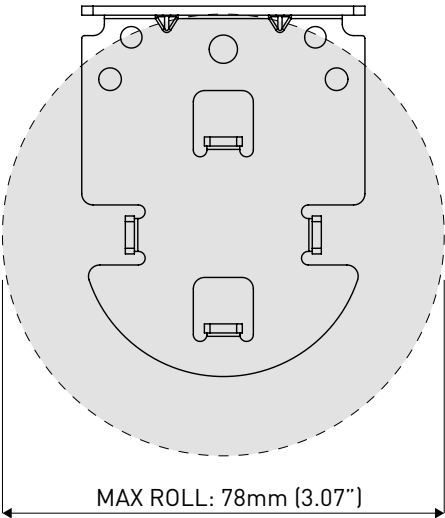


CHAINFREE

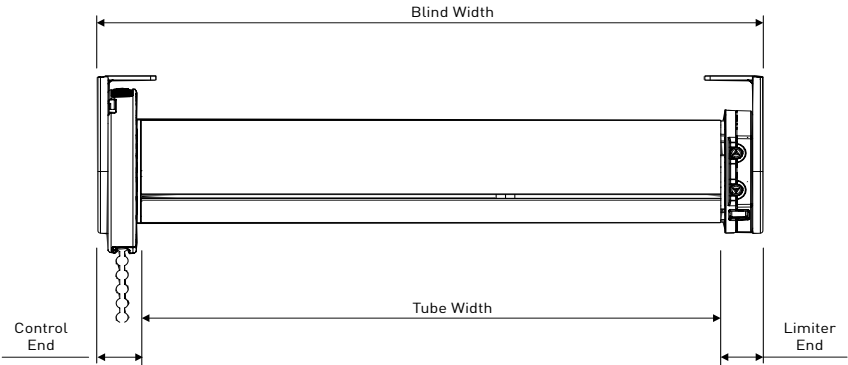


SPECIFICATIONS

MAX ROLL

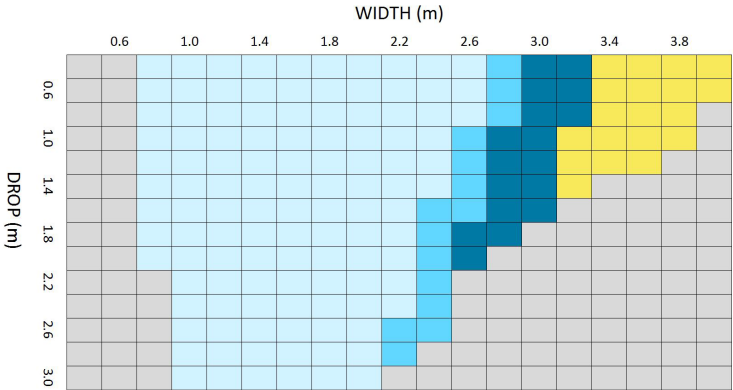


DEDUCTION



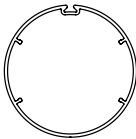
CONTROL TYPE	CONTROL END		LIMITER END	
	With Covers	WithOUT Covers	With Covers	WithOUT Covers
CHAIN CONTROL	18mm [0.71"]	16mm [0.63"]	17mm [0.67"]	15mm [0.59"]
CHAINFREE CONTROL	15mm [0.59"]	14mm [0.55"]	17mm [0.67"]	15mm [0.59"]

SYSTEM CAPACITY



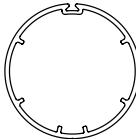
LEGEND	DESCRIPTION
Light Blue	S45 LIGHT STANDARD HEAVY DUTY
Medium Blue	S45 STANDARD HEAVY DUTY
Dark Blue	S45 HEAVY DUTY
Yellow	EASY-LINK
Grey	OUTSIDE SPECIFICATION

TUBE SPECS



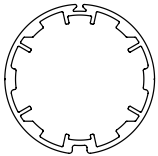
S45 LIGHT T-Spline Tube

Code: RB93-0443-000580
RB93-6443-000580 (with D/S tape)
OD: 43mm [1.69"]
Length: 5.8m [19.029ft]



S45 STANDARD T-Spline Tube

Code: RB93-0444-000580
RB93-6444-000580 (with D/S tape)
OD: 44mm [1.73"]
Length: 5.8m [19.029ft]



S45 HEAVY DUTY T-Spline Tube

Code: RB93-0449-000580
RB93-6449-000580 (with D/S tape)
OD: 49mm [1.92"]
Length: 5.8m [19.029ft]