

S45 AUTOMATE 0.7Nm & 1.1Nm | 25mm

The motorized 25mm 0.7Nm & 1.1Nm S45 roller shade system offers motors for multiple tube diameters to suit a variety of applications. Featuring ARC (Automate Radio Communication), the motorized 25mm 0.7Nm & 1.1Nm S45 system provides an intelligent, Li-ion battery or DC powered solution.

AESTHETICAL FEATURES

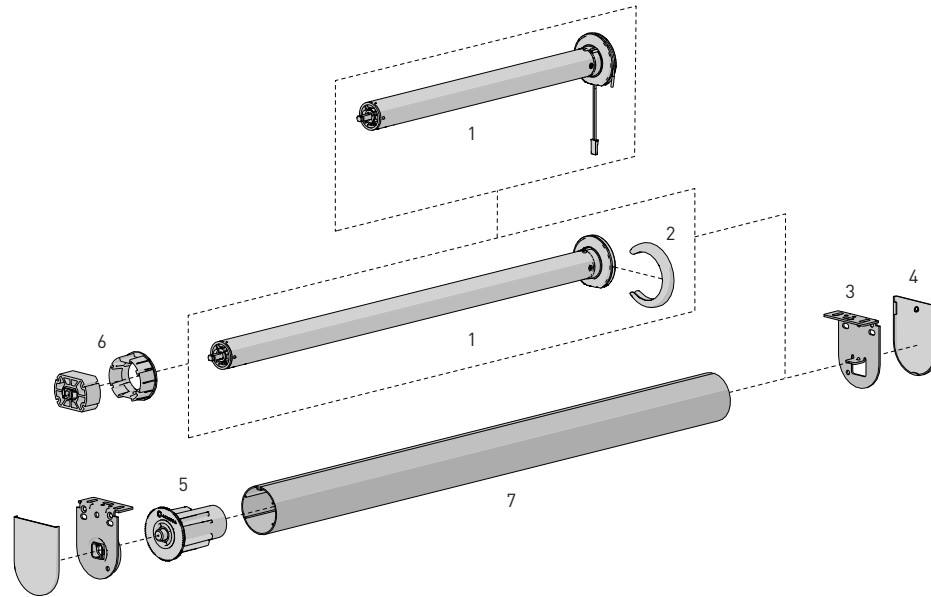
- Thinner 5V Motor Head
- Motor cap to color match with brackets

PRODUCTION & ASSEMBLY FEATURES

- Greater flexibility with installation with extendable pin end
- Crown, drive and adaptors available to suit multiple tube sizes
- Smaller Motor end deduction

FUNCTIONAL BENEFITS

- 5V Micro USB Charging
- Antennae Wire Retention Feature
- Levelling control
- Simple limit setting and adjustment
- Favorite position
- 3 operational speed settings
- 2-WAY RF communication
- ARC protocol for simple programming



SYSTEM INDEX

- Automate Motor | 25mm
 MT01-1225-069004 - DCRF 1.1Nm 12V
 1 MT01-1325-069032 - Li-ion 0.7Nm 20rpm 5V ZERO
 MT01-1325-069033 - Li-ion 1.1Nm 20rpm 5V ZERO

- Motor Cap
 MT03-0502-027001 - Chrome - 5V ZERO ONLY
 MT03-0502-034001 - Satin Nickel - 5V ZERO ONLY
 2 MT03-0502-043001 - Brass - 5V ZERO ONLY
 MT03-0502-059001 - Black - 5V ZERO ONLY
 MT03-0502-077001 - White - 5V ZERO ONLY
 MT03-0502-079001 - Antique Bronze 5V ZERO ONLY
 MT03-0502-091001 - Gun Metal - 5V ZERO ONLY

- Brackets
 3 RB09-0352-xxx0XX - Li-ion ZERO Brackets
 RB40-9355-xxx0XX - DCRF Brackets

- Bracket Covers
 4 RB08-4151-xxx0XX
 RB08-4152-xxx0XX

- Pin End
 5 RB09-0245-xxx001

- Crown & Drive Set | 25mm
 6 MT03-0103-069004

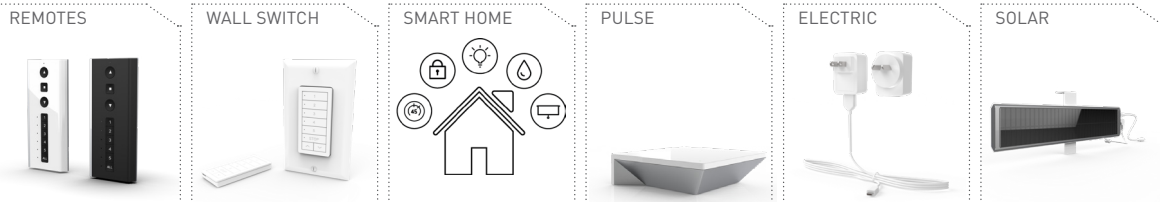
- S45 T-Spline Aluminum Tubes
 7 RB93-X443-000490 - Light
 RB93-X444-000490 - Standard
 RB93-X449-000490 - Heavy Duty

= Size
 xxx = Color
 X = catalogue options

COLOUR RANGE



CONTROL OPTIONS



CHARGERS



OPTIONS

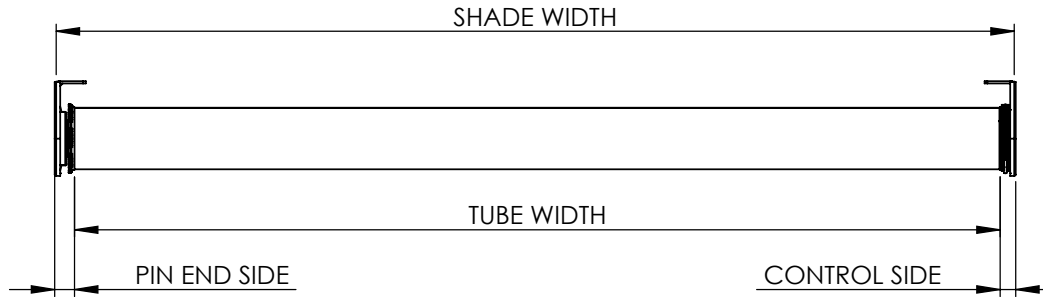


SYSTEM UPGRADES

- CF90 CASSETTE
- CF90 EDGE
- LINK SYSTEM

SPECIFICATIONS

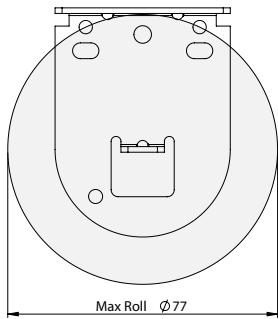
DEDUCTION CHART



MOTOR	MINIMUM SHADE WIDTH
MT01-1225-069004	17" [432mm]
MT01-1325-069032	22-7/16" [570mm]
MT01-1325-069033	25-1/4" [642mm]

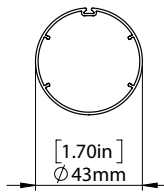
MOTOR	BRACKETS	LIGHT GAP		TUBE DEDUCTION
		CONTROL END	PIN END	
MT01-1225-069004 MT01-1325-069032 MT01-1325-069033	With Covers	1/2" [13mm]	9/16" [14mm]	1-1/16" [27mm]
	No Covers	1/2" [12mm]	1/2" [13mm]	1" [25mm]
+ Motor Cap	With Covers	9/16" [14mm]	9/16" [14mm]	1-1/8" [28mm]
	No Covers	1/2" [12mm]	1/2" [13mm]	1" [25mm]

MAX ROLL



BRACKET	MAX ROLL SIZE
RB09-0352-xxx040	3.03" [77mm]
RB09-0352-xxx050	4.13" [105mm]

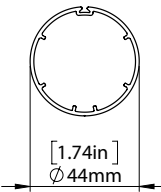
TUBE SPECS.



S45 Light Tube

Code RB93-0443-000490
w. tape RB93-6443-000490

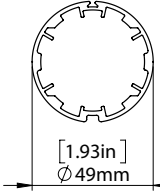
Length 16' [4.88m]



S45 STD Tube

Code RB93-0444-000490
w. tape RB93-6444-000490

Length 16' [4.88m]



S45 HD Tube

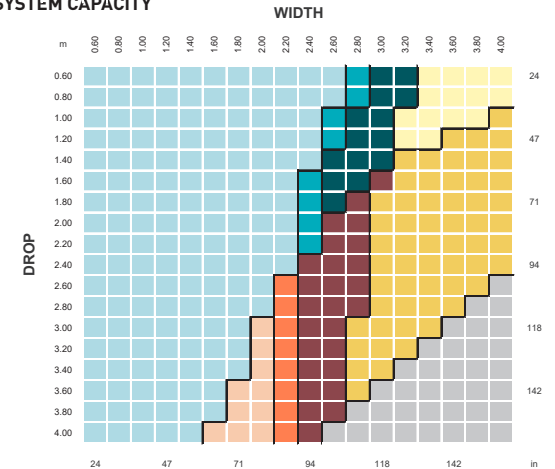
Code RB93-0449-000490
w. tape RB93-6449-000490

Length 16' [4.88m]

MAX LIFTING CAPACITY				MAX DROP*
MOTORS	S45 LT	S45 STD	S45 HD	S45
0.7Nm	7.3lbs [3.3kg]	7.1lbs [3.2kg]	6.4lbs [2.9kg]	13.1' [4m]
1.1Nm	11.4lbs [5.2kg]	11.2lbs [5.1kg]	10.1lbs [4.6kg]	13.1' [4m]

*Exceeding these value may cause fabric tracking issues

SYSTEM CAPACITY



Control	S45 Tube	PARAMETERS
0.7Nm 1.1Nm	LT STD HD	FABRIC DENSITY: 420gsm
0.7Nm 1.1Nm	STD HD	FABRIC THICKNESS: 0.6mm
0.7Nm 1.1Nm	HD	WEIGHT BAR: D30 Medium Bottom Rail
1.1Nm	LT STD HD	CONTROL: 0.7Nm & 1.1Nm MOTOR
1.1Nm	STD HD	
1.1Nm	HD	
0.7Nm 1.1Nm	Linked	
1.1Nm	Linked	