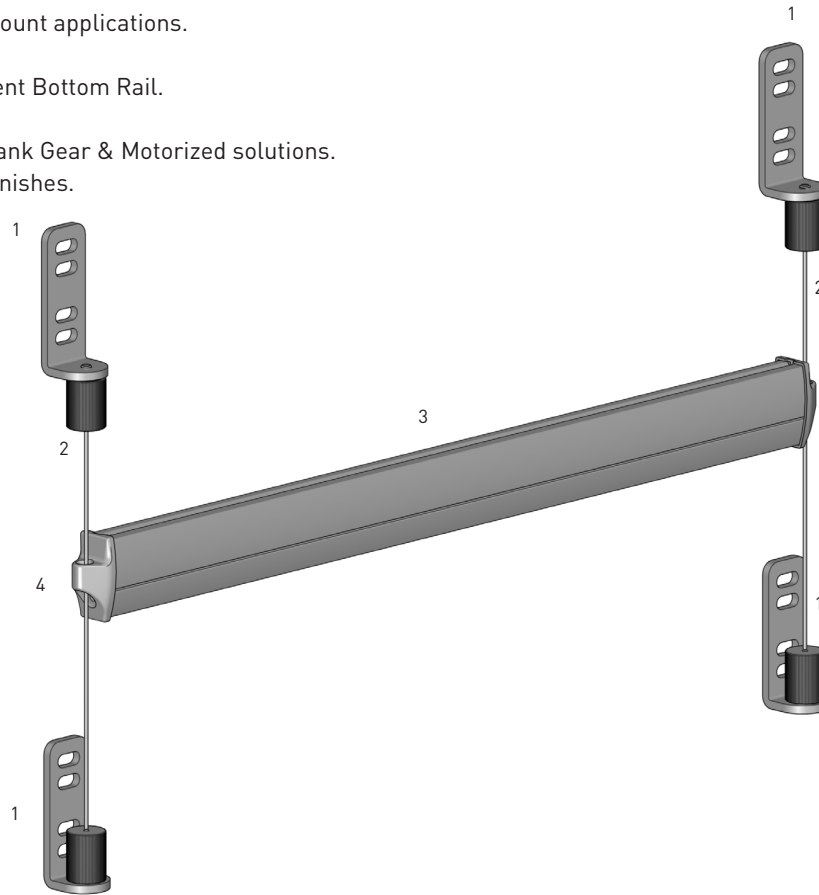


INTERNAL WIRE GUIDE SYSTEM

Release Acmeda's Internal Wire Guide System provides a functional, secure guide for the S45 Roller Shade series, aiding and controlling a shade from unwanted movement.

FEATURES/BENEFITS

- Tensioners available to suit Ceiling or Wall mount applications.
- Adjustable wire barrel attachment.
- Wire guide end caps compatible with D30 Silent Bottom Rail.
- 1.2mm stainless steel tensioning cable.
- Compatible with S45 series; Chainwinder, Crank Gear & Motorized solutions.
- Available in Zinc Plated and Stainless Steel finishes.
- Crimping & wire cutting tools available.



NOTE:

With constant pressure applied on the bottom rail end caps due to wind or force, we recommend the end caps be fixed with a screw into the bottomrail.

SYSTEM OPTIONS

TENSION WIRE ADJUST

FACE/WALL FIX



SYSTEM INDEX

- 1 Base 50 Tension Wire Stopp + Adjstr
RB91-3120-xxx000 · Top/Ceiling Fix
RB91-3121-xxx000 · Face/Wall Fix
- 2 Wire Guide Tensioning Cable - 1.2mm
RB91-3602-010012
- 3 D30 Bottom Rail
RB91-1232-xxx490 - Silent
- 4 D30 Bottom Rail WIRE GUIDE End Cap
RB91-2231-xxx002

xxx= color

COLOR RANGE



CONTROL OPTIONS

CHAIN CONTROL



CRANK GEAR

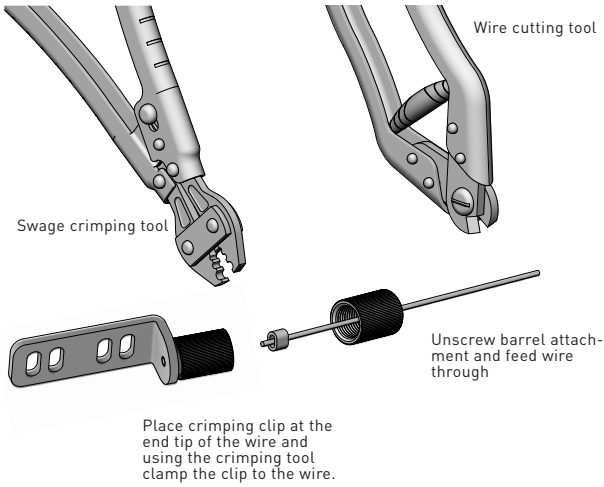


MOTORIZED

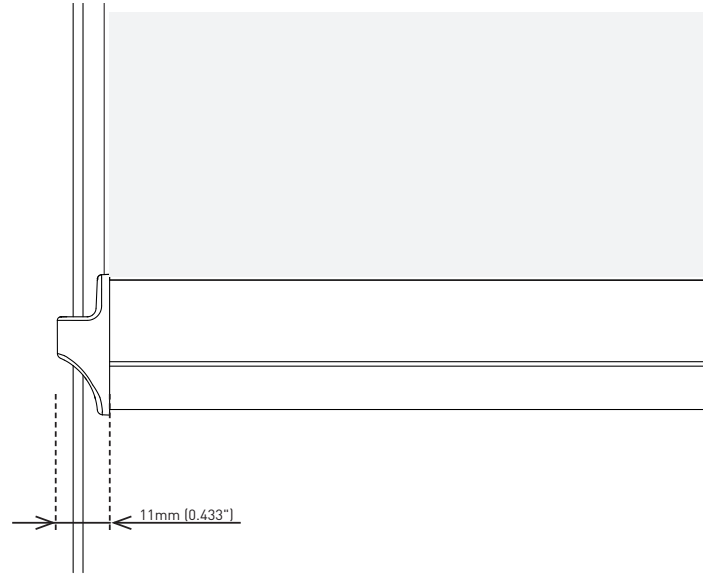


SPECIFICATIONS

ASSEMBLY



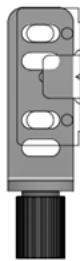
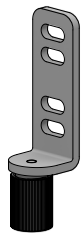
DEDUCTIONS



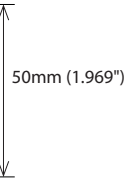
INSTALLATION OPTIONS

FACE/WALL FIX BRACKET

BASE 40

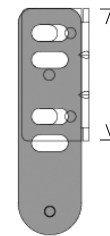
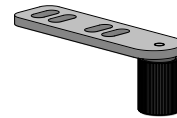


BASE 50



TOP/CEILING FIX BRACKET

BASE 40



BASE 50

