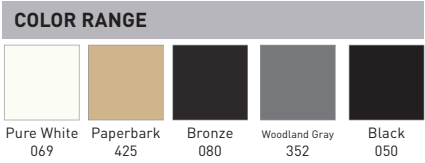
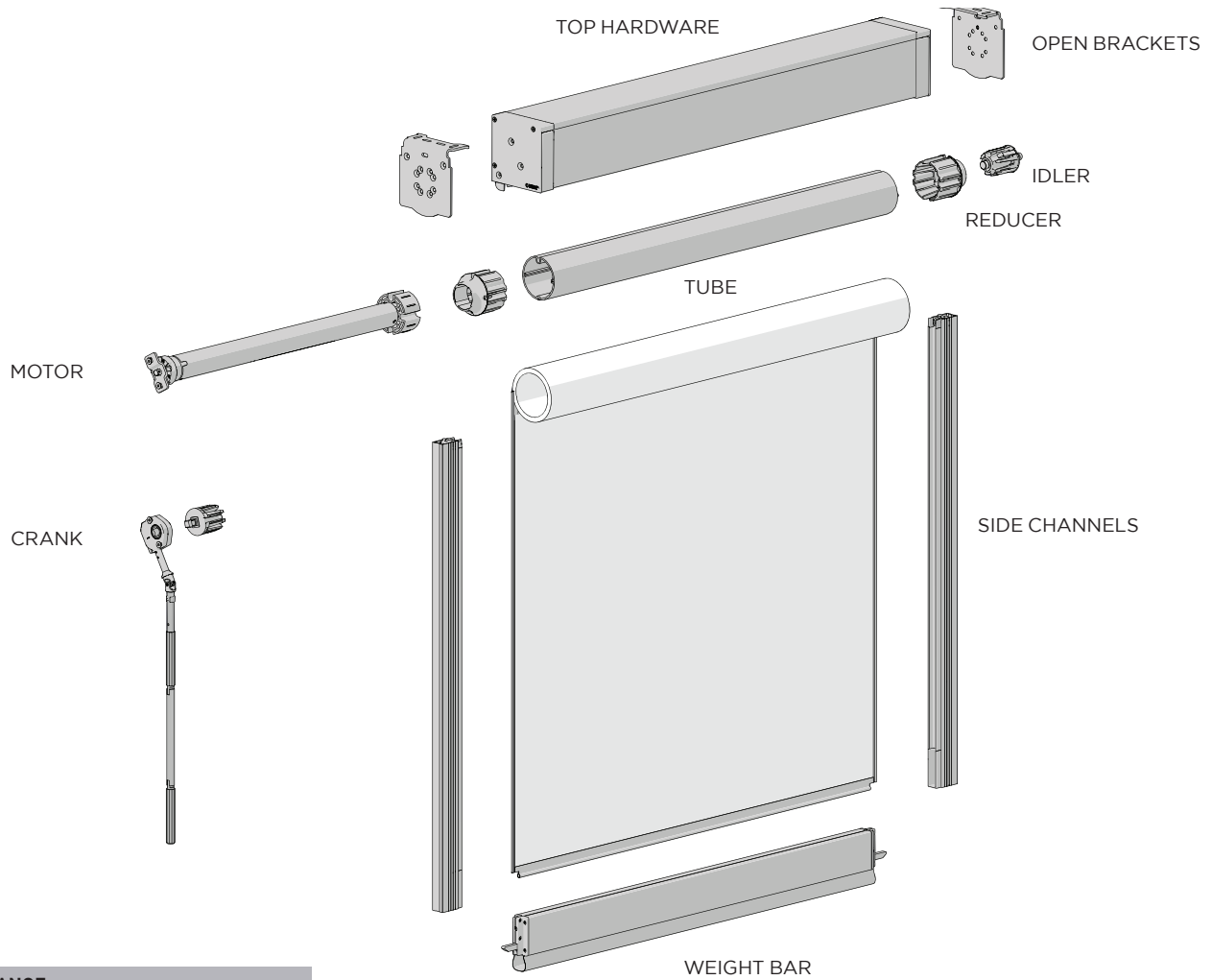
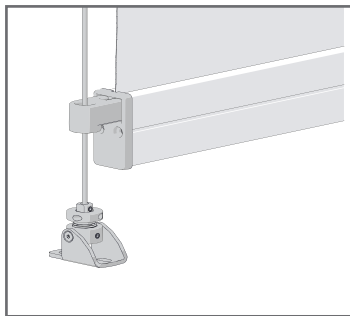


# OUTDOOR SHADES

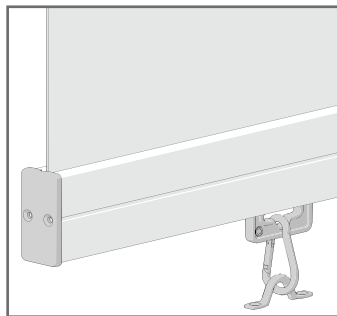
<b>SECTION 1</b>	<b>CORE HARDWARE</b>	
	Box Cassettes	96
	Open Brackets	98
	Controls	99
	Tubes	100
	Weight Bars	104
<b>SECTION 2</b>	<b>SIDE GUIDE OPTIONS</b>	
	Zipscreen	106
	Pivot Arm	107
	Wire Guide	107



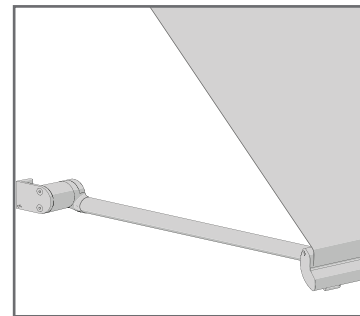
SYSTEM OPTIONS



WIRE GUIDE



STRAIGHT DROP



PIVOT ARM

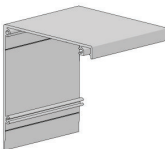
System	Top Hardware			Tubes				Controls		W.Bars		
	Box 120	Box 190	Open	78mm	110mm	130mm	160mm	Crank	Motor	F56	F72	Pivot
Zipscreen	✓	✓	✓	✓	✓	✓		✓	✓	✓	✓	
Wire Guide	✓	✓	✓	✓	✓	✓	✓	✓	✓	✓	✓	
Straight Drop	✓	✓	✓	✓	✓	✓		✓	✓	✓	✓	
Pivot Arm	✓		✓	✓				✓	✓			✓

**CASSETTE** BOX 120

**BOX 120 BACK**

Colors include protective film | 19ft (5.8m) piece

TYPE	Mill (000)	Colors - refer below
CODE	RE01-0101-000580	RE01-0101-xxx580-PF
PACK	1	1

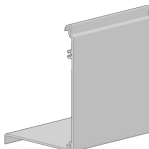


COLOR. Refer to color range on system overview page  
 USE WITH. Box 120 Covers & Box 120 End Plate Set

**BOX 120 FULL COVER**

Colors include protective film | 19ft (5.8m) Piece

TYPE	Mill (000)	Colors - refer below
CODE	RE01-0102-000580	RE01-0102-xxx580-PF
PACK	2	2

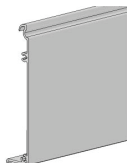


COLOR. Refer to color range on system overview page  
 USE WITH. Box 120 Back, Box 120 End Plate Set

**BOX 120 FASCIA COVER**

Colors include protective film | 19ft (5.8m) piece

TYPE	Mill (000)	Colors - refer below
CODE	RE01-0103-000580	RE01-0103-xxx580-PF
PACK	4	4

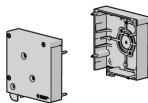


COLOR. Refer to color range on system overview page  
 USE WITH. Box 120 Back, Box 120 End Plate Set

**BOX 120 END PLATE SET**

LH & RH

TYPE	Mill (000)	Colors - refer below
CODE	RE01-1101-000120	RE01-1101-xxx120
PACK	2	2



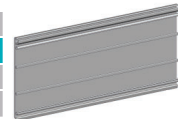
COLOR. Refer to color range on system overview page  
 USE WITH. Box 120 Back, Box 120 Full Cover, Box 120 Fascia

**CASSETTE** BOX 190

**BOX 190 UNIVERSAL EXTRUSION**

Colors include protective film | 22.9ft (17m)

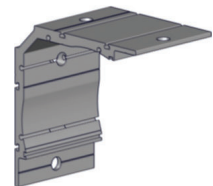
TYPE	Mill (000)	Colors - refer below
CODE	RE01-0106-000700	RE01-0106-xxx700-PF
PACK	1	1



COLOR. Mill (000), Black (050), Pure White (069)  
 USE WITH. Box 190 Front Cover, Box 190 Two-Side End Plate Set

**BOX 190 - UNIV. BRACKET EXTRUSION X4" (100MM) ANOD**

CODE	RE01-1105-020100
PACK	2



COLOR. Anodized (020)  
 USE WITH. Box 190 Universal Extrusion

**BOX 190 - Front Cover x 22.9 ft (7m) length Mill**

Colors include protective film | 22.9ft (17m)

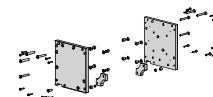
TYPE	Mill (000)	Colors - refer below
CODE	RE01-0107-000700	RE01-0107-xxx700-PF
PACK	1	1



COLOR. Mill (000), Black (050), Pure White (069)  
 USE WITH. Box 190 Universal Extrusion, Box 190 Two-Side End Plate Set

**BOX 190 TWO-SIDE END PLATE SET**

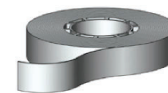
TYPE	Mill (000)	Colors - refer below
CODE	RE01-1105-000000	RE01-1105-xxx001
PACK	1	1



COLOR. Mill (000), Black (050), Pure White (069)  
 USE WITH. Box 190 Universal Extrusion & Bracket, Extreme Bracket adapters, Wire Guide adapter plate

**FOAM TAPE**

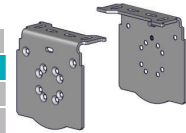
TYPE	0.063" x 0.354"
CODE	SB91-0516-050009
PACK	45



COLOR. Black (050)  
 USE WITH. Box 190 Universal Extrusion, Box 190 Front Cover

**EXTERNAL OPEN BRACKETS | SQUARE | 78MM**

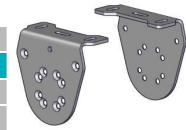
TYPE	Stainless Steel (012)	Colors - refer below
CODE	RE01-3031-012000	RE01-3030-xxx000
PACK	2	2



COLOR. Refer to color range on system overview page - Silver Zinc Plated (025) also available

**EXTERNAL OPEN BRACKETS | ROUND | 78MM**

TYPE	Stainless Steel	Color - refer below
CODE	RE01-3021-012000	RE01-3020-xxx000
PACK	2	2

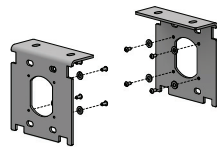


COLOR. Refer to color range on system overview page - Silver Zinc Plated (025) also available

**ZIPSCREEN EXTREME | BRACKET KIT**

Universal + Screws

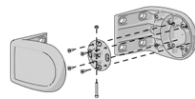
TYPE	Polished SS
CODE	SB03-1301-009190
PACK	1



COLOR. Polished Stainless Steel (009)  
USE WITH. Extreme Square Bracket Plates

**EXTREME OUTSIDE/WALL MOUNT BRACKET SET | S100 & adapter**

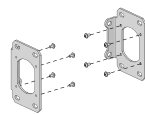
CODE	RB80-1201-xxx109
PACK	1



COLOR. Pure White (069), Black (050)  
USE WITH. Zamak Adapter, Extreme Bearing Idler

**EXTREME RECESS BRACKET KIT | MOTOR**

CODE	RB80-0478-069100
PACK	1



COLOR. Pure White (069)  
USE WITH. Extreme Bracket Adapter Kit

**CRANK OPERATION GEAR - RATIO 5:1**

with fixing screws

TYPE	Mill (000)	Color
CODE	RE01-0513-000003	RE01-0513-050003
PACK	5	5



COLOR. Mill (000), Black (050)

USE WITH. Crank Housing, Box 120 End Plate Set, Open Blind Brackets

**CRANK OPERATION GEAR- RATIO 8:1**

with fixing screws

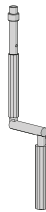
TYPE	Mill	Color
CODE	RE01-0517-000003	RE01-0517-050003
PACK	5	5



COLOR. Mill (000), Black (050)

USE WITH. Crank Housing, Box 120 End Plates, Open Blind Brackets

**GEAR/CRANK OPERATION CONTROL ARM**



SIZE	3.2ft (100cm)	4.9ft (150cm)	6.5ft (200cm)
CODE	RB05-9101-340100	RB05-9101-340150	RB05-9101-340200
PACK	5	5	5

COLOR. Gray (340)

USE WITH. Crank Operation Gear, Gear/Crank Operation Arm Support

**GEAR/CRANK OPERATION ARM SUPPORT**

CODE	RB05-9102-xxx000
PACK	5

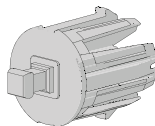


COLOR. Pure White (069), Gray (340)

USE WITH. Gear/Crank Operation Control Arm

**CRANK ADAPTOR | 45MM**

CODE	RE01-0502-050045
PACK	5

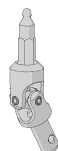


COLOR. Black (050)

USE WITH. Crank Operation Gear, 45mm reducer, 45mm to 78mm Crown

**RE01 Gear | Universal Joint**

CODE	RE01-0510-020000
PACK	10

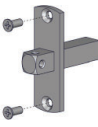


COLOR. Anodized (020)

USE WITH. Crank Operation Gear, Crank Operation Control Arm

**AUTOMATE VEUE 45MM SLIM MOTOR 10MM SQ. SHAFT**

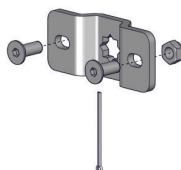
TYPE	45mm
CODE	RE01-0603-025000
PACK	1



COLOR. Silver Zinc Plated [025]  
USE WITH. Automate Bracket Adapter

**AUTOMATE VEUE 45MM MOTOR BRACKET ADAPTER**  
+ screws

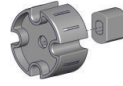
TYPE	45mm
CODE	RE01-0601-025000
PACK	5



COLOR. Silver Zinc Plated [025]  
USE WITH. Automate 10mm Sq. Shaft

**AUTOMATE | 78MM DRIVE WHEEL | IMPACT DETECT**  
\*\*WHILE SUPPLIES LAST\*\*

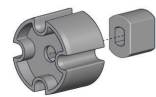
TYPE	78mm
CODE	RE01-0680-050518
PACK	5



COLOR. Black [050]  
USE WITH. Automate FT Motor, 78mm Tube

**AUTOMATE | 63MM DRIVE WHEEL | IMPACT DETECT**


TYPE	63mm
CODE	RE01-0666-050518
PACK	5



COLOR. Black [050]  
USE WITH. Automate FT Motor, 63mm Tube

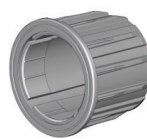
**MOTOR DRIVE CLIP FOR 35/45MM MOTORS**

TYPE	35/45mm
CODE	MTCLIP-35-45
PACK	100



**AUTOMATE | CROWN WHEEL - 63MM UNIVERSAL**


TYPE	63 mm
CODE	RE01-0663-050518
PACK	5



COLOR. Black [050]  
USE WITH. Automate FT Motor, 63mm Tube

**ARC FT SLIM MOTOR [045/15NM/32RPM]**

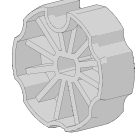
TYPE	45mm/15Nm/32r   Quiet
CODE	MT01-1145-069003
PACK	1



COLOR. Pure White [069]  
USE WITH. 78mm Alu/Steel tubes, 78mm Automate Drive & Crown Wheel

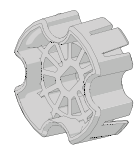
**AUTOMATE | 78MM DRIVE WHEEL | STD MOTOR**  
\*\*WHILE SUPPLIES LAST\*\*

TYPE	78mm
CODE	RE01-0679-050508
PACK	5




**AUTOMATE | 78MM DRIVE SINGLE PIECE (NEW)**

CODE	MT03-0106-050006
PACK	5



COLOR. Black [050]  
USE WITH. Automate FT Motor, 78mm Aluminum Tube

**AUTOMATE REMOTES**

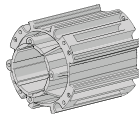


TYPE	Push 15	Push 5	1 Channel
CODE	MT02-0101-067008	MT02-0101-067004	MTRF-REM-1C
PACK	1	1	1
TYPE	15 Channel		
CODE	MTRF-REM-15NL		
PACK	1		

COLOR. White [067], Black [050]

**EXTREME CROWN WHEEL | S100**

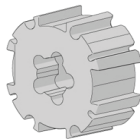
CODE	RB80-0701-073100
PACK	1



COLOR. Gray Cloud (073)  
USE WITH. AX Motors, Aluminum Tube S100-100STD & 130HD

**EXTREME DRIVE WHEEL | S100**

CODE	RB80-0301-073100
PACK	1



COLOR. Gray Cloud (073)  
USE WITH. Drive Wheel Adaptor, Aluminum Tube S100-100STD & 130HD

**AUTOMATE | 50NM MOTOR DRIVE ADAPTOR KIT**

CODE	MT03-0198-025008
PACK	1



COLOR. Silver Zinc Plated (025)  
USE WITH. AX Motor, Extreme Drive Wheel

**AUTOMATE | AX30 ARC MOTOR [Ø45/110V/12RPM] LC**

CODE	MT01-1145-069018
PACK	1



COLOR. Pure White (069)  
USE WITH. Extreme Crown & Drive, Drive Wheel Adaptor

**AX50 ARC MOTOR [Ø45/110V/13RPM] 20' CORD PLUG**

CODE	MT01-1145-069017
PACK	1

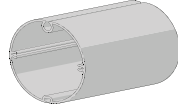


COLOR. Pure White (069)  
USE WITH. Extreme Crown & Drive, Drive Wheel Adaptor

**TUBES** 78MM

**EXT**

**78MM ALUMINUM TUBE W/ SCREW FEATURES**  
19ft (5.8m) Piece

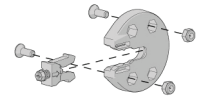


TYPE	STD-5.8m	HD-5.8m
PRICE		
CODE	RE01-0377-000580	RE01-0380-000580
PACK	2	2

COLOR. Mill (000)  
USE WITH. 78/45mm Reducer, 78/45mm Crown, #6 Zip,

**IDLER ADAPTER MKII | RETAINER CLIP + SCREW**

CODE	RE01-0214-050000
PACK	5

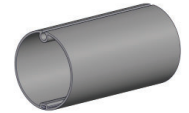


COLOR. Black (050)  
USE WITH. Idler, Standard Idler, Box 120 End Plate, Open Blind Brackets

**ALUMINUM STD TUBE 78MM**

19ft (5.8m) Piece **\*\*WHILE SUPPLIES LAST\*\***

CODE	RE01-0378-000580
PACK	2

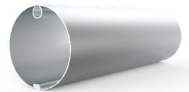


COLOR. Mill (000)  
USE WITH. Zipscreen Reducer

**STEEL TUBE 78MM**

22.9ft (7m) Piece

CODE	AW92-0901-000700
PACK	1

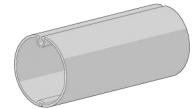


COLOR. Mill (000)  
USE WITH. Zipscreen Reducer

**ALUMINUM HD TUBE 78MM**

22.9ft (7m) Piece **\*\*WHILE SUPPLIES LAST\*\***

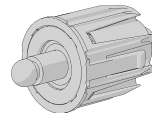
CODE	RE01-0379-000700
PACK	2



COLOR. Mill (000)  
USE WITH. Zipscreen Reducer

**BEARING IDLER | 45MM**

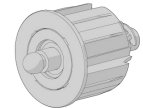
CODE	RE01-0213-050045
PACK	10



COLOR. Black (050)  
USE WITH. 45mm Reducer, 45mm Crown

**BEARING IDLER | 63MM**

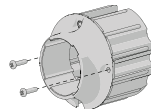
CODE	RE01-0203-050063
PACK	10



COLOR. Black (050)  
USE WITH. 63mm Tube, Idler Bracket Adapter

**ZIPSCREEN REDUCER 78 | 45MM W/ SCREW**

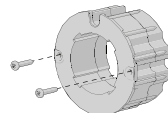
CODE	RE20-0311-050178
PACK	8



COLOR. Black (050) only  
USE WITH. 78mm tube, 45mm Bearing Idler, 45mm Crank Adaptor, 45mm Motors

**AUTOMATE | 78MM CROWN**

CODE	MT03-0106-050005
PACK	5

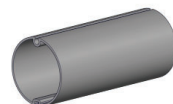


COLOR. Black (050)  
USE WITH. 78mm tube, 45mm Bearing Idler, 45mm Crank Adaptor, 45mm Motors

**ALUMINUM TUBE 63MM**

19ft (5.8m) Piece

	\$111.40 EA
CODE	RE01-0363-000580
PACK	4



COLOR. Mill (000)  
USE WITH. Bearing Idler, Idler Housing, Crank Housing 63mm, Automate Motor

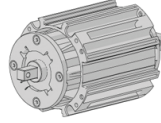


**TUBES** S100

**TUBES/WEIGHT BAR** **FABRIC ATTACHMENT**

**EXTREME BEARING IDLER | S100**

CODE	RB80-0202-073100
PACK	1



COLOR. Gray Cloud (073)  
 USE WITH. Extreme Bracket Set or Plate, Aluminum Tube S100-100STD & 130HD

**ALUMINUM TUBE | S100 - 110 STANDARD**  
 O.D 4.33" x 22.9ft (110mm x 7m) piece / No Tape

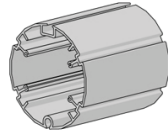
CODE	RB93-0110-000600
PACK	2



COLOR. Mill (000)  
 USE WITH. Extreme Crown & Drive, Reducer Set, Tail Spline

**ALUMINUM TUBE | S100 -130 HEAVY DUTY**  
 O.D 5.12" x 22.9ft (130mm x 7m)

TYPE	22.9ft (7m)
CODE	RB93-0130-000700
PACK	1



COLOR. Mill (000)  
 USE WITH. Extreme Crown & Drive, Reducer Set, Tail Spline

**ZIPSCREEN EXTREME REDUCER SET**  
 2 piece set + screws

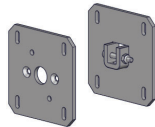
CODE	RB80-0501-050110	RB80-0501-050130
PACK	1	1



COLOR. Black (050)  
 USE WITH. S100 Aluminum tube, S130 Aluminum tube

**EXTREME SQUARE MOTOR BRACKET PLATE | S100**  
 4.33" x 0.197" (110mm x 5mm) - Inside Mount

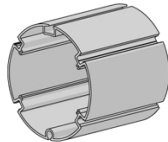
CODE	RB80-1503-xxx110
PACK	1



COLOR. Pure White (069), Black (050)  
 USE WITH. End Plates, Motor Adaptor

**ALUMINUM TUBE | S100 - 160 EXTRA HEAVY DUTY**  
 O.D. 6.3" x 22.9ft (160mm x 7m)

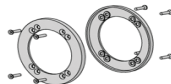
TYPE	22.9ft (7m)
CODE	RB93-0160-000700
PACK	1



COLOR. Mill (000)  
 USE WITH. S100 - 130 Tube, Tail Spline

**EXTREME TUBE END PLATE | S100**  
 2 Piece Set + screws

TYPE	110 Standard	130 Heavy Duty	160 Extra Heavy Duty
PRICE			
CODE	RB80-0601-073110	RB80-0601-073130	RB80-0601-073160
PACK	1	1	1



COLOR. Gray Cloud (073)  
 USE WITH. S100 Aluminum Tube- 110mm, 130mm & 160mm

**ZIP | NO.6 GAUGE**

Double Sided - 1 Roll = 656ft (200m)

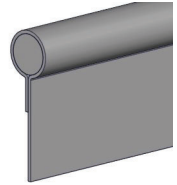
CODE	SH91-0135-050200
PACK	200



COLOR. Black (050)  
 USE WITH. Fabric, Zip Inner Rail

**7MM FABRIC SPLINE WITH 15MM TAIL**  
 328ft (100m) roll

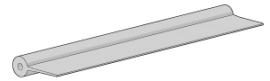
CODE	SB91-0409-050015
PACK	1



COLOR. Black (050)  
 USE WITH. F56 Weight Bar, F72 HD Weight Bar, 78mm tubes

**7.2MM SPLINE WITH 15MM TAIL**  
 328ft (100m) roll

CODE	SB91-0408-001015
PACK	1

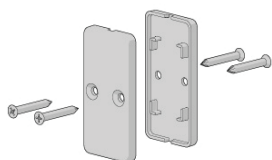


COLOR. Clear (001)  
 USE WITH. F56 Weight bar, 78mm Steel & Alu. Tube

**F56 WEIGHT BAR PLAIN END CAP**

CODE	RE15-0501-050000
PACK	5

COLOR. Black (050)  
USE WITH. F56 Weight Bar

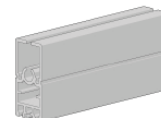


**F56 WEIGHT BAR**

Colors include protective film | 19ft (5.8m) Piece

SIZE	Mill (000)	Colors - refer below
CODE	RE15-0101-000580	RE15-0101-xxx580-PF
PACK	2	2

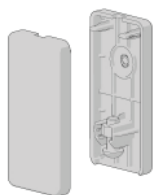
COLOR. Refer to color range on system overview page  
USE WITH. F56 Weight Bar Plain End Cap, 7.2mm Tail Spline



**F72 PLAIN END CAP SET + SCREWS**

CODE	RE15-0540-050000
PACK	5

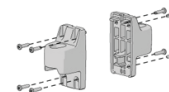
COLOR. Black (050)  
USE WITH. F72 HD Weight Bar



**F72 MULTI-BAR END CAPS | WIRE GUIDE + SCREWS**

CODE	RE15-0522-xxx000
PACK	5

COLOR. Black (050), Pure White (069)  
USE WITH. F72 HD Weight Bar



**WIRE GUIDE HEM BAR END CAPS**

Includes Screws

CODE	RE15-0601-xxx001
PACK	5

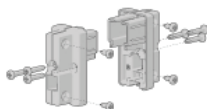
COLOR. Black (050), Pure White (069)  
USE WITH. F56 Weight Bar



**F56 LOCK END CAP SET**

CODE	RE20-0303-xxx002
PACK	10

COLOR. Black (050), Pure White (069)  
USE WITH. F56 Weight Bar, Ultra Lock V2



**F72 MULTI-BAR END CAP**

CODE	RE15-0512-050000
PACK	5

COLOR. Black (050)  
USE WITH. F72 HD Weight Bar, Ultra-Lock V2

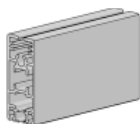


**F72 HD EXTERNAL WEIGHT BAR**

Colors include protective film | 19ft (5.8m) Piece

TYPE	Mill (000)	Colors - refer below
CODE	RE15-0112-000700	RE15-0112-xxx700-PF
PACK	1	1

COLOR. Refer to color range on system overview page  
USE WITH. F72 End Caps, Ultra Lock V2, Flat Ballast, 7mm Fabric Spline, 15mm PVC Spline

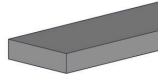


**FLAT BALLAST BAR**

0.79" x 0.20" x 9.8ft Length

CODE	SB91-1005-033300
PACK	10

COLOR. Galvanized (033)  
USE WITH. F56 Weight Bar



**25MM STRAIGHT DROP LOOP**

CODE	RE91-1102-050025
PACK	10

COLOR. Black (050)  
USE WITH. F56 weight bar

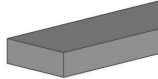


**FLAT BALLAST BAR - WRAPPED**

0.98" x 0.31" x 6.6ft Length

CODE	SB91-1018-050200
PACK	5

COLOR. Black (050)  
USE WITH. F72 HD Weight Bar



**STRAIGHT DROP PAD EYE SADDLE - 30MM**

CODE	RE91-1104-013030
PACK	10

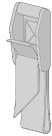
COLOR. Polished Stainless Steel (013)  
USE WITH. Straight Drop Spring Clip - 50mm



**25MM CAM BUCKLE & STRAP ASSEMBLY**

CODE	RE91-0100-025025
PACK	2

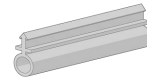
COLOR. Silver Zinc Plated (025)  
USE WITH. 25mm straight drop loop, 28mm footmans loop



**WEIGHT BAR BUBBLE SEAL PUSH FIT - 150M ROLL**

TYPE	429ft (150m)
CODE	SB91-0013-050150
PACK	150

COLOR. Black (050)  
USE WITH. F56 Weight Bar, F72 HD Weight Bar



**25MM FOOTMANS LOOP**

CODE	RE91-1101-013025
PACK	10

COLOR. Stainless Steel (013)  
USE WITH. 25mm strap down loop



**BUBBLE SEAL STRIP**

19ft (5.8m) piece

CODE	SB91-0001-050580
PACK	10

COLOR. Black (050)  
USE WITH. F56 Weight bar, Zipscreen Weight Bar Latch



**STRAIGHT DROP SPRING CLIP - 50MM**

CODE	RE91-1103-009050
PACK	10

COLOR. Stainless Steel (009)  
USE WITH. 25mm straight drop loop & pad eye saddle

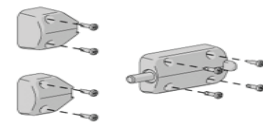


**ZIPSCREEN WEIGHT BAR LATCH**

+ Screws

CODE	SB07-2103-050001
PACK	10

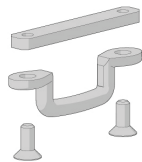
COLOR. Black (050)  
USE WITH. Weight Bar, U Mounting Rail



**F72 FOOTMANS LOOP KIT**

CODE	RE91-1111-013025
PACK	5

COLOR. Stainless Steel (013)  
USE WITH. F72 HD Weight Bar

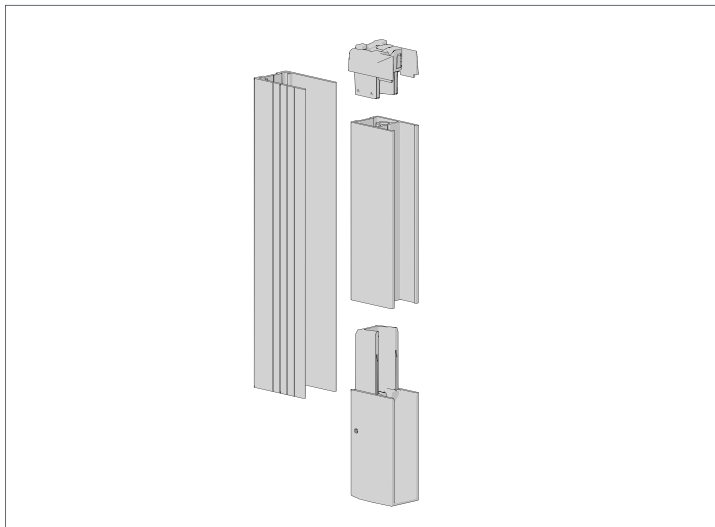


**16MM BUBBLE SEAL | F72 | 40 LM ROLLS**

CODE	SB91-0018-050040
PACK	40

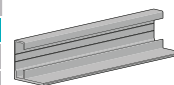
COLOR. Black (050)  
USE WITH. F72 HD Weight Bar





**ZIPSCREEN - L FIXING RAIL | BOX 190 | 5.5M**

TYPE	Mill (000)	Colors - refer below
CODE	SB04-0708-000550	SB04-0708-xxx550-PF
PACK	8	8



COLOR. Black (050), Pure White (069)  
 USE WITH. Box 190, Extreme Open Brackets

**ZIPSCREEN | U MOUNTING RAIL**

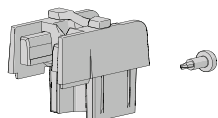


SIZE	18ft (5.5m)	18ft (5.5m) piece
TYPE	Mill (000)	Colors - refer below
CODE	SB04-0702-000550	SB04-0702-xxx550-PF
PACK	10	10

COLOR. Black (050), Pure White (069), Bronze (080)  
 USE WITH. Zip Inner Rail, L Fixing Rail, End Plate set

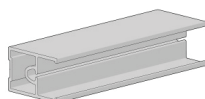
**ZIPSCREEN - FUNNEL W/ INTEGRATED TOP STOP + SCREW**

CODE	SB05-1412-050001
PACK	50



COLOR. Black (050)  
 USE WITH. Zip Inner Rail

**ZIPSCREEN | ZIP INNER RAIL**



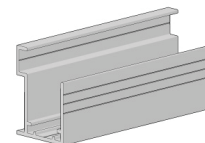
SIZE	18ft (5.5m) piece	18ft (5.5m) piece
TYPE	Mill (000)	Colors - refer below
CODE	SB04-0701-000550	SB04-0701-xxx550
PACK	10	10

COLOR. Refer to color range on system overview page  
 USE WITH. U Mounting Rail, Inner Rail Funnel & Stop Set, Inner Rail Bottom Cap Set

**ZIPSCREEN | FACE FIX - U MOUNTING RAIL**

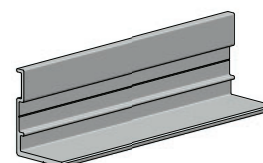
18ft (5.5m) Meter length

CODE	SB04-0705-000550
PACK	8



COLOR. Mill (000)  
 USE WITH. Zip Inner Rail, End Plate set

**ZIPSCREEN | L FIXING RAIL**



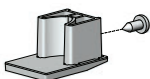
SIZE	8.2ft (2.5m) piece	18ft (5.5m) piece	18ft (5.5m) piece
TYPE	Mill (000)	Mill (000)	Color - refer below
CODE	SB04-0703-000250	SB04-0703-000550	SB04-0703-xxx550
PACK	10	10	10

COLOR. Refer to color range on system overview page  
 USE WITH. U Mounting Rail

**ZIPSCREEN | ZIP INNER RAIL BOTTOM CAP SET**

+ Screw

CODE	SB05-1511-050001
PACK	10



COLOR. Black (050)  
 USE WITH. Zip Inner Rail

**ULTRA LOCK V2**

Kit Assembly (Pin & Latch only)

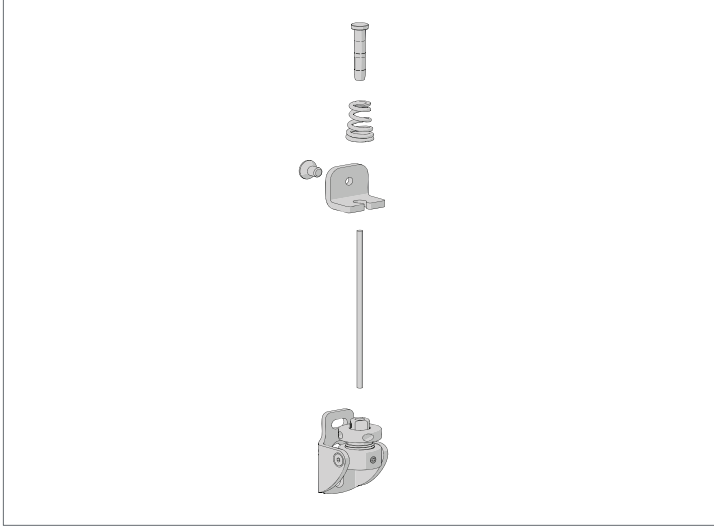
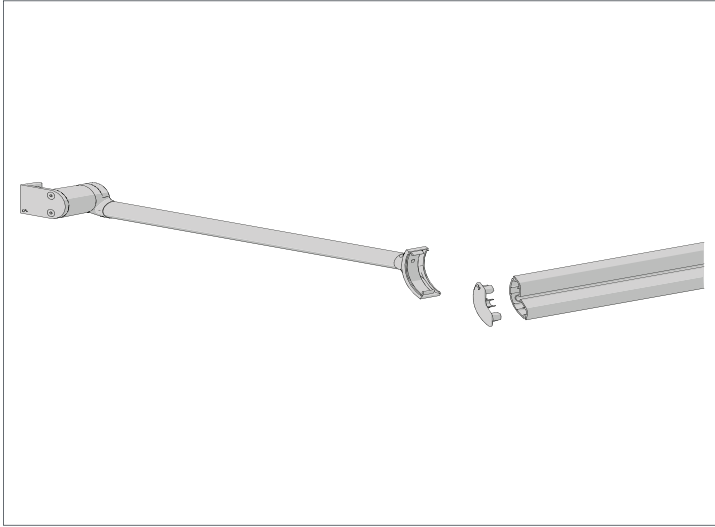
CODE	RE15-0422-050001
PACK	5



COLOR. Black (050)  
 USE WITH. Weight Bars, Inner Rail

**PIVOT ARM**

**WIRE GUIDE** 3.2MM **EXT**



**PIVOT ARM TERMINAL BAR**  
16.4ft (5m) Piece

CODE	RE29-0102-xxx500
PACK	1

COLOR. Pure White (069), Black (050)  
USE WITH. Pivot Arms and cover caps

**DOME HEAD TERMINAL**  
For 3.2mm Wire

CODE	RE24-1312-009002
PACK	20

COLOR. Polished Stainless Steel (009)  
USE WITH. 3.2mm Wire Tensioning Guide

**PIVOT ARMS**  
1 Set = 2 Arms

TYPE	5.25ft (1.6m)
CODE	AW05-0701-xxx160
PACK	1

COLOR. Black (050), Pure White (069)  
USE WITH. Pivot Arm Terminal Bar

**WIRE TENSIONING GUIDE - 3.2MM**  
Thread: 1 x 19 | 1 Roll = 164ft (50m)

CODE	RB91-3602-010032
PACK	50

COLOR. Stainless Steel (010)  
USE WITH. Dome Head Terminal

**PIVOT ARM COVER CAP FOR TERMINAL BAR**

CODE	AW05-0801-xxx000
PACK	1

COLOR. Pure White (069), Black (050)  
USE WITH. Pivot Arm Terminal Bar

**BOTTOM WIRE GUIDE SWIVEL BRACKET**  
Floor/Wall Mount

CODE	RE24-2205-009000
PACK	4

COLOR. Polished Stainless Steel (009)  
USE WITH. Swaged Dome Stud Terminal, 3.2mm Wire

**WIRE CABLE - TOP BRACKET + SCREW**

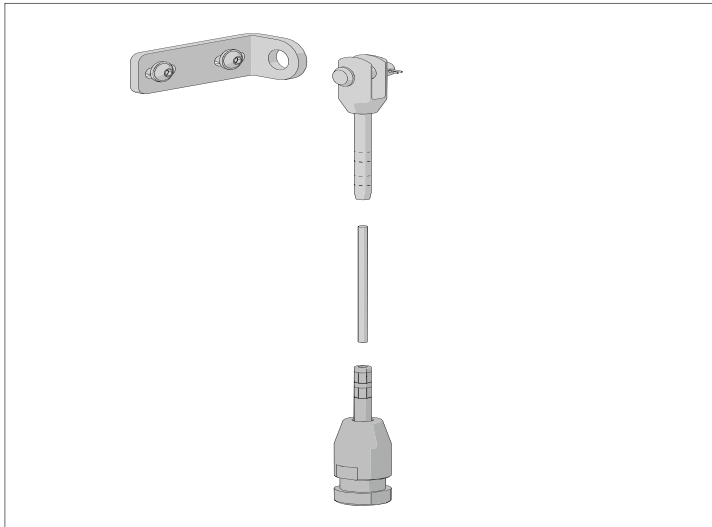
CODE	RE24-4002-010032
PACK	4

COLOR. Stainless Steel (010)  
USE WITH. Open Brackets

**SWAGED DOME STUD TERMINAL**  
13.7ft (4.2m) Wire

CODE	RE24-1312-009420
PACK	4

COLOR. Polished Stainless Steel (009)  
USE WITH. Wire Guide Top Saddle Terminal Kit w/ Spring

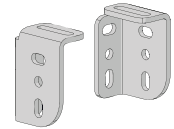


**WALL MOUNTING L BRACKET - LH AND RH SET**

3.54" x 1.5" (90mm x 38mm)

CODE	RE24-2301-009090
PACK	1

COLOR. Polished Stainless Steel (009)  
USE WITH. Threaded Stud Terminal



**THREADED STUD TERMINAL**

+ nut & washer

CODE	RE24-1401-009040
PACK	2

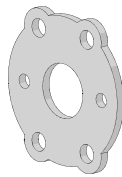
COLOR. Polished Stainless Steel (009)  
USE WITH. Swage Fork Terminal



**ZAMAK ADAPTER SPACER**

CODE	RB80-0411-025050
PACK	1

COLOR. Zinc Plated (025)  
USE WITH. Zamak Adapter



**TENSION SPRING**

14.5 I.D. x 23.5 O.D x 50mm

CODE	RE24-9101-009050
PACK	2

COLOR. Polished Stainless Steel (009)  
USE WITH. Threaded Stud Terminal

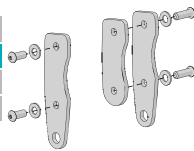


**MOTOR EXTREME WIRE GUIDE BRACKET ADAPTER KIT**

Outside / Wall Mount

TYPE	Zinc Plated	Colors - refer below
CODE	RB80-0476-025100	RB80-0476-xxx100
PACK	1	1

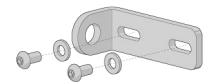
COLOR. Black (050), Pure White (069)  
USE WITH. Extreme Bracket Set - Outside/ Wall Mount



**BOX 190 WIRE GUIDE ADAPTOR PLATE WITH SCREWS**

CODE	RB80-0481-012000
PACK	1

COLOR. Stainless Steel (012)  
USE WITH. Box 190 end plates and fork terminal

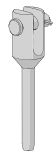


**SWAGE FORK TERMINAL**

0.16" (4mm) stainless steel wire

CODE	RE24-1314-009400
PACK	2

COLOR. Polished Stainless Steel (009)  
USE WITH. Extreme Bracket Set - Outside/Wall Mount, Wire Guide Cable



**WIRE GUIDE TENSIONING CABLE 4MM**

164ft (50m) Roll

CODE	RB91-3602-006040
PACK	50

COLOR. Stainless Steel (006)  
USE WITH. Flat Head Stud & Swage Fork Terminals, F72 HD Weight Bar End Cap



**TENSIONING BRACKET & FLAT HEAD STUD TERMINAL**

0.16" (4mm) stainless steel wire

CODE	RE24-2601-009040
PACK	2

COLOR. Polished Stainless Steel (009)  
USE WITH. 4mm Wire Guide Cable



OPTIONAL ACCESSORIES

EXT

**AUTOMATE | SOLAR WIND/ LIGHT SENSOR**

TYPE	SOLAR POWERED
CODE	MT02-0301-072001
PACK	1

COLOR. White [072]  
 USE WITH. AUTOMATE FT Motor

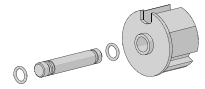


**IDLER HOUSING & PIN KIT**

63mm \*\*WHILE SUPPLIES LAST\*\*

CODE	RE01-0212-050063
PACK	5

COLOR. Black [050]  
 USE WITH. 63mm Tube, Zipscreen Reducer, Idler Bracket



**STAINLESS STEEL RIVET**

0.16" O.D [Grip Range 0.126" - 0.189"]

CODE	HD86-0332-010009
PACK	100

COLOR. Stainless Steel [010]  
 USE WITH. Zipscreen U Mounting Rail, Zip Inner Rail, L Fixing Rail

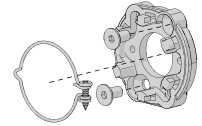


**UNIVERSAL ZAMAK ADAPTER**

with Lock Ring & screws

CODE	RB56-0762-014050
PACK	1

COLOR. Cast Silver [014]  
 USE WITH. Extreme Square Motor Bracket Plate, AX Motors



**SOMFY DRIVE WHEEL**

TYPE	63mm	78mm
CODE	RE01-0663-050003	RE01-0678-050003
PACK	5	5

COLOR. Black [050]  
 USE WITH. M50 Somfy Round Head Motor

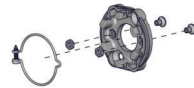


**UNIV ZAMAK ADAPTER & LOCK RING**

M6 x 10mm (open brackets)

TYPE	Universal
CODE	RB56-0763-014050
PACK	1

COLOR. Cast Silver [014]  
 USE WITH. Open Brackets

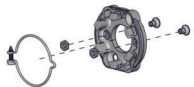


**UNIV ZAMAK ADAPTER & LOCK RING**

M6 X 12mm (boxed system)

TYPE	Universal
CODE	RB56-0764-014050
PACK	1

COLOR. Cast Silver [014]  
 USE WITH. Box 120 system

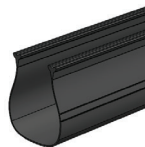


**ULTRA LOCK SEAL V3**

164ft (50m) Roll

CODE	SB91-0008-050050
PACK	50

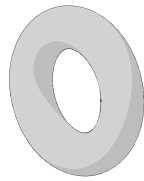
COLOR. Black [050]  
 USE WITH. Zipscreen Ultra-Lock V2, F56 Weight Bar, F72 HD Weight Bar



SPARE PARTS

BOX 120 END PLATE - O-RING, EPDM, METRIC, 6.0 ID X 3.0 CS

CODE	HD87-1060-050030
PACK	1,000



COLOR. Black (050)  
 USE WITH. BOX 120 End Plates (RE01-1101-xxx120)

BOX 120 END PLATE COVER

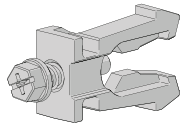
CODE	ME01-1101-xxx905
PACK	4



COLOR. Black (050), Pure White (069)  
 USE WITH. BOX 120 End Plates (RE01-1101-xxx120)

Idler Adapter MKII | Retainer Clip + Screw

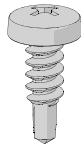
CODE	RE01-0214-050004
PACK	10



COLOR. Black (050)  
 USE WITH. Idler Adaptor Kit MKII (RE01-0214-050000)

SELF-DRILLING PAINTED SCREWS

CODE	HD82-1923-xxx013
PACK	500



COLOR. Black (050), White (069)