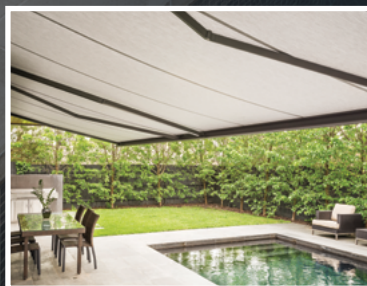
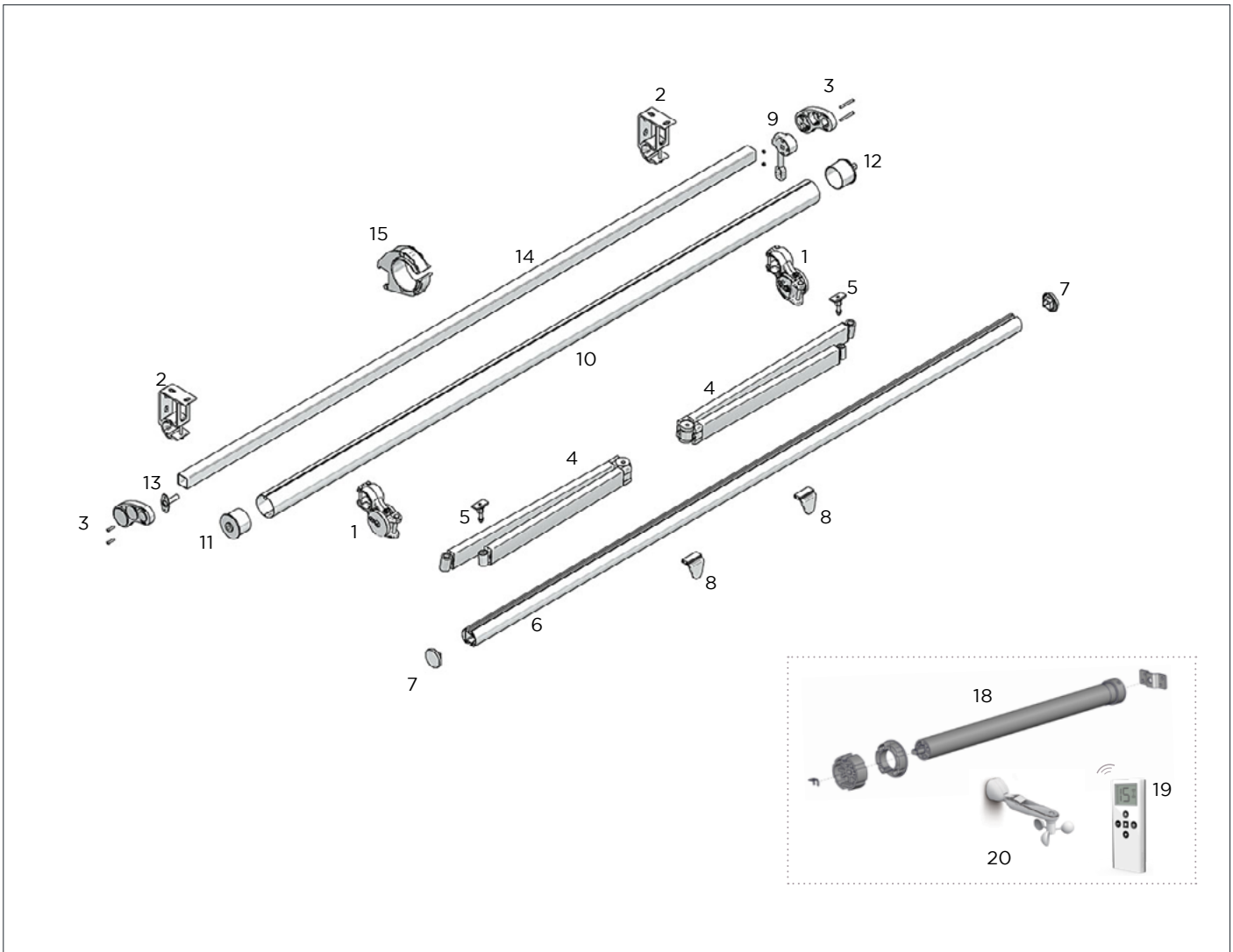


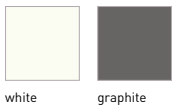
AWNINGS

SECTION 1	FOLDING ARM AWNINGS	
	Piuma	191
	Kumo	195
	Feng	199
	Awning Kits	203
SECTION 2	PRODUCT OPTIONS & ACCESSORIES	
SECTION 3	MARKETING SAMPLES & SPARE PARTS	





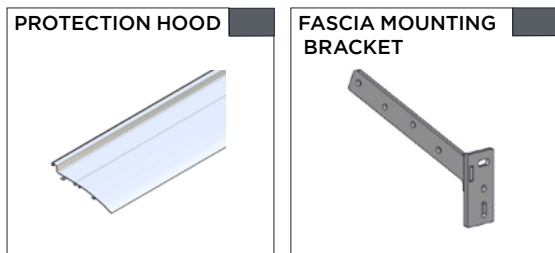
COLOUR RANGE



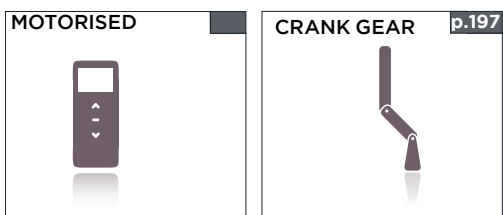
SPECIFICATION

Max Size: 7m x 3m

PRODUCT OPTIONS- See Page 274 for Pricing



CONTROL OPTIONS

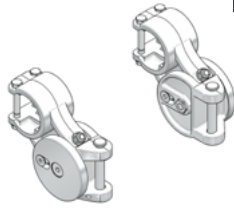


FOLDING ARM SUPPORT KIT

1

CODE.	AW07-0101-xxx000
PACK.	1 8 Pair

COLOUR. white 074, graphite 315
USE WITH. Square Bar, Folding Arm



FRONT TERMINAL BAR END COVERS

7

CODE.	AW92-0701-xxx001
PACK.	1 Pair

COLOUR. white 074, graphite 315
USE WITH. Front Terminal Bar

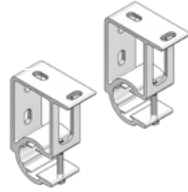


WALL/CEILING BRACKET

2

PRICE.	
CODE.	AW07-0201-xxx000
PACK.	1 10 Pairs

COLOUR. white 074, graphite 315
USE WITH. Square Bar



ARM STOPPERS

8

CODE.	AW91-2101-001000
PACK.	1 Set

COLOUR. Clear 001 only
USE WITH. Front Terminal Bar

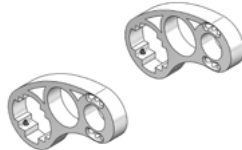


END BRACKETS

3

CODE.	AW07-0301-xxx000
PACK.	1 20 Pair

COLOUR. white 074, graphite 315
USE WITH. Square Bar, Pin Adaptor, Gear 11:1



GEAR 11:1

9

CODE.	AW92-0901-050000
PACK.	1 25 Pcs

COLOUR. black 050
USE WITH. End Brackets, Gear Drive End Cap

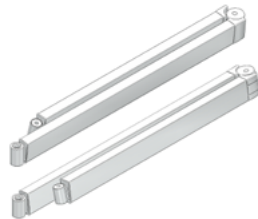


FOLDING ARM (FUSION)
2m, 2.5m, 3m Projection

4

SIZE.	2.0m	2.5m	3.0m
CODE.	AW07-0301-xxx200	AW07-0301-xxx250	AW07-0301-xxx300
PACK.	1 Pair	1 Pair	1 Pair

COLOUR. white 074, graphite 315
USE WITH. Arm /Terminal Bar Connectors, Folding Arm Support



PIUMA - GEAR SCREW KIT
M6 x 55

-

CODE.	AW92-0901-010008
PACK.	1 kit

COLOUR. stainless steel 010 only
USE WITH. Crank Gear 11:1



CRANK ROD

-

TYPE.	1.8m
CODE.	AW91-1001-xxx180
PACK.	1 10 Pcs

COLOUR. white 074, graphite 315
USE WITH. Gear 11:1

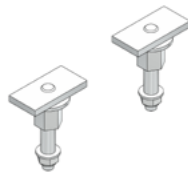


PIUMA ARM/TERMINAL BAR CONNECTORS

5

CODE.	AW07-0501-006000
PACK.	1 Pair

COLOUR. 316 Stainless Steel 006
USE WITH. Folding Arm, Terminal Bar

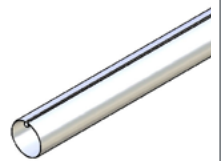


78MM AWNING TUBE
4.8m & 7m Lengths

10

SIZE.	4.8m	7.0m
CODE.	AW92-0901-000480	AW92-0901-000700
PACK.	28 Lgths	28 Lgths

COLOUR. mill finish only
USE WITH. Idler Housing, Gear Drive End Cap



FRONT TERMINAL BAR
5m & 7m Lengths

6

SIZE.	5.0m	7.0m
CODE.	AW91-0601-xxx500	AW91-0601-xxx700
PACK.	1 Lgth	1 Lgth

COLOUR. white 074, graphite 315
USE WITH. Arm /Terminal Bar Connectors

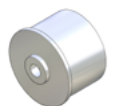


IDLER HOUSING
78mm Tube

11

CODE.	AW91-1401-338000
PACK.	1 Pc

COLOUR. silver grey 338 only
USE WITH. 78mm Tube, Pin Adaptor

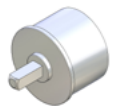


GEAR DRIVE END CAP
1/2" Square Shaft, 78mm Tube

12

CODE.	AW91-1101-338000
PACK.	1 Pc

COLOUR. silver grey 338 only
USE WITH. Gear 11:1, 78mm Tube



PIN ADAPTOR

13

CODE.	AW91-1201-006000
PACK.	1 100 Pcs



COLOUR. stainless steel 006
 USE WITH. End Brackets, Idler Housing, Motor Screw Kit

AUTOMATE | SUN & WIND SENSOR

20a

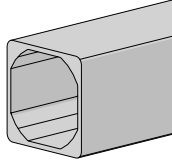
TYPE.	Solar	240V
CODE.	MT02-0301-072001	MT02-0301-072003
PACK.	1 10 Piece	1 10 Piece



COLOUR. vivid white 072
 USE WITH. Automate Awning Motors

ALUMINIUM SQUARE BAR - 40MM X 40MM
 5m & 7m Lengths

14



SIZE.	5.0m	7.0m
CODE.	AW92-2003-xxx500	AW92-2003-xxx700
PACK.	1 48 Lgths	1 48 Lgths

COLOUR. white 074, graphite 315
 USE WITH. Arm Support, Wall /Ceiling Bracket, Centre Balance Support

AUTOMATE | MOTION SENSOR

20b

CODE.	MT02-0301-xxx002
PACK.	1 25 Pcs



COLOUR. vivid white 072, black 050
 USE WITH. Automate Motors

UNIVERSAL ZAMAK ADAPTER WITH LOCK RING | THREADED
 Screws Sold Separately.

CODE.	RB56-0766-014050
PACK.	1 50 Pcs

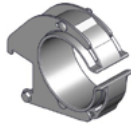


COLOUR. cast silver 014
 USE WITH. AX Motors, Hex M6x25 Screws

PIUMA - CENTRE BALANCE SUPPORT

15

CODE.	AW07-1901-xxx000
PACK.	1 Kit



COLOUR. white 074, graphite 315
 USE WITH. Square Bar, awnings over 5.4m wide

PIUMA - MOTOR / IDLER SCREW KIT
 M6 x 30

17

CODE.	AW92-0901-010005
PACK.	0 Kit



COLOUR. stainless steel 010
 USE WITH. Pin Adaptor, Motors using square shaft adaptor.

AUTOMATE AX ARC MOTOR

18

78mm Drive & Crown Wheel, Clip, Sq. Shaft Adaptor

TYPE.	AX30 [15RPM]	AX50 [12RPM]
CODE.	MT01-1145-069013	MT01-1145-069015
PACK.	1 10 Pcs	1 10 Pcs



COLOUR. pure white 069
 USE WITH. 78mm Awning Tube, End Brackets.

AUTOMATE REMOTES

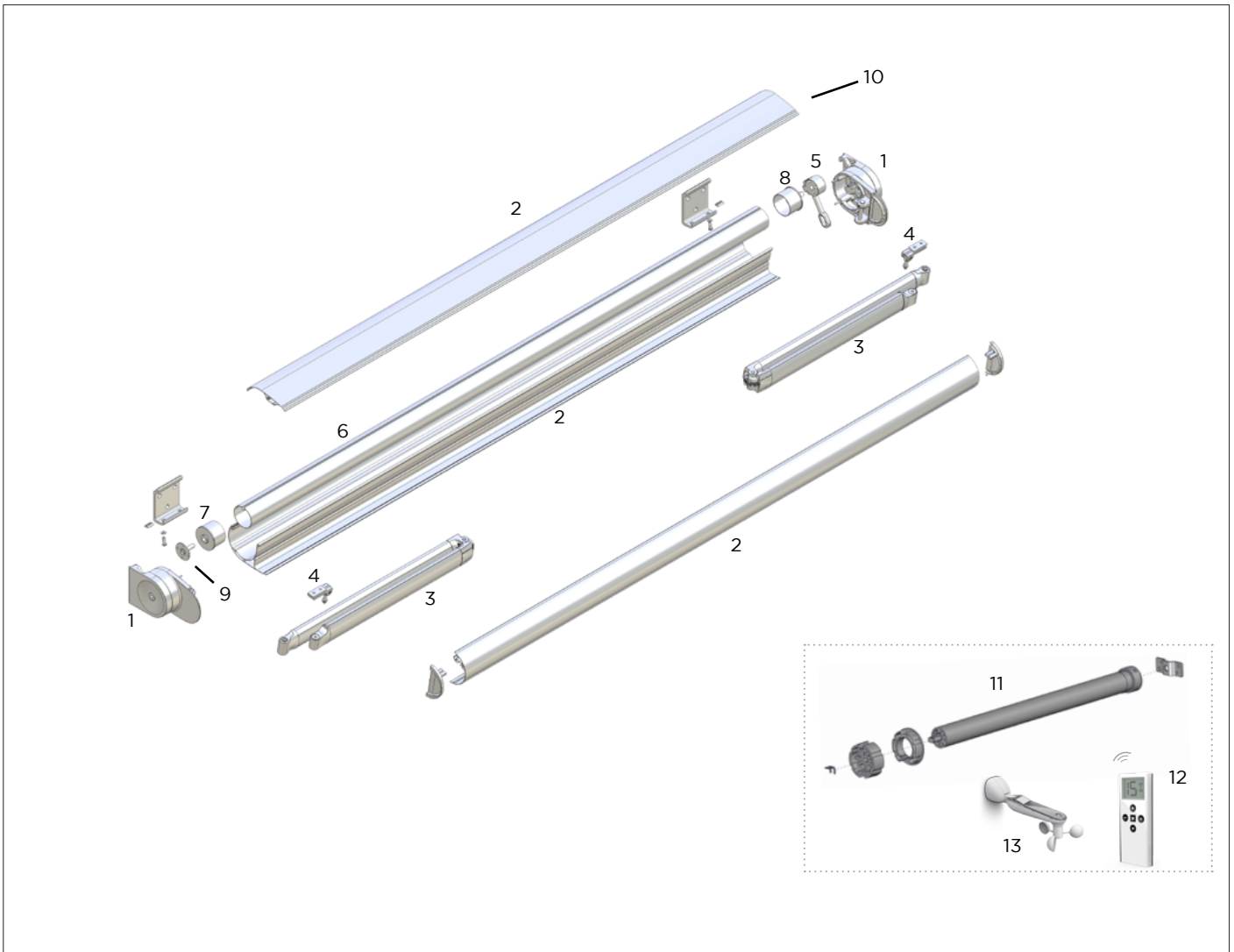
One Channel, Five Channel & Fifteen Channel



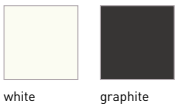
SIZE.	Push ONE Channel	Push 5 Channel
CODE.	MT02-0101-xxx010	MT02-0101-xxx004
PACK.	1 100 Pcs	1 100 Pcs

SIZE.	Push 15 Channel
CODE.	MT02-0101-xxx008
PACK.	1 100 Pcs

COLOUR. white 067, black 050
 USE WITH. Automate Motors



COLOUR RANGE



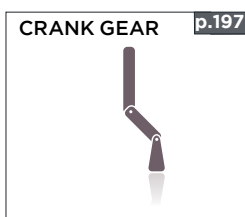
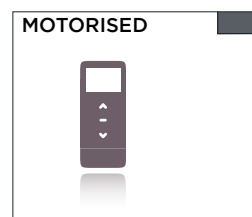
PRODUCT OPTIONS- See Page 274 for Pricing



SPECIFICATION

Max Size: 6m x 3m

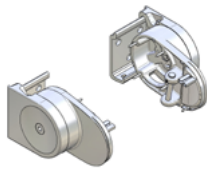
CONTROL OPTIONS



FOLDING ARM SUPPORT BRACKET

1

CODE.	AW02-0101-xxx000
PACK.	1 4 Pair

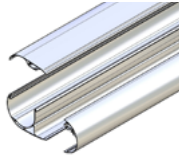


COLOUR. white 074, graphite 315
USE WITH. Cassette Profile

CASSETTE PROFILE KIT

Includes Cover, Bottom & Terminal Bar - 4m & 6m Lengths

2



SIZE.	4.0m	6.0m
CODE.	AW02-0201-xxx400	AW02-0201-xxx600
PACK.	1 Lgth	1 Lgth

COLOUR. white 074, graphite 315
USE WITH. Arm Support, Arm/Terminal Bar Connectors - Low

CONVEYOR

-

CODE.	AW02-0501-001000
PACK.	1 Pc

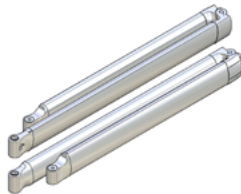


COLOUR. clear 001 only
USE WITH. Cassette Profile - Cover (for systems larger than 4.1m)

FOLDING ARM (HOME) (LESS THAN 5M WIDTHS)
2m, 2.5m & 3m Projection

3a

SIZE.	2.0m
CODE.	AW91-0301-xxx200
PACK.	1 Pair



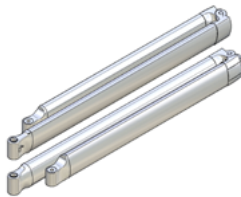
SIZE.	2.5m	3.0m
CODE.	AW91-0301-xxx250	AW91-0301-xxx300
PACK.	1 Pair	1 Pair

COLOUR. white 064, graphite 315
USE WITH. Terminal Bar Connectors - Low, Folding Arm Support Bracket

FOLDING ARM (HOME) | (GREATER THAN 5M WIDTHS)
2m, 2.5m & 3m Projection

3b

SIZE.	2.0m *RUNOUT*
CODE.	AW91-0302-xxx200
PACK.	1 Pair



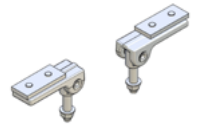
SIZE.	2.5m	3.0m
CODE.	AW91-0302-xxx250	AW91-0302-xxx300
PACK.	1 Pair	1 Pair

COLOUR. white 064, graphite 315
USE WITH. Terminal Bar Connectors - Low, Folding Arm Support Bracket

ARM/TERMINAL BAR CONNECTORS - LOW

4

CODE.	AW91-0402-064000
PACK.	1 Pair



COLOUR. white 074, graphite 315
USE WITH. Folding Arm, Arm Support

GEAR 11:1

5

CODE.	AW92-0901-050000
PACK.	1 25 Pcs



COLOUR. black 050
USE WITH. Gear Drive End Cap, Arm Support, Crank Rod

CRANK ROD

-

TYPE.	1.8m
CODE.	AW91-1001-xxx180
PACK.	1 10 Pcs



COLOUR. white 074, graphite 315
USE WITH. Gear 11:1

GEAR SCREW KIT
M6 x 45

-

CODE.	AW92-0901-010002
PACK.	1 Kit

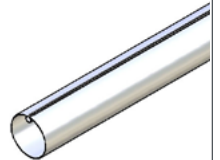


COLOUR. stainless steel 010

78MM AWNING TUBE
4.8m & 7m Lengths

6

SIZE.	4.8m	7.0m
CODE.	AW92-0901-000480	AW92-0901-000700
PACK.	28 Lgth	28 Lgth

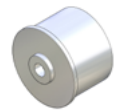


COLOUR. mill finish only
USE WITH. Idler Housing, Gear Drive End Cap

IDLER HOUSING
78mm Tube

7

CODE.	AW91-1401-338000
PACK.	1 Pc



COLOUR. silver grey 338 only
USE WITH. Pin Adaptor, 78mm Tube

GEAR DRIVE END CAP
1/2" Square Shaft, 78mm Tube

8

CODE.	AW91-1101-338000
PACK.	1 Pc

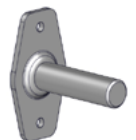


COLOUR. silver grey 338 only
USE WITH. Gear 11:1, 78mm Tube

PIN ADAPTOR

9

CODE.	AW91-1201-006000
PACK.	1 100 Pcs



COLOUR. stainless steel 006
USE WITH. Arm Support, Idler Housing

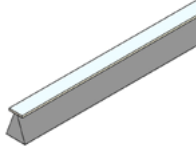
FABRIC BRUSH T SLOT FIT

7mm High x 4.8mm Wide - 1 Roll = 350m

10

CODE.	AW91-1501-050000
PACK.	350 Roll

COLOUR. black 050 only
USE WITH. Cassette Profile (Cover)



AUTOMATE | MOTION SENSOR

13b

CODE.	MT02-0301-xxx002
PACK.	1 25 Pcs

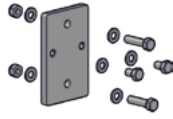
COLOUR. white 072, black 050
USE WITH. Automate Motor



KUMO FASCIA BRACKET ADAPTER PLATE

CODE.	AW02-2601-033000
PACK.	1 Set

COLOUR. Heavy Duty Galvanised 033
USE WITH. Fascia Mounting Bracket LOW, Kumo Wall/Ceiling Bracket



UNIVERSAL ZAMAK ADAPTER WITH LOCK RING | THREADED

Screws Sold Separately.

CODE.	RB56-0766-014050
PACK.	1 50 Pcs

COLOUR. cast silver 014
USE WITH. AX Motors, C/Sunk M6x16 Screws



AUTOMATE AX ARC MOTOR

78mm Drive & Crown Wheel, Clip, Sq. Shaft Adaptor

11

TYPE.	AX30 [15RPM]
CODE.	MT01-1145-069013
PACK.	1 10 Pcs

COLOUR. pure white 069
USE WITH. 78mm Awning Tube, End Brackets.



KUMO - MOTOR / IDLER SCREW KIT

C/Sunk M6 x 20

CODE.	AW92-0901-010004
PACK.	1 Kit

COLOUR. stainless steel 010
USE WITH. Pin Adaptor, Motors using square shaft adaptor.



AUTOMATE REMOTES

One Channel, Five Channel & Fifteen Channel



SIZE.	Push ONE Channel	Push 5 Channel
CODE.	MT02-0101-xxx010	MT02-0101-xxx004
PACK.	1 100 Pcs	1 100 Pcs

SIZE.	Push 15 Channel
CODE.	MT02-0101-xxx008
PACK.	1 100 Pcs

COLOUR. white 067, black 050
USE WITH. Automate Motors

AUTOMATE | PULSE 2 HUB

CODE.	MT02-0401-067001
PACK.	1 10 Pcs

COLOUR. white 067
USE WITH. Automate motors



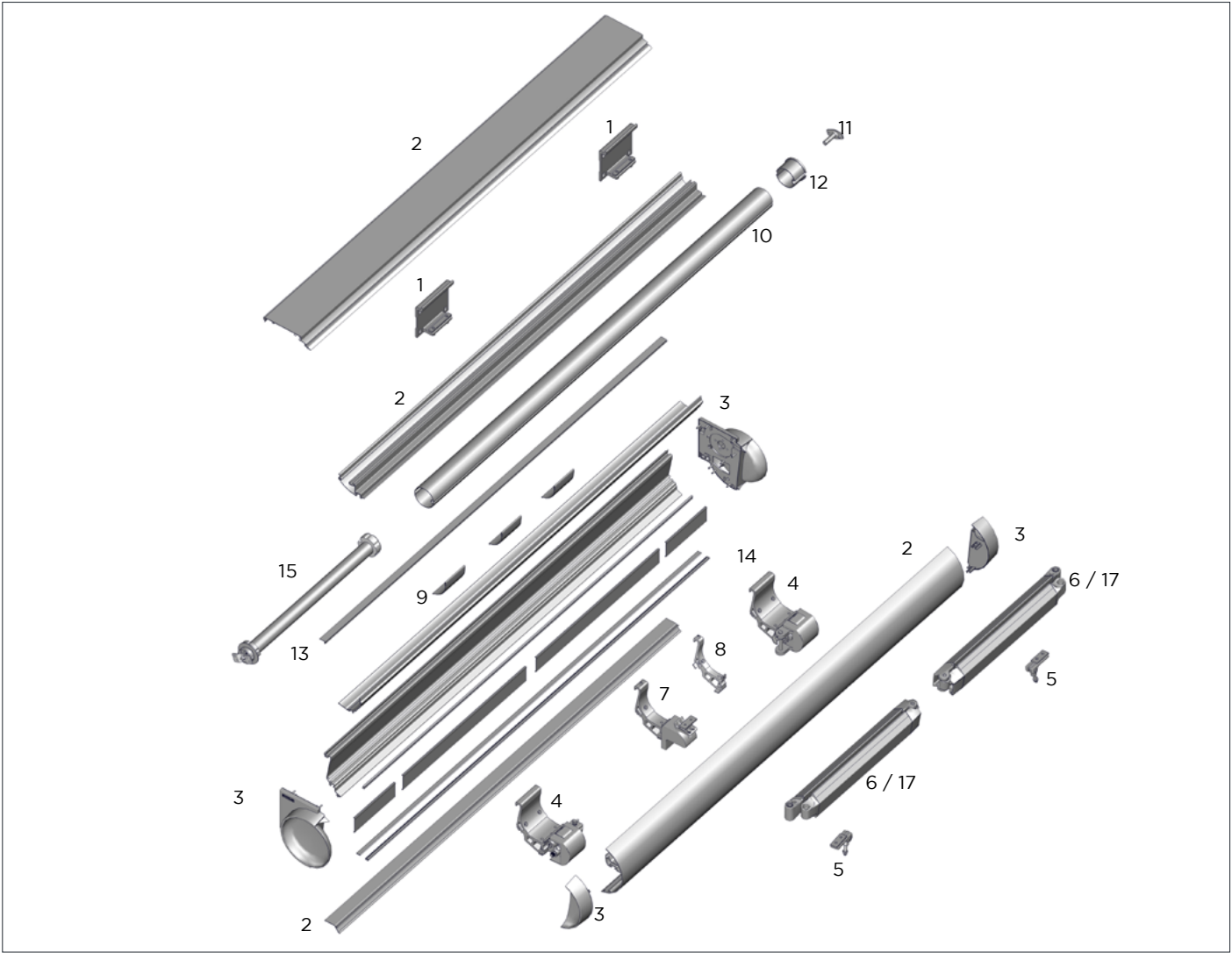
AUTOMATE | SUN & WIND SENSOR

13a

TYPE.	Solar	240V
CODE.	MT02-0301-072001	MT02-0301-072003
PACK.	1 10 Piece	1 10 Piece

COLOUR. white 072
USE WITH. Automate Motors





COLOUR RANGE

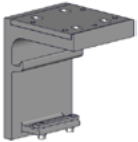


graphite

PRODUCT OPTIONS

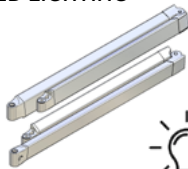
FENG- CEILING BRACKET

16



FENG- ARM WITH LED LIGHTING

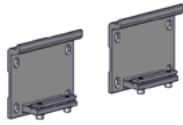
17



FENG - WALL BRACKET

1

CODE.	AW09-0107-315001
PACK.	1 Pair

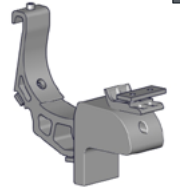


COLOUR. graphite 315
USE WITH. Cassette Profile

FENG - SUPPORT CONVOYER

7

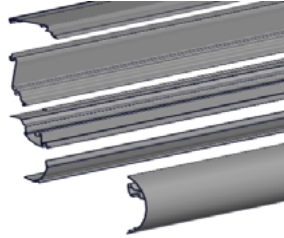
CODE.	AW09-0105-315001
PACK.	1 15 Pcs



COLOUR. graphite 315 only
USE WITH. Cassette Profile, Awnings > 4.8m wide

FENG - CASSETTE PROFILE KIT
4m, 5m & 7m Lengths

2



SIZE.	4.0m	5.0m	7.0m
CODE.	AW09-0101-315400	AW09-0101-315500	AW09-0101-315700
PACK.	1 Kit	1 Kit	1 Kit

COLOUR. graphite 315
USE WITH. Arm Support, Arm/Terminal Bar Connectors - High

FENG - COVER SUPPORT

8

CODE.	AW09-0106-050001
PACK.	1 45 Pcs

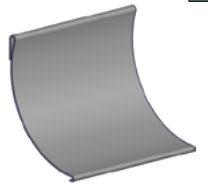


COLOUR. black 050 only
USE WITH. Cassette Profile

FENG - PVC FABRIC SAVING PROFILE
(5 per kit)

9

CODE.	AW09-0109-001001
PACK.	1 30 Kit

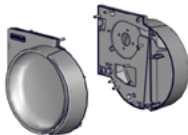


COLOUR. clear 001
USE WITH. Cassette Profile Kit (1 per fabric join)

FENG - CASSETTE END COVERS

3

CODE.	AW09-0102-315001
PACK.	1 3 Pairs

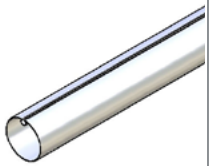


COLOUR. graphite 315

78MM AWNING TUBE
4.8m & 7m Lengths

10

SIZE.	4.8m	7.0m
CODE.	AW92-0901-000480	AW92-0901-000700
PACK.	28 Lgth	28 Lgth

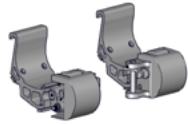


COLOUR. mill finish only
USE WITH. Automate Motor, Idler Housing

FENG - ARM SUPPORT KIT

4

CODE.	AW09-0104-315001
PACK.	1 3 Pairs

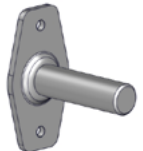


COLOUR. graphite 315
USE WITH. Folding Arms

PLATE WITH PIN

11

CODE.	AW91-1201-006000
PACK.	1 100 Pcs

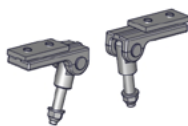


COLOUR. stainless steel 006
USE WITH. Screw kit, Cassette End Covers

ARM/ TERMINAL BAR CONNECTORS- HIGH

5

CODE.	AW91-0501-315000
PACK.	1 50 Pair

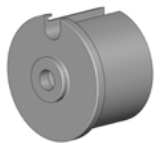


COLOUR. graphite 315
USE WITH. Folding Arm, Cassette Profile

IDLER HOUSING- 78MM TUBE

12

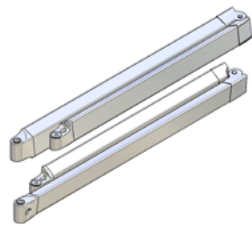
CODE.	AW91-1401-338000
PACK.	1 100 Pcs



COLOUR. silver grey 338
USE WITH. Tube, Plate with Pin

FOLDING ARM
2.5m, 3m & 3.5m Projection

6a



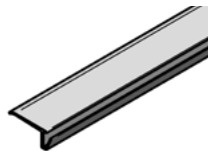
TYPE.	2.5m (URBAN)	3.0m (URBAN)	3.5m (KATANA)
CODE.	AW91-0501-xxx250	AW91-0501-xxx300	AW91-0701-xxx350
PACK.	1 Pair	1 Pair	1 Pair

COLOUR. graphite 315
USE WITH. Arm/Terminal Bar Connectors - High, Cassette Profile (Terminal Bar)

PROTECTION HOOD GASKET
1 Roll = 50 meters

13

CODE.	AW91-0610-xxx003
PACK.	50 Roll

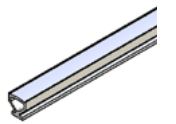


COLOUR. black 050, Metalized Grey 344
USE WITH. Cassette Profile

WALL & COUPLING GASKET

14


CODE.	AW03-1401-050100
PACK.	1 100 Metre



COLOUR. black 050
USE WITH. Cassette Profile

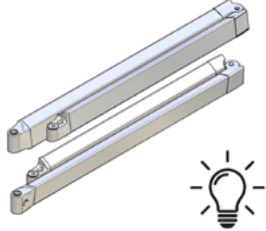
AUTOMATE AX ARC MOTOR
78mm Drive & Crown Wheel, Clip, Sq. Shaft Adaptor

TYPE.	AX30 [15RPM]	AX50 [12RPM]
CODE.	MT01-1145-069013	MT01-1145-069015
PACK.	1 10 Pcs	1 10 Pcs



COLOUR. pure white 069
USE WITH. 78mm Awning Tube, End Brackets.


FENG - FOLDING ARM WITH LED LIGHTS
2.5m, 3m & 3.5m Projection



SIZE.	2.5m	3m	3.5m
CODE.	AW09-0103-315250	AW09-0103-315300	AW09-0103-315350
PACK.	1 Pair	1 Pair	1 Pair

COLOUR. graphite 315
USE WITH. Arm / Terminal Bar Connectors - High, Cassette Profile (Terminal Bar)

AUTOMATE REMOTES
One Channel, Five Channel & Fifteen Channel




SIZE.	Push ONE Channel	Push 5 Channel
CODE.	MT02-0101-xxx010	MT02-0101-xxx004
PACK.	1 100 Pcs	1 100 Pcs

SIZE.	Push 15 Channel
CODE.	MT02-0101-xxx008
PACK.	1 100 Pcs

COLOUR. white 067, black 050
USE WITH. Automate Motors

100W LED POWER SUPPLY W/ RECEIVER & DIMMER


CODE.	MT23-0401-400000
PACK.	1 Piece



USE WITH. Folding Arm with LED lights, Screw Kit

AUTOMATE | SUN & WIND SENSOR


TYPE.	Solar	240V
CODE.	MT02-0301-072001	MT02-0301-072003
PACK.	1 10 Piece	1 10 Piece



COLOUR. pure white 072
USE WITH. Automate Awning Motors

1CH WALL WIRELESS TRANSMITTER


CODE.	MT23-0402-066001
PACK.	1 Piece



COLOUR. Off White 066
USE WITH. 100W LED power supply

AUTOMATE | MOTION SENSOR

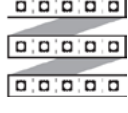
CODE.	MT02-0301-xxx002
PACK.	1 25 Pcs



COLOUR. Vivid White 072, Black 050
USE WITH. Automate Motors

LED STRIP, 8MM, 10W/M WW IP65 - 7METRE


CODE.	MT23-0403-069007
PACK.	1 Piece



USE WITH. Cassette Profile Kit, 100W LED power supply

AUTOMATE PULSE 2.0 | WI-FI HUB


CODE.	MT02-0401-067001
PACK.	1 10 Pcs



COLOUR. White 067
USE WITH. Automate Motors

ADAPTOR CABLE 20CM (MALE - JST FEMALE)

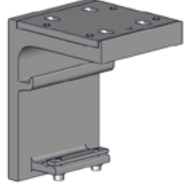
CODE.	MT23-0404-001001
PACK.	1 Piece



USE WITH. LED arms

FENG - CEILING BRACKET


CODE.	AW09-0108-315001
PACK.	1 Pcs



COLOUR. graphite (315)
USE WITH. Cassette Profile (replace Wall Bracket)

JST T CABLE 20+20+20 M+F+F


CODE.	MT23-0404-001007
PACK.	1 Piece



USE WITH. 100W LED power supply, Extension cable, Adaptor Cable.

LED EXTENSION CABLE - 3M & 5M

TYPE.	3m	5m
CODE.	MT23-0404-001005	MT23-0404-001006
PACK.	1 Piece	1 Piece



USE WITH. 100W LED power supply

SCREW KIT
M6 x 12

CODE.	AW92-0901-010007
PACK.	1 Kit

COLOUR. stainless steel 010
USE WITH. Automate Awning Motors, 100W LED Power Supply, Plate with Pin



UNIVERSAL ZAMAK ADAPTER WITH LOCK RING | THREADED
Screws Sold Separately.

CODE.	RB56-0766-014050
PACK.	1 50 Pcs

COLOUR. cast silver 014
USE WITH. AX Motors, M6x10 Screws



		WIDTH (mm)				
PROJECTION (mm)	UP TO →	3600	4800	5400	6000	7000
	2040					
	2540					
	3040					
HOOD UPGRADE						
# ARMS		2	2	2	2	3
# MOUNTING BRACKETS		2	3	4	4	5
# ROLLER CENTRE SUPPORTS		0	0	0	1	1

* = Check Minimum Width

MINIMUM WIDTH	NO. OF ARMS	
ARM PROJECTION	2	3
2040	2230	3460
2540	2730	4210
3040	3230	4960

Add 200mm to minimum width for Motion Sensor inside terminal bar

ADD-ONS			
SOLD SEPARATELY		ADDED TO KIT PRICE	
ITEM	COST	ITEM	COST
AX30 MOTOR		Gear (2 Arms)	
AX50 MOTOR		78 AL HD Tube	
1 CH REMOTE			
5 CH REMOTE			
15 CH REMOTE			
WIND&SUN SENSOR			
MOTION SENSOR			

FREIGHT		
State	Base Price	Per add. awning *
QLD		
NSW		
VIC		
TAS		
Metro Surcharge		
Regional Surcharge		

* Priced on application for bulk order quantities.

* Contact customer service to confirm your metro/regional status.

		WIDTH (mm)	
PROJECTION (mm)	UP TO →	4000	6000
	2200		
	2700		
	3200		
# ARMS		2	

* = Check Minimum Width
 ^ = Runout

ARM PROJECTION	MINIMUM WIDTH
2200	2390
2700	2890
3200	3390

Add 200mm to minimum width for Motion Sensor inside terminal bar

ADD-ONS			
SOLD SEPARATELY		ADDED TO KIT PRICE	
ITEM	COST	ITEM	COST
AX30 MOTOR		Gear (2 Arms)	
AX50 MOTOR		78 AL HD Tube	
1 CH REMOTE			
5 CH REMOTE			
15 CH REMOTE			
WIND&SUN SENSOR			
MOTION SENSOR			

FREIGHT		
State	Base Price	Per add. awning *
QLD		
NSW		
VIC		
TAS		
Metro Surcharge		
Regional Surcharge		

* Priced on application for bulk order quantities.
 * Contact customer service to confirm your metro/regional status.

		WIDTH (mm)					
		UP TO	4000	4500	5000	6000	7000
PROJECTION (mm)	2650						
	3150						
	3650						
	+ LED CASSETTE STRIP**						
# ARMS		2				3	
# MOUNTING BRACKETS *SOLD SEPERATELY*		2	3	3	3	4	
# ROLLER CENTRE SUPPORTS		0	0	1	1	1	

* = Check Minimum Width
 ** = Automate Group Discount applicable to pricing
 LED componentry includes: remote, power supply and cabling

MINIMUM WIDTH	NO. OF ARMS	
ARM PROJECTION	2	3
2650	3110	4560
3150	3650	5370
3650	4110	6060

Add 200mm to minimum width for Motion Sensor inside terminal bar

ADD-ONS				FREIGHT		
SOLD SEPARATELY		ADDED TO KIT PRICE		State	Base Price	Per add. awning *
ITEM	COST	ITEM	COST	QLD		
AX30 MOTOR		78 AL HD Tube		NSW		
AX50 MOTOR				VIC		
1 CH REMOTE				TAS		
5 CH REMOTE				Metro Surcharge		
15 CH REMOTE				Regional Surcharge		
WIND&SUN SENSOR						
MOTION SENSOR						
ZAMAK ADAPTOR						

* Priced on application for bulk order quantities.
 * Contact customer service to confirm your metro/regional status.

		WIDTH (mm)				
UP TO →		4000	4500	5000	6000	7000
PROJECTION (mm)	2650					
	3150					
	3650					
	+ LED COMPONENTRY**					
	+ LED CASSETTE STRIP**					
# ARMS		2				3
# MOUNTING BRACKETS *SOLD SEPERATELY*		2	3	3	3	4
# ROLLER CENTRE SUPPORTS		0	0	1	1	1

* = Check Minimum Width
 ** = Automate Group Discount applicable to pricing
 LED componentry includes: remote, power supply and cabling

MINIMUM WIDTH	NO. OF ARMS	
ARM PROJECTION	2	3
2650	3110	4560
3150	3650	5370
3650	4110	6060

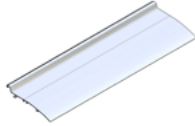
Add 200mm to minimum width for Motion Sensor inside terminal bar

ADD-ONS				FREIGHT		
SOLD SEPARATELY		ADDED TO KIT PRICE		State	Base Price	Per add. awning *
ITEM	COST	ITEM	COST			
AX30 MOTOR		78 AL HD Tube		QLD		
AX50 MOTOR				NSW		
1 CH REMOTE				VIC		
5 CH REMOTE				TAS		
15 CH REMOTE						
WIND&SUN SENSOR				Metro Surcharge		
MOTION SENSOR				Regional Surcharge		
ZAMAK ADAPTOR						

* Priced on application for bulk order quantities.
 * Contact customer service to confirm your metro/regional status.

PIUMA/KUMO - PROTECTION HOOD
7.1m lengths

CODE.	AW91-0610-xxx710
PACK.	1 Pc



COLOUR. white 074, graphite 315
USE WITH. Protection Hood End Covers, Bracket kit, Gasket

WELDING TAPE

Note: No Discount applies for this item

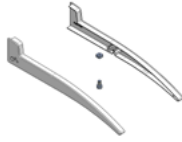
CODE.	HD31-0501-001010
PACK.	50 500 Metre



COLOUR. clear 001 only

PIUMA/KUMO - PROTECTION HOOD END COVERS

CODE.	AW91-0610-xxx002
PACK.	1. Pair



COLOUR. white 074, graphite 315
USE WITH. Protection Hood

SOLID ROUND PVC SPLINE | 250M ROLL

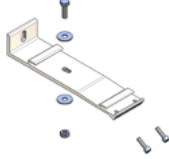
TYPE.	6mm	7mm
CODE.	SB91-0016-050250	SB91-0017-050250
PACK.	250 Metre Roll	250 Metre Roll



COLOUR. black 050
USE WITH. Roller Tube, Terminal Bar

PIUMA/KUMO - PROTECTION HOOD BRACKET KIT

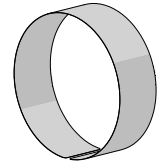
CODE.	AW91-0610-xxx001
PACK.	1. Kit



COLOUR. white 074, graphite 315
USE WITH. Protection Hood, 1 bracket every 2m.

78MM TUBE STICKERS (100 PCS PER ROLL)
NET PRICING- Not Subject to Discounts

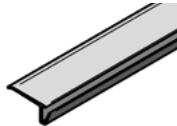
CODE.	AW91-3001-xxx000
PACK.	1 10 Roll



COLOUR. 064 White, 315 Graphite
USE WITH. 78mm Tubes.

PIUMA/KUMO - PROTECTION HOOD GASKET
1 Roll = 50 meters

CODE.	AW91-0610-344003
PACK.	1 50 METRES



COLOUR. metalized grey 344
USE WITH. Protection Hood

AUTOMATE | EXTERNAL AC IN-LINE TAIL- 2.5M

CODE.	RB24-9105-069025
PACK.	1 48 Pcs



COLOUR. 069 White
USE WITH. AX Motors

FASCIA MOUNTING BRACKET - LOW
10, 22 & 33 Degree angles



SIZE.	10 degree	22 degree	33 degree
CODE.	AW92-2101-033010	AW92-2101-033022	AW92-2101-033033
PACK.	1. Pc	1. Pc	1. Pc

COLOUR. Heavy Duty Galvanised 033
USE WITH. PIUMA, KUMO Systems

GEAR/CRANK OPERATION CONTROL ARM

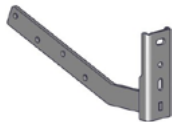


SIZE.	100cm	150cm	200cm
CODE.	RB05-9101-050100	RB05-9101-050150	RB05-9101-050200
PACK.	5 100 Pcs	5 100 Pcs	5 100 Pcs

SIZE.	100cm	150cm	200cm
CODE.	RB05-9101-340100	RB05-9101-340150	RB05-9101-340200
PACK.	5 100 Pcs	5 100 Pcs	5 100 Pcs

COLOUR. grey 340, black 050
USE WITH. Crank Controls, Crank Control Hook

FASCIA MOUNTING BRACKET - HIGH
10, 22 & 33 Degree angles



SIZE.	10 degree	22 degree	33 degree
CODE.	AW92-2102-033010	AW92-2102-033022	AW92-2102-033033
PACK.	1. Pc	1. Pc	1. Pc

COLOUR. Heavy Duty Galvanised 033
USE WITH. PIUMA Systems

HOOK FOR CRANK CONTROL ARM



CODE.	RB05-9104-025000
PACK.	5 100 Pcs

COLOUR. silver zinc plated 025
USE WITH. RB05 Crank Arms, Crank Controls

AWNINGS | MARKETING SAMPLES

Description	Part Number	Price
Feng Sample with Fabric - GRAPHITE (640mm)	MK01-AW09-315600	
Piuma Sample - GRAPHITE (600mm)	MK01-AW04-315600	
Kumo Sample with Fabric - GRAPHITE (600mm)	MK01-AW02-315600	
Folding Arm & drop awning colour swatch	MK04-AW91-000002	
Awning Protection Hood - GRAPHITE (200mm)	MK01-AW91-315200	

AWNINGS | SPARE PARTS

KUMO - TERMINAL BAR END CAPS

TYPE.	Right Hand	Left Hand
CODE.	AW94-0200-xxx001	AW94-0200-xxx002
PACK.	1 Piece	1 Piece

COLOUR. black 050, white 064, graphite 315
 USE WITH. Kumo Terminal Bar



KUMO - WALL BRACKETS ONLY (PAIR)

CODE.	AW02-0101-xxx001
PACK.	1 Pair

COLOUR. white 074, graphite 315
 USE WITH. Kumo Arm Supports

